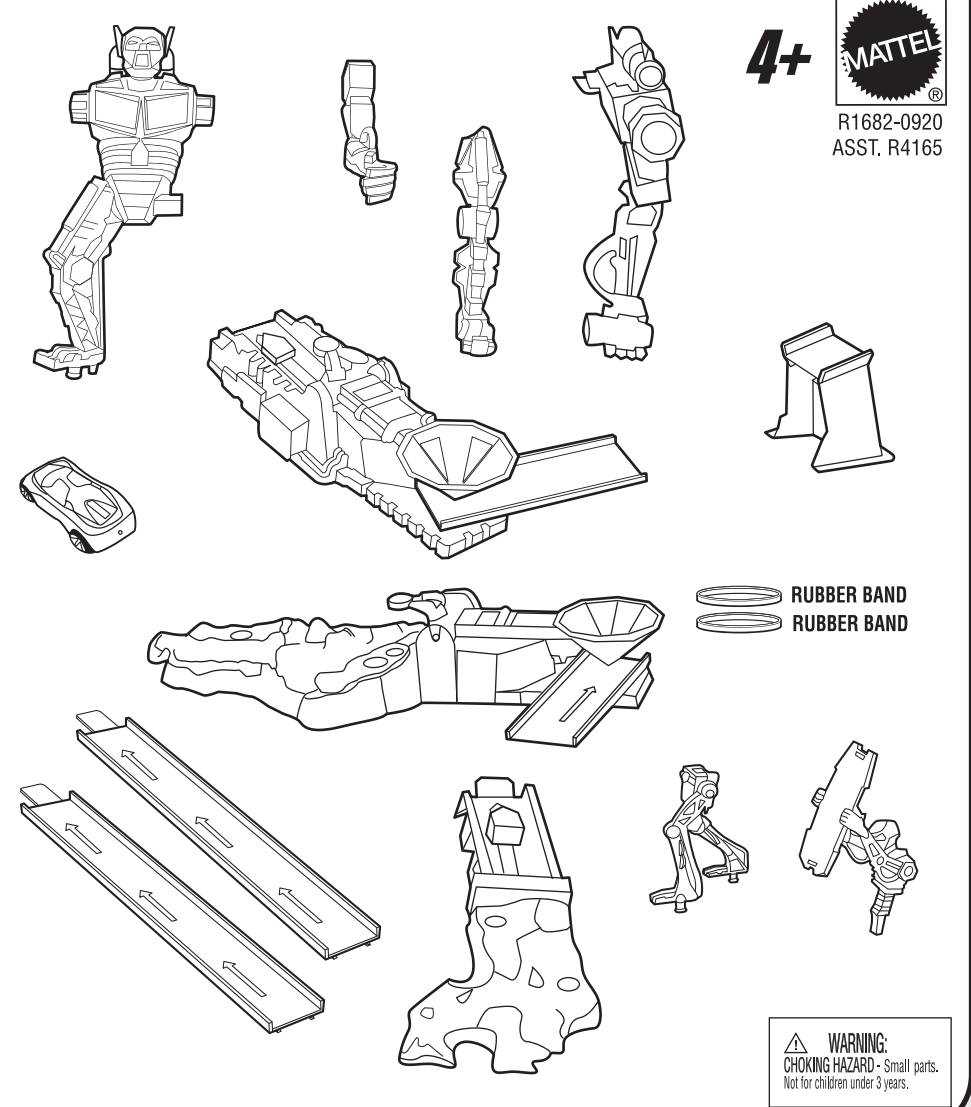


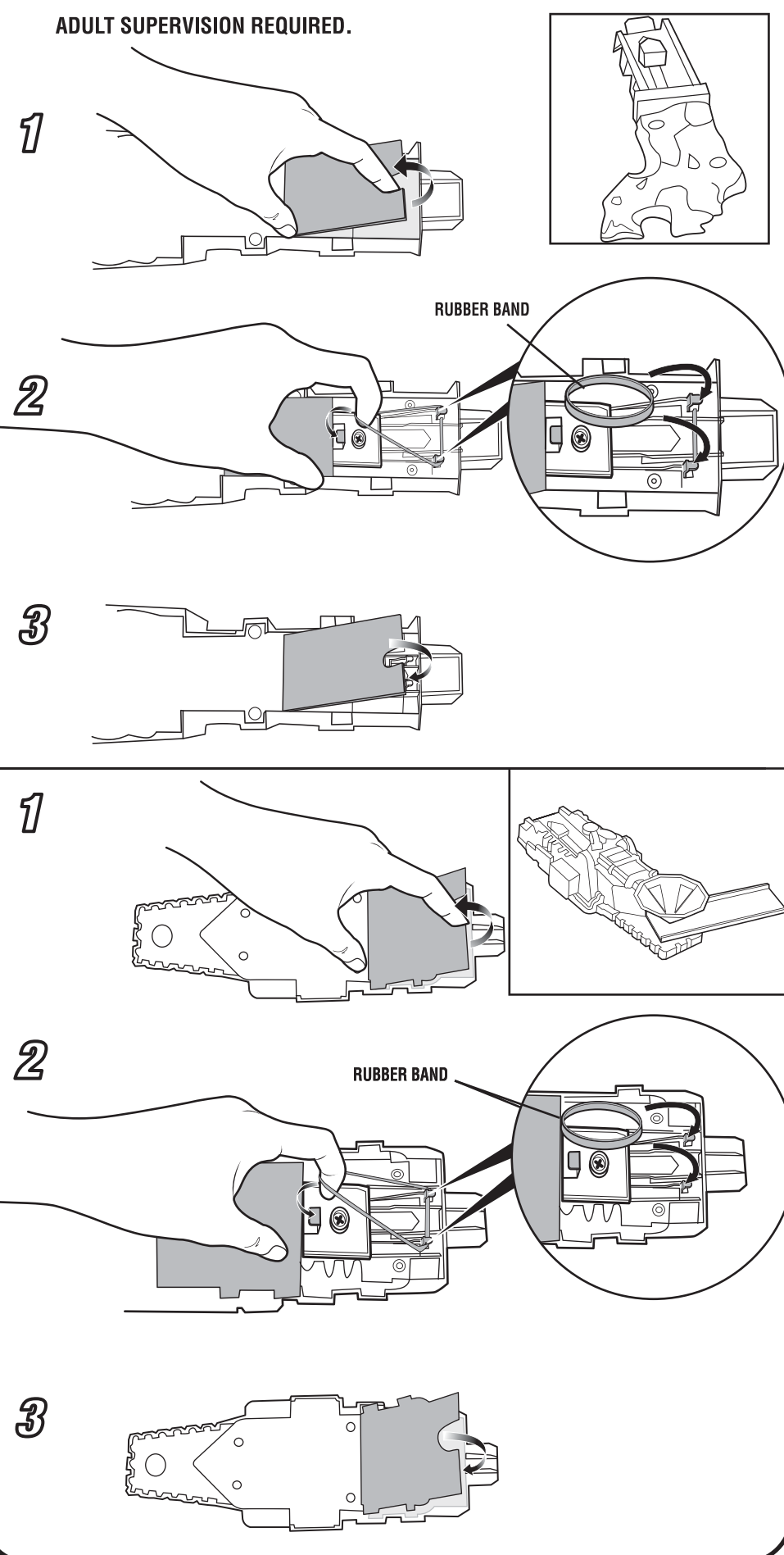
**INSTRUCTIONS**

**CONTENTS**

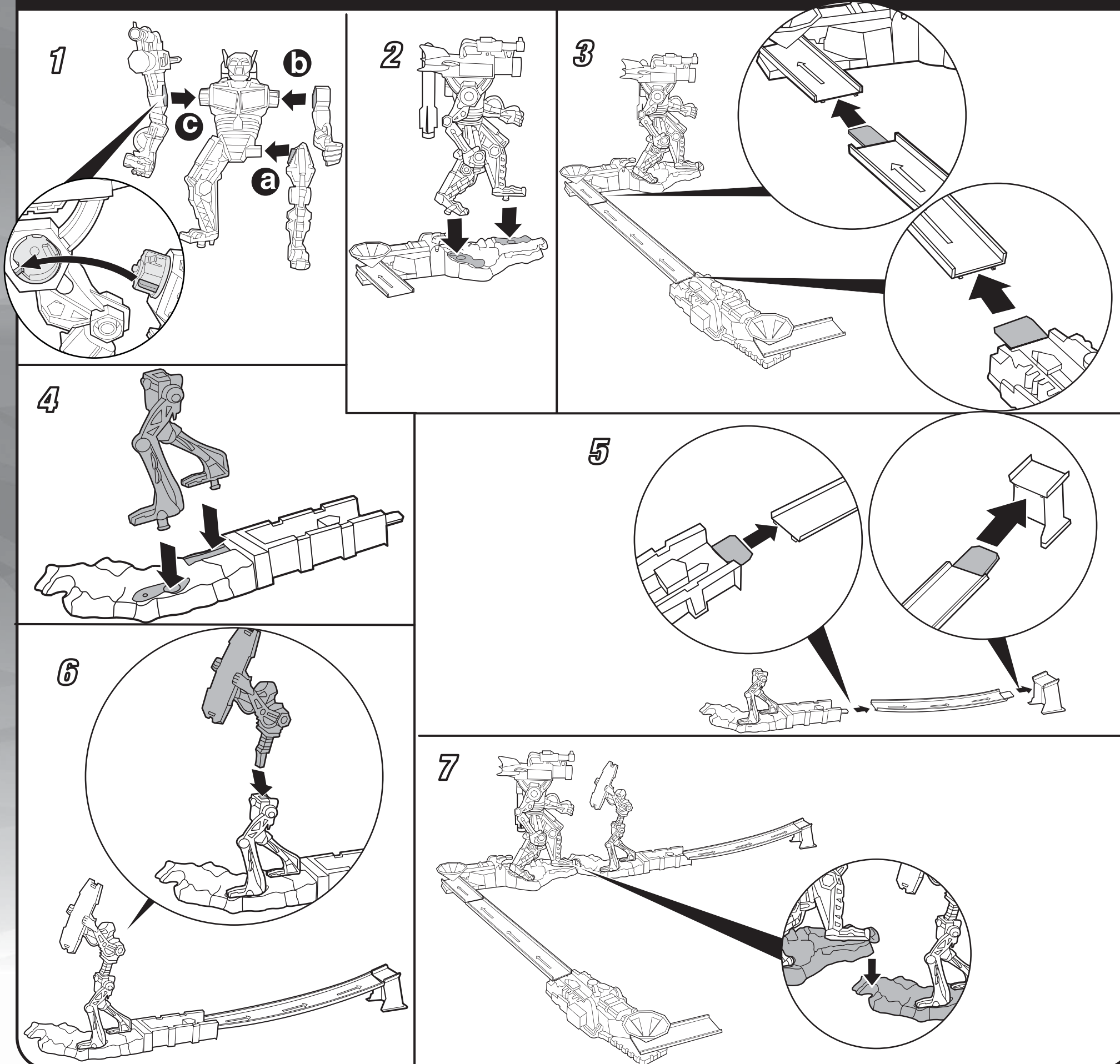


**Replace Rubber Band**

ADULT SUPERVISION REQUIRED.



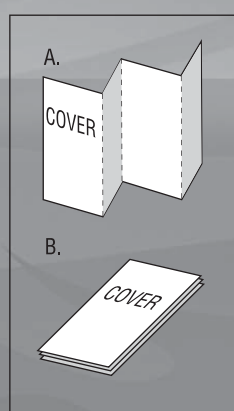
**TO ASSEMBLE**



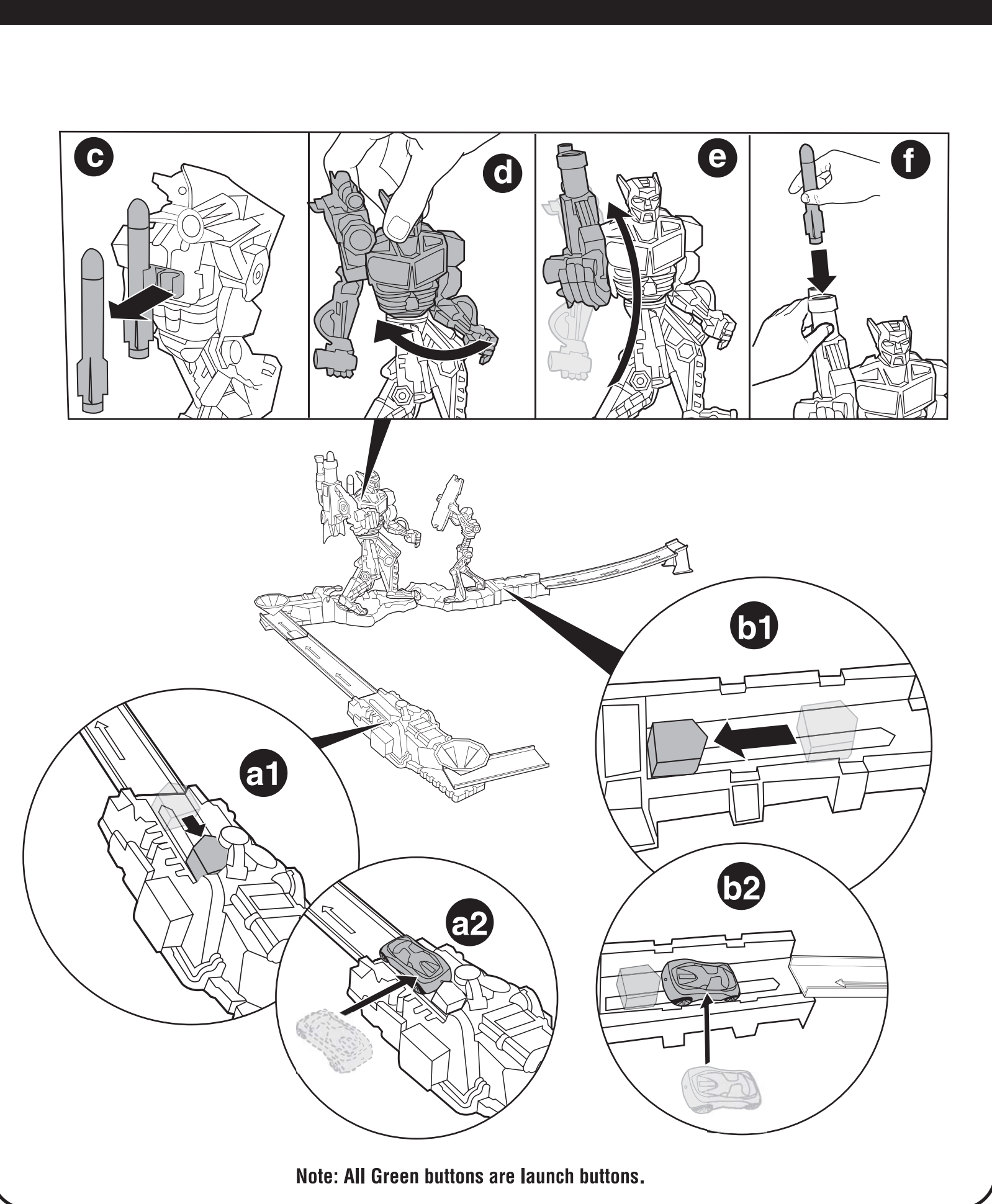
© 2009 Mattel, Inc. All Rights Reserved.  
 Consumer Relations - Mattel, Inc., 636 Girard Avenue, East Aurora, NY 14052 U.S.A. - 1-800-524-8697.  
 service.mattel.com • Mattel Canada Inc., Mississauga, Ontario L5R 3W2. You may call us free at 1-800-524-8697. •  
 Mattel U.K. Ltd., Vanwall Business Park, Maidenhead SL6 4UB. Helpline 01628500303 • Mattel Australia Pty. Ltd.,  
 Richmond, Victoria, 3121 Consumer Advisory Service - 1300 135 312. • Mattel East Asia Ltd., Room 1106, South  
 Tower, World Finance Centre, Harbour City, Tsingshatsui, HK, China. • Diimport & Diedarkan Oleh: Mattel SEA Ptd  
 Ltd. 0905332-P1 Lot 13.5, 13th Floor, Menara Lien Hoe, Persiaran Tropicana Golf Country Resort, 47410 PJ.  
 Tel:03-78803817, Fax:03-78803867.

**INSTRUCTION SHEET SPECIFICATIONS**

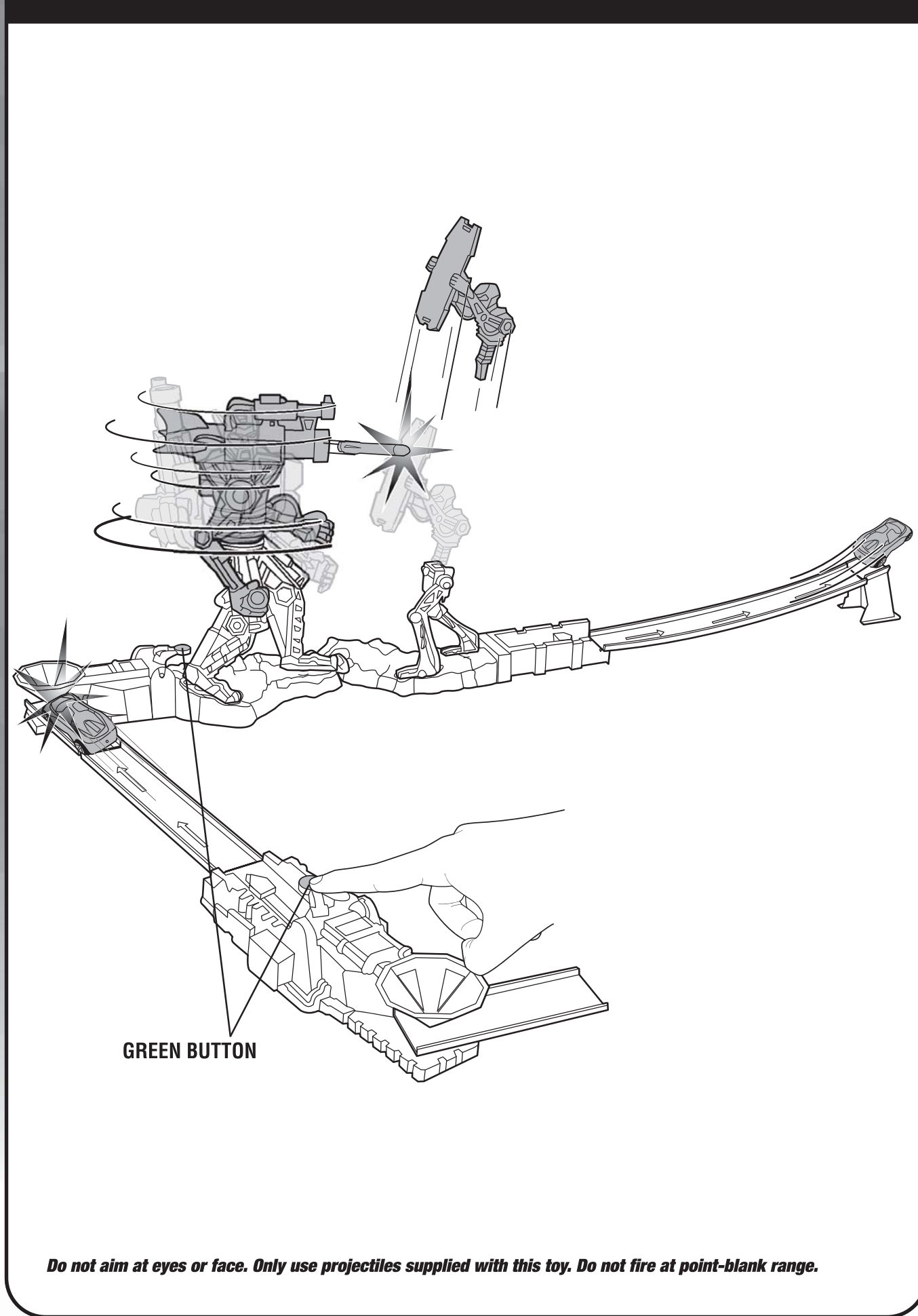
Toy No.	JHW
Part No.	R1685
Item No.	0920
Item Size	22" W x 11" H
Folded Size	5.5" W x 11" H
Type of File	accordion
Colors	1C, 1G
Paper Stock	White Offset
ESM No.	100 B.



**GET READY TO PLAY**



**TO PLAY**



**MORE WAYS TO PLAY**

