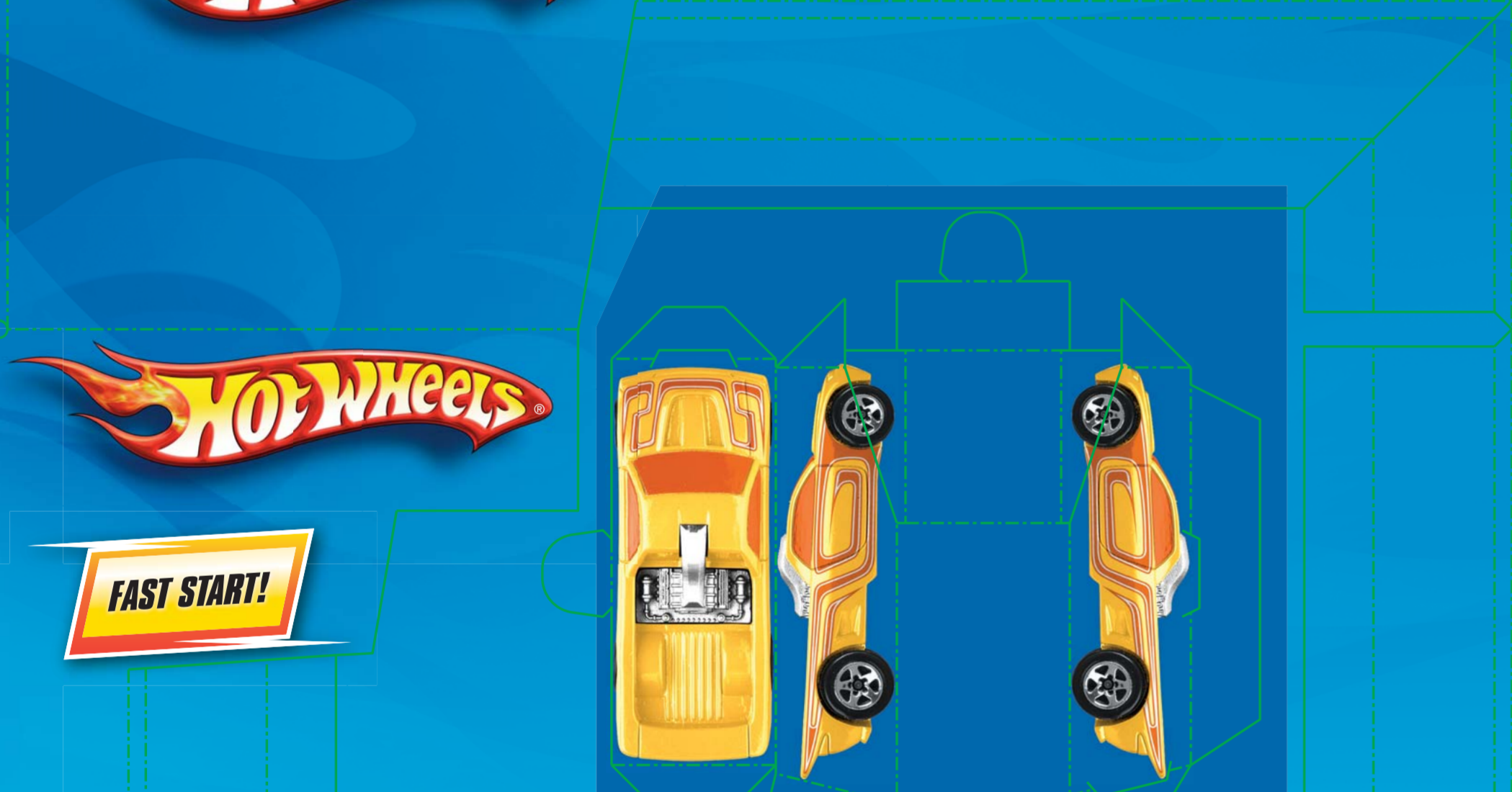




HotWheels SUPER LOOP LAUNCHER



SUPER LOOP LAUNCHER

SUPER LOOP LAUNCHER

SUPER LOOP LAUNCHER  
SLAM DOWN FOR A SUPER FAST LAUNCH!



4+

MADE IN CHINA.  
Mattel Canada Inc., Mississauga, Ontario L5R 3W2.

CE CONFORMS TO THE SAFETY REQUIREMENTS OF ASTM F963.

© 2009 Mattel, Inc. All Rights Reserved. MATTEL, HOT WHEELS and associated trademarks and trade dress are owned by Mattel, Inc. © and ™ designate U.S. trademarks of Mattel, Inc., except as noted. MADE IN CHINA. VEHICLE MADE IN CHINA, MALAYSIA OR THAILAND AS MARKED. Manufactured for Mattel Consumer Relations - Mattel, Inc. 636 Grant Avenue, East Aurora, NY 14052 U.S.A. 1-800-524-8697. Retain this address for future reference: Mattel U.K. Ltd., Vanwall Business Park, Maidenhead SL6 4UB, Helipline - 01628 500303, Mattel Australia Pty Ltd., Richmond, Victoria, 3121, Consumer Advisory Service - 1300 135 312, Mattel East Asia Ltd., Room 1105, South Tower, World Finance Centre, Harbour City, Tsimshatsui, HK, China, Orlimport & Distribution (Oth), Mattel SEA Ptd Ltd. (993332-P) Lot 13.5, Menara Lien Hoe, Perstaran Tropicana Gold Country Resort, 47410 PJ, Tel: 03-76903817, Fax: 03-76803867.



CONSUMER INFORMATION  
Need Assistance? Visit [www.mattel.com](http://www.mattel.com) or call 1-800-524-8697  
P.O. Box 1000, Elkhart, IN 46531-1000 © 2009 Mattel, Inc.

CONTENTS: 1 launcher, 1 vehicle



R4164-0910/0980



The Hot Wheels® Blue color on this proof is simulated. Production must match Mattel® Color Tolerance Set.

ITEM NO.: R4164	LANG: Dem	GRAPHIC DESIGNER: Stephanie	PROOF APPROVAL: SIGN OFF (GRAPHIC)
PART CODE: R4164-0910/0980	PI ENGINEER: Hot Wheels®	PROJECT ENGINEER: MJSK	DATE: 08/06/09
TOY YEAR: 2009 Fall	CS VENDOR: MJSK	SOFTWARE: Illustrator CS3	
PKG. SIZE: 12" x 8.50" x 9.75"	VER: 1st Run	COLOR PROFILE/LPI: Mag CMYB/175dpi	
PKG. SPEC: Windows box	CS DATE: 08/06/09		
BLANK SIZE: 38.5" x 28.6"			

NOTES TO PRINTER: Proofs accurate for process color only. All spot colors must follow PMS Color Formula Guide or color swatch specified.