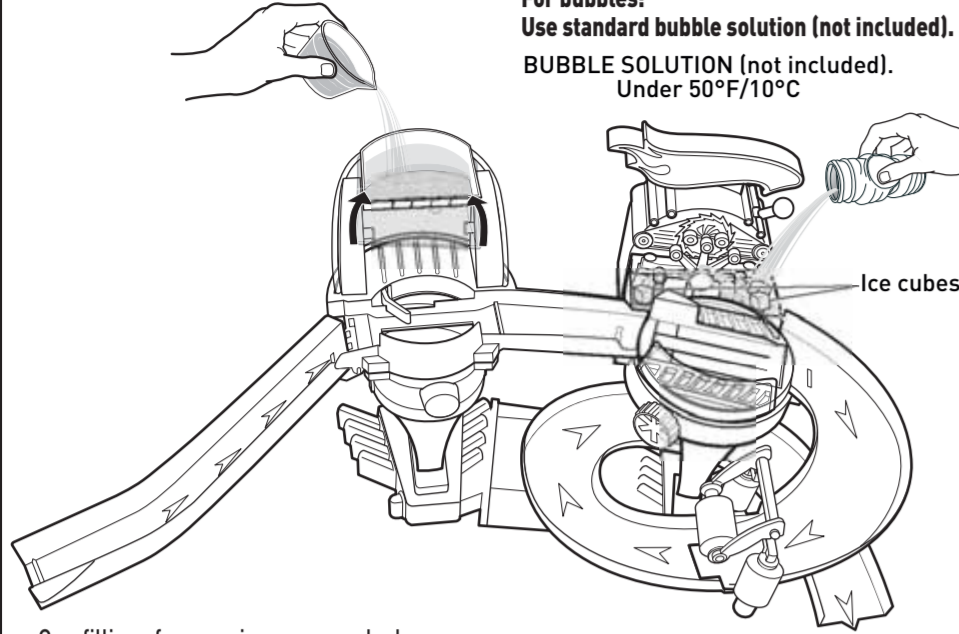


GET READY TO PLAY

WARM WATER
86°F/30°C-104°F/40°C

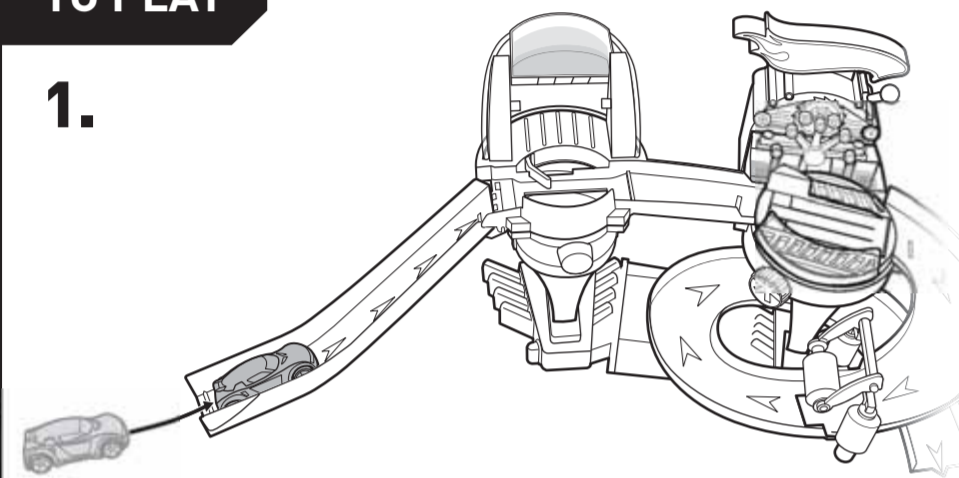
For bubbles:
Use standard bubble solution (not included).
BUBBLE SOLUTION (not included).
Under 50°F/10°C



Overfilling of reservoir may cause leakage.
To avoid burns do not use water that is too hot, above 120°F(48°C).
For best performance of color change feature, add 2 ice cubes to each side of the tray and pour bubble solution over (ideal temp is under 50°F/10°C). Ensure bubble solution tray remains full. Water toys sometimes get messy. Protect play surfaces before use.

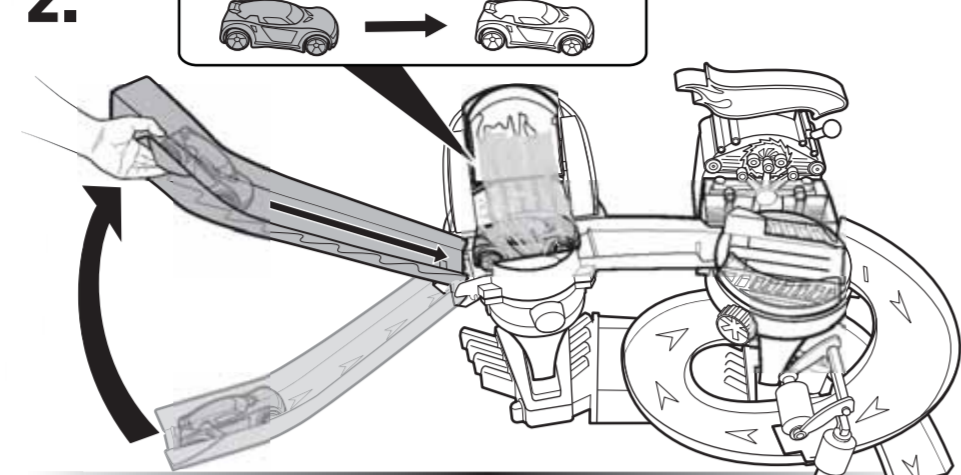
TO PLAY

1.

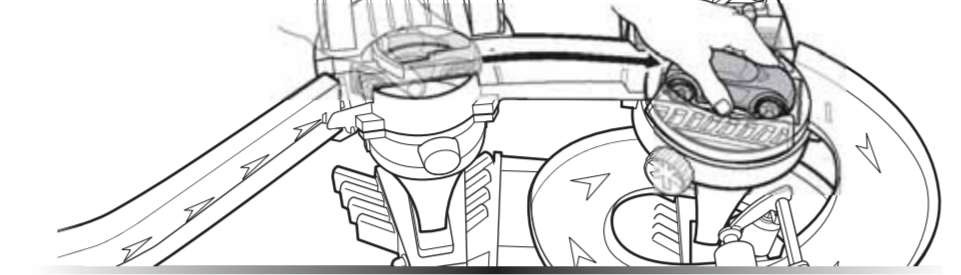


2.

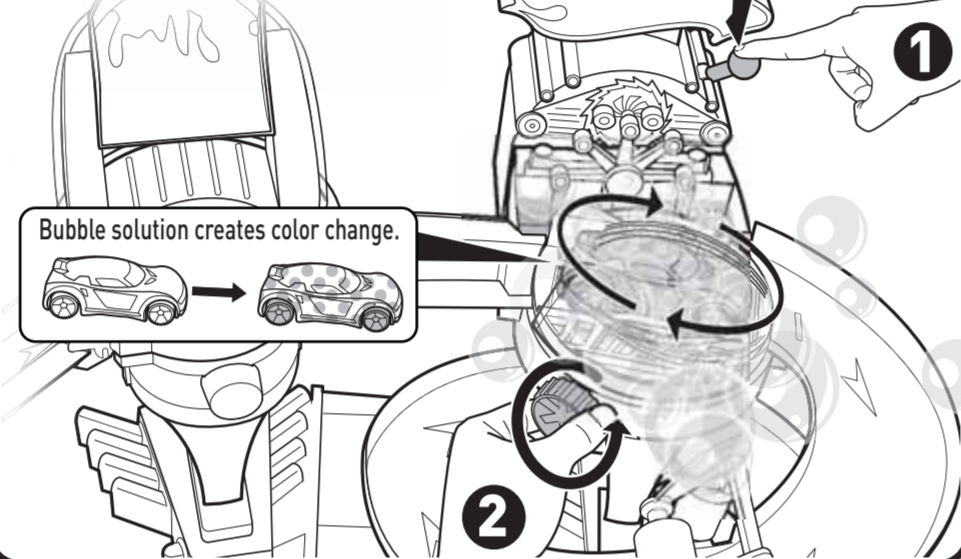
Warm water changes car to original color.



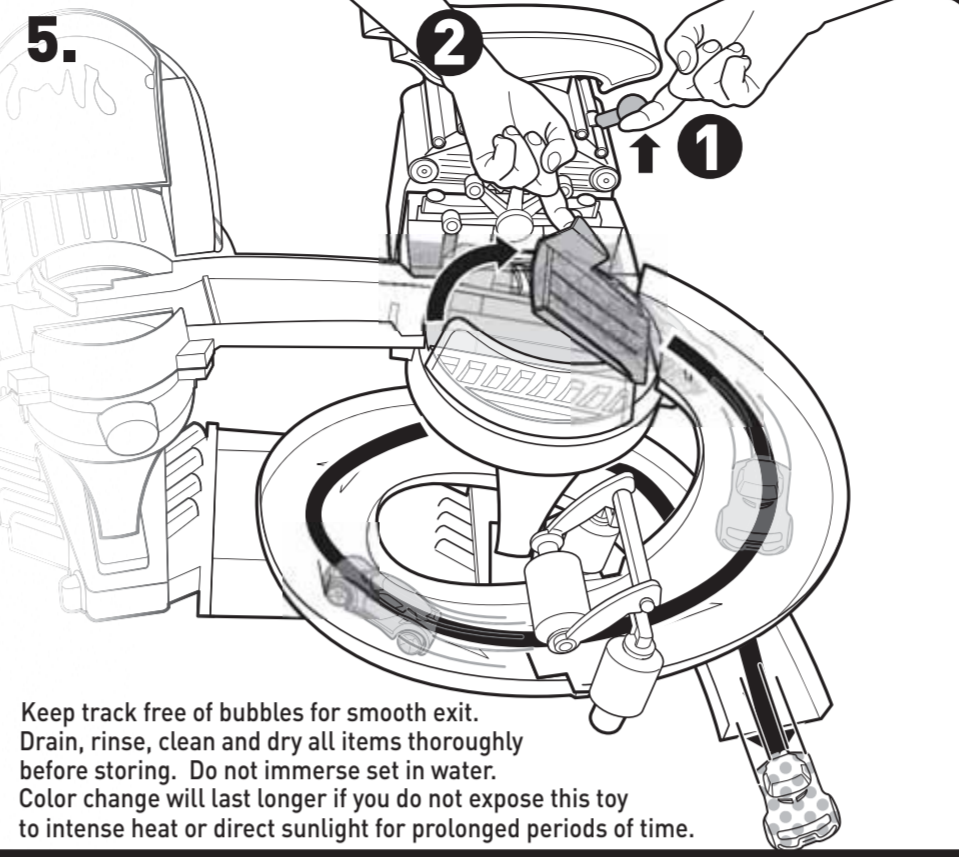
3.



4. Cover car with icy bubbles!

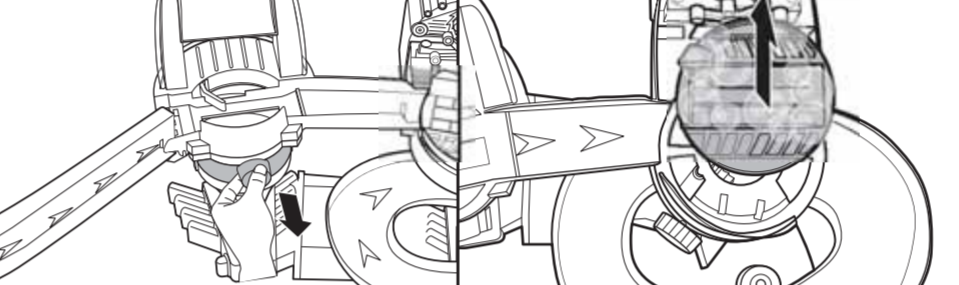


5.



Keep track free of bubbles for smooth exit.
Drain, rinse, clean and dry all items thoroughly before storing. Do not immerse set in water.
Color change will last longer if you do not expose this toy to intense heat or direct sunlight for prolonged periods of time.

For best performance, periodically empty splash tray, and remove and rinse rotating platform.
When no bubbles are made, empty bubble solution tray, and refill with fresh bubble solution and ice cubes.



FEATURING:
TWO-COLOR CHANGE!

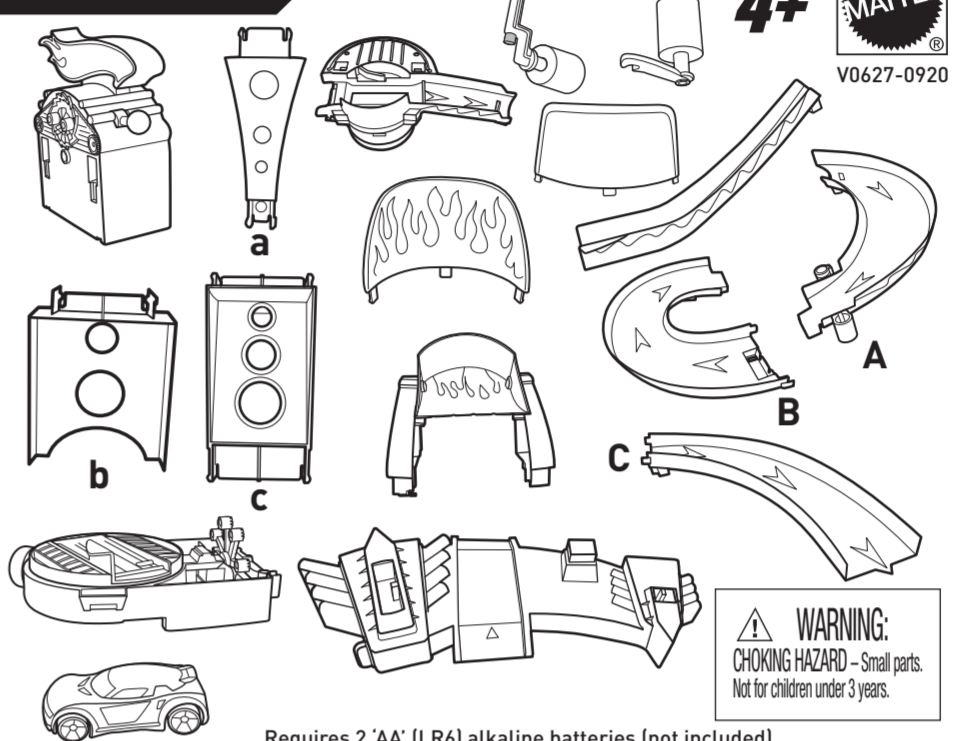


BUBBLE-MATIC™ CAR WASH

INSTRUCTIONS

Please keep these instructions for future reference as they contain important information.

CONTENTS



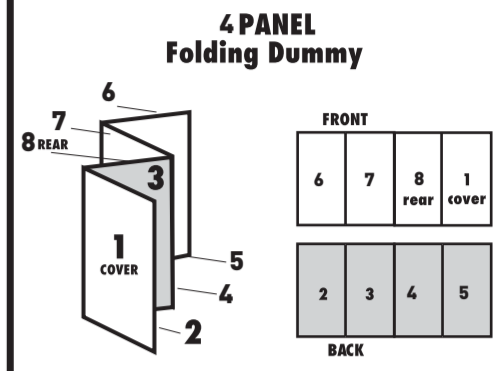
4+
MATTTEL
V0627-0920

WARNING:
CHOKING HAZARD - Small parts.
Not for children under 3 years.

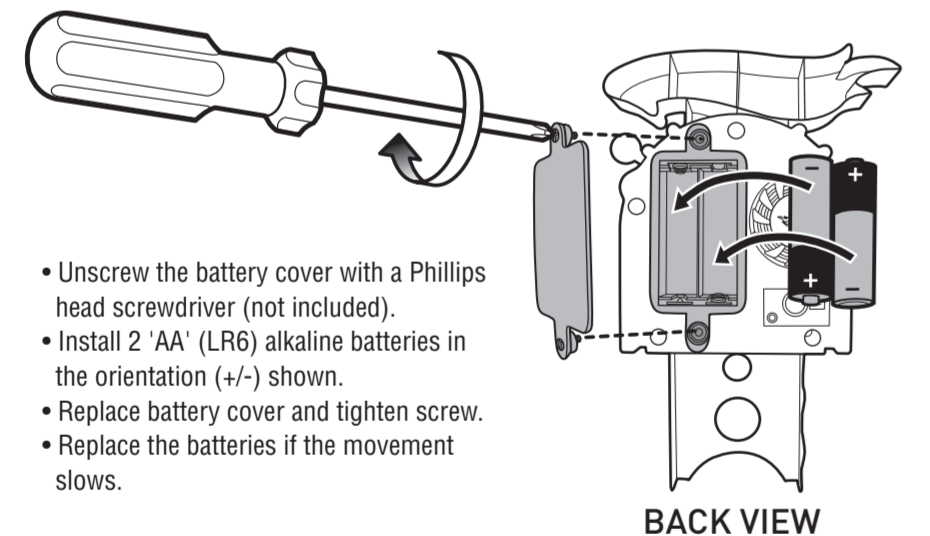
Requires 2 AA (LR6) alkaline batteries (not included).
© 2010 Mattel, Inc. All Rights Reserved. Mattel, Inc., 636 Girard Avenue, East Aurora, NY 14052, U.S.A. Consumer Relations 1-800-524-8697. • Mattel Canada Inc., Mississauga, Ontario L5R 3W2. You may call us free at 1-800-524-8697. • Mattel U.K. Ltd., Watlington Business Park, Watlington, Oxfordshire OX12 9LD, UK. Helpline 01628 500303. • Mattel Australia Pty., Ltd., Richmond, Victoria, 3121 Consumer Advisory Service - 1300 133 312 Mattel East Asia Ltd., Room 1108, South Tower, World Finance Centre, Harbour City, Tsimshatsui, HK, China. • Dimpport & Diederik Oet: Mattel SEA Ptd Ltd. (993532-P) Lot 13.5, 13th Floor, Menara Lien Hoe, Persiaran Tropicana Golf Country Resort, 47410 PJ. Tel:03-78803817, Fax:03-78803867. service.mattel.com

INSTRUCTION SHEET SPECIFICATIONS

Toy No.:	V0627
Part No.:	0920
Trim Size:	22"W x 8.5" H
Folded Size:	5.5" W x 8.5" H
Type of Fold:	Single
# colors:	One
Colors:	Black
Paper Stock:	White Offset
Paper Weight:	70 lb.
EDM No.:	



BATTERY INSTALLATION / REPLACEMENT



- Unscrew the battery cover with a Phillips head screwdriver (not included).
- Install 2 AA (LR6) alkaline batteries in the orientation (+/-) shown.
- Replace battery cover and tighten screw.
- Replace the batteries if the movement slows.

BACK VIEW

BATTERY SAFETY INFORMATION

In exceptional circumstances batteries may leak fluids that can cause a chemical burn injury or ruin your product. To avoid battery leakage:

- Non-rechargeable batteries are not to be recharged.
 - Rechargeable batteries are to be removed from the product before being charged (if designed to be removable).
 - Rechargeable batteries are only to be charged under adult supervision (if designed to be removable).
 - Do not mix alkaline, standard (carbon-zinc), or rechargeable (nickel-cadmium) batteries.
 - Do not mix old and new batteries.
 - Only batteries of the same or equivalent type as recommended are to be used.
 - Batteries are to be inserted with the correct polarity.
 - Exhausted batteries are to be removed from the product.
 - The supply terminals are not to be short-circuited.
 - Dispose of battery(ies) safely.
 - Do not dispose of this product in a fire.
- The batteries inside may explode or leak.

Protect the environment by not disposing of this product with household waste [2002/96/EC]. Check your local authority for recycling advice and facilities.

ASSEMBLY

