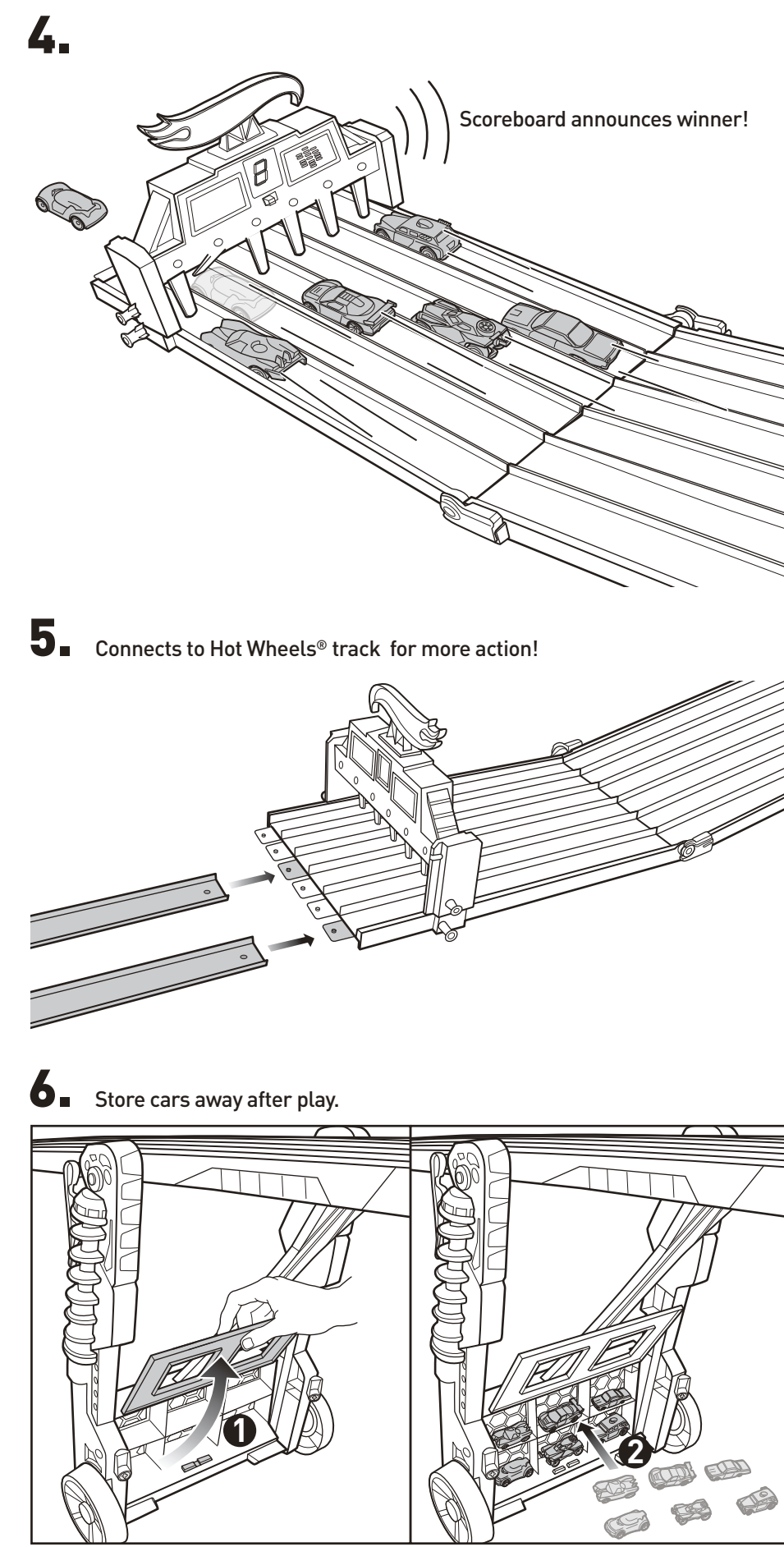
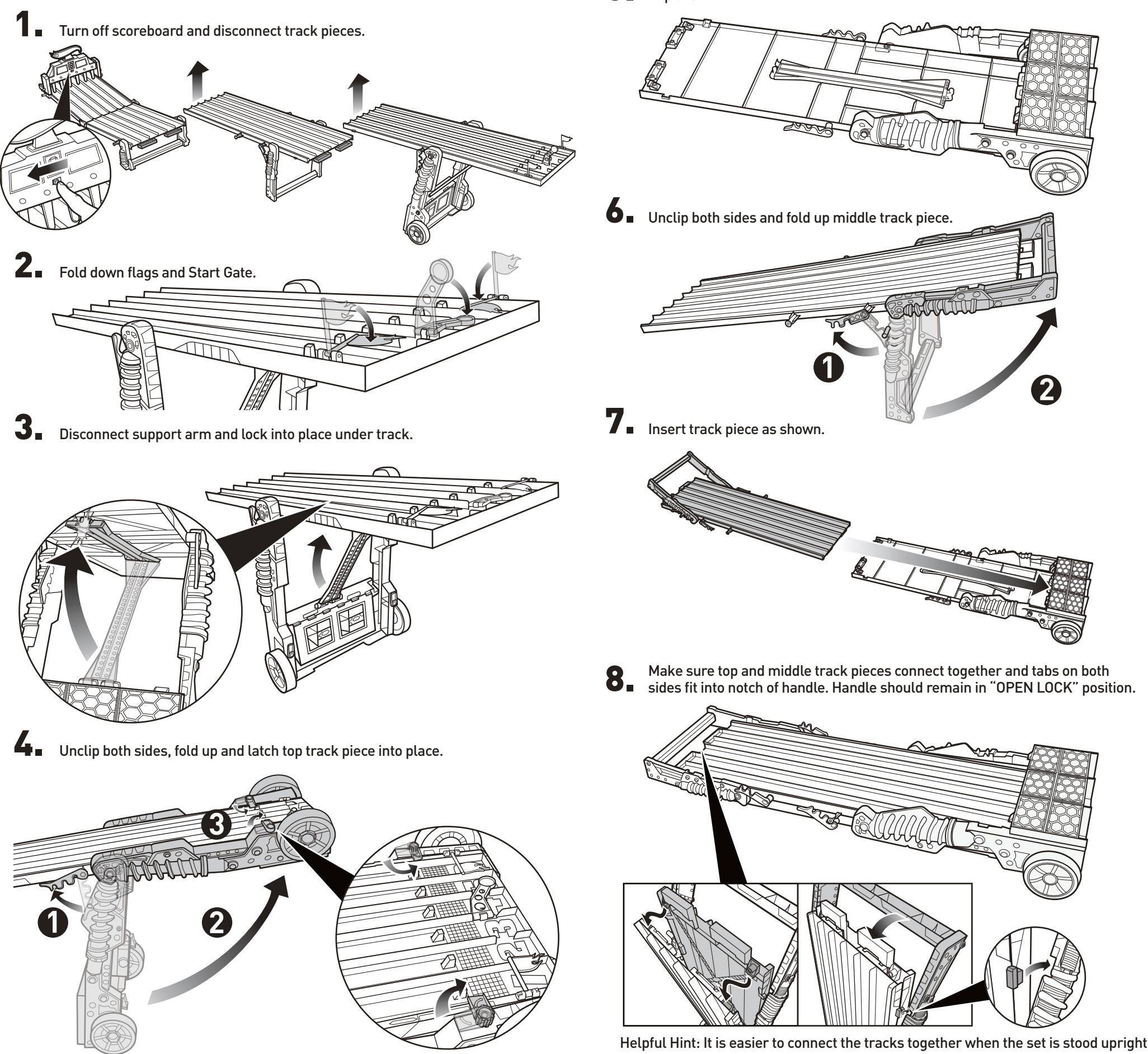


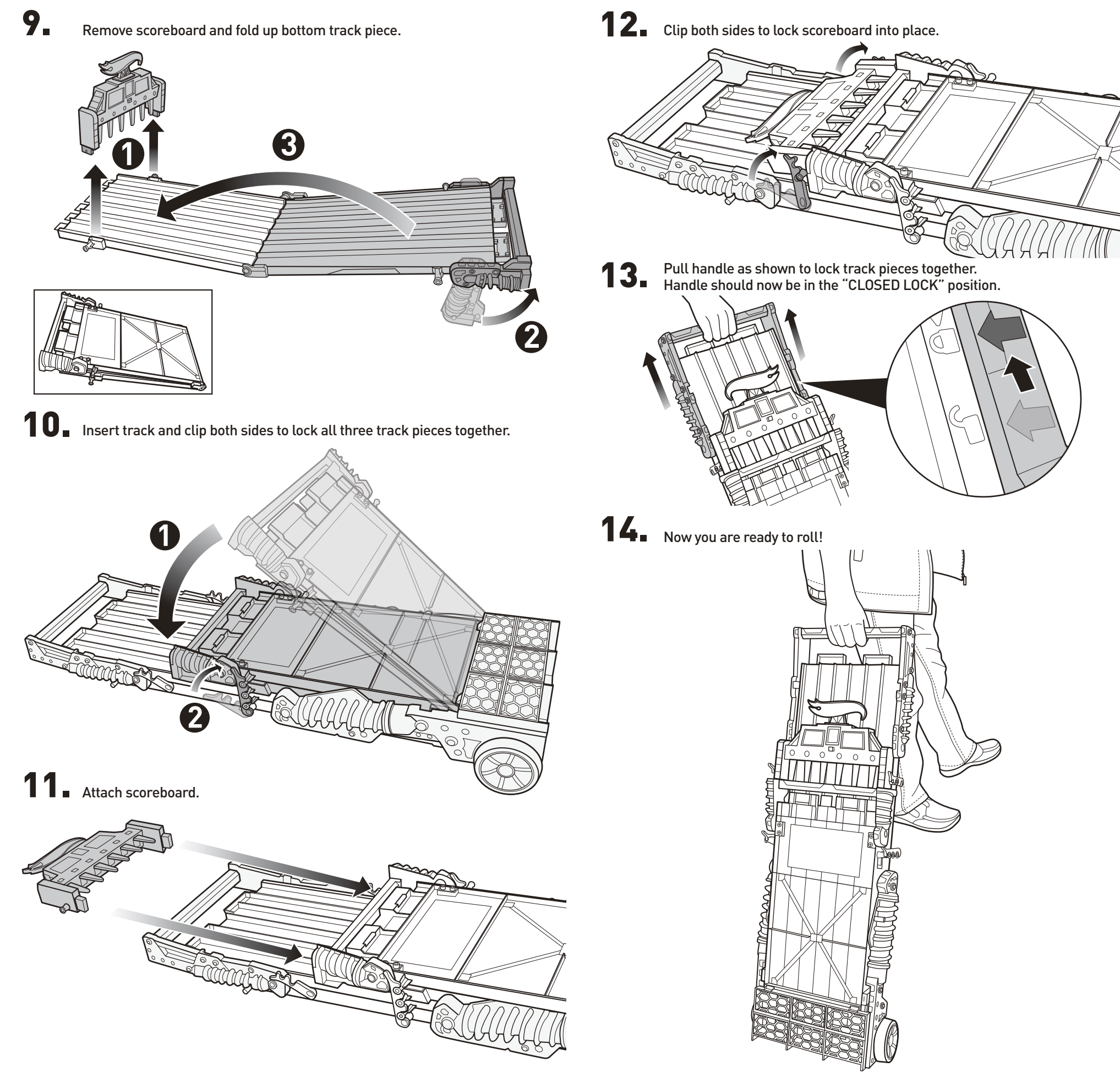
TO PLAY (CONT)



FOLD UP AND GO!



Helpful Hint: It is easier to connect the tracks together when the set is stood upright.



FRONT

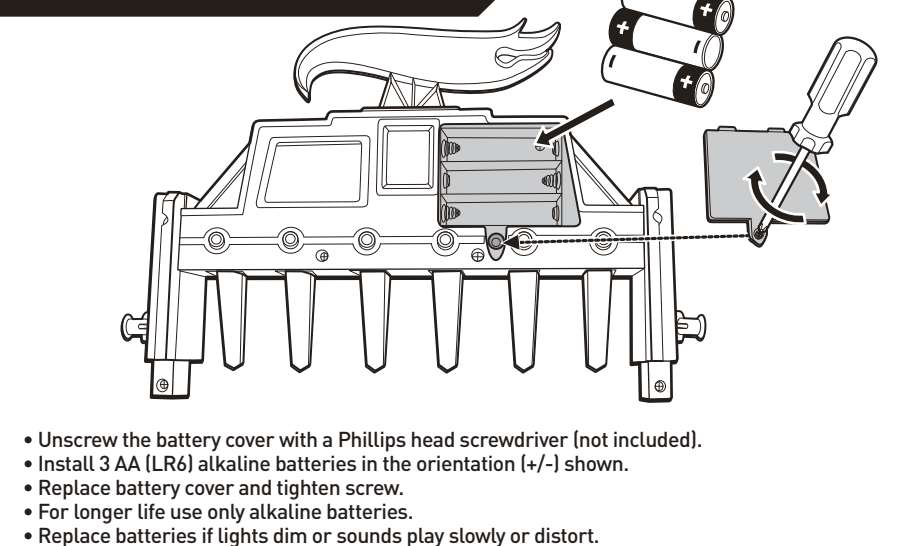
INSTRUCTIONS
Keep these instructions for future reference as they contain important information.

CONTENTS

Requires 3-AA (LR6) batteries, not included.
Dispose of batteries safely.

© 2011 Mattel, Inc. All Rights Reserved. Mattel, Inc. 636 Grand Avenue, East Aurora, NY 14032, U.S.A. Consumer Relations: 1-800-524-8697. Mattel U.K. Ltd., Viewmill Business Park, Maidenhead SL6 6JH, Berkshire G1628 500303. Mattel Australia Pty. Ltd., Richmond, Victoria, 3121 Consumer Advisory Service - 1300 135 312. Mattel East Asia Ltd., Room 1106, South Tower, World Finance Centre, Harbour City, Tsimshatsui, HK, China. Dimpot & Dendarkan Dept. Mattel S&A Pte Ltd 6905523-Pt Lot 13.5, 13th Floor, Menara Lian Hoe, Persiaran Trojena Golf Country Resort, 47410 PJ, Tel: 03-78603817, Fax: 03-78603867, service.mattel.com

INSTALL BATTERIES



- Unscrew the battery cover with a Phillips head screwdriver (not included).
- Install 3 AA (LR6) alkaline batteries in the orientation (+/-) shown.
- Replace battery cover and tighten screw.
- For longer life use only alkaline batteries.
- Replace batteries if lights dim or sounds play slowly or distort.

BATTERY SAFETY INFORMATION

- In exceptional circumstances batteries may leak fluids that can cause a chemical burn injury or ruin your product. To avoid battery leakage:
- Non-rechargeable batteries are not to be recharged.
 - Rechargeable batteries are to be removed from the product before being charged.
 - Rechargeable batteries are only to be charged under adult supervision.
 - Do not mix alkaline, standard (carbon-zinc), or rechargeable (nickel-cadmium) batteries.
 - Do not mix old and new batteries.
 - Only batteries of the same or equivalent type as recommended are to be used.
 - Batteries are to be inserted with the correct polarity.
 - Exhausted batteries are to be removed from the product.
 - The supply terminals are not to be short-circuited.
 - Dispose of batteries safely.
 - Do not dispose of this product in a fire. The batteries inside may explode or leak.

Protect the environment by not disposing of this product with household waste (2002/96/EC). Check your local authority for recycling advice and facilities.

For product sold in USA

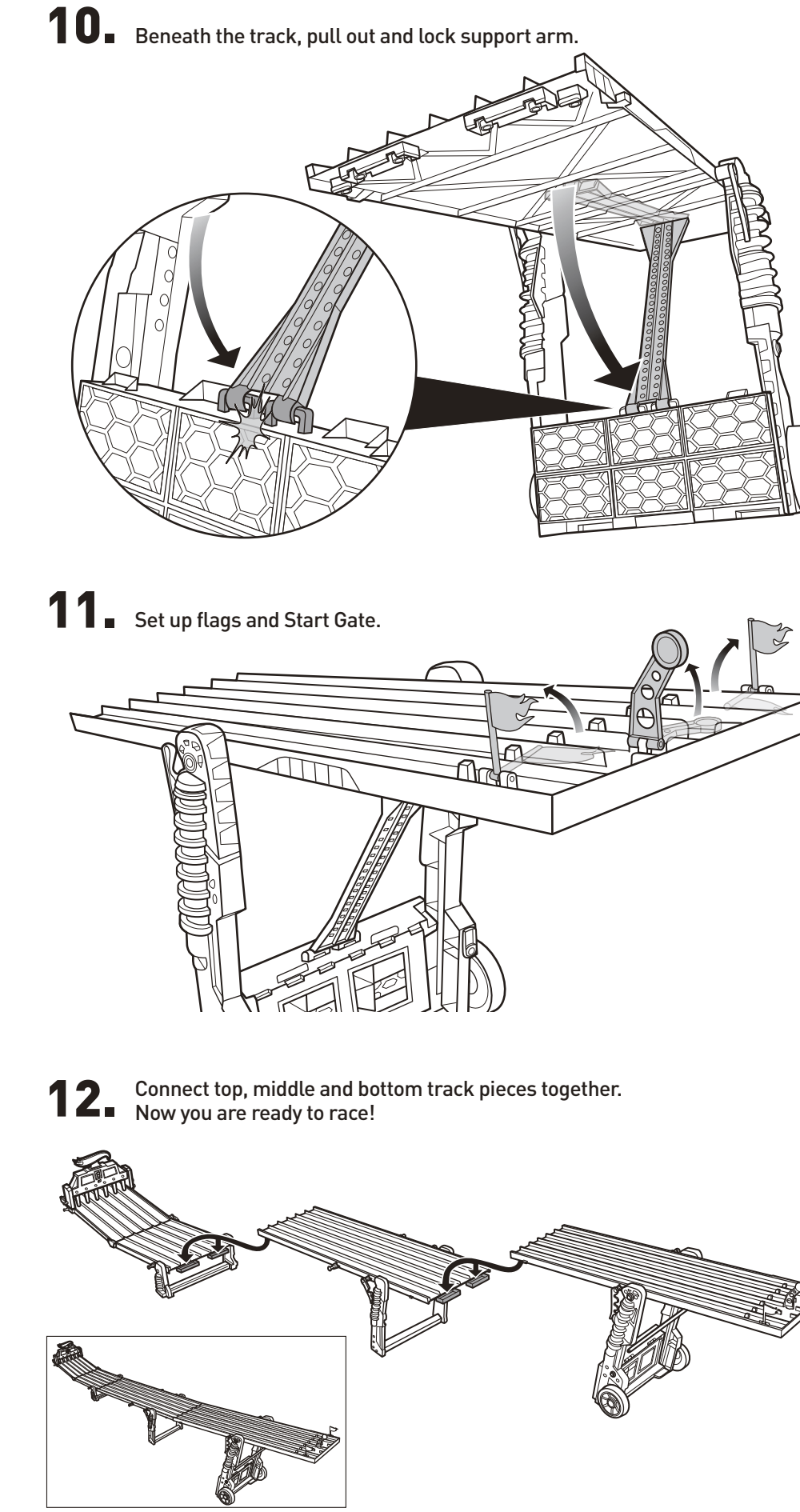
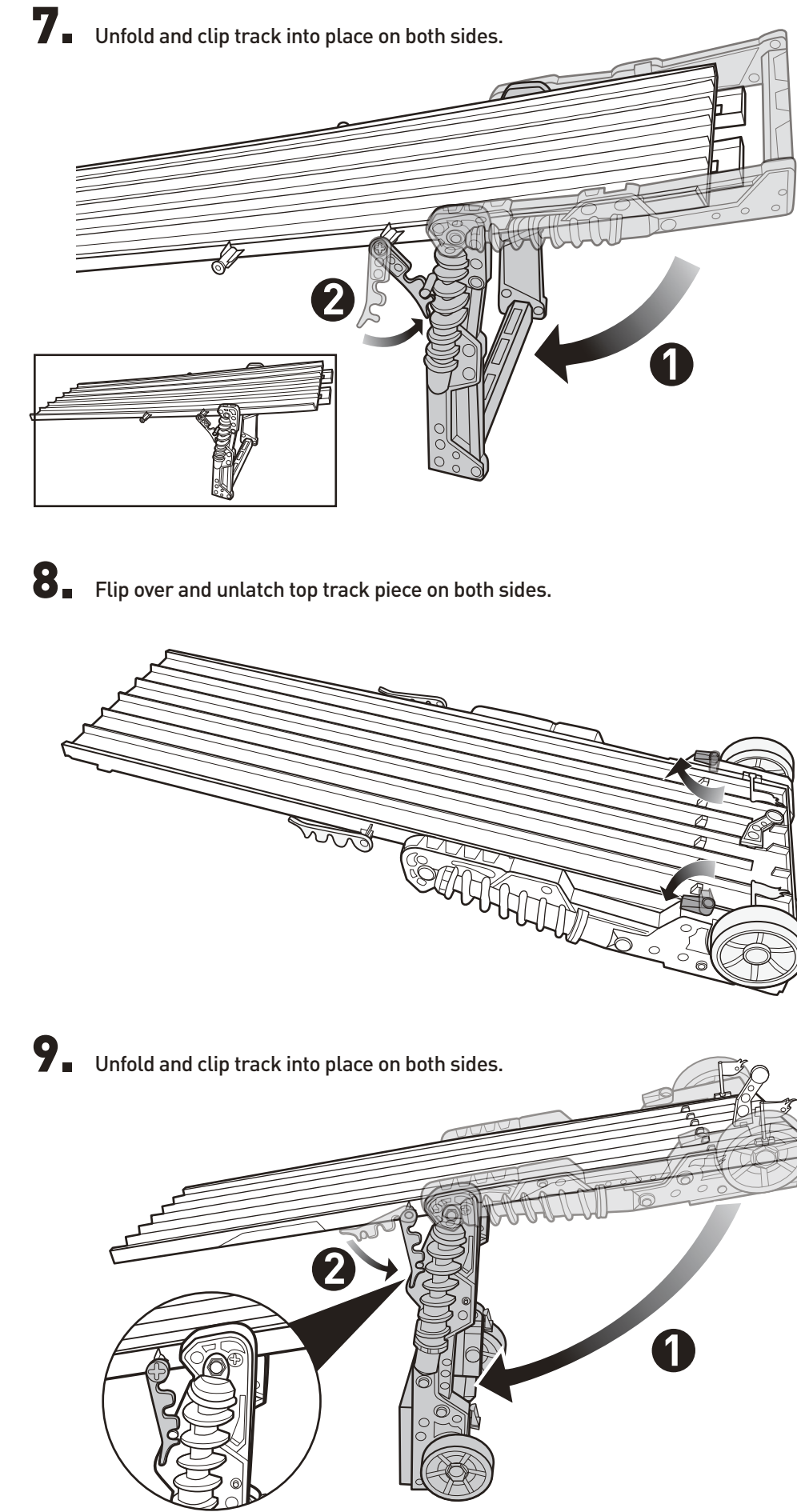
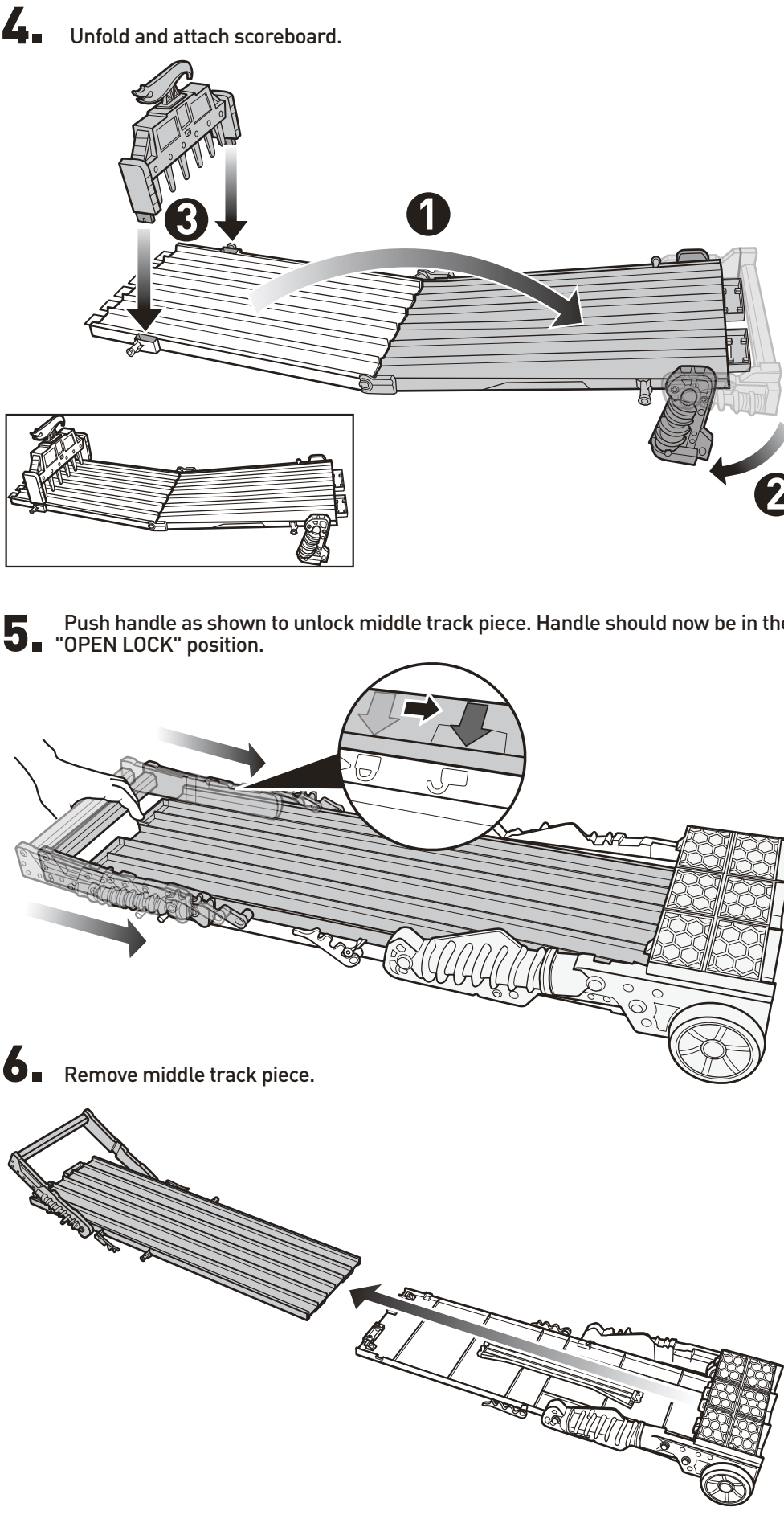
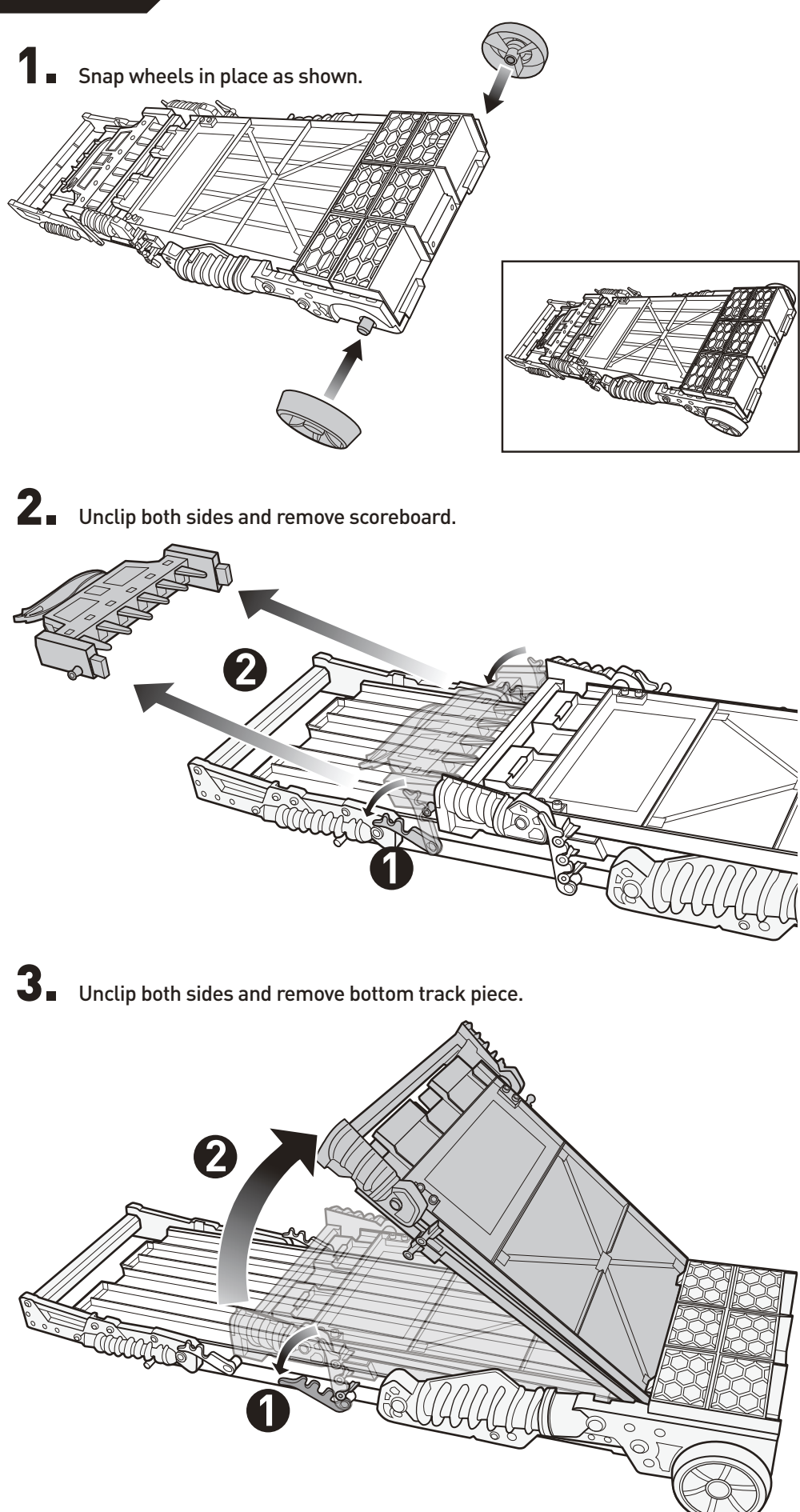
This device complies with Part 15 of the FCC Rules. Operation is subject to the following two conditions: (1) This device may not cause harmful interference, and (2) this device must accept any interference received, including interference that may cause undesired operation.

This equipment has been tested and found to comply with the limits for a Class B digital device, pursuant to part 15 of the FCC rules. These limits are designed to provide reasonable protection against harmful interference in a residential installation. This equipment generates, uses and can radiate radio frequency energy and, if not installed and used in accordance with the instructions, may cause harmful interference to radio communications. However, there is no guarantee that interference will not occur in a particular installation. If this equipment does cause harmful interference to radio or television reception, which can be determined by turning the equipment off and on, the user is encouraged to try to correct the interference by one or more of the following measures:

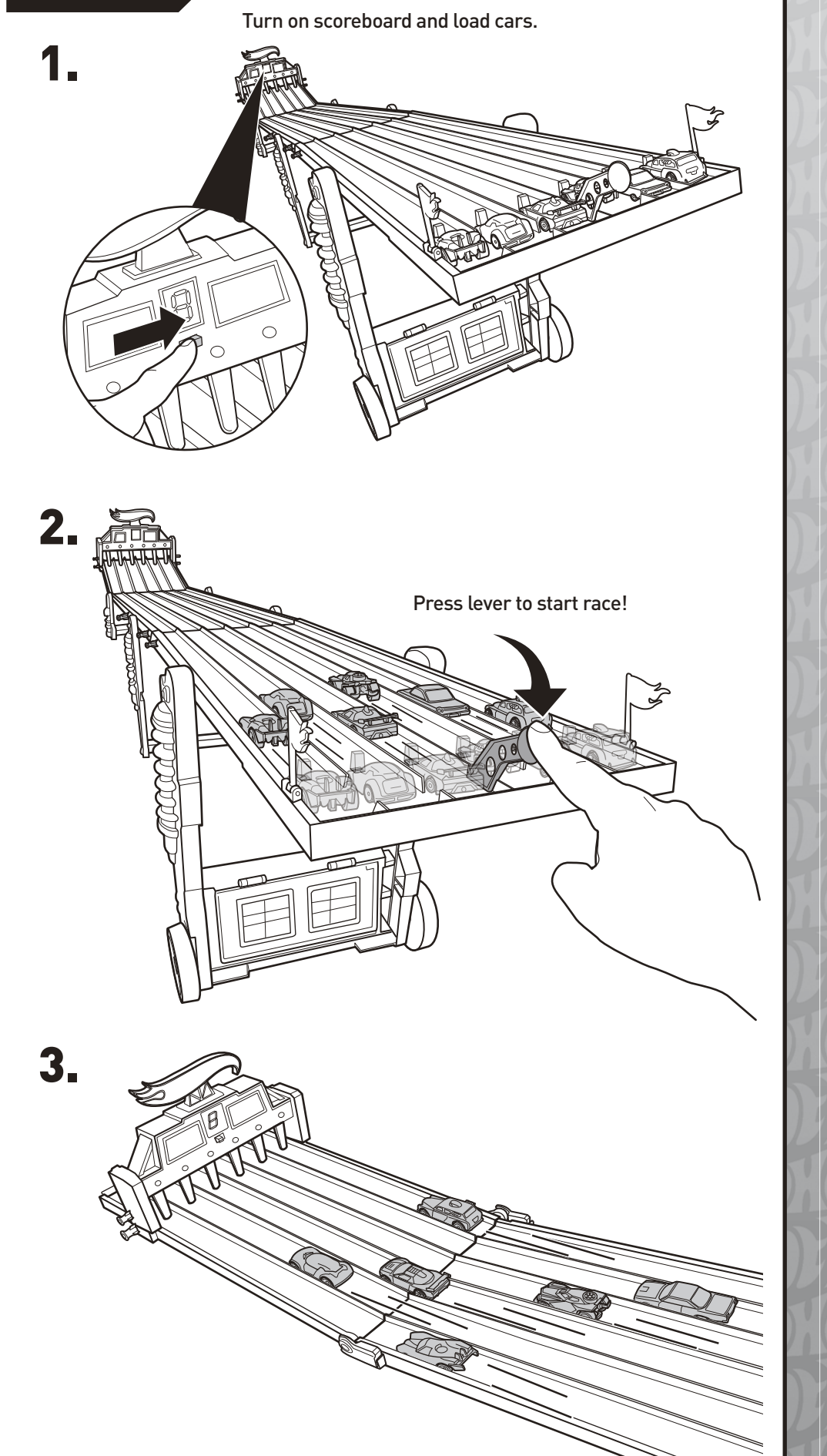
- Reorient or relocate the receiving antenna.
- Increase the separation between the equipment and receiver.
- Connect the equipment into an outlet on a circuit different from that to which the receiver is connected.
- Consult the dealer or an experienced radio/TV technician for help.

NOTE: Changes or modifications not expressly approved by the manufacturer responsible for compliance could void the user's authority to operate the equipment.

SET UP



TO PLAY



BACK

INSTRUCTION SHEET SPECIFICATIONS		Folding Dummy									
		FRONT					BACK				
Top No.	V1983										
Part No.	0920										
Net Size	33" W x 11" H										
Folded Size	5.5" W x 11" H										
Type of Fold	See Dummy										
Colors	One										
Color	Black										
Paper Stock	White Offset										
Paper Weight	70 lb.										
EDM No.	004										
Date	Feb. 22, 2011										