

TO
PLAY

Switch vehicles ON and let's race!

Battery Safety Information

In exceptional circumstances batteries may leak fluids that can cause a chemical burn injury or ruin your product. To avoid battery leakage:

- Non-rechargeable batteries are not to be recharged.
- Rechargeable batteries are to be removed from the product before being charged.
- Rechargeable batteries are only to be charged under adult supervision.
- Do not mix alkaline, standard (carbon-zinc), or rechargeable (nickel-cadmium) batteries.
- Do not mix old and new batteries.
- Only batteries of the same or equivalent type as recommended are to be used.
- Batteries are to be inserted with the correct polarity.
- Exhausted batteries are to be removed from the product.
- The supply terminals are not to be short-circuited.
- Dispose of battery(ies) safely.
- Do not dispose of this product in a fire. The batteries inside may explode or leak.



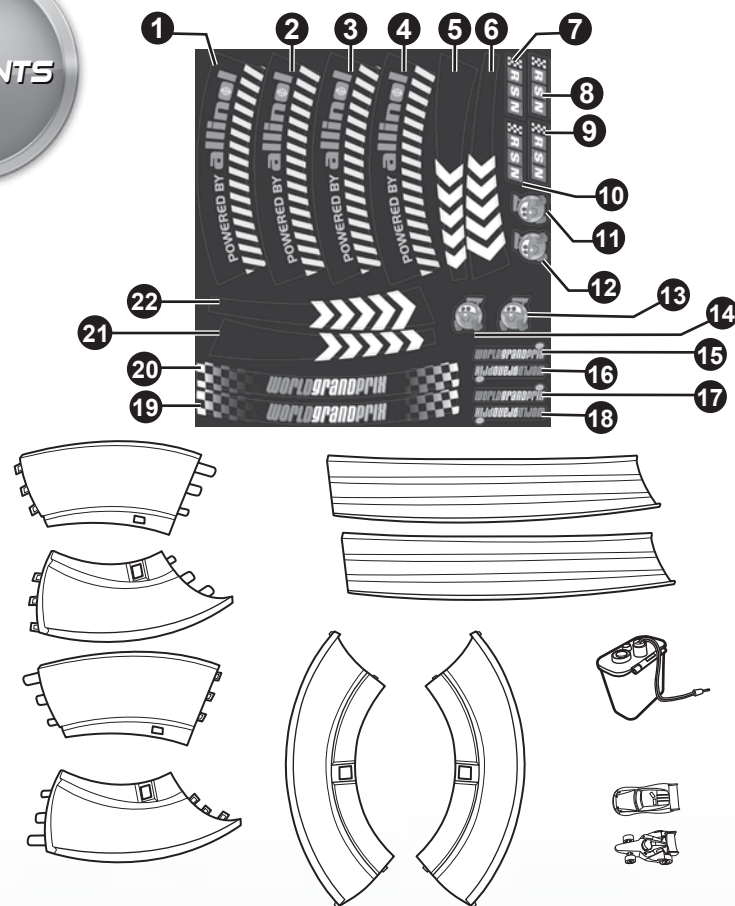
Protect the environment by not disposing of this product with household waste (2002/96/EC).
Check your local authority for recycling advice and facilities.



INSTRUCTIONS

Please keep these instructions for future reference as they contain important information.

CONTENTS



© 2010 Mattel, Inc. All Rights Reserved.
Mattel, Inc., 636 Girard Avenue, East Aurora, NY 14052, U.S.A. Consumer Relations 1-800-524-8697. Mattel U.K. Ltd., Vanwall Business Park, Maidenhead SL6 4UB. Helpline 01628 500303. Mattel Australia Pty. Ltd., Richmond, Victoria. 3121. Consumer Advisory Service - 1300 135 312. Mattel East Asia Ltd., Room 1106, South Tower, World Finance Centre, Harbour City, Tsimshatsui, HK, China. Diimport & Diedarkan Oleh: Mattel SEA Ptd Ltd.(993532-P) Lot 13.5, 13th Floor, Menara Lien Hoe, Persiaran Tropicana Golf Country Resort, 47410 PJ. Tel:03-78803817, Fax:03-78803867.

© Disney/Pixar

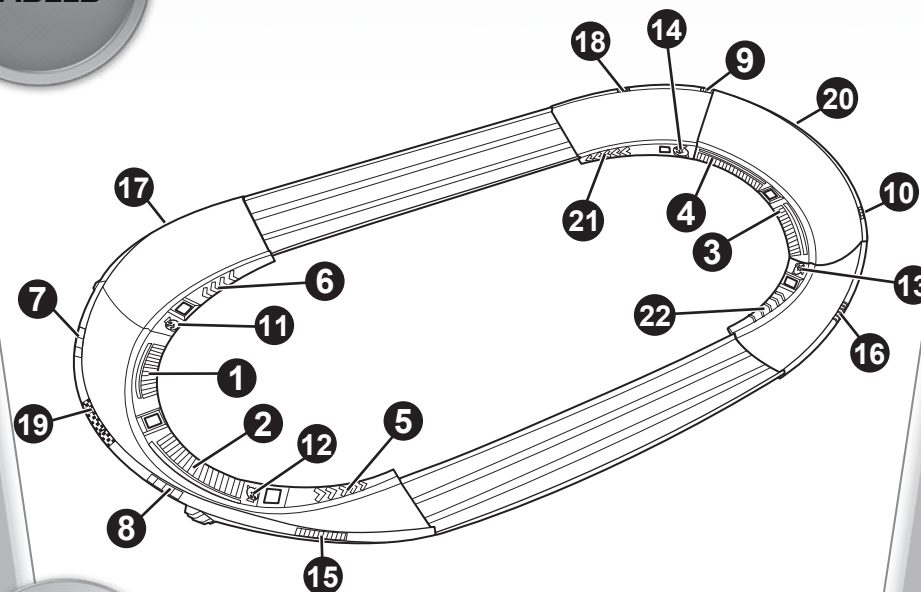
service.mattel.com

V5103-0920

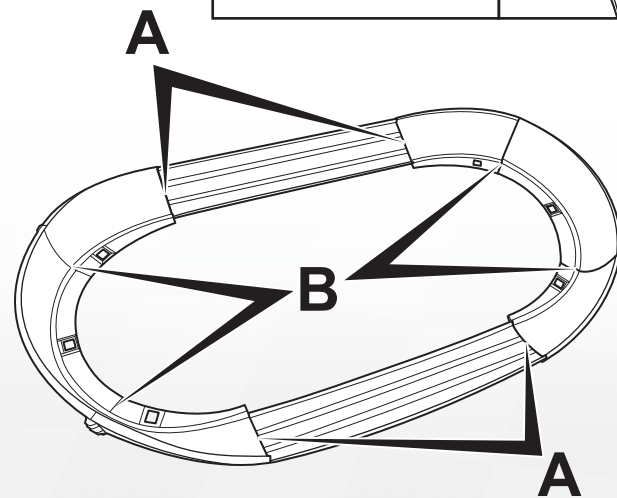
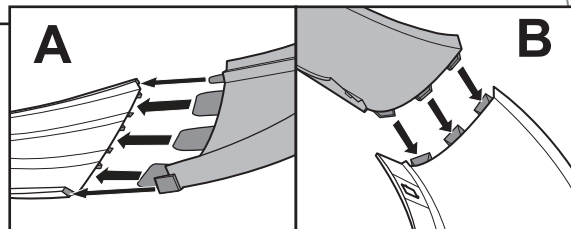


APPLY
LABELS

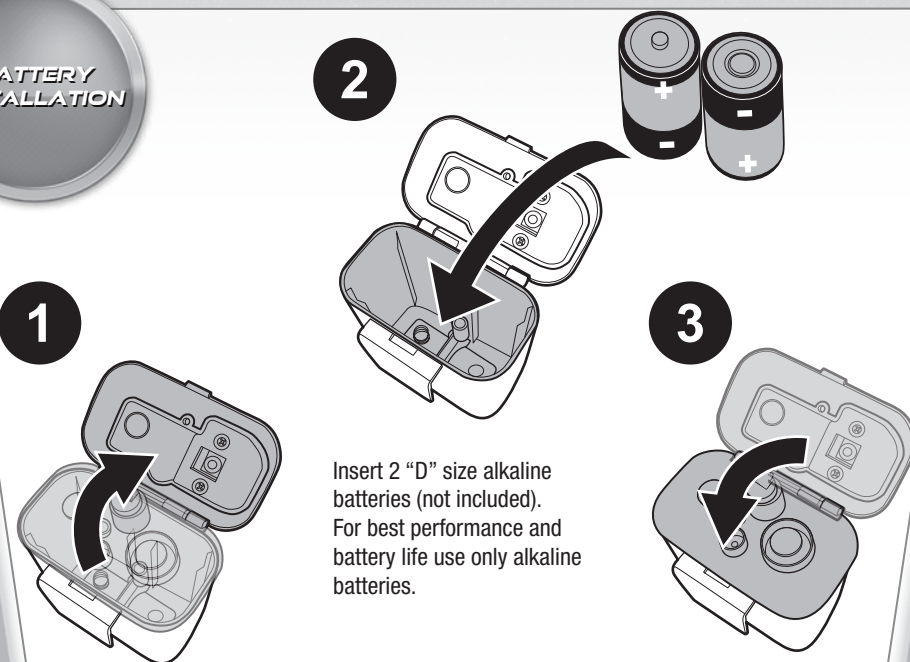
Helpful Hint: Apply labels before assembly by number as indicated.



ASSEMBLY

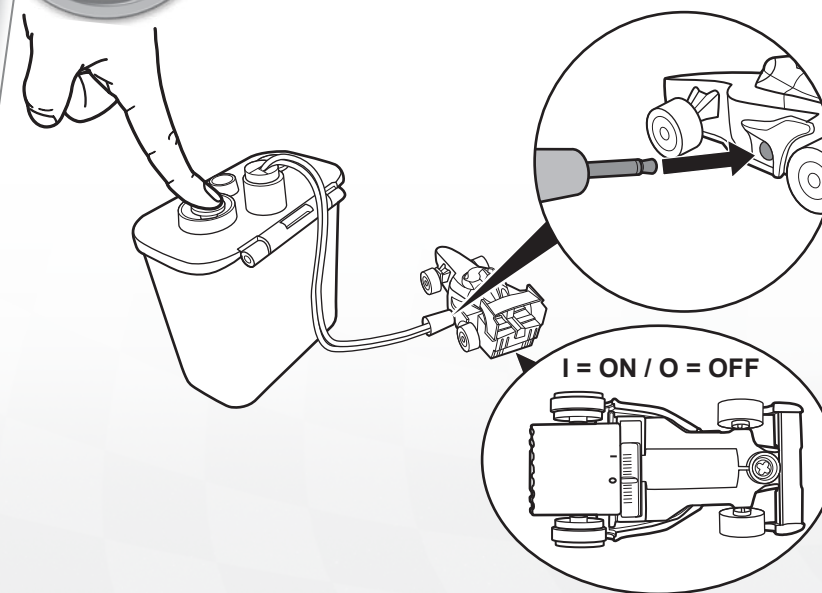


BATTERY
INSTALLATION



CHARGE

Connect and press for 30 seconds to charge vehicle.



INSTRUCTION SHEET
SPECIFICATIONS

Toy: CARS CHARGE-UPS TRACK SET
Toy No.: V5103
Part No.: 0920
Trim Size: A4
Folded Size: A5
Type of Fold: accordian
colors: 1C+1C
Colors: Black
Paper Stock: White Offset
Paper Weight: 70 lb.
EDM No.: 001

Folding Dummy

