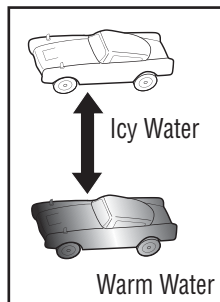
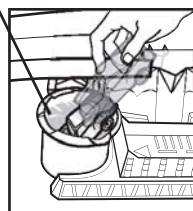


2 Launch for waterfall and mid-air color change!



Warm Water

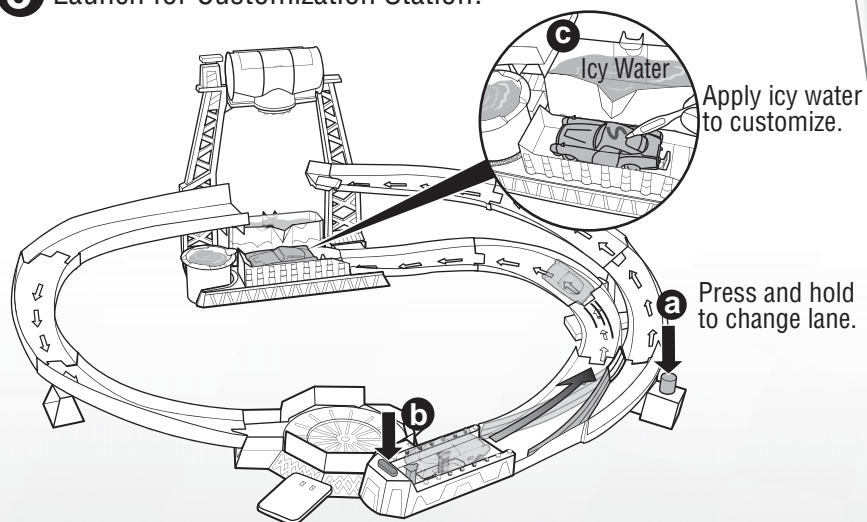


Dip car in warm water to change color back.

To avoid burns, do not use water that is too hot, above 120°F/49°C.

For best performance of color change feature, please use icy water under 50°F/10°C.

3 Launch for Customization Station!



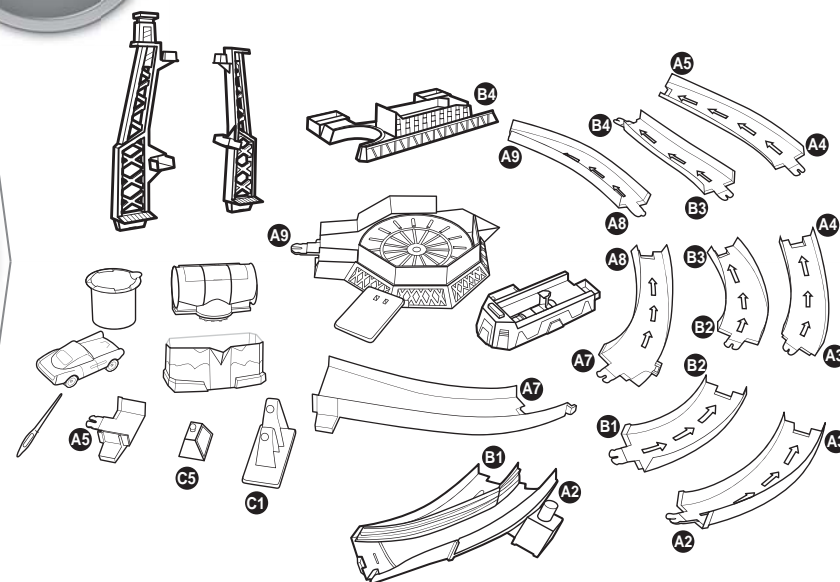
Water toys sometimes get messy. Protect play surfaces before use. Drain, rinse, clean and dry all items thoroughly before storing. Color change will last longer if you do not expose this toy to intense heat or direct sunlight.



INSTRUCTIONS

Please keep these instructions for future reference as they contain important information.

CONTENTS



© 2011 Mattel, Inc. All Rights Reserved.

Mattel, Inc., 636 Girard Avenue, East Aurora, NY 14052, U.S.A. Consumer Relations 1-800-524-8697. Mattel U.K. Ltd., Vanwall Business Park, Maidenhead SL6 4UB. Helpline 01628 500303. Mattel Australia Pty., Ltd., Richmond, Victoria. 3121. Consumer Advisory Service - 1300 135 312. Mattel East Asia Ltd., Room 1106, South Tower, World Finance Centre, Harbour City, Tsimshatsui, HK, China. Diimport & Diedarkan Oleh: Mattel SEA Ptd Ltd. (993532-P) Lot 13.5, 13th Floor, Menara Lien Hoe, Persiaran Tropicana Golf Country Resort, 47410 PJ. Tel: 03-78803817, Fax: 03-78803867.

V6235-0920

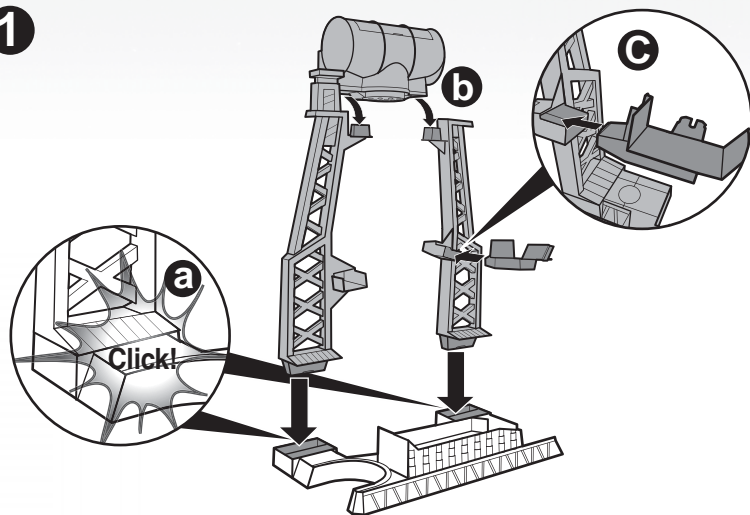
© Disney/Pixar

service.mattel.com

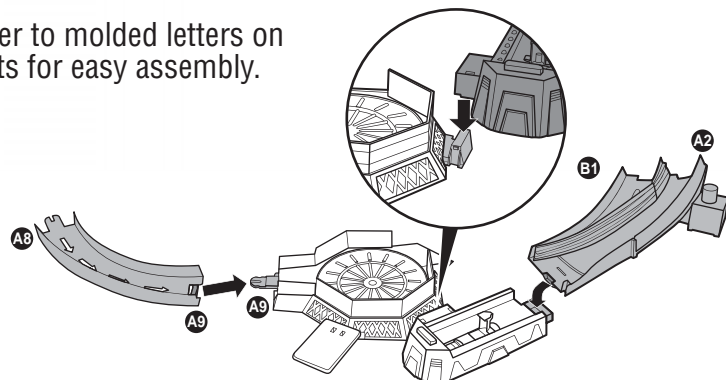


ASSEMBLY

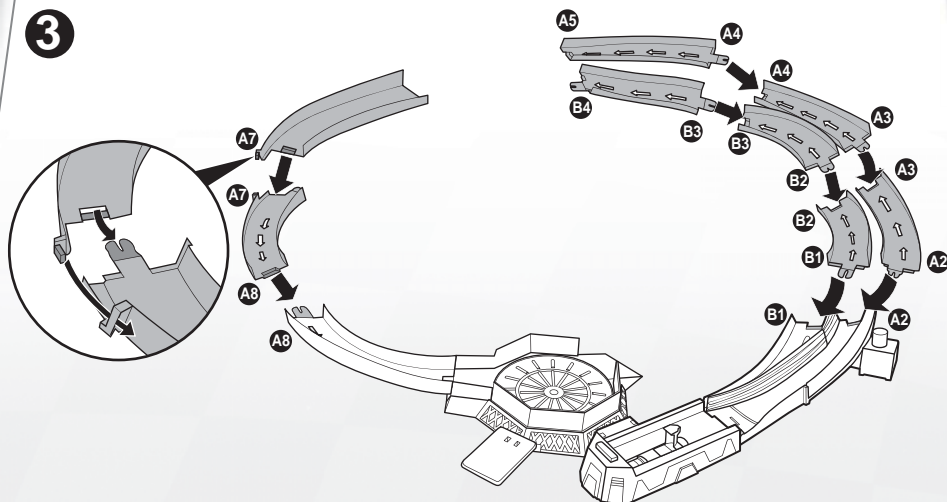
1



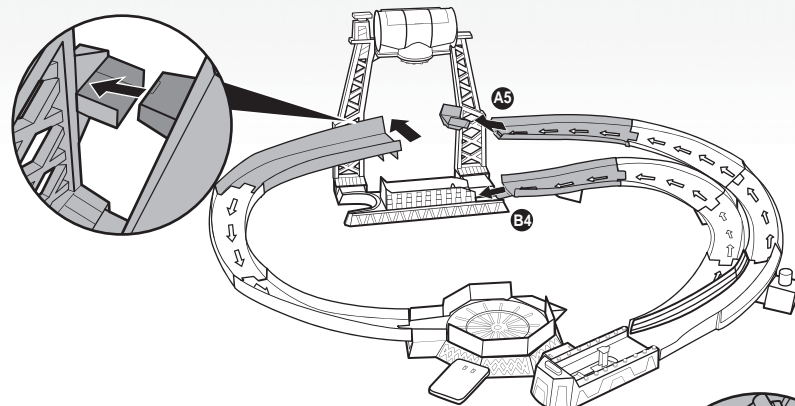
2 Refer to molded letters on parts for easy assembly.



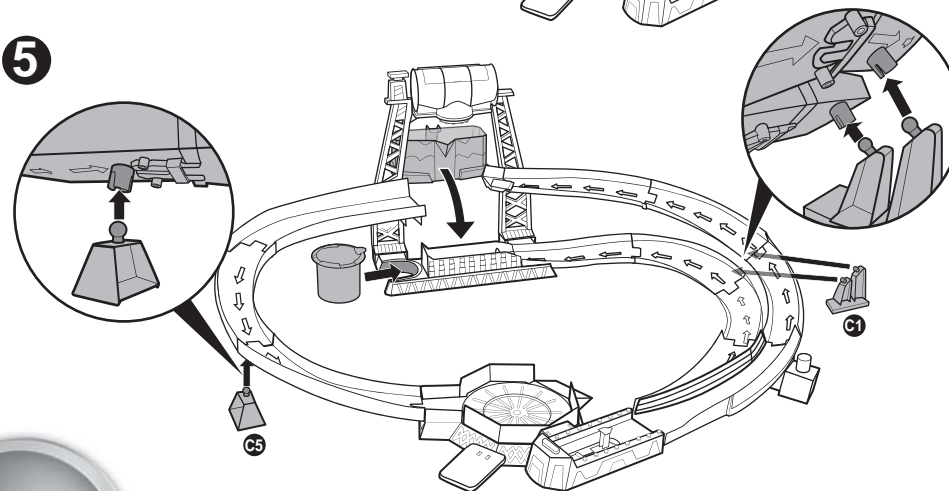
3



4



5



TO PLAY

1 Set up as shown.

