

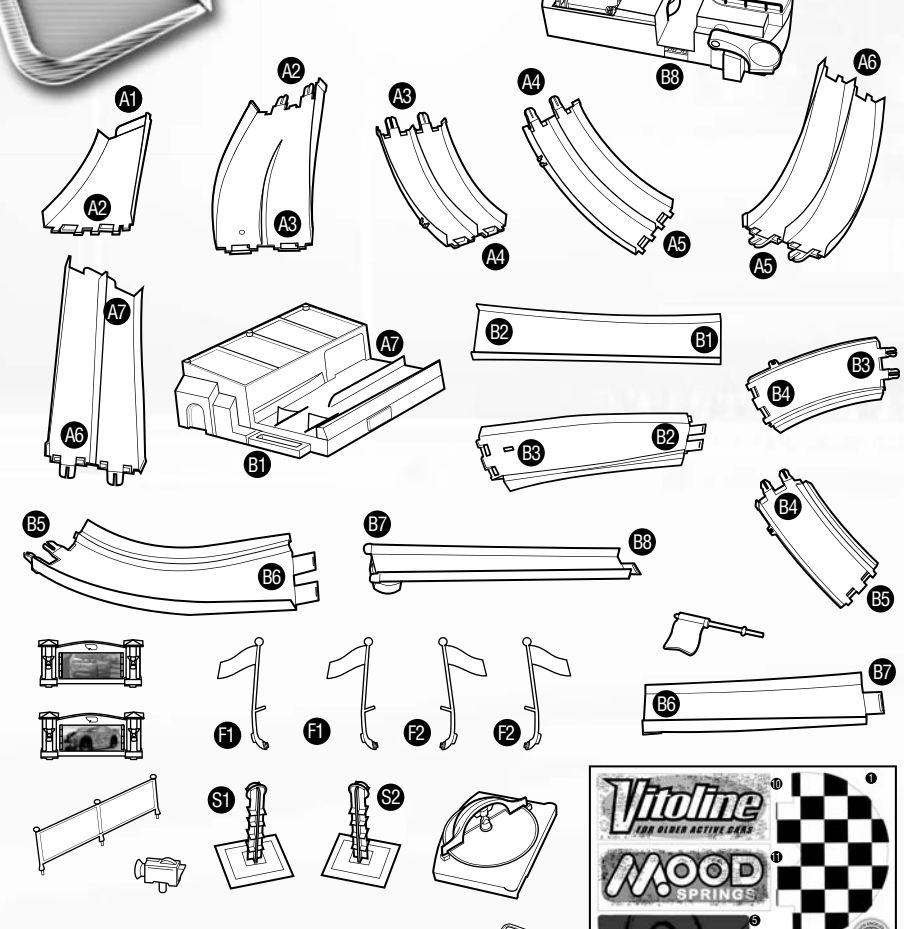
This is a battery-operated product.
1 1/2 hr (00001-29065) is required
to be placed inside the packaging.



INSTRUCTIONS

Please keep these instructions for future reference as they contain important information.

CONTENTS



WARNING:
CHOKING HAZARD - Small parts.
Not for children under 3 years.

Requires 3 "D" (LR20) alkaline batteries (not included).
Adult assembly required.

LABEL SHEET

Mattel, Inc. All Rights Reserved.
Mattel, Inc. 535 Grant Avenue, East Aurora, NY 14052, U.S.A. Consumer Relations 1-800-524-9087. Mattel U.K. Ltd., Vauxhall Business Park, Watlington, S.S. 16R, Watlington, OX29 3DQ, Oxford, UK. Consumer Relations 1-800-524-9087.
Mattel East Asia Ltd., Room 1108, South Tower, World Finance Centre, Harbour City, Toronto, ON, Canada. Consumer Relations 1-800-524-9087.
Mattel S.A. P.O. Box 1000000, Los Angeles, CA 90010, U.S.A. Consumer Relations 1-800-524-9087.
Plymouth Superbird is a trademark of Chrysler LLC. Petty marks used by permission of Petty Marketing LLC. V0285-0820
Mercury is a registered trademark of Ford Motor Company.
Hudson Hornet is a trademark of Chrysler LLC.
Porsche is a trademark of Porsche.
© Disney/Pixar
service.mattel.com

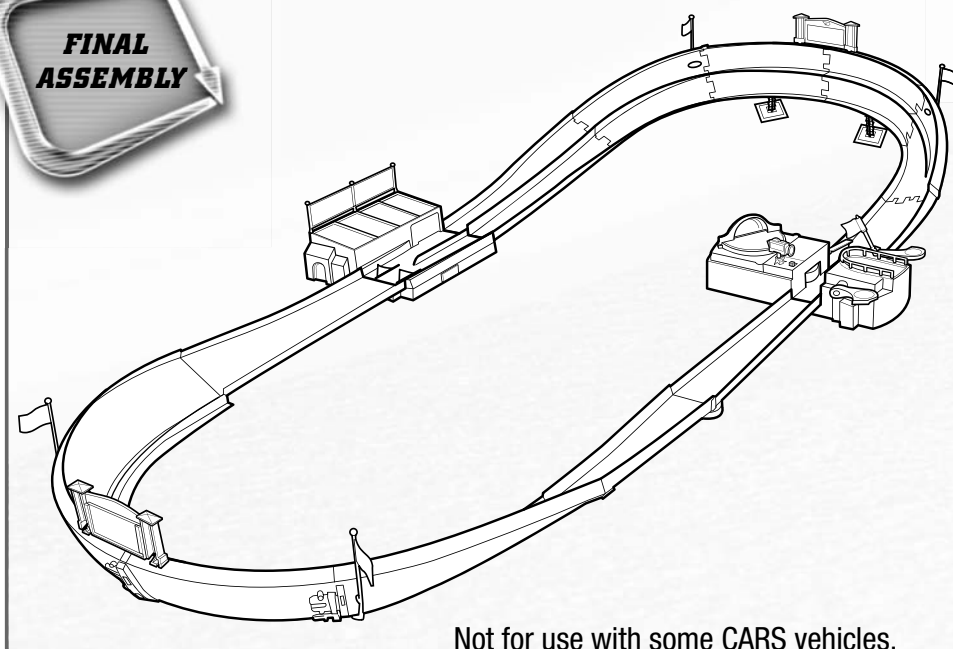


Open battery cover and insert 3 "D" size alkaline batteries (not included) as shown. For best performance, use alkaline batteries. When booster is unable to propel vehicles through the set, replace the batteries.



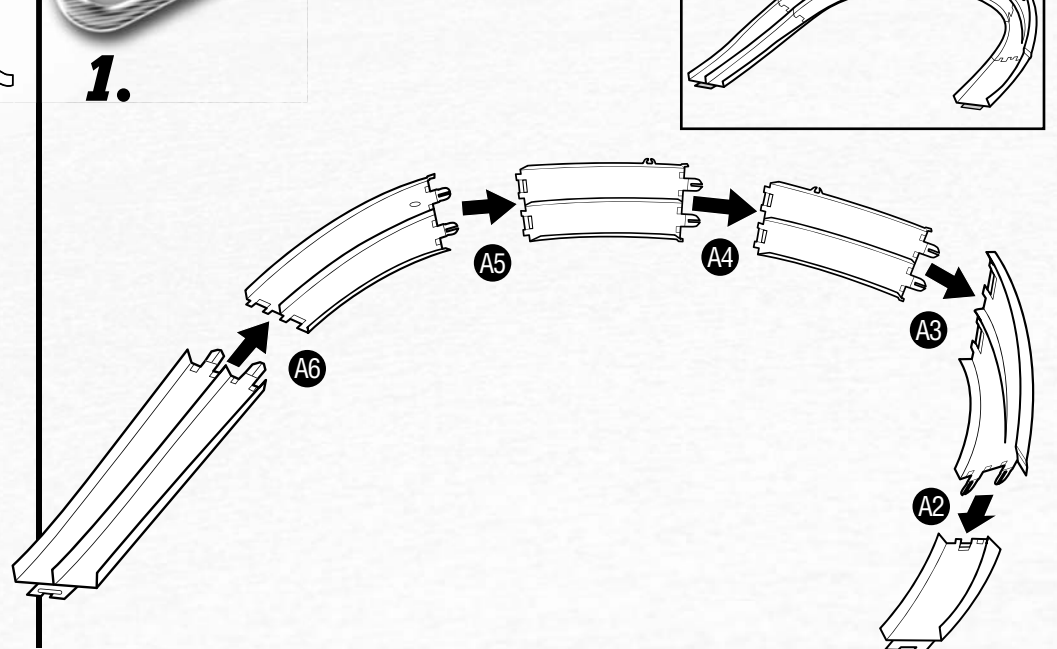
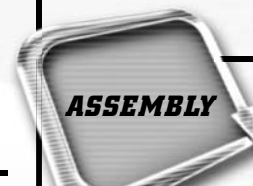
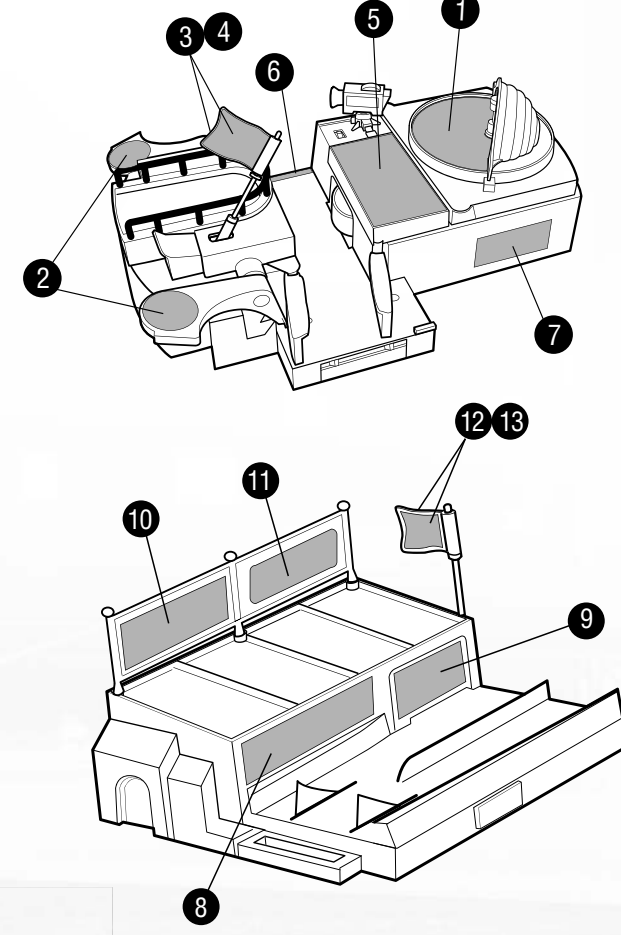
Refer to numbers on parts and contents page to help with assembly.

SAFETY NOTE: Do not launch cars until toy is completely assembled.

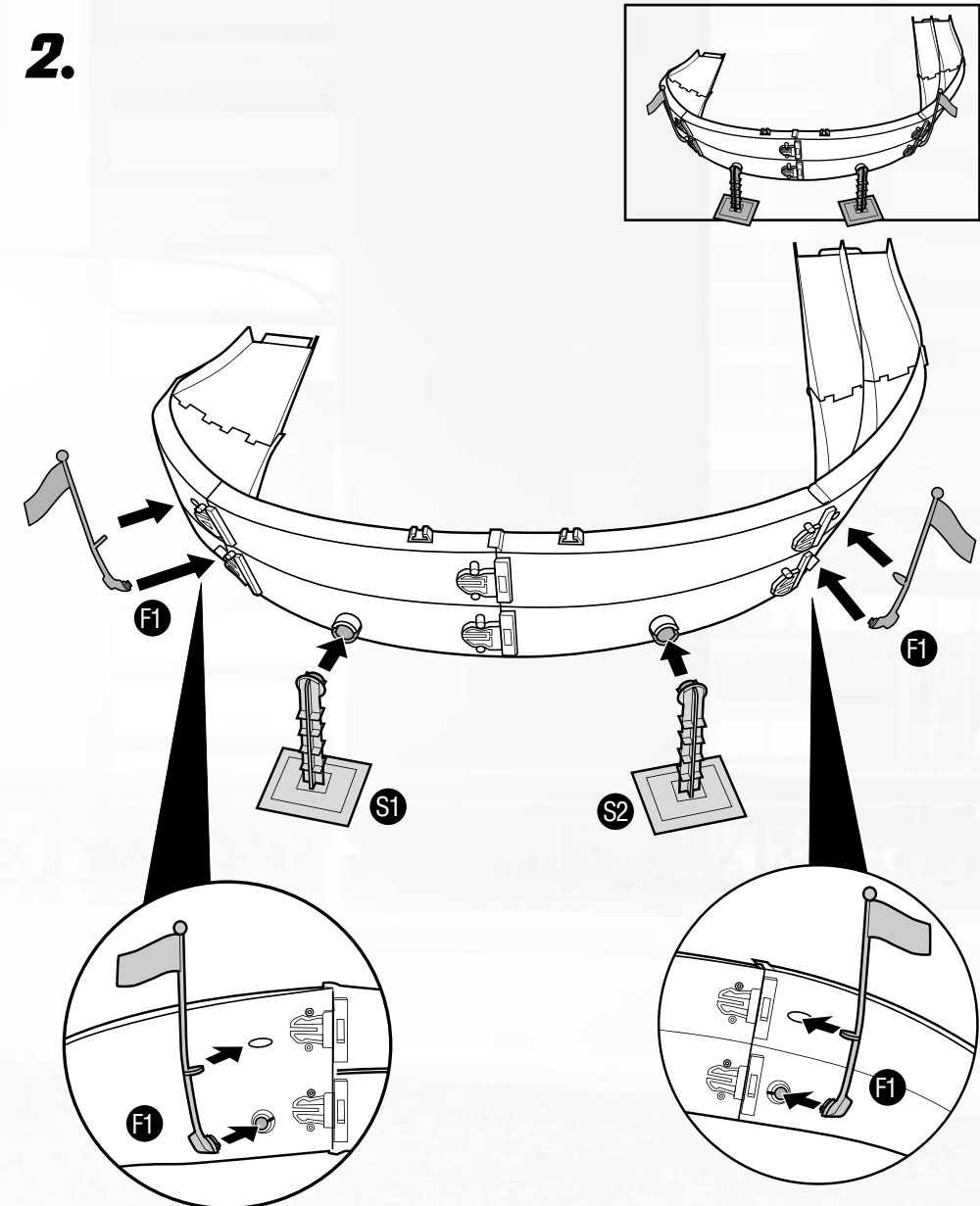


Not for use with some CARS vehicles.

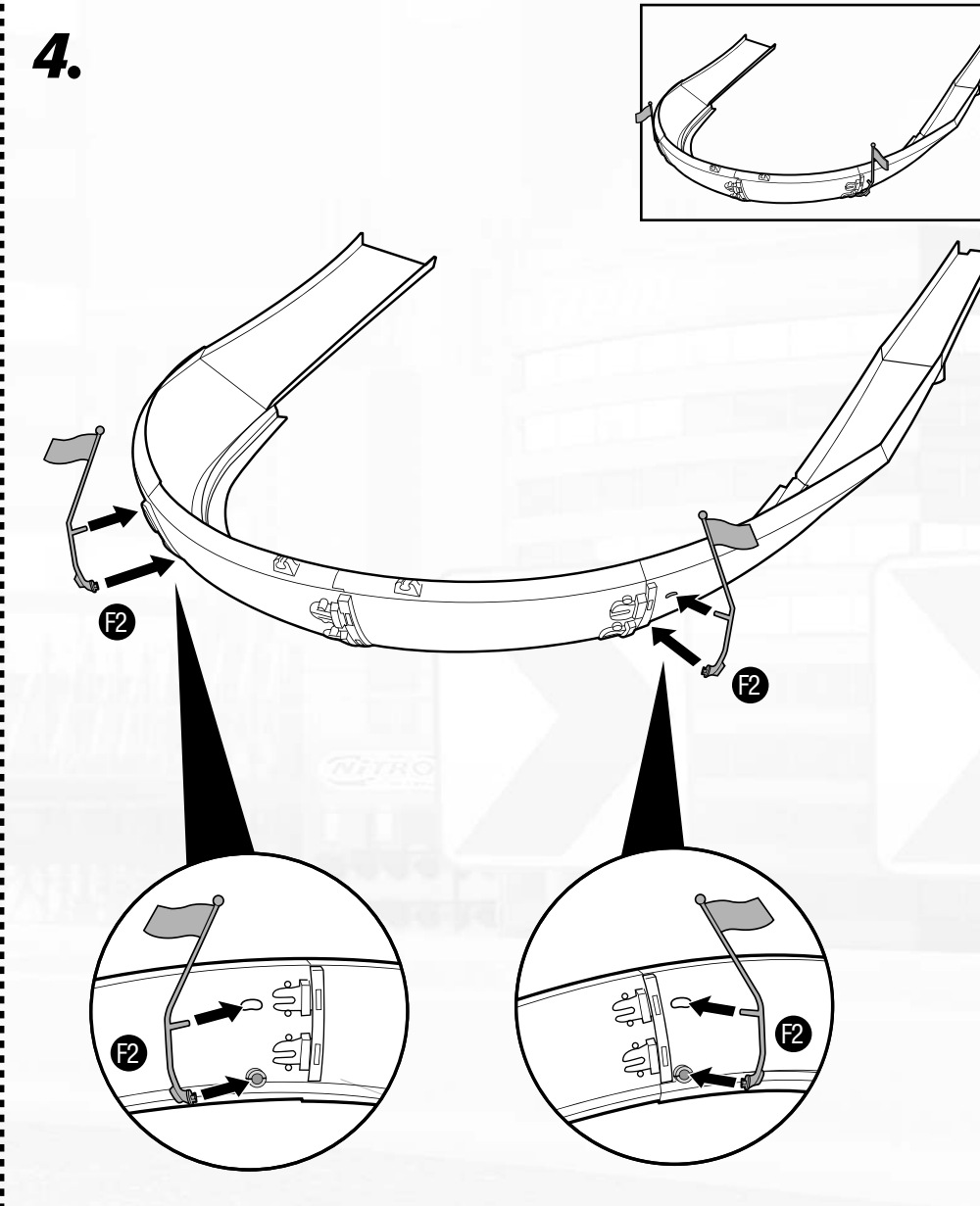
APPLY LABELS BY NUMBER AS INDICATED.
HELPFUL HINT: APPLY LABELS BEFORE ASSEMBLY.



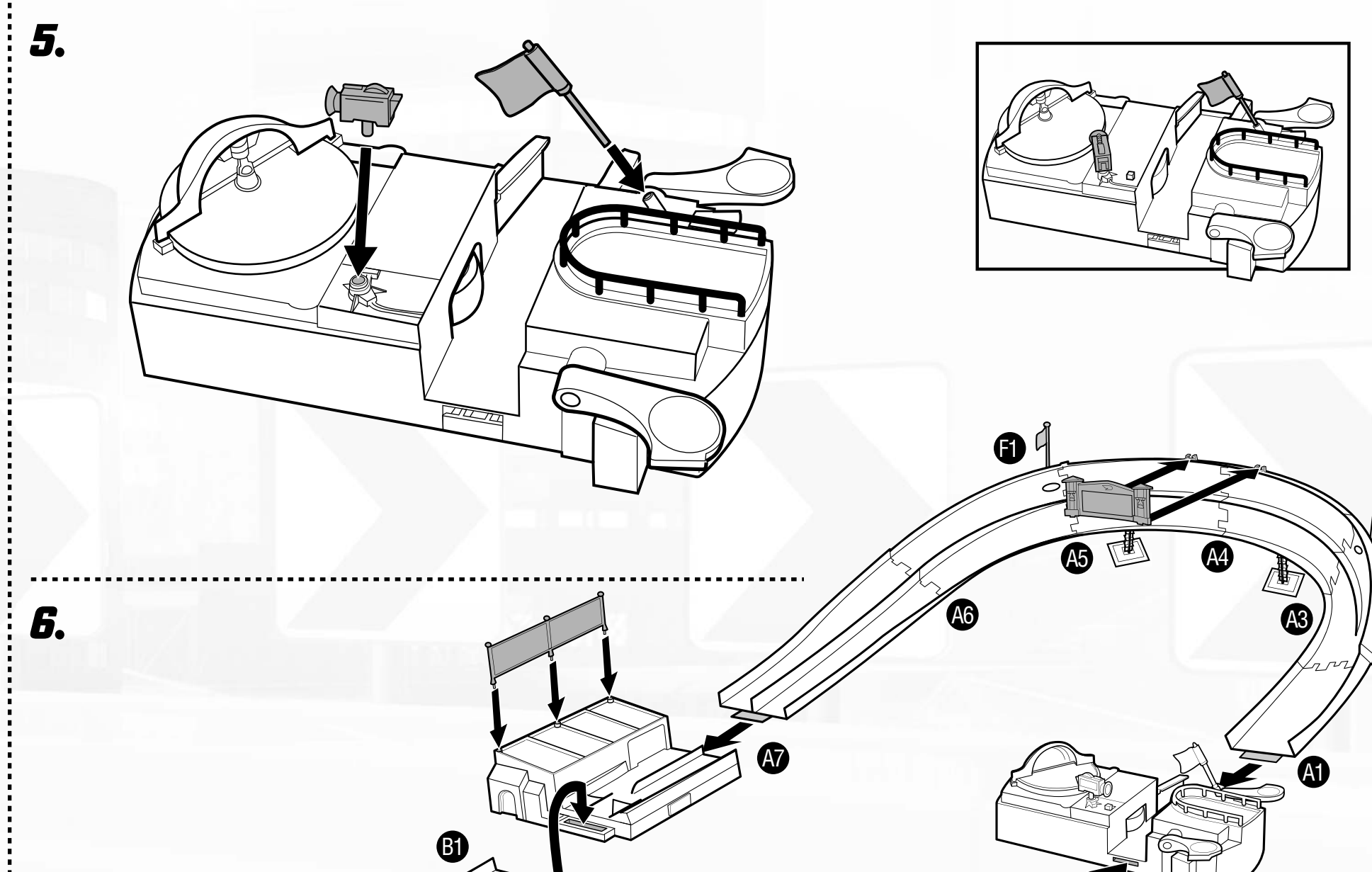
2.



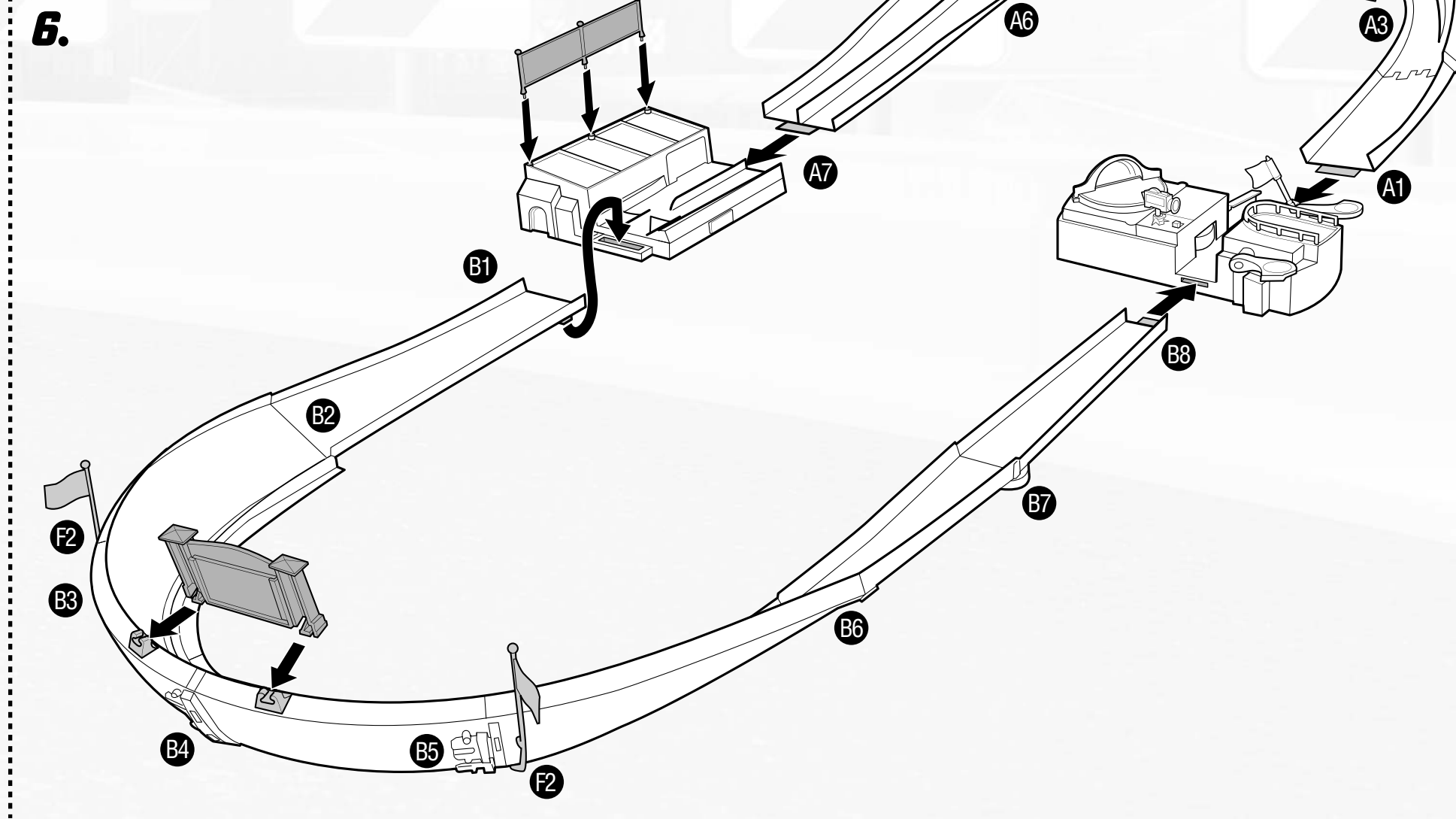
4.



5.

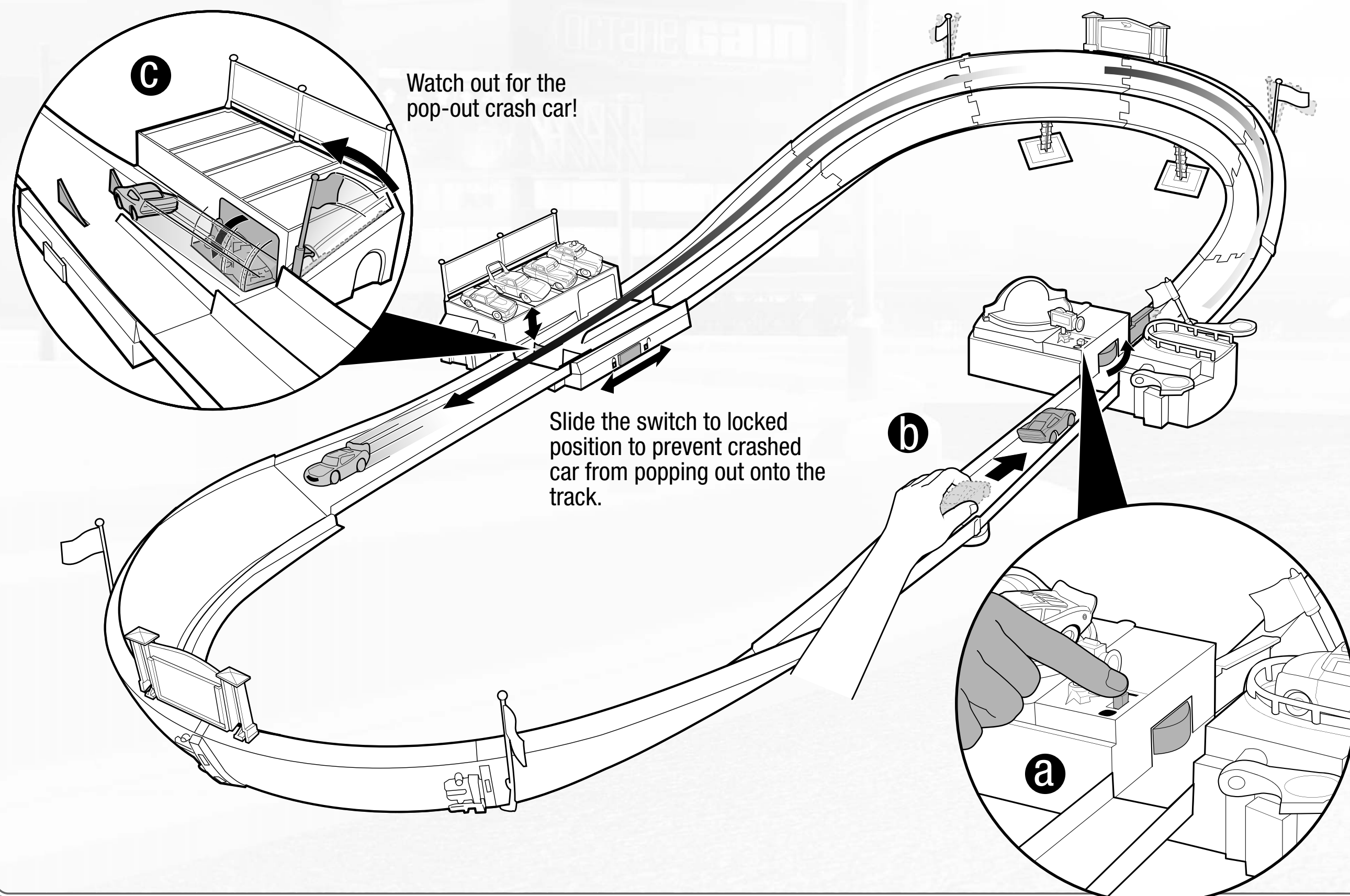


6.



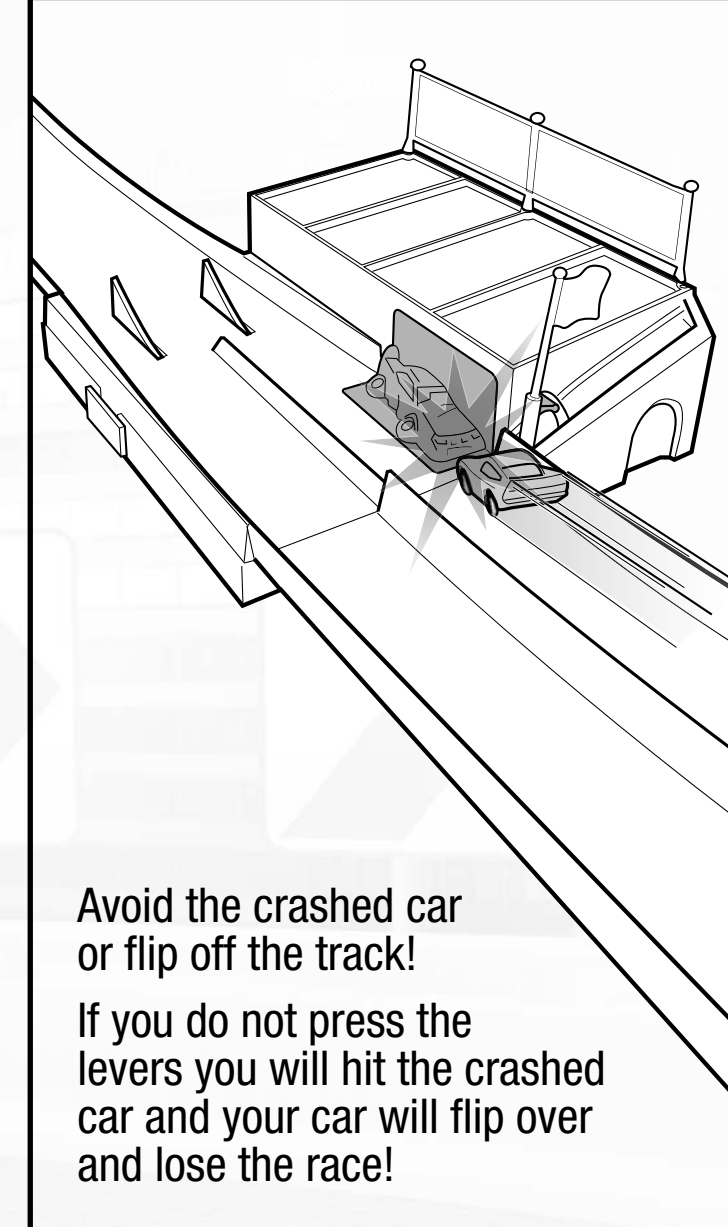
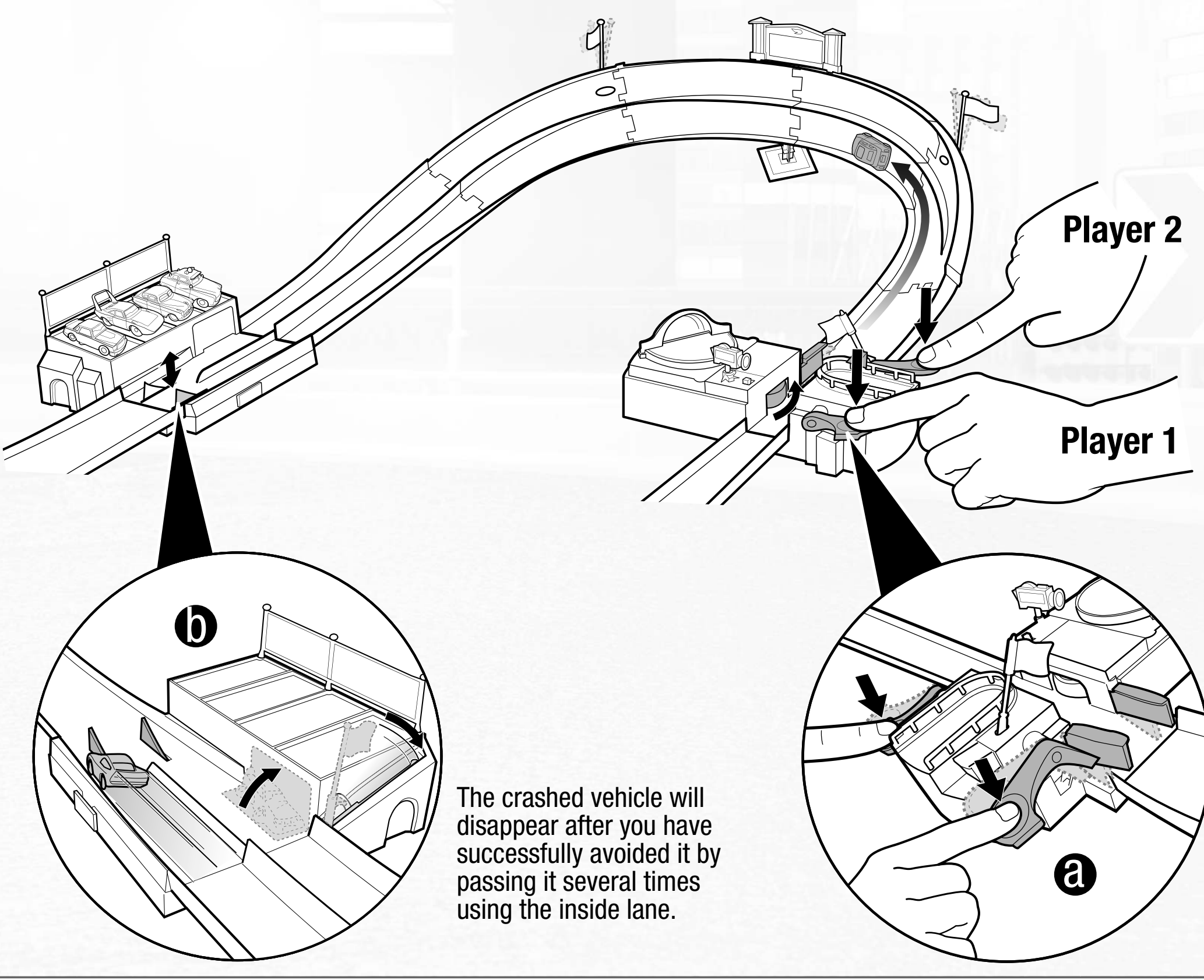
1

Move switch to ON position (A).
A hidden "crashed" car will appear on the track and the caution flag will go up (C) after your car has completed several laps around the track.



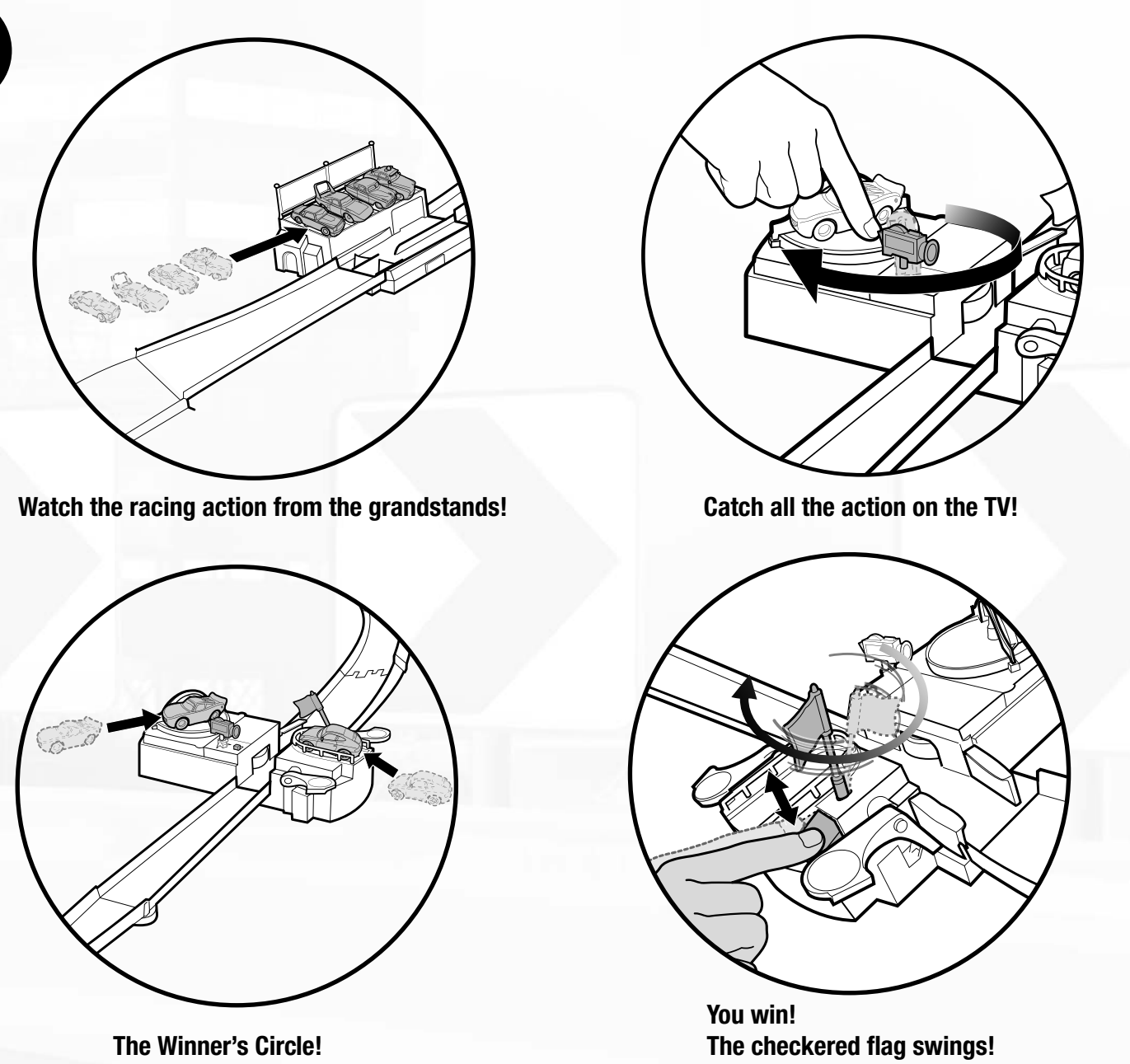
2

Two players can race against each other!
Use the lane change levers for high-speed passing and to race past your opponent!
Avoid hitting the crashed car by pressing down on either lever to divert your car onto the inside lane.



Avoid the crashed car or flip off the track!
If you do not press the levers you will hit the crashed car and your car will flip over and lose the race!

3



Watch the racing action from the grandstands!

Catch all the action on the TV!

The Winner's Circle!

You win!
The checkered flag swings!

The following vehicles are recommended for use on this set:

