

Fisher-Price®

iXL
LEARNING SYSTEM



www.fisher-price.com

Consumer Information

- Please keep this owner's manual for future reference, as it contains important information.
- Adult setup is required to install this software title on your computer and then transfer to your **iXL™** Handheld Device (sold separately).
- The CD ROM is not a toy.
- For proper use of this software, we recommend your computer meet minimum system requirements, including an internet connection.

PC Minimum System Requirements

Operating SystemMicrosoft® Windows XP, Windows Vista™
or Windows 7

Processor.....1.2GHz

Memory256MB RAM

Hard Drive.....150MB available

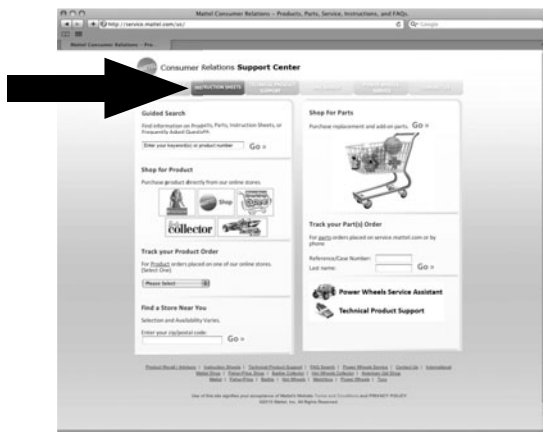
CD or DVD drive

USB Port.....1.1

Note: Internet connection is required.

Content and Use Instructions

If you would like instructions for use, please go to:
www.service.mattel.com



- Click on the Instruction Sheet tab at the top of the page



- Type the product number of this software title, **W0435**, in the search box and click **GO**.
- Then, click on the instruction sheet link.

Software Installation

- **Before installing this software title:**

- **iXL™** Computer Software must be installed before installing this software title. If you have not done this, you will be prompted to install **iXL™** Computer Software (included on this CD-ROM). Once installation is complete, re-insert the software title CD-ROM, or go to your computer's Start Menu, select 'Run,' and type D:\setup.exe.
- Make sure your **iXL™** (sold separately) is **not** connected to your computer.
- Close **iXL™** Computer Software (that came with **iXL™**).
- If you have multiple logons on your computer, be sure the logon you are using has Administrator privileges. You will need Administrator privileges to install this software.
- Insert the CD into the CD-ROM or DVD drive of your computer.
- The software installer launches automatically. Follow the on-screen instructions to complete installation.

Note: You need to install all components to use this software.

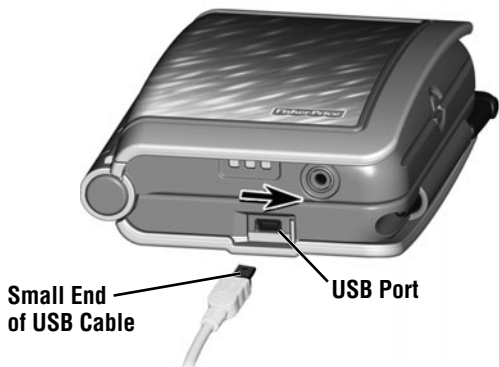
- If installation of the software does not launch automatically, go to the "Start" menu, click on "Run" and type "D:\setup".

Uninstall Software

- Click on the following items (in order):
 - "Start" menu on your computer taskbar
 - "Programs"
 - "iXL™"
 - "Titles"
 - "Cars 2"
 - "Uninstall"

Connecting iXL™ Handheld Device

- **After installing this software title**, connect iXL™ (sold separately) to your computer to transfer and manage content.

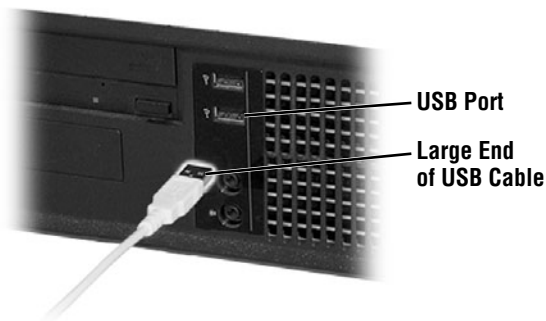



- Slide the USB door open on iXL™ to access the USB port.
- Insert the smaller end of the USB cable into the USB port on iXL™.



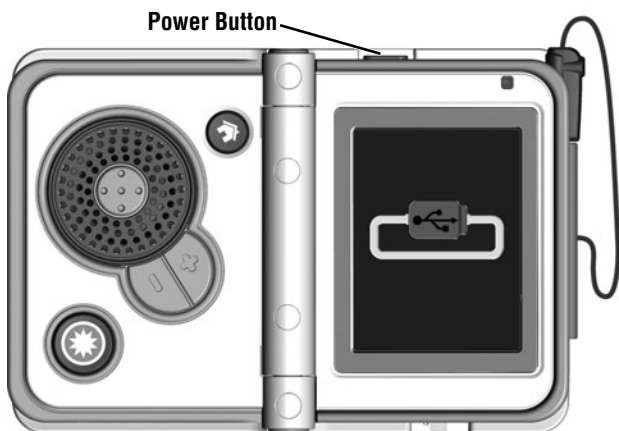
WARNING


To prevent strangulation, keep computer cables away from children.



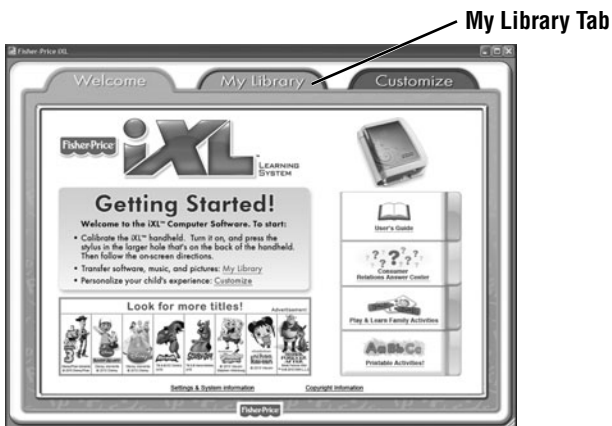
- Insert the larger end of the USB cable into the USB port  on your computer.


Connecting iXL™ Handheld Device



- Open iXL™ and press the power button .
- If iXL™ is properly connected to your computer, you will see the USB connect symbol on the screen.

iXL™ Computer Software

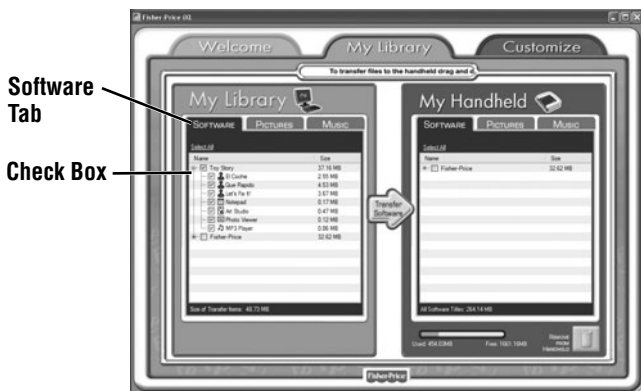


- Double-click on the  on your computer desktop to launch **iXL™** Computer Software that was included with the **iXL™** Handheld Device (sold separately).
- From the Welcome page, click on the **My Library** tab to transfer the software title to **iXL™**.

Note: **iXL™** must be connected to your computer, turned on and open.

My Library Software Titles

Note: The software titles that appear on the **My Library** and **My Handheld** sides of the screen in **iXL™** Computer Software will vary depending on the software titles you purchased and installed (additional software titles sold separately).



- On the **My Library** side of the screen, click on the **Software** tab to transfer this software title to **iXL™**.
- Click on the check box (on the My Library side of the screen) next to this software title.

Hint: If you use the check box next to the main title, you will transfer everything included in this software title. To customize the content on **iXL™**, click only on selected activities.


My Library Software Titles

Transfer Software Button



- Click on the **Transfer Software** button to move this software title (or selected activities from this software title) onto the **My Handheld** side of the screen and onto **iXL™**.
- After transferring this software title, disconnect **iXL™** from your computer.



- To remove an **iXL™** software title (or activity) from **iXL™**, first click on the check box next to the software title (or activity) on the **My Handheld** side of the screen. Then, click on .

Hint: If you'd like to check how much memory is available on **iXL™**, look at the memory gauge on the **My Handheld** side of the screen.

Consumer Information

NOTICE ABOUT EPILEPSY AND SEIZURES

PLEASE READ THIS NOTICE BEFORE YOU OR YOUR CHILD USE ANY VIDEO/COMPUTER GAME.

A very small portion of the population has a condition, which cause a momentary loss of consciousness when viewing certain kinds of flashing lights or patterns that are commonly present in our daily environment. This condition may cause seizures while watching some kinds of television pictures or playing certain video/ computer games. Players who have not had any previous seizures may nonetheless have an undetected epileptic condition.

If you or anyone in your family has experienced symptoms linked to an epileptic condition (e.g. a seizure or loss of awareness), consult your physician before playing video/computer games.

We recommend that parents observe their children while they play video/ computer games. If you or your child experience any of the following symptoms such as dizziness, altered vision, eye or muscle twitching, involuntary movements, loss of awareness, disorientation or convulsions, **DISCONTINUE USE IMMEDIATELY** and consult your physician.

Additionally, please follow these precautions whenever playing a video/ computer game:

- Do not play if you are tired or need sleep.
- Always play in a well lit room.
- Be sure to take a 10-15 minute break every hour while playing.

Consumer Information



CONSUMER ASSISTANCE

1-888-892-6123 (US & Canada)

1300 135 312 (Australia)



service.fisher-price.com

Fisher-Price, Inc., 636 Girard Avenue, East Aurora, NY 14052.

Hearing-impaired consumers: 1-800-382-7470.

Outside the United States:

Canada: Mattel Canada Inc., 6155 Freemont Blvd.,
Mississauga, Ontario L5R 3W2; www.service.mattel.com.

Great Britain: Mattel UK Ltd, Vanwall Business Park,
Maidenhead SL6 4UB. Helpline: 01628 500303.
www.service.mattel.com/uk

Mattel Europa, B.V., Gondel 1, 1186 MJ Amstelveen, Nederland.

Australia: Mattel Australia Pty. Ltd., 658 Church Street,
Locked Bag #870, Richmond, Victoria 3121 Australia.

New Zealand: 16-18 William Pickering Drive,
Albany 1331, Auckland.

Adobe, the Adobe logo, and Flash are either registered trademarks or trademarks of Adobe Systems Incorporated in the United States and/or other countries.

Apple is a trademark of Apple Inc., registered in the U.S. and other countries.

MPEG Layer-3 audio decoding technology licensed from Fraunhofer IIS and Thomson.

Windows is a registered trademark of Microsoft Corporation in the United States and other countries.

Windows Vista, Windows Media Player are either a registered trademark or trademark of Microsoft Corporation in the United States and/or other countries.

Cars 2 © 2011 Disney/Pixar, not including underlying third party rights;
Pacer™; © Volkswagen; Gremlin™; FIAT™; Jeep®.

Fisher Price, Inc., a subsidiary of Mattel, Inc., East Aurora, NY 14052 U.S.A.
©2011 Mattel, Inc. All Rights Reserved.

® and ™ designate U.S. trademarks of Mattel, Inc., unless otherwise indicated.

PRINTED IN CHINA

W0435pr-0920