



GORILLA TAKEDOWN™

INSTRUCTIONS

Keep these instructions for future reference as they contain important information.

CONTENTS

- Set also includes:
 1. DRIFT RALLY SPINOUT™
 2. DAREDEVIL CURVE™

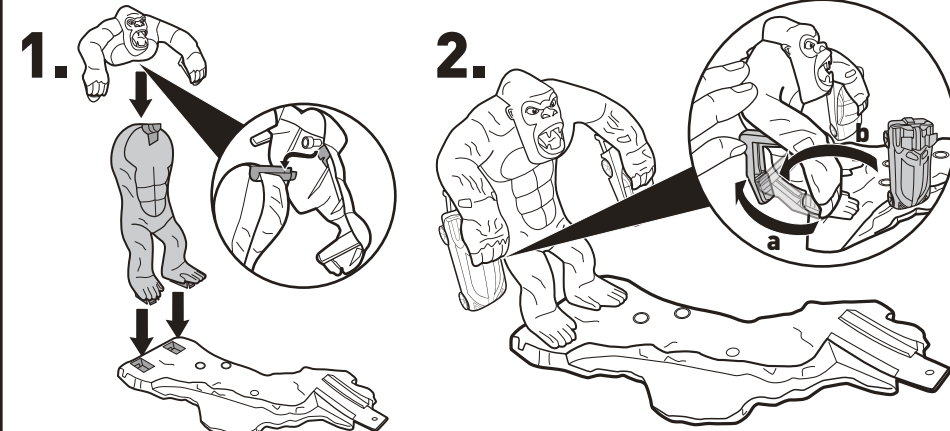
4+



W1479-0920

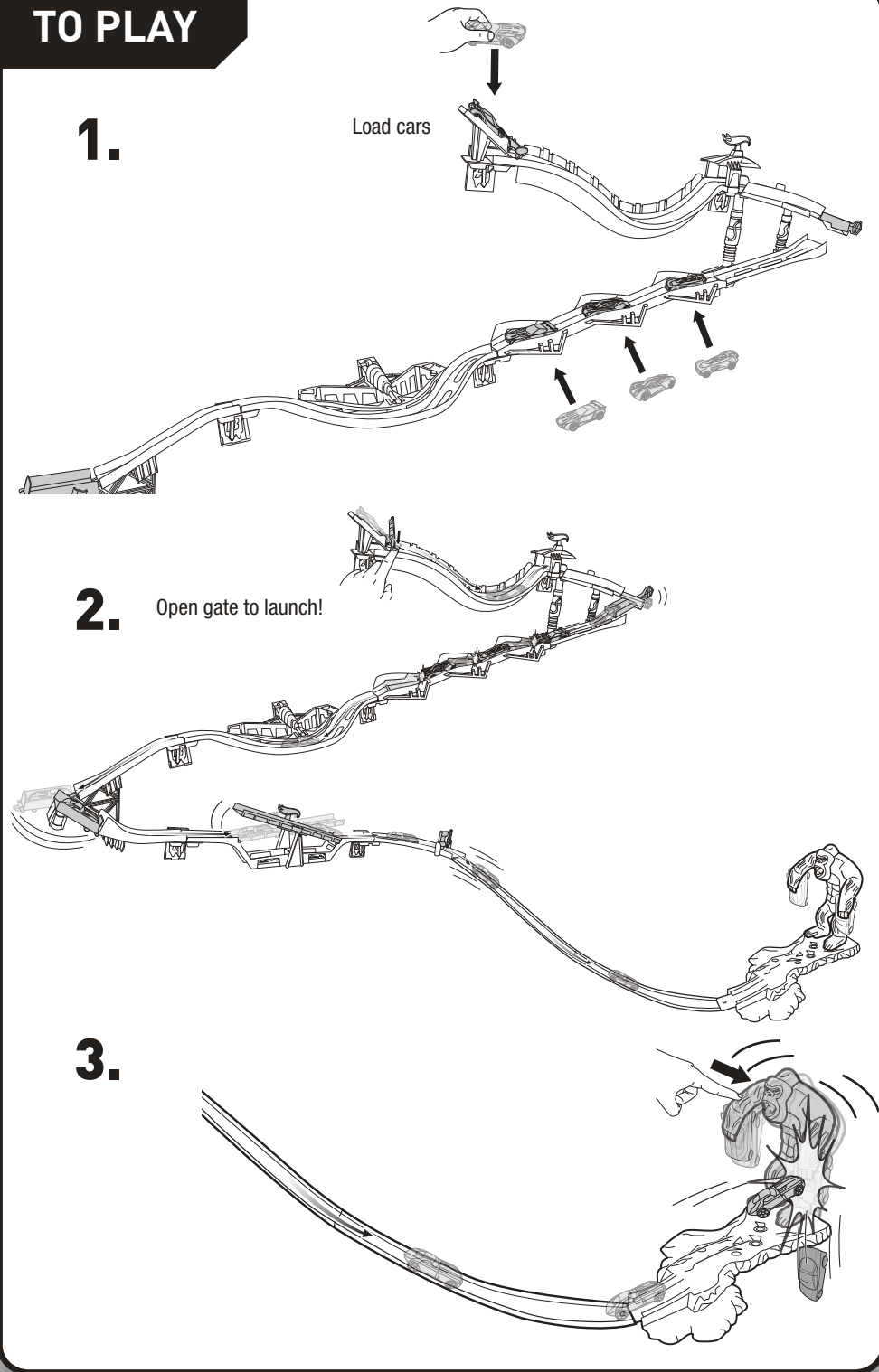
NOTE: For contents of DRIFT RALLY SPINOUT™ and DAREDEVIL CURVE™, refer to the respective Hanging Template.

ASSEMBLY



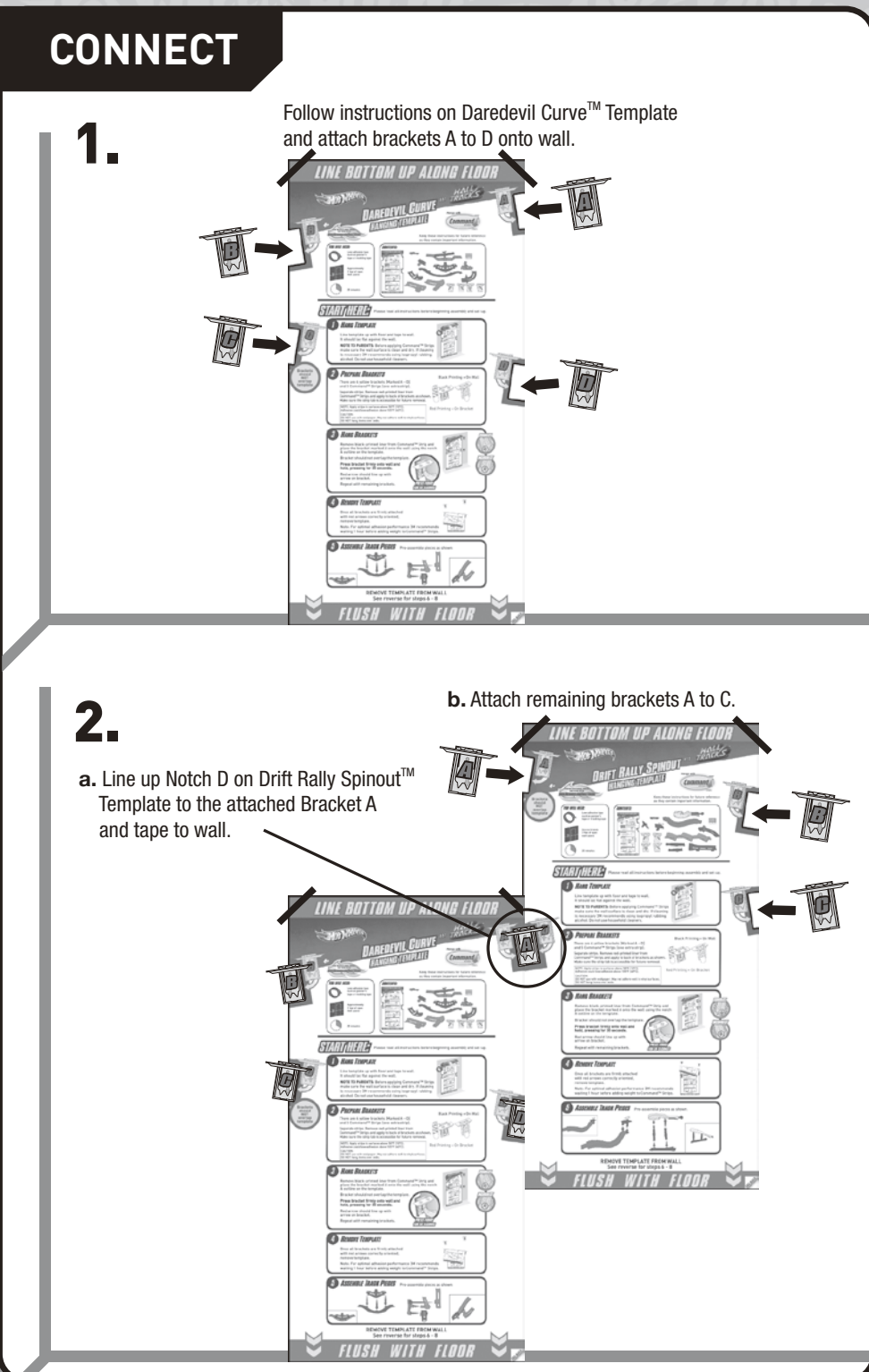
© 2011 Mattel, Inc. All Rights Reserved. Mattel, Inc., 636 Girard Avenue, East Aurora, NY 14052, U.S.A. Consumer Relations 1-800-524-8697. Mattel U.K. Ltd., Vanwall Business Park, Maidenhead SL6 4UB. Helpline 01628 500303. Mattel Australia Pty., Ltd., Richmond, Victoria, 3121. Consumer Advisory Service - 1300 135 312. Mattel East Asia Ltd., Room 1106, South Tower, World Finance Centre, Harbour City, Tsimshatsui, HK, China. Diimport & Diedarkan Oleh: Mattel SEA Ptd Ltd.(993532-P) Lot 13.5, 13th Floor, Menara Lien Hoe, Persiaran Tropicana Golf Country Resort, 47410 PJ. Tel:03-78803817, Fax:03-78803867. service.mattel.com

TO PLAY

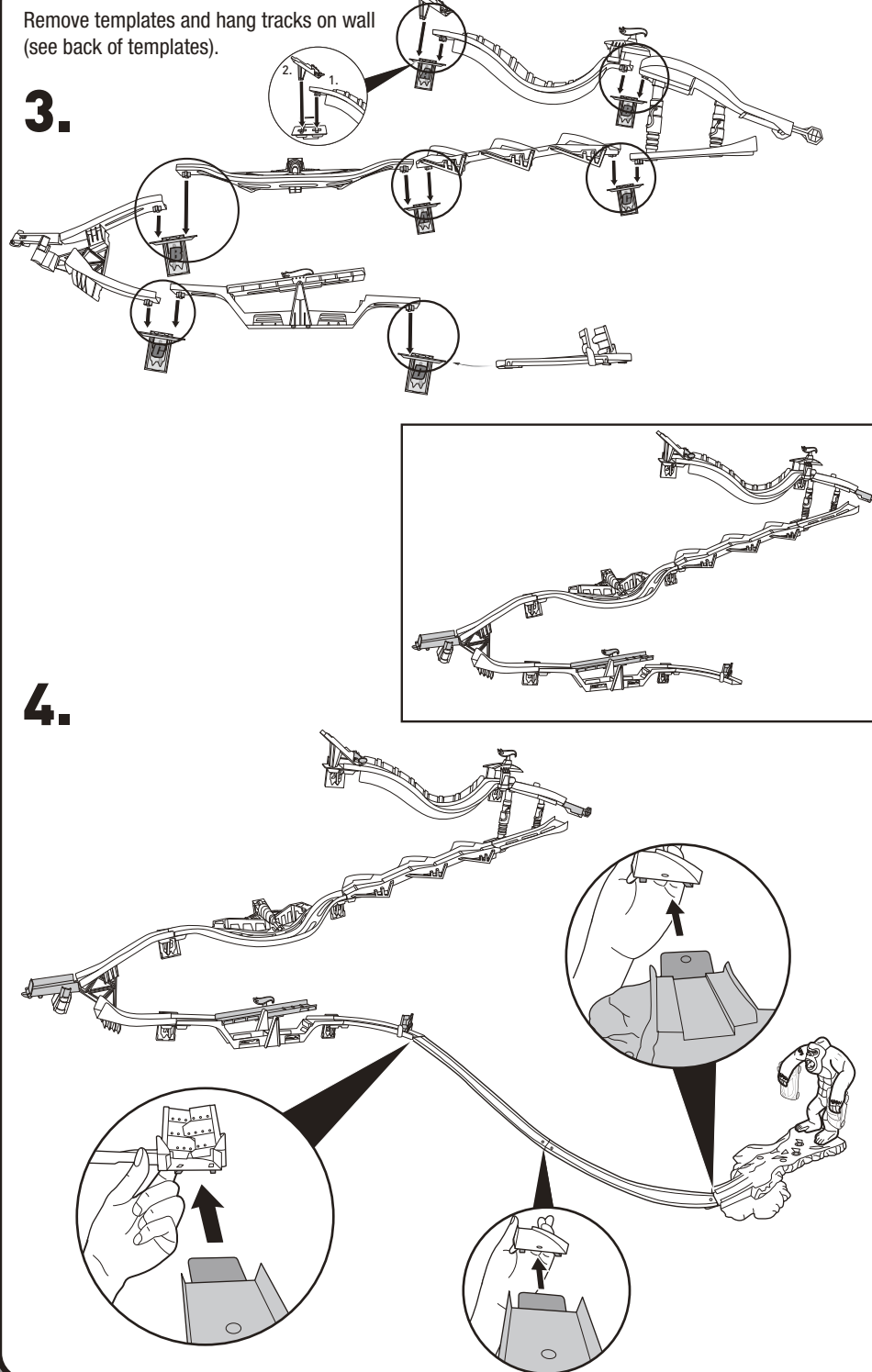


FRONT

CONNECT



BACK



INSTRUCTION SHEET SPECIFICATIONS

Toy: HW GORILLA TAKEDOWN SET
 Toy No.: W1479
 Part No.: 0920
 Trim Size: 11"W x 8.5" H
 Folded Size: 5.5" W x 8.5" H
 Type of Fold: Single
 # colors: One
 Colors: Black
 Paper Stock: White Offset
 Paper Weight: 70 lb.
 EDM No.:
 Date: APR. 14, 2011

2 PANEL Folding Dummy

