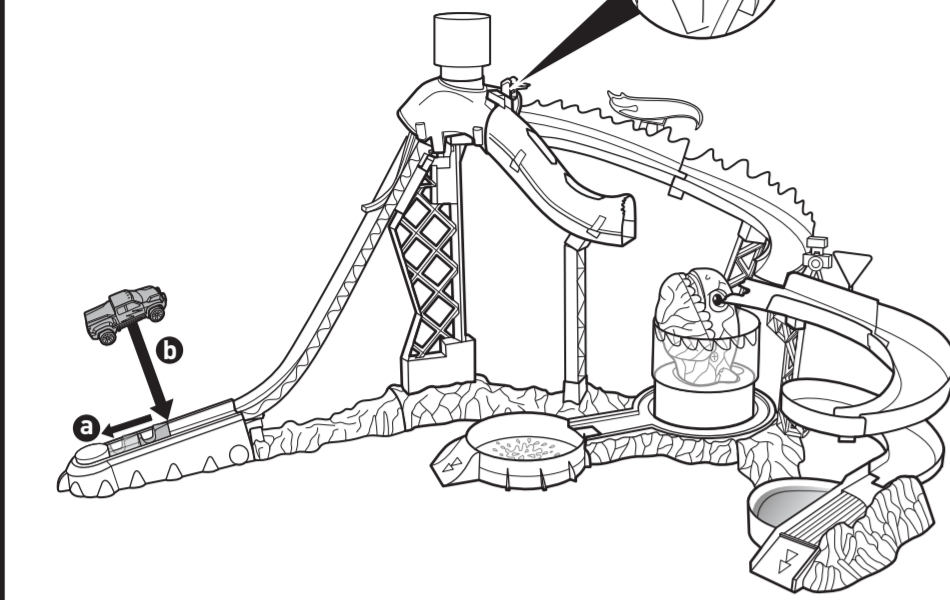
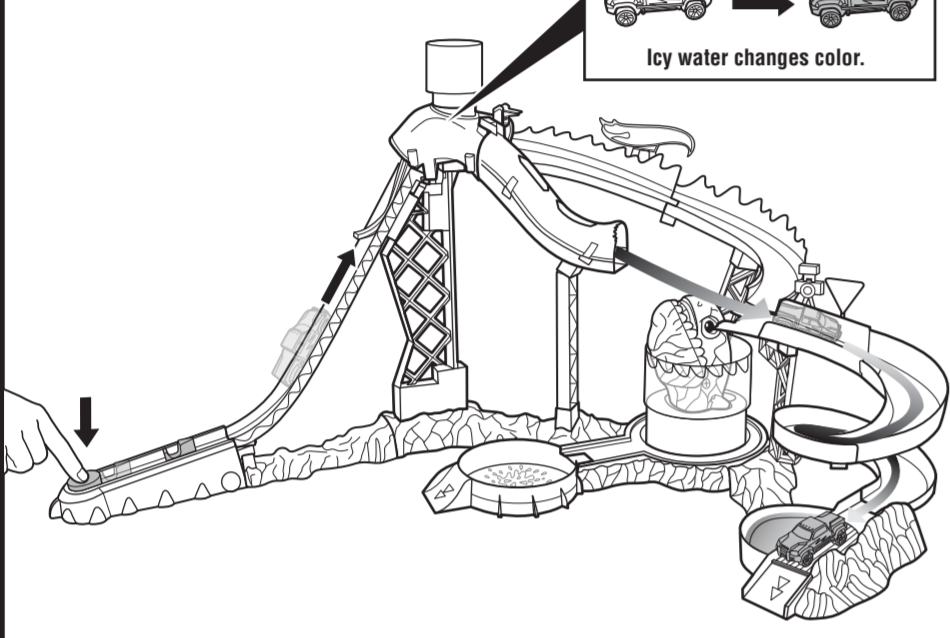


TO PLAY

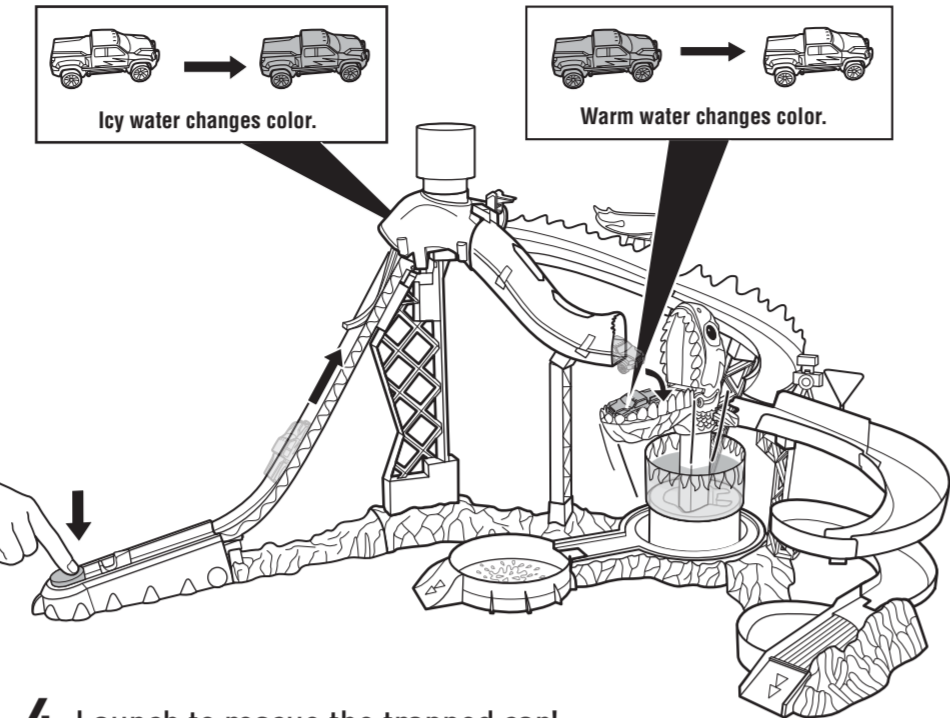
1. Set launcher and load car.



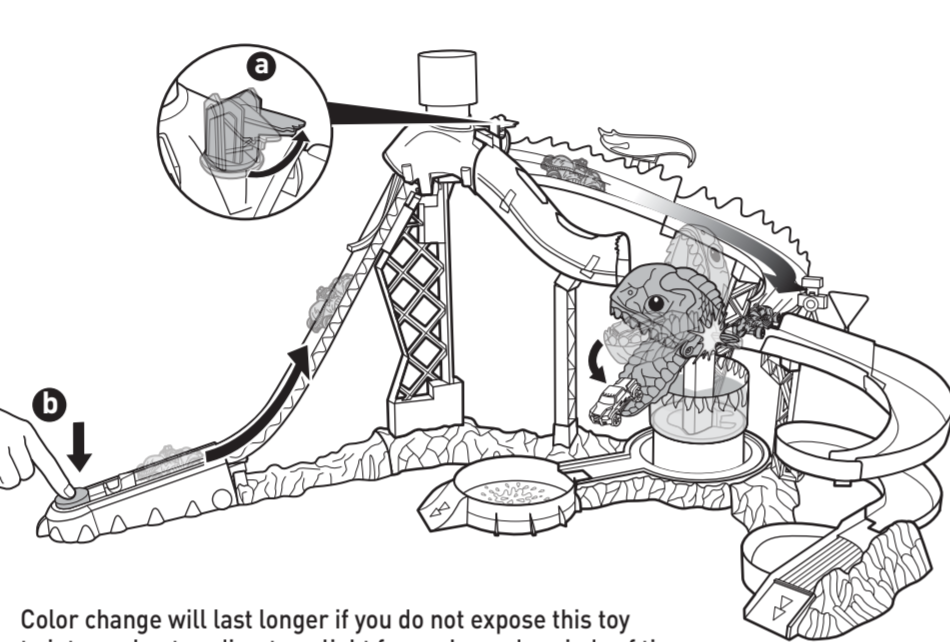
2. Launch to ride the water slide!



3. Piranha Attack™!

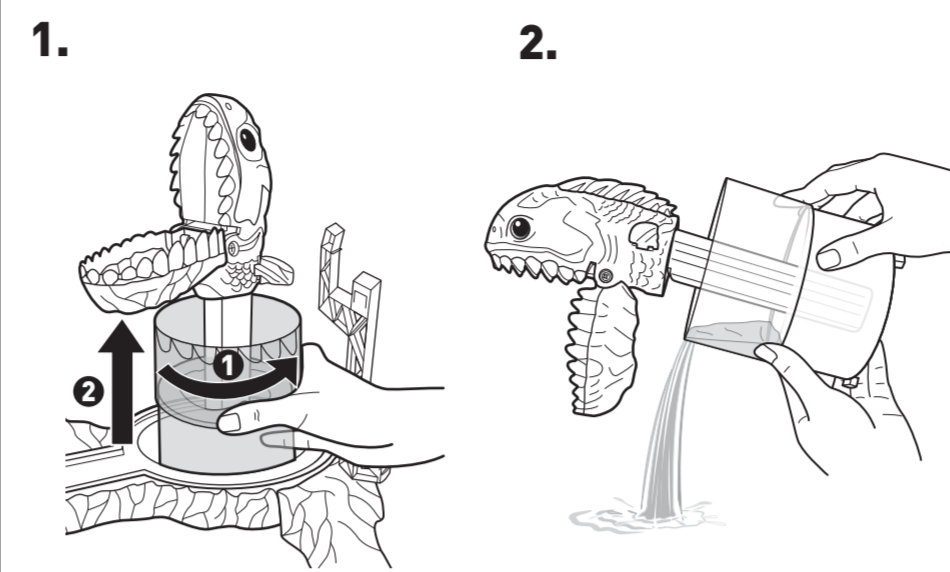


4. Launch to rescue the trapped car!

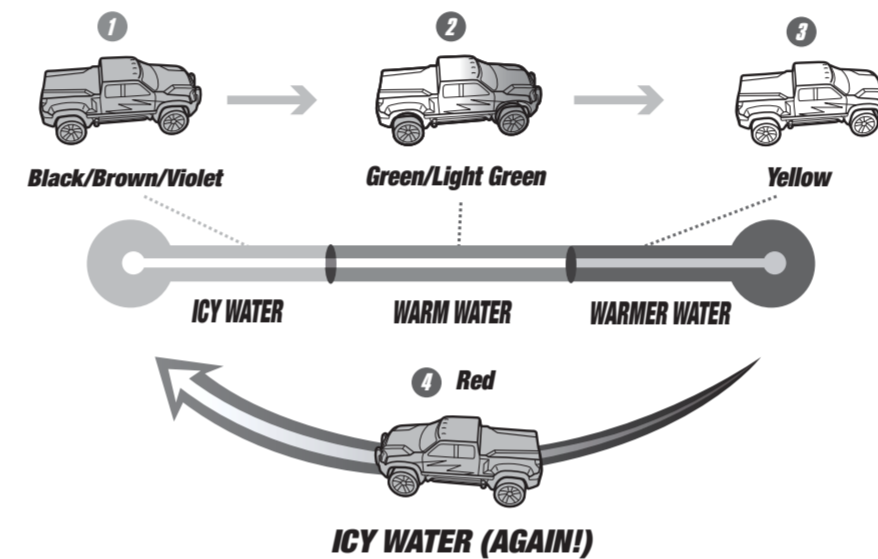


TO DRAIN

Drain, rinse, clean and dry all items thoroughly before storing. Do not immerse set in water.



FEATURING:
MULTI-COLOR CHANGE!

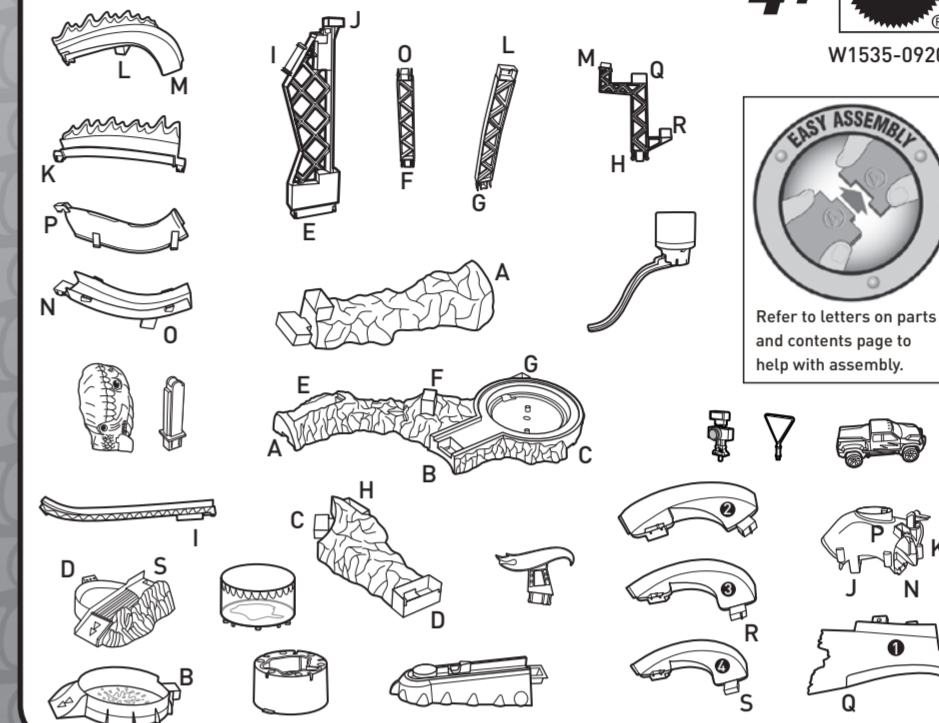


PIRANHA ATTACK™

INSTRUCTIONS

Please keep these instructions for future reference as they contain important information.

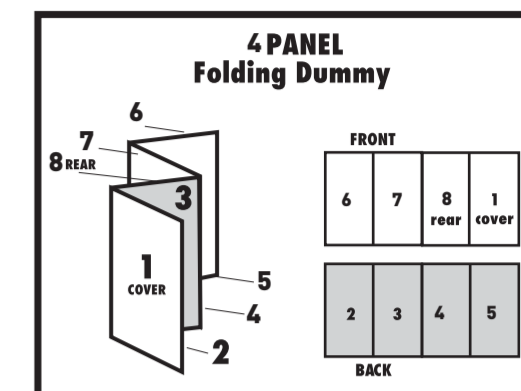
CONTENTS



© 2011 Mattel, Inc. All Rights Reserved. Mattel, Inc., 636 Girard Avenue, East Aurora, NY 14052, U.S.A. Consumer Relations 1-800-524-8697. • Mattel U.K. Ltd., Vanwall Business Park, Maidenhead SL6 4UB. Helpline 01628 500303. • Mattel Australia Pty., Ltd., Richmond, Victoria, 3121. Consumer Advisory Service: 1300 135 312. • Mattel East Asia Ltd., Room 1106, South Tower, World Finance Centre, Harbour City, Tsimshatsui, HK China. • Distributor & Dealer: Oleyh, Mattel SEA Ptd Ltd (983532-P) Lot 13.5, 13th Floor, Menara Lien Hoe, Persiaran Tropicana Golf Country Resort, 47410 PJ. Tel:03-78803817, Fax:03-78803867. • service.mattel.com

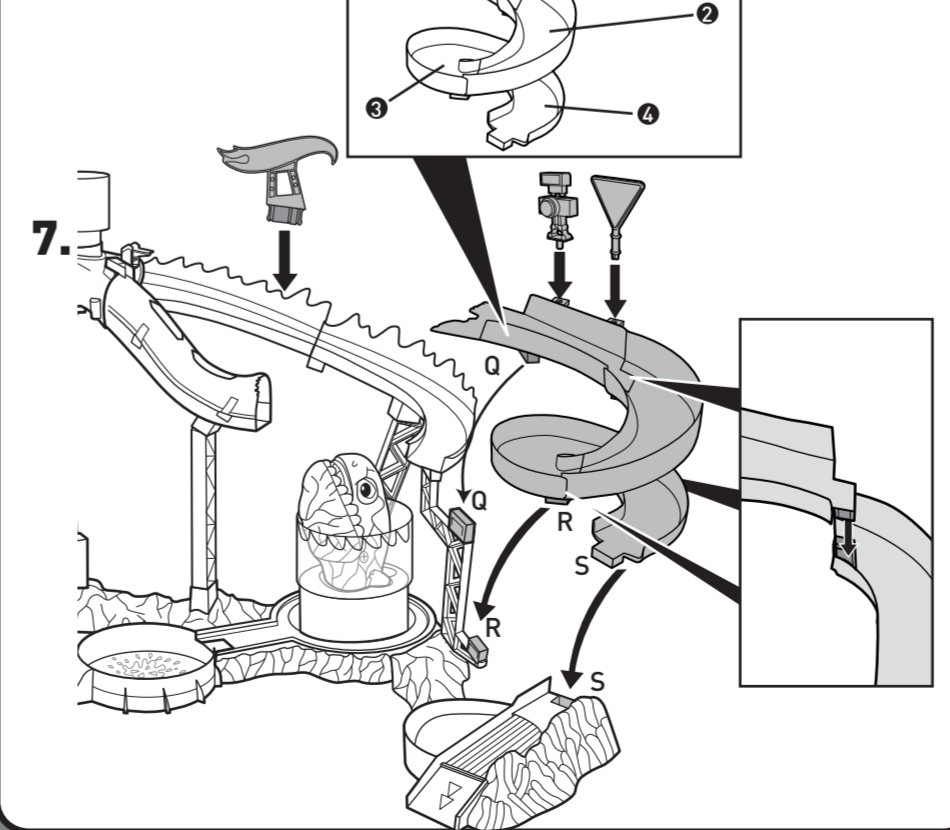
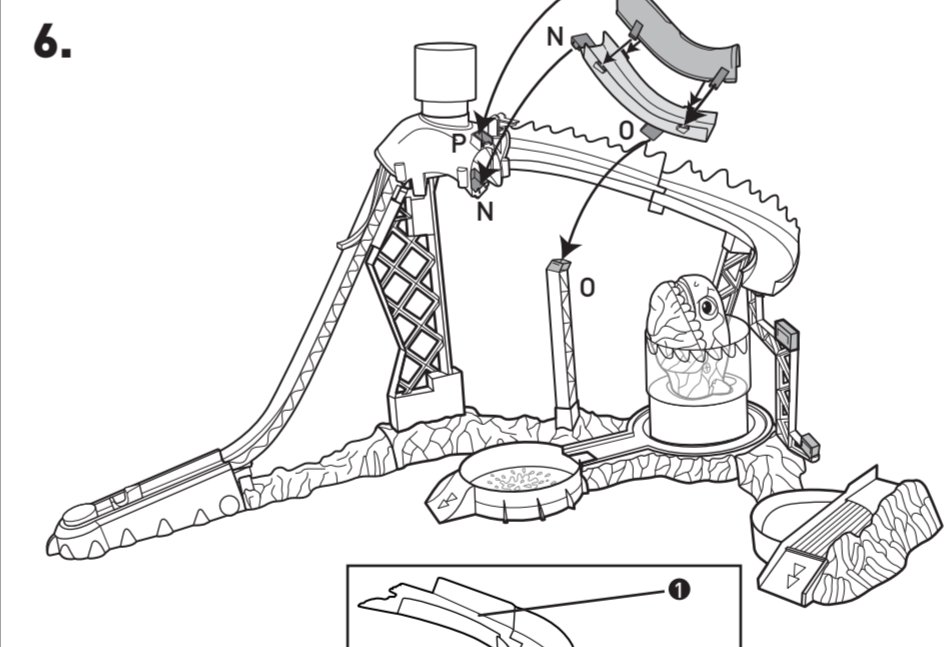
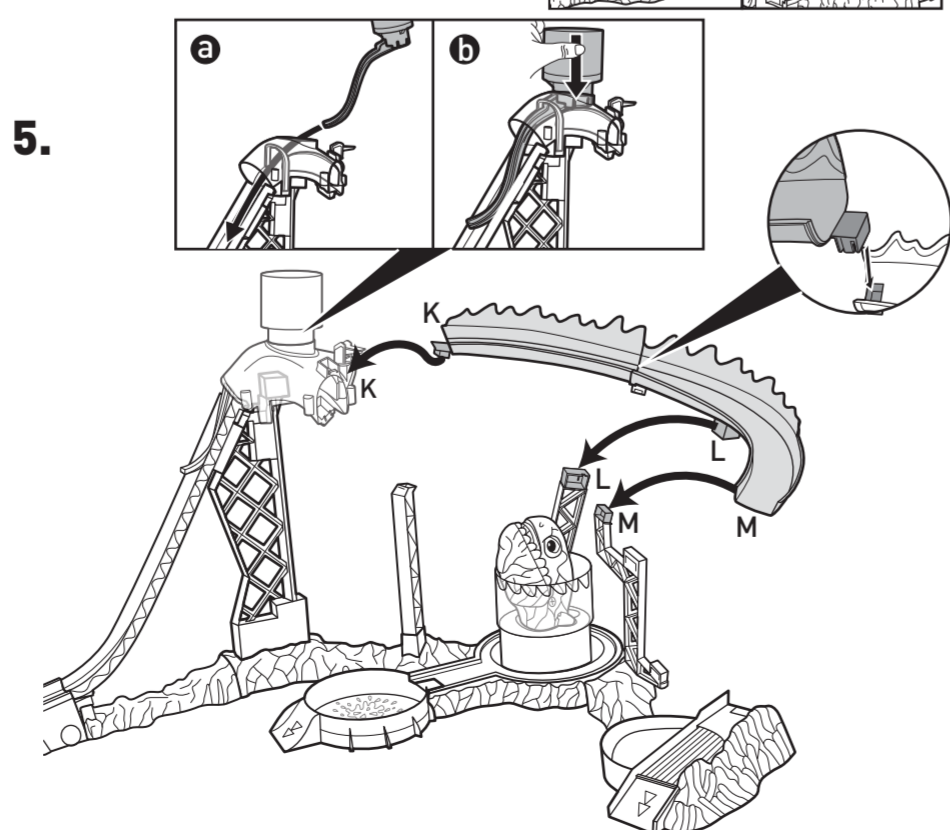
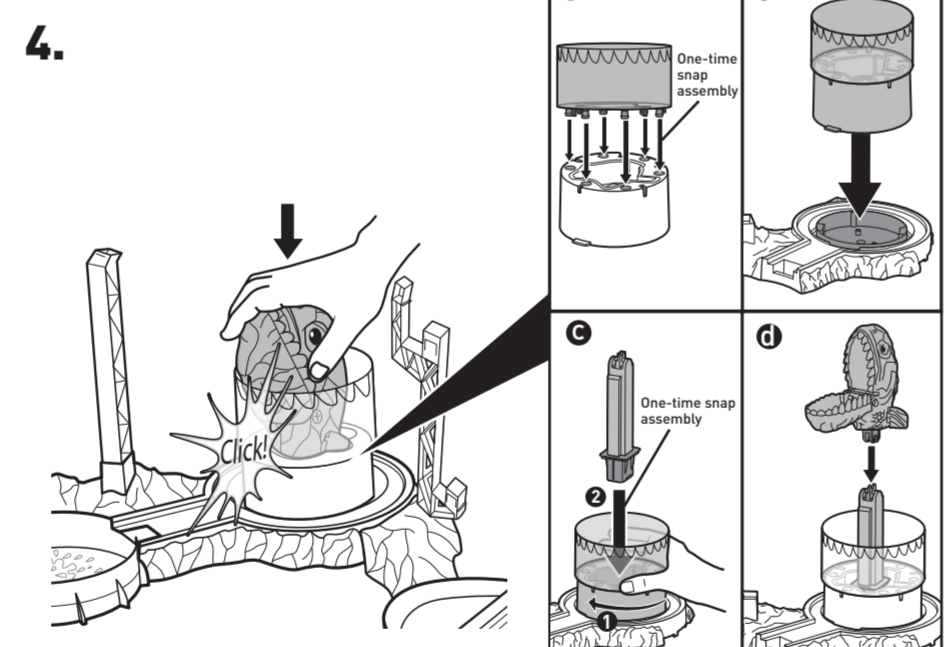
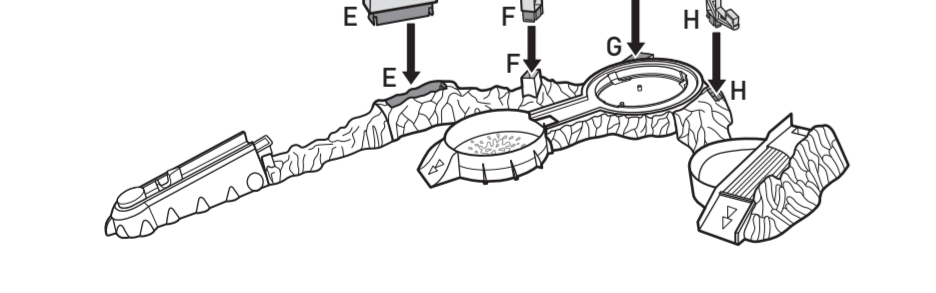
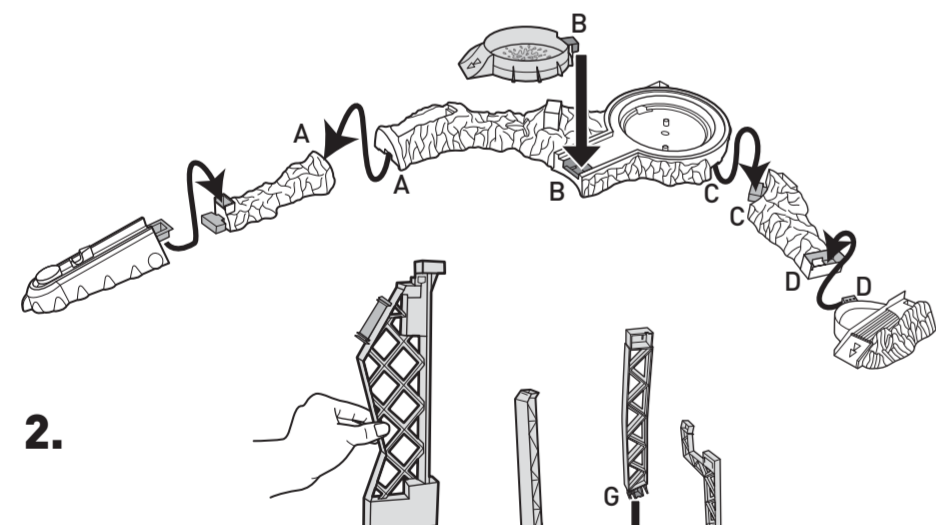
INSTRUCTION SHEET SPECIFICATIONS

Toy No.:	W1535
Part No.:	0920
Trim Size:	22"W x 8.5"H
Folded Size:	5.5"W x 8.5"H
Type of Fold:	Single
# colors:	One
Colors:	Black
Paper Stock:	White Offset
Paper Weight:	70 lb
EDM No.:	



ASSEMBLY

1. Refer to letters on parts and contents page to help with assembly.



GET READY TO PLAY

Fill water to top of container for best performance. Overfilling of reservoir may cause leakage. To avoid burns do not use water that is too hot, above 120°F(48°C). Water toys sometimes get messy. Protect play surfaces before use.

For best performance of color change feature, please use icy water under 50°F/10°C.

