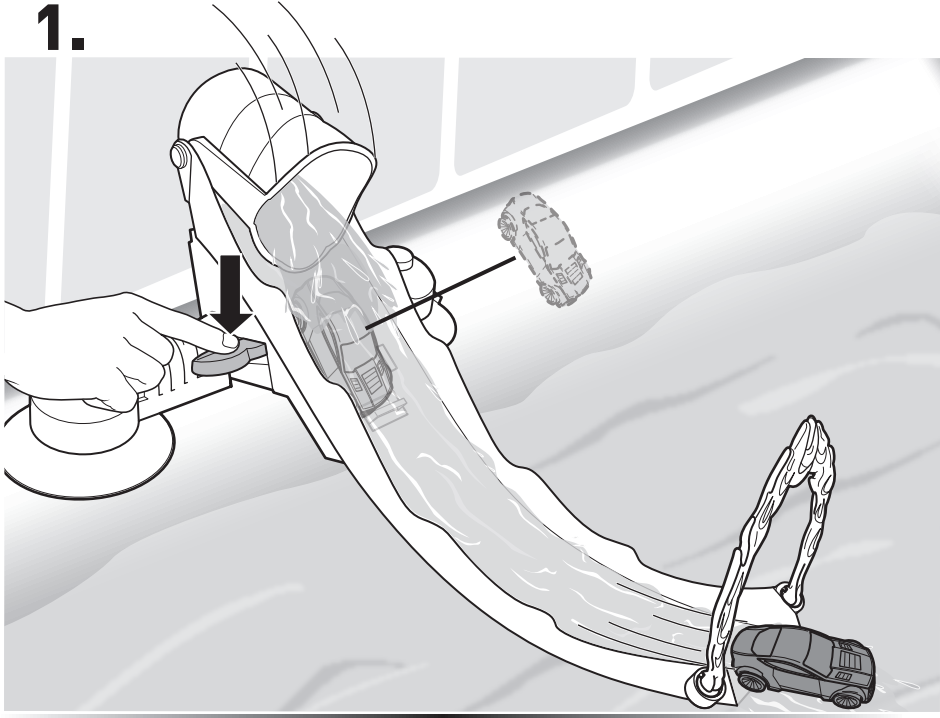
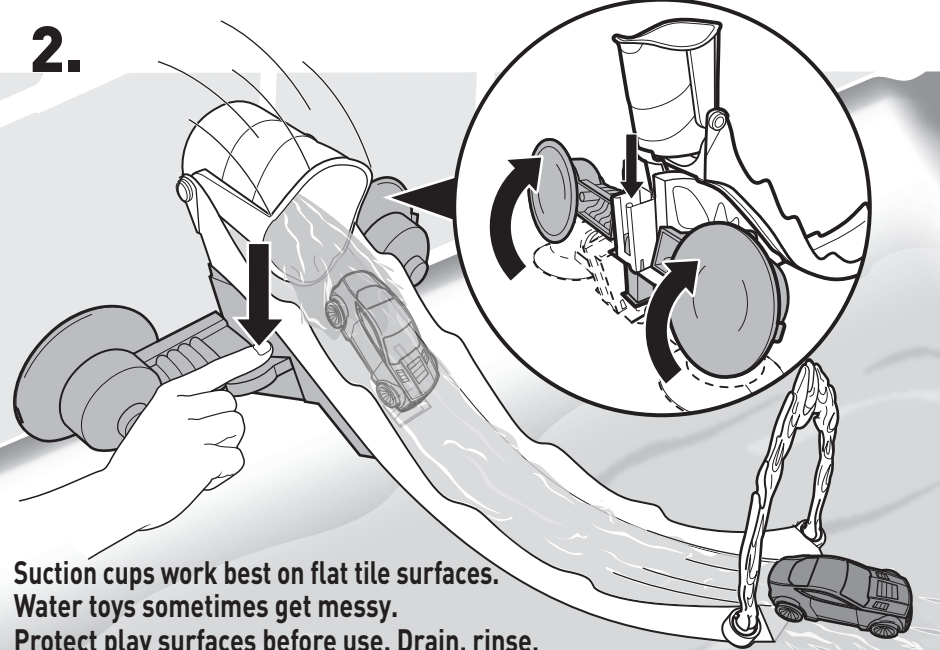


TO PLAY

1.



2.



Suction cups work best on flat tile surfaces.
Water toys sometimes get messy.
Protect play surfaces before use. Drain, rinse,
clean and dry all items thoroughly before storing.

HOT WHEELS

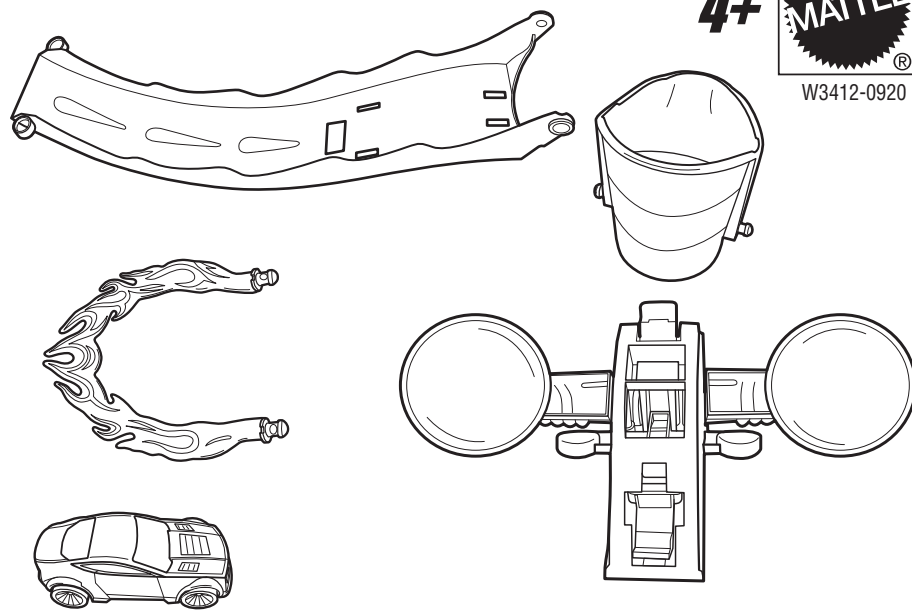
FUN FOR THE TUB!

SPLASH TRACK™

INSTRUCTIONS

Please keep these instructions for future reference as they contain important information.

CONTENTS



©2011 Mattel, Inc. All Rights Reserved.

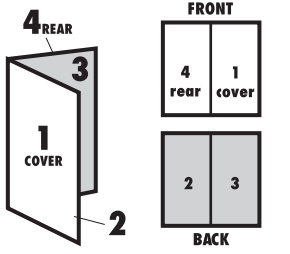
Mattel, Inc., 636 Girard Avenue, East Aurora, NY 14052, U.S.A. Consumer Relations
1-800-524-8697. Mattel U.K. Ltd., Vanwall Business Park, Maidenhead SL6 4UB. Helpline 01628
500303. Mattel Australia Pty., Ltd., Richmond, Victoria, 3121. Consumer Advisory Service -
1300 135 312. Mattel East Asia Ltd., Room 1106, South Tower, World Finance Centre, Harbour
City, Tsimshatsui, HK, China. Diimport & Diedarkan Oleh: Mattel SEA Ptd Ltd.(993532-P) Lot
13.5, 13th Floor, Menara Lien Hoe, Persiaran Tropicana Golf Country Resort, 47410 PJ.
Tel:03-78803817, Fax:03-78803867. service.mattel.com

INSTRUCTION SHEET SPECIFICATIONS

Toy: W3412 HW SPLASH TRACK
Toy No.: W3412
Part No.: 0920
Trim Size: 11" W x 8.5" H
Folded Size: 5.5" W x 8.5" H
Type of Fold: Single
colors: One
Colors: Black
Paper Stock: White Offset
Paper Weight: 70 lb.
EDM No.:

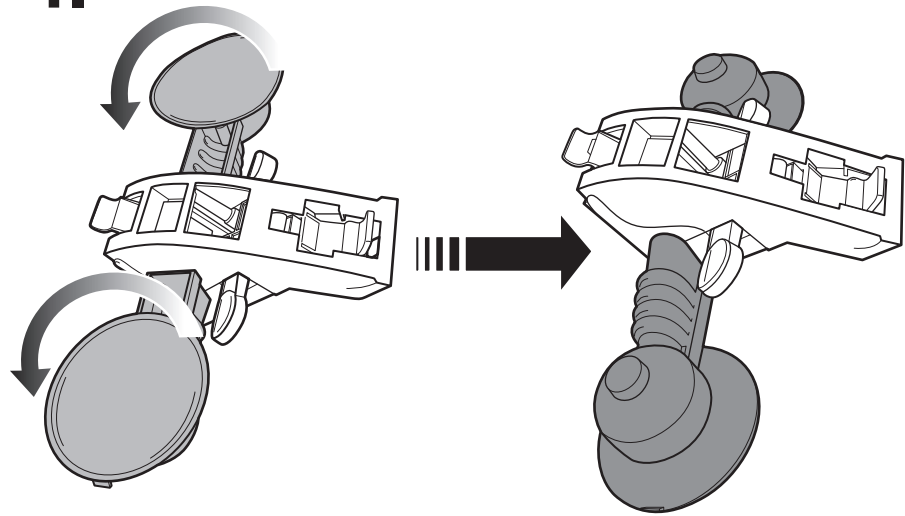


2 PANEL Folding Dummy

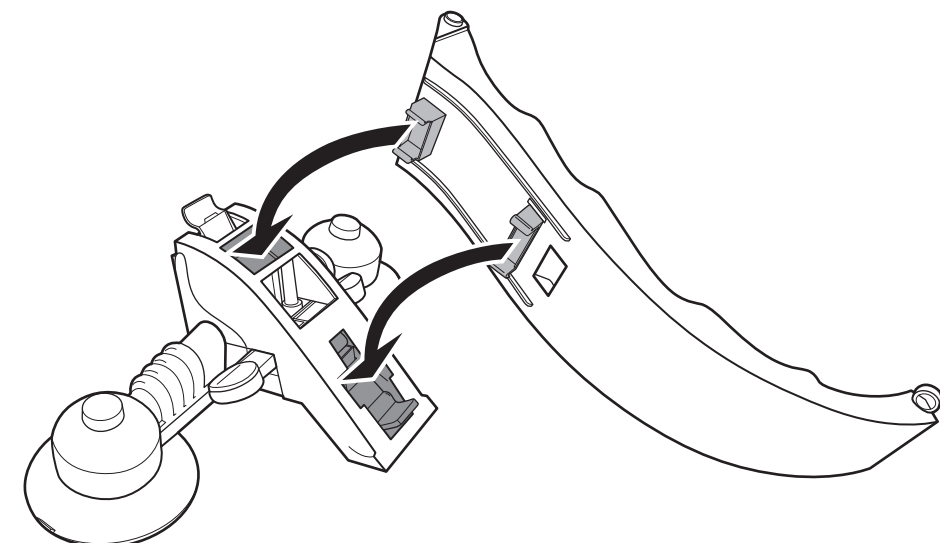


ASSEMBLY

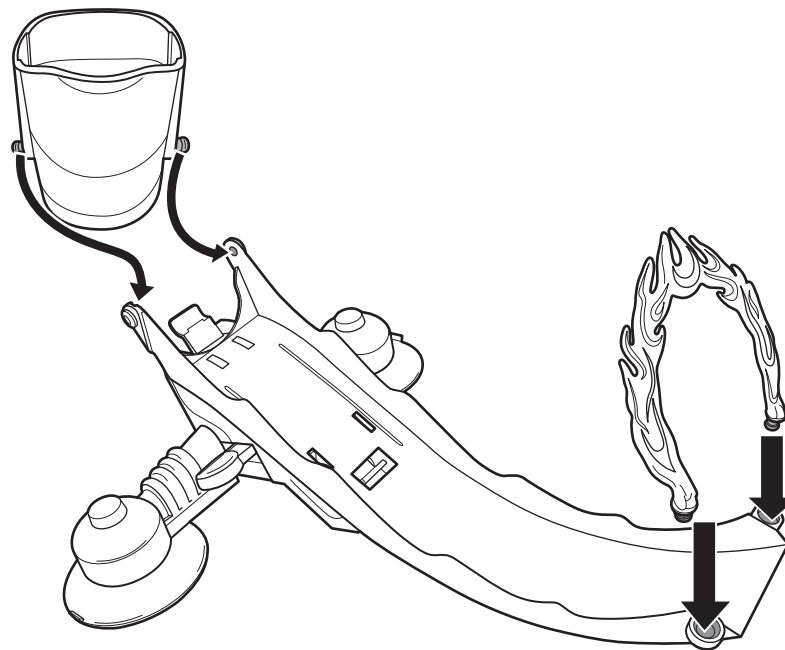
1.



2.



3.



GET READY TO PLAY

