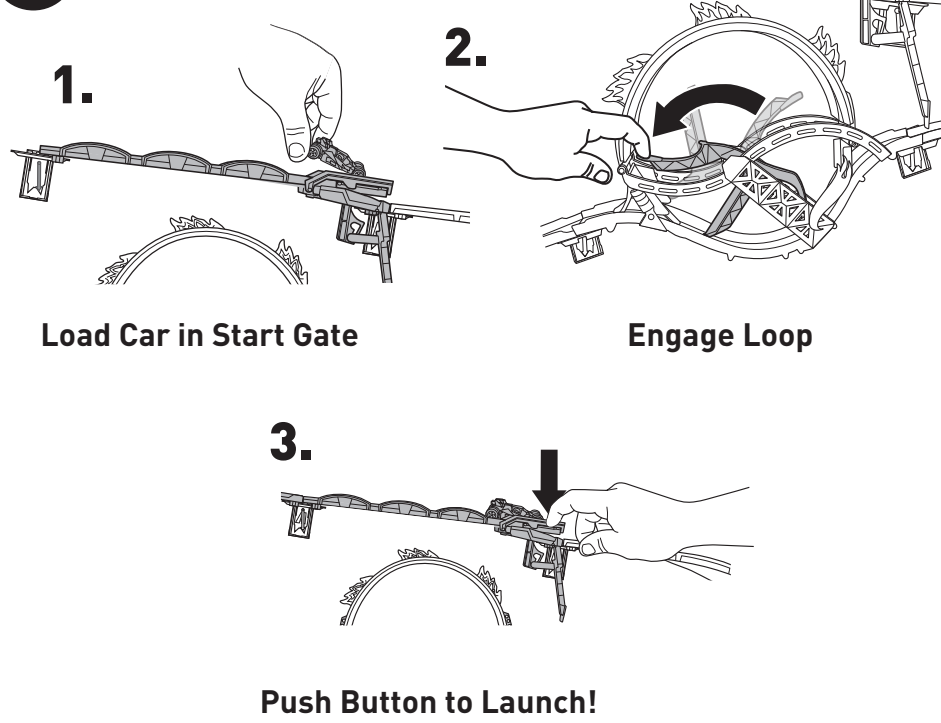


6 READY TO PLAY?



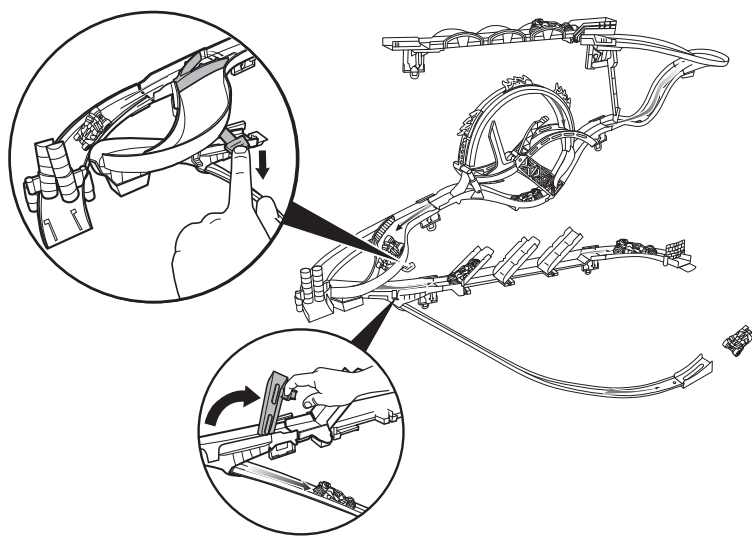
1. Load Car in Start Gate

2. Engage Loop

3. Push Button to Launch!

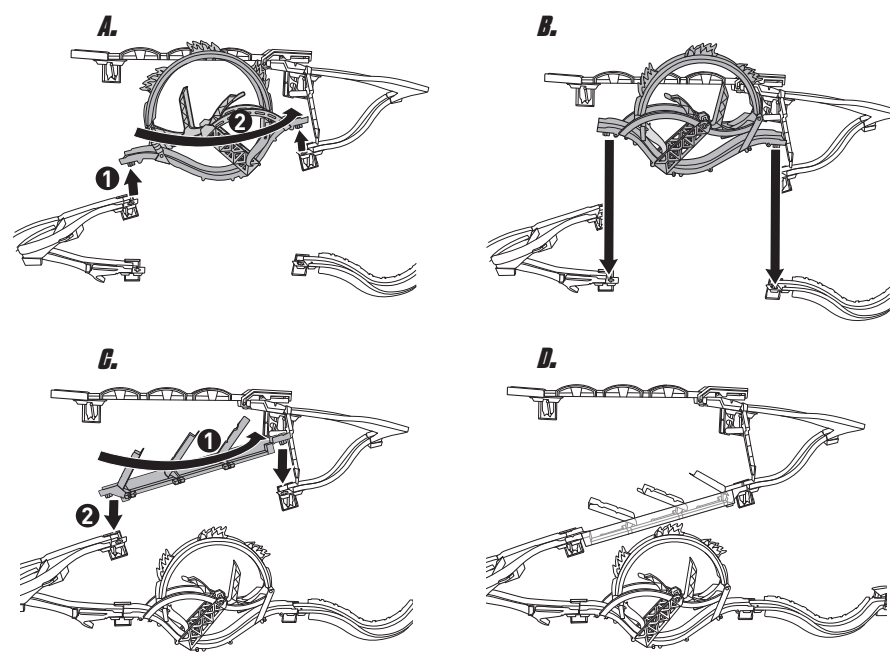
7 DIVERTERS & SWITCHES

Send your cars in different directions!

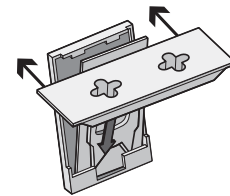


8 FURTHER PLAY

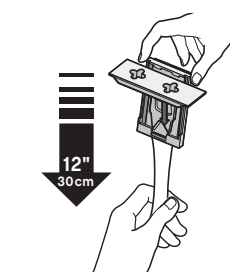
Stunts and accessories can be interchanged!



9 REATTACHING & REMOVAL



Mounting brackets are designed to break away from the set without causing surface damage. If mounting plate separates from bracket, snap bracket back into place.



To remove brackets from the wall entirely:

1. NEVER pull strip towards you.
2. Hold bracket gently to prevent it from snapping fingers. DO NOT press against wall.
3. Grab tab on Command™ Strip and SLOWLY STRETCH STRAIGHT DOWN ALONG WALL AT LEAST 12 INCHES until bracket and strip release.

Purchase medium Command™ Refill Strips to reapply to your wall.

HotWheels

Hangs with

Command BRAND STRIPS

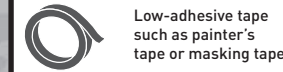
THE DARK KNIGHT RISES™ WALL TRACKS

STARTER SET: BATMAN™ EDITION

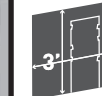
INSTRUCTIONS

Keep these instructions for future reference as they contain important information.

YOU WILL NEED:



Low-adhesive tape such as painter's tape or masking tape

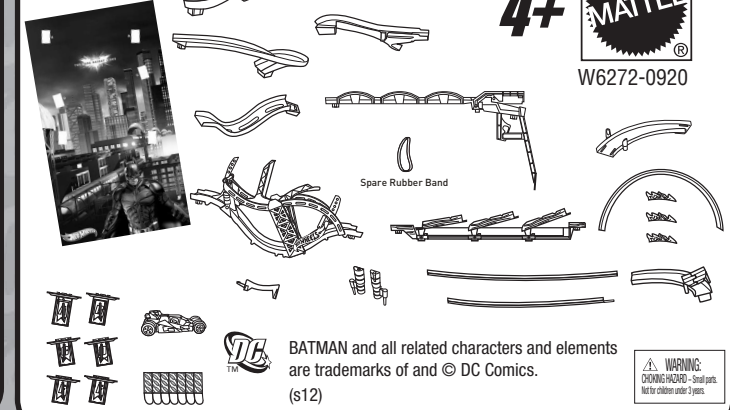


Approximately 3 feet of open wall space



20 minutes

CONTENTS:



4+

MATTEL W6272-0920

BATMAN and all related characters and elements are trademarks of and © DC Comics. (s12)



Command™ Strips are a product of 3M. For further information visit command.com

NOTE: Apply strips to surfaces above 50°F (10°C). Adhesive could lose adhesion above 105°F (40°C).

CAUTION: DO NOT use with wallpaper. May not adhere well to vinyl surfaces. DO NOT hang items over beds.

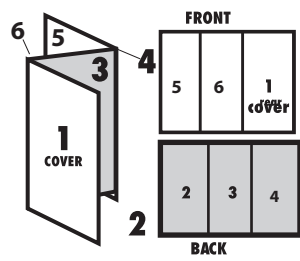
3M and Command are trademarks of 3M. © 3M 2011. All Rights Reserved.

©2011 Mattel. All Rights Reserved. Mattel, Inc., 636 Girard Avenue, East Aurora, NY 14052, U.S.A. Consumer Relations 1-800-524-8697. • Mattel U.K. Ltd., Vanwall Business Park, Maidenhead SL6 4UB. Helpline 01628 500303. • Mattel Australia Pty. Ltd., Richmond, Victoria. 3121. Consumer Advisory Service - 1300 135 312. • Mattel East Asia Ltd., Room 1106, South Tower, World Finance Centre, Harbour City, Tsingshatsui, HK, China. • Diimport & Diedarkan Oleh: Mattel SEA Ptd Ltd.(993532-P) Lot 13.5, 13th Floor, Menara Lien Hoe, Persiaran Tropicana Golf Country Resort, 47410 PJ. Tel:03-78803817, Fax:03-78803867. service.mattel.com

INSTRUCTION SHEET SPECIFICATIONS

Toy: HW CS CUSTOM COLOR ZONE
Toy No.: W6272
Part No.: 0920
Trim Size: 16.5" W x 8.5" H
Folded Size: 5.5" W x 8.5" H
Type of Fold: Single
colors: One
Colors: Black
Paper Stock: White Offset
Paper Weight: 70 lb.
EDM No.:

3 PANEL Folding Dummy



START HERE:

Please read all instructions before beginning assembly and set-up.

1 HANG POSTER

Line poster up with floor and tape to wall. It should lay flat against the wall.

NOTE TO PARENTS: Before applying Command™ Strips make sure the wall surface is clean and dry. If cleaning is necessary 3M recommends using isopropyl rubbing alcohol. Do not use household cleaners.

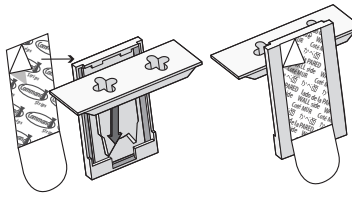


2 PREPARE BRACKETS

There are 6 yellow brackets [Marked A - F] and 7 Command™ Strips (1 extra strip).

Separate strips. Remove red-printed liner from Command™ Strips and apply to back of brackets as shown. Make sure the strip tab is accessible for future removal.

Black Printing = On Wall



Red Printing = On Bracket

NOTE: DO NOT PULL BRACKET OFF WALL without reading removal instructions in step 9.

NOTE: Apply strips to surfaces above 50°F (10°C). Adhesive could lose adhesion above 105°F (40°C).

CAUTION: DO NOT use with wallpaper. May not adhere well to vinyl surfaces. DO NOT hang items over beds.

3 HANG BRACKETS

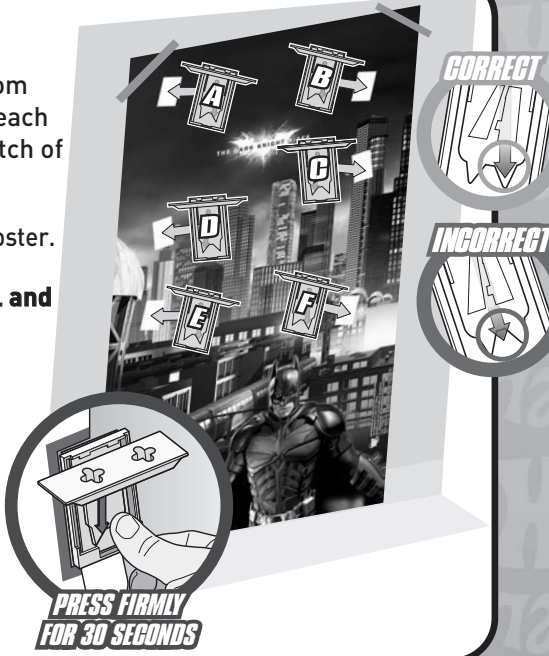
Remove black-printed liner from Command™ Strips and attach each bracket into the designated notch of the poster as shown.

Bracket should not overlap the poster.

Press bracket firmly onto wall and hold, pressing for 30 seconds.

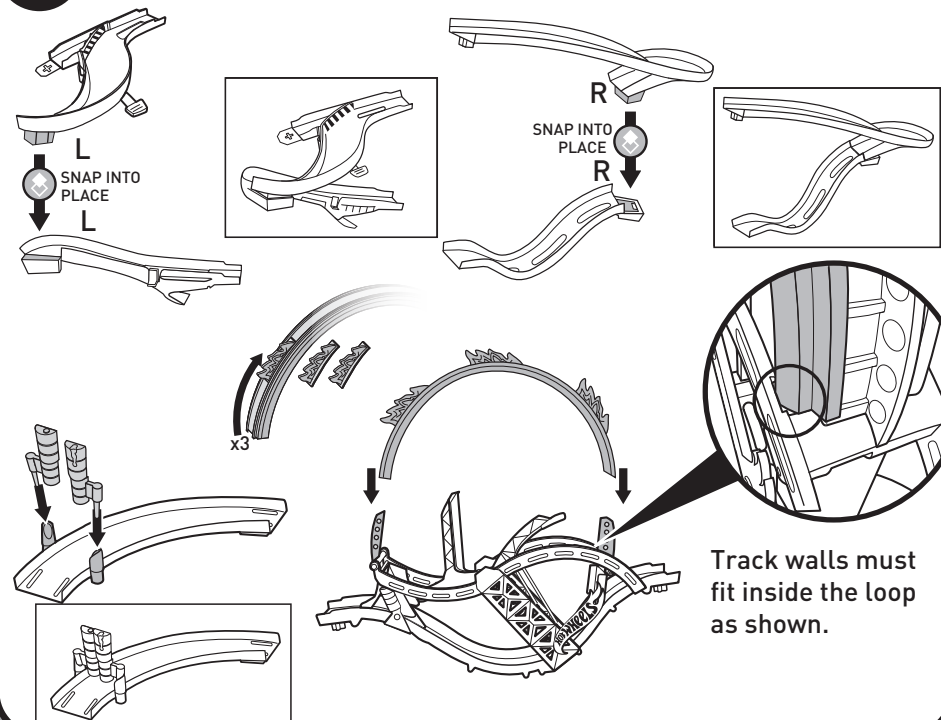
Red arrow should line up with arrow on bracket.

NOTE: For optimal adhesion performance 3M recommends waiting 1 hour before adding weight to Command™ Strips.



4 ASSEMBLE TRACK PIECES

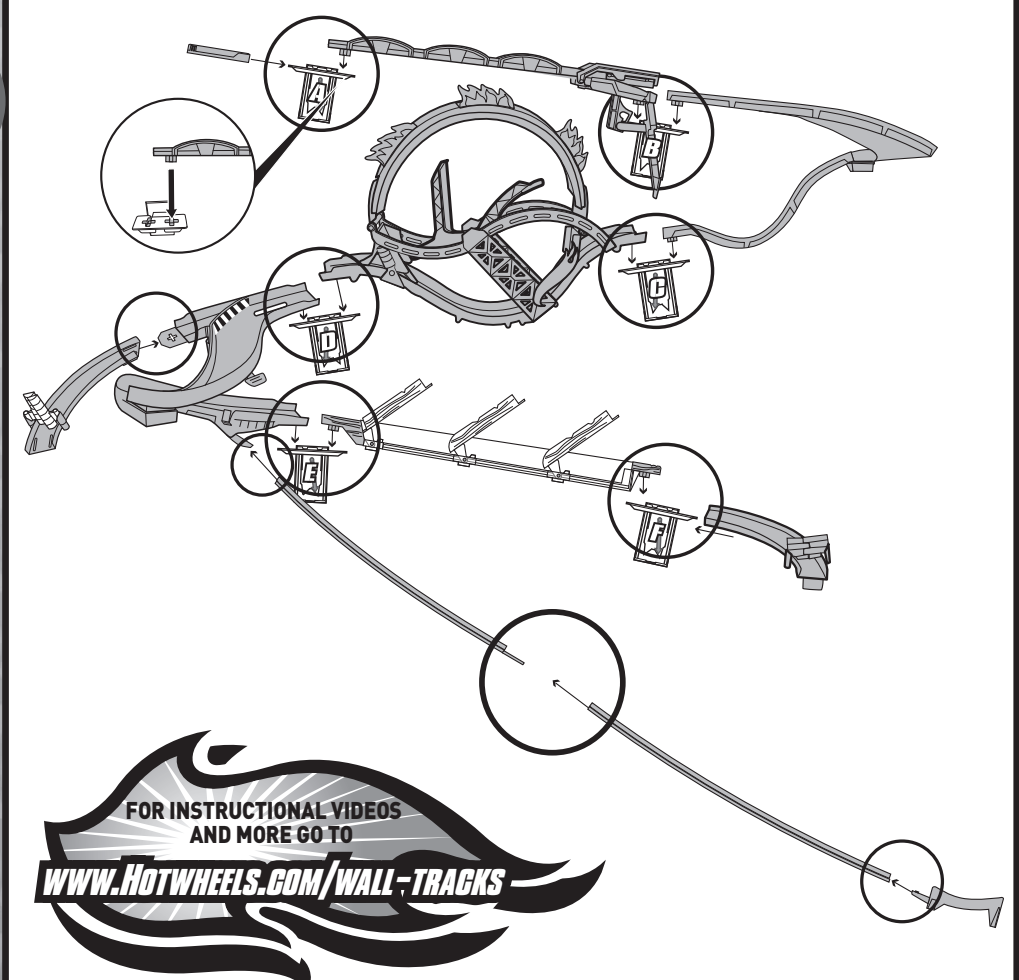
Pre-assemble pieces as shown.



Track walls must fit inside the loop as shown.

5 HANG TRACK ON WALL

Once poster and brackets are mounted on wall, attach track pieces as shown.



FOR INSTRUCTIONAL VIDEOS AND MORE GO TO WWW.HOTWHEELS.COM/WALL-TRACKS

TO REPLACE RUBBER BAND:

