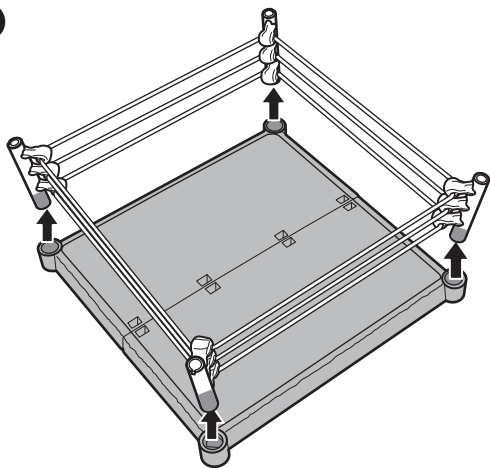
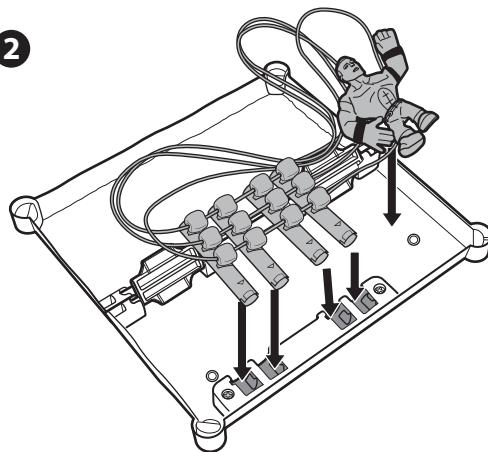


RESET

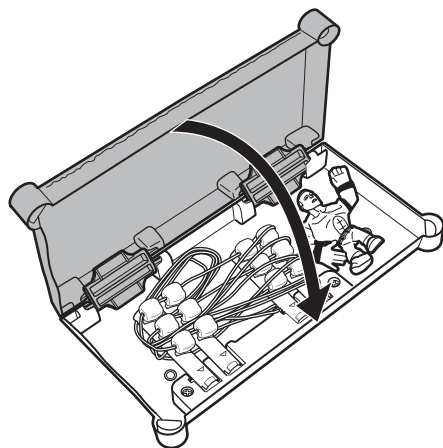
1



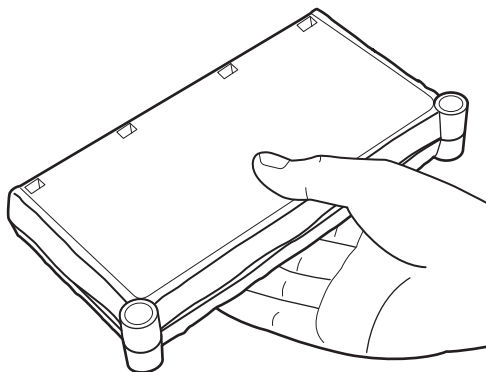
2



3



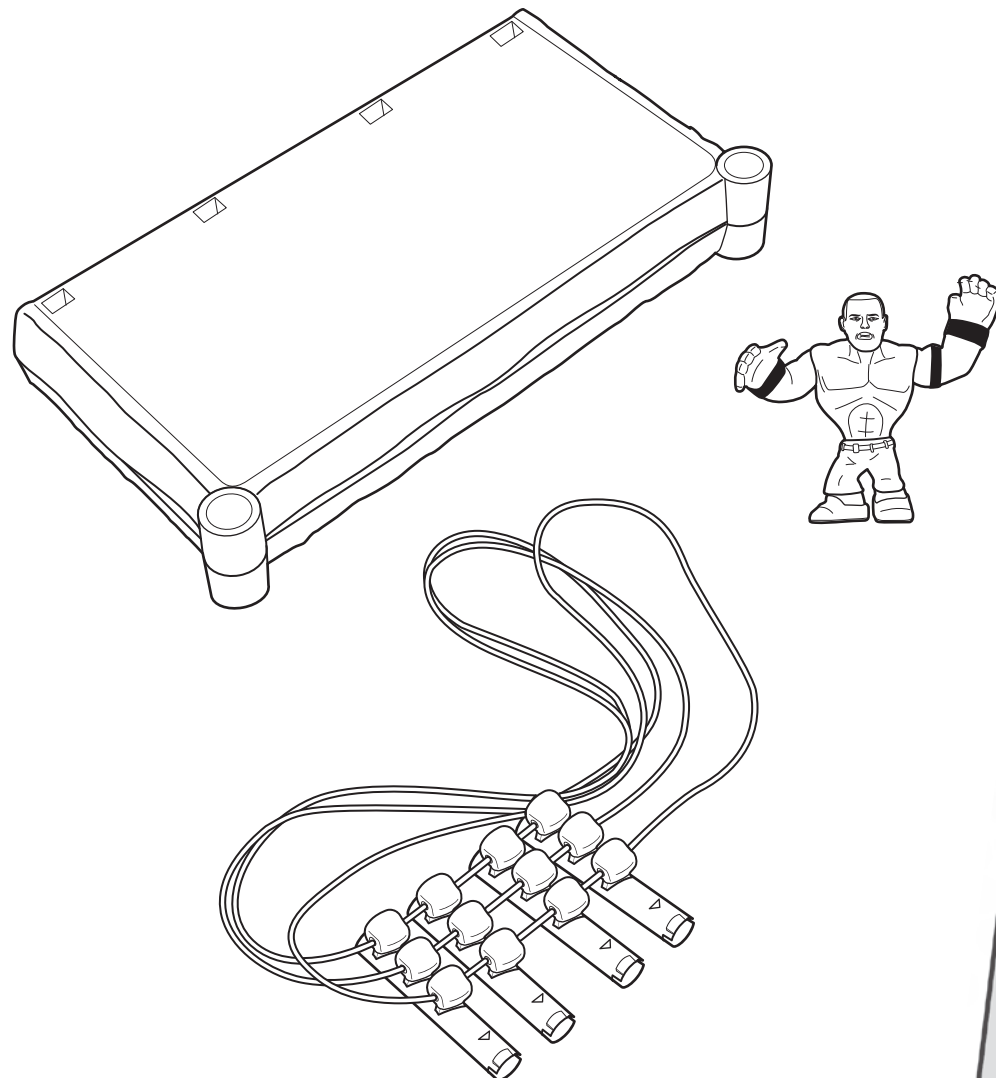
4



FLIP-OUT RING PLAYSET INSTRUCTIONS 3+

Please keep these instructions for future reference as they contain important information.

CONTENTS



©2011 Mattel, Inc. All Rights Reserved.

Mattel, Inc., 636 Girard Avenue, East Aurora, NY 14052, U.S.A. Consumer Relations 1-800-524-8697. Mattel U.K. Ltd., Vanwall Business Park, Maidenhead SL6 4UB. Helpline 01628 500303. Mattel Australia Pty., Ltd., Richmond, Victoria. 3121. Consumer Advisory Service - 1300 135 312. Mattel East Asia Ltd., Room 1106, South Tower, World Finance Centre, Harbour City, Tsimshatsui, HK, China. Diimport & Diedarkan Oleh: Mattel SEA Ptd Ltd.(993532-P) Lot 13.5, 13th Floor, Menara Lien Hoe, Persiaran Tropicana Golf Country Resort, 47410 PJ. Tel:03-78803817, Fax:03-78803867.

Asst: V7136
W7999-0920

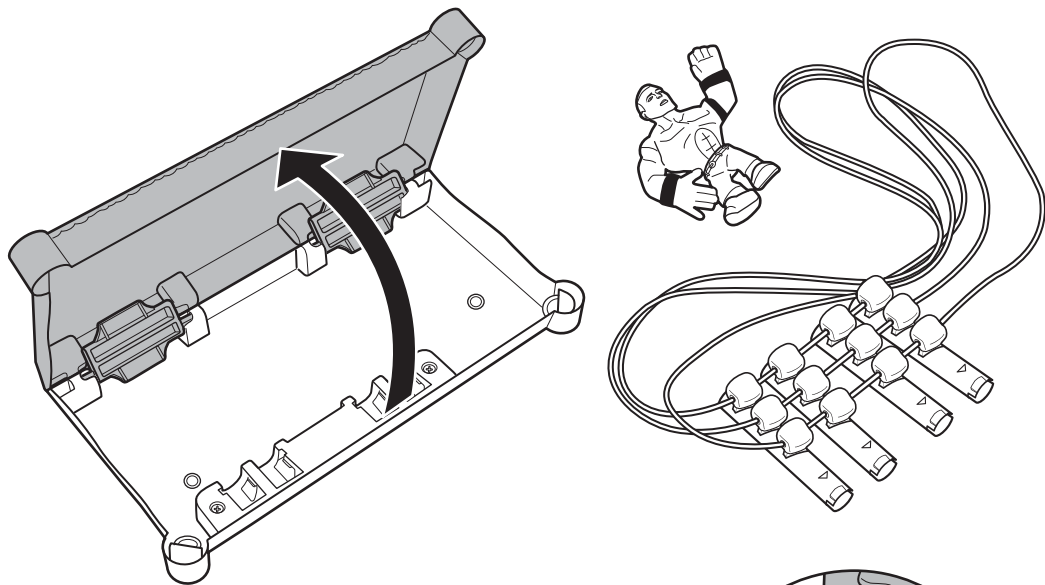


All WWE programming, talent names, images, likenesses, slogans, wrestling moves, trademarks, logos and copyrights are the exclusive property of WWE and its subsidiaries. All other trademarks, logos and copyrights are the property of their respective owners. ©2011 WWE. All Rights Reserved.

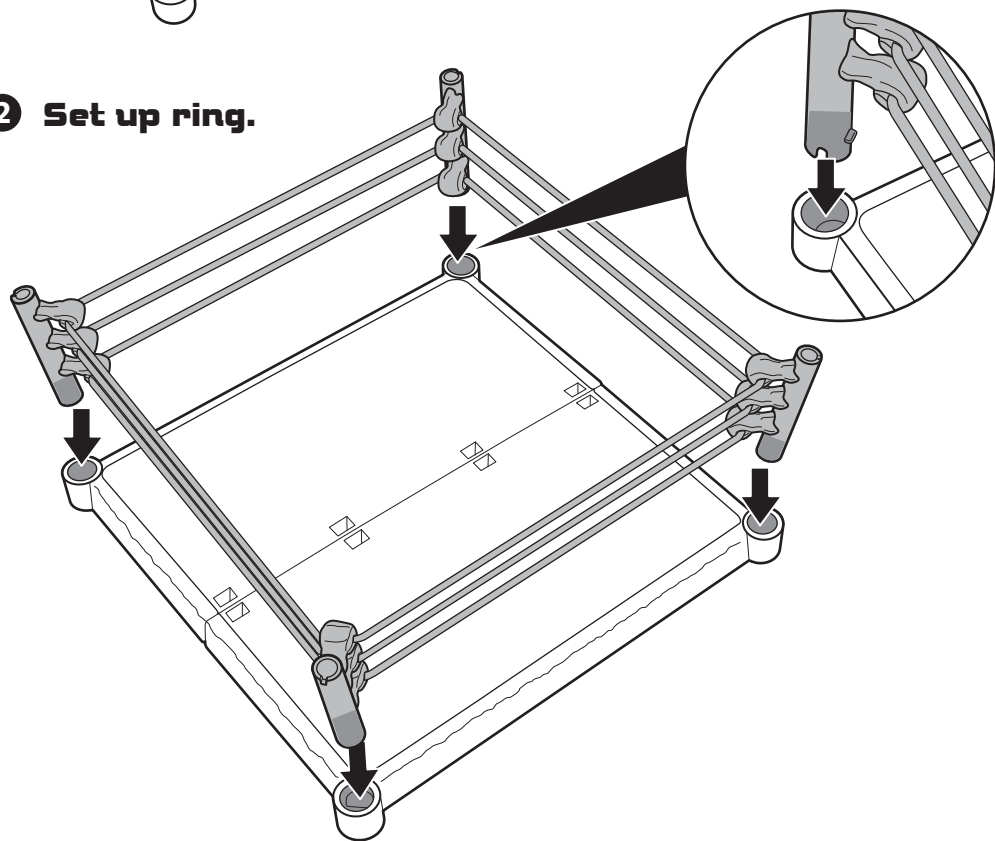
service.mattel.com

ASSEMBLY

1 Open and remove contents.

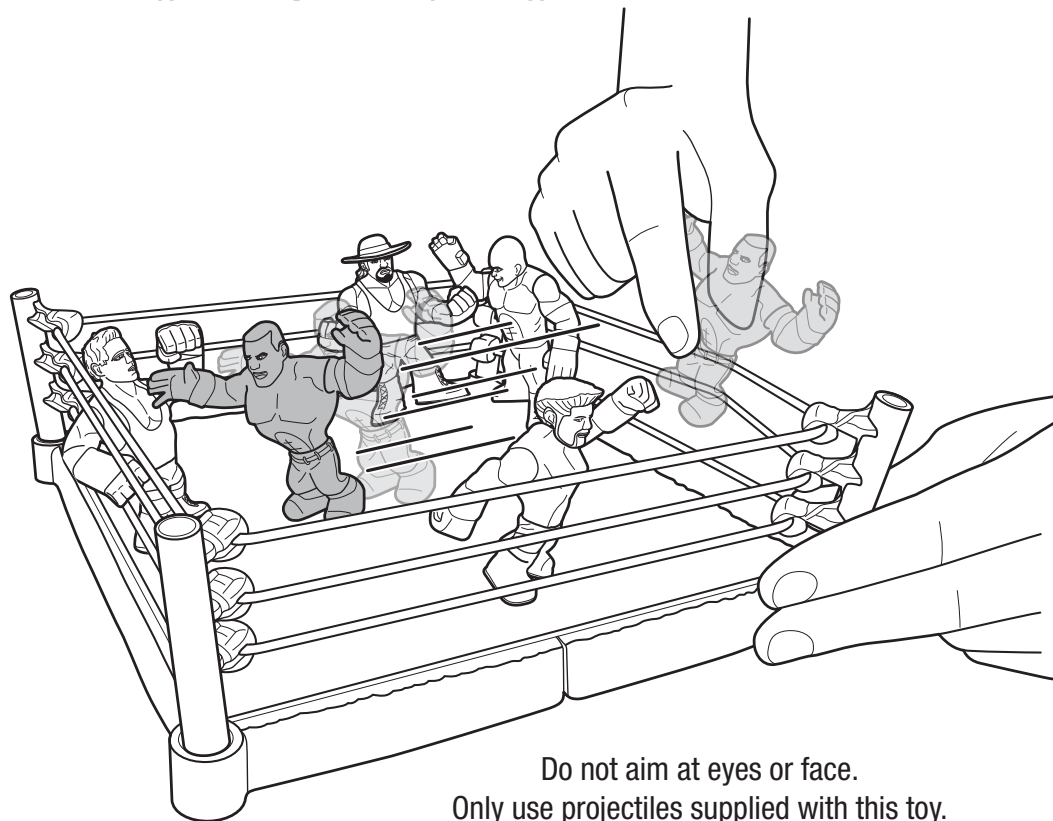


2 Set up ring.



TO PLAY

Bounce off the ropes and face off!



Do not aim at eyes or face.
Only use projectiles supplied with this toy.
Do not fire at point blank range.

JOHN CENA® FIGURE INCLUDED.
ADDITIONAL FIGURES SOLD SEPARATELY, SUBJECT TO AVAILABILITY.