

- Please keep this instruction sheet for future reference, as it contains important information.
- Adult assembly is required.
- Tool required for assembly: Phillips screwdriver (not included).

## Important Information

### **WARNING**

#### **Prevent Entanglement Injury**

##### **Crib Mobile Use**

- Keep out of baby's reach.
- Remove mobile from crib or playpen when baby begins to push up on hands and knees.
- This product may not attach to all crib designs. Do not add additional strings or straps to attach to a crib or playpen.

##### **Stroller Toy Use**

- Do not attach link directly to crib or playpen.

### **CAUTION**

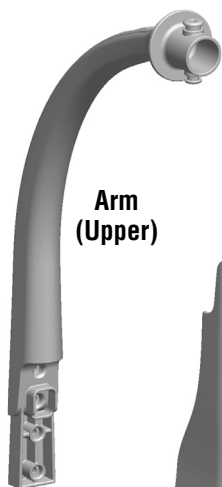
This package contains small parts. For adult assembly only.

- Use as a mobile from birth until 5 months.
- A mobile is intended for visual stimulation and not to be grasped by a child.

### **Care**

- Wipe this toy with a clean, damp cloth. Do not immerse this toy.
- This toy has no consumer serviceable parts. Do not take this toy apart.

## Assembled Parts



**Arm  
(Upper)**



**Arm  
(Lower)**



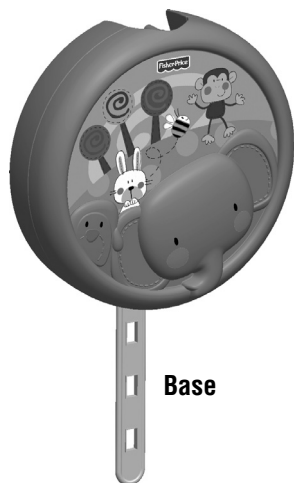
**Giraffe**



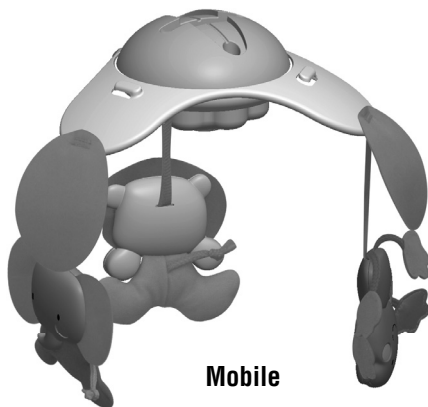
**Mobile Link Cover**



**Mobile Link**



**Base**



**Mobile**

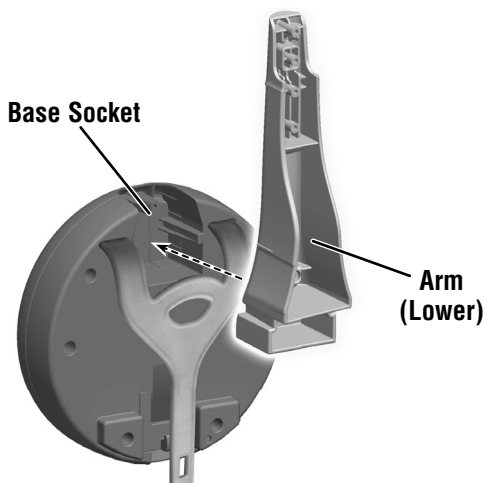


**M3,5 x 15 mm Screw – 5**

Screw is shown actual size.

*Tighten all screws with a Phillips screwdriver.  
Do not over-tighten the screws.*

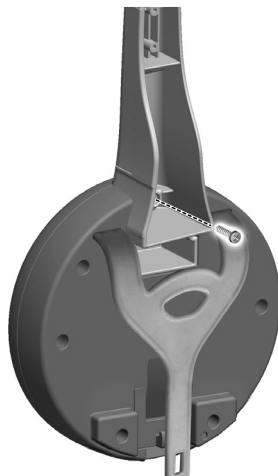
# Assembly



1

- Fit the lower arm into the socket in the back of the base.

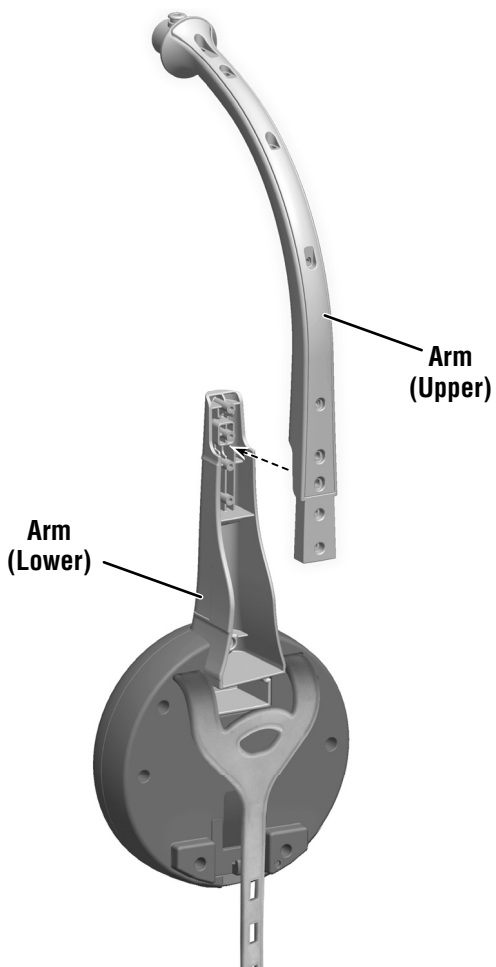
*Hint: You may need to pull the attachment strap on the base down to fit the arm in the base.*



2

- Insert a screw into the lower arm and tighten.

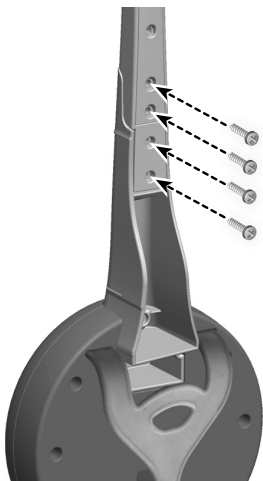
## Assembly



**3**

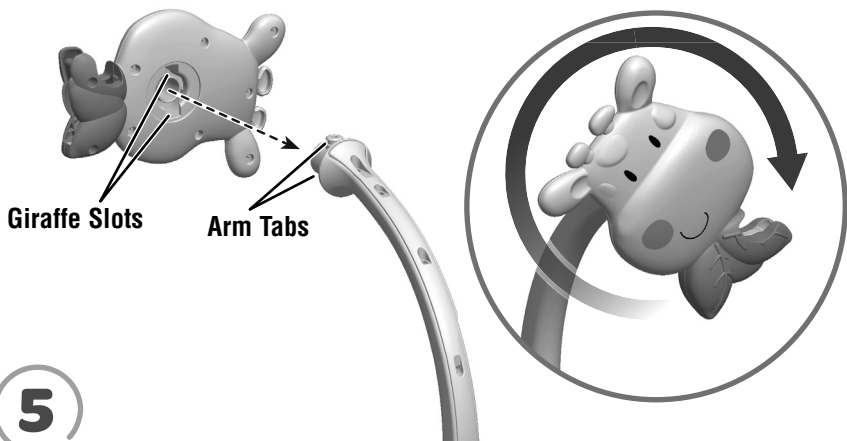
- Fit the upper arm to the lower arm.

# Assembly



4

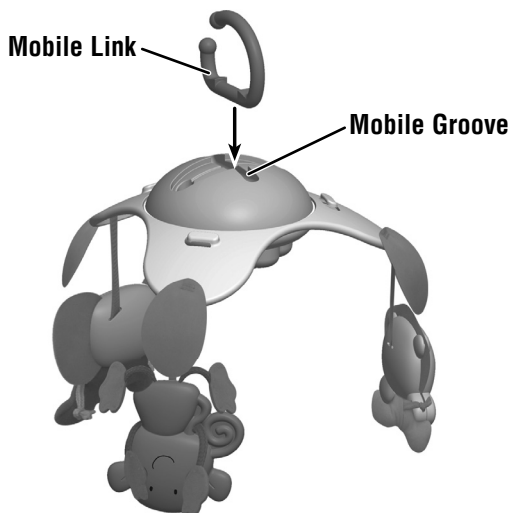
- Insert four screws into the arm assembly and tighten.



5

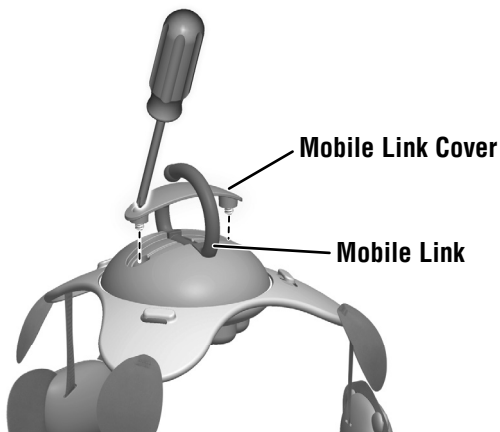
- First, align the tabs on the end of the arm with the slots in the back of the giraffe.
- Then, turn the giraffe to **"snap"** in place on the end of the arm.

## Assembly



6

- Fit the flat end of the mobile link into the groove in the mobile.

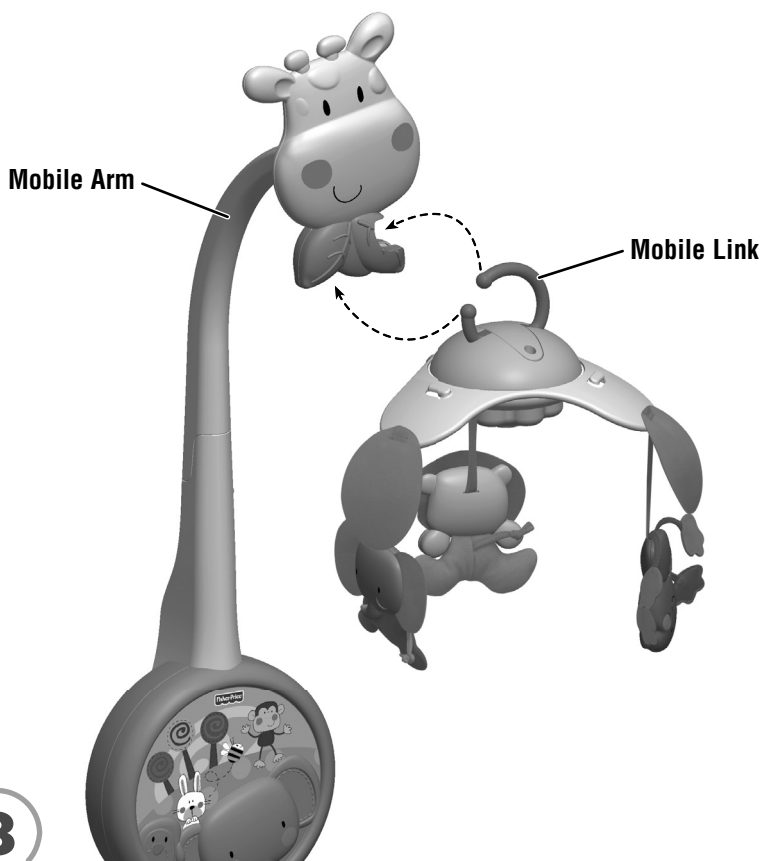


7

- Fit the mobile link cover onto the top of the mobile.
- Tighten the screws.

**Hint:** The screws are assembled to the mobile link cover.

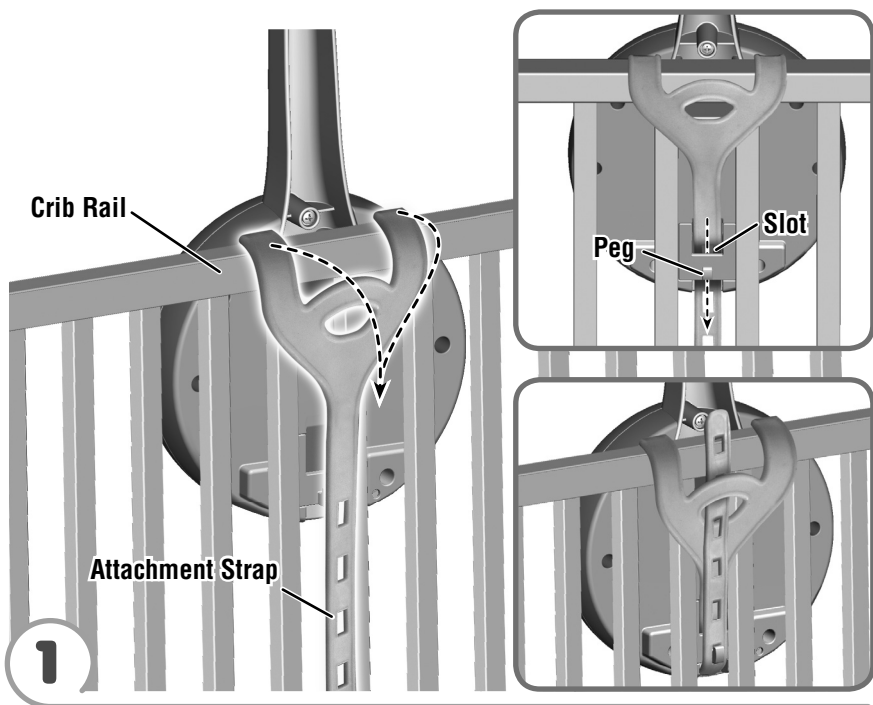
# Assembly



- Fit the ends of the mobile link onto the mobile arm.
- Push to **“snap”** the link in place.

## Mobile Use Crib Attachment

**IMPORTANT!** Always attach all provided fasteners (strings, straps, clamps, etc.) tightly to a crib or playpen according to the instructions. Do not add additional strings or straps to attach to a crib. Check frequently.

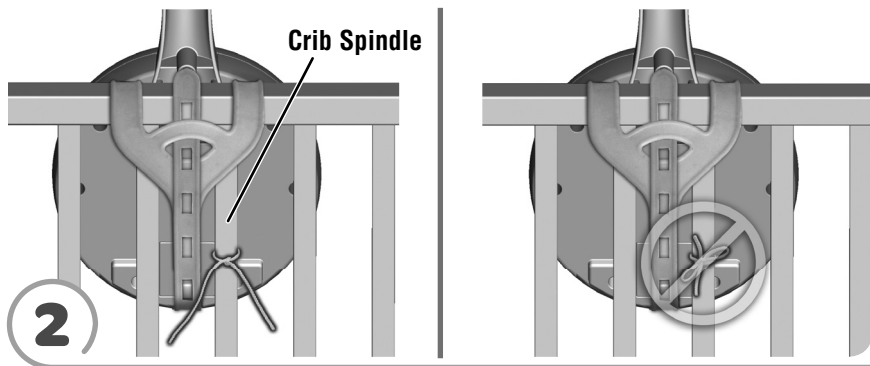


- 1
- Position the toy inside the crib.
  - Wrap the toy's attachment strap around the crib top horizontal rail.
  - Slide the end of the attachment strap through the slot on the back of the toy.
  - Pull the end of the attachment strap up and fasten to the slot on the peg on the back of the toy.

**Note:** This toy should be snug against the crib rail and spindles. Use the strap slot that provides the tightest fit.

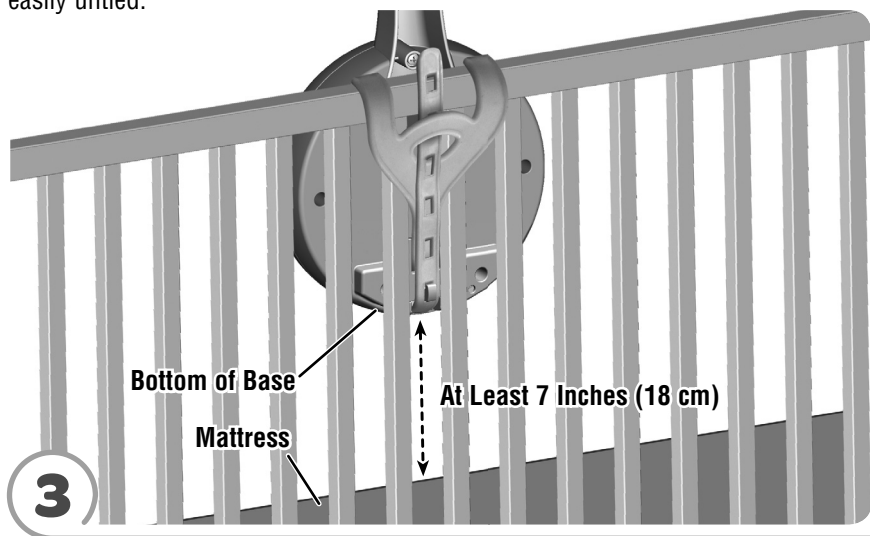
- If you have excess strap, slide the free end of the attachment strap under the slot at the top of the attachment strap.

## Mobile Use Crib Attachment



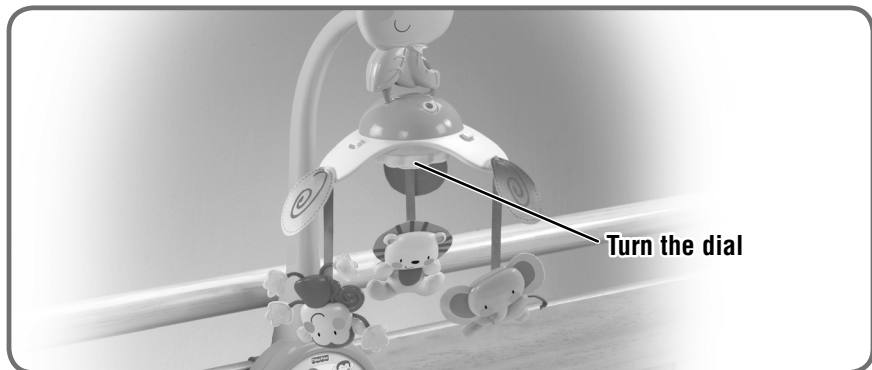
- Tie the toy's strings to a crib spindle.

**Note:** It is better to tie the strings in a knot than a bow, since a bow may be easily untied.



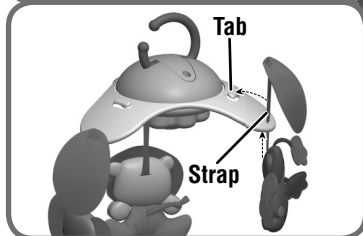
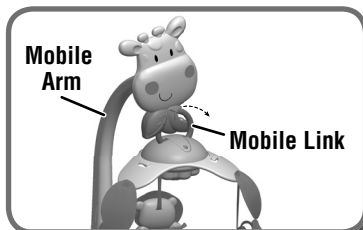
- Make sure the distance between the bottom of the product and the crib mattress is **at least 7 inches (18 cm)**.
- If the distance is less than 7 inches (18 cm): readjust the attachment straps to lift the product; or lower the crib mattress.

## Musical Crib Mobile



- Turn the dial on the bottom of the mobile clockwise for a musical tune. Do not over-wind the dial.

## Stroller Link Toy



- Pull the mobile link off the mobile arm to use as a stroller toy!
- Shorten the toy straps. Pull the toy straps up and then under the tabs on top of the toy.
- Fit the open end of the mobile link onto a stroller canopy.
- Turn the dial on the bottom of the mobile clockwise for a musical tune. Do not over-wind the dial.



## CONSUMER ASSISTANCE

1-800-432-5437 (US & Canada)

1300 135 312 (Australia)



**service.fisher-price.com**

Fisher-Price, Inc., 636 Girard Avenue, East Aurora, NY 14052.  
Hearing-impaired consumers: 1-800-382-7470.

### **Outside the United States:**

Canada: Mattel Canada Inc., 6155 Freemont Blvd.,  
Mississauga, Ontario L5R 3W2; [www.service.mattel.com](http://www.service.mattel.com).

Great Britain: Mattel UK Ltd, Vanwall Business Park,  
Maidenhead SL6 4UB. Helpline: 01628 500303.  
[www.service.mattel.com/uk](http://www.service.mattel.com/uk)

Mattel Europa B.V., Gondel 1, 1186MJ Amstelveen, Nederland.

Australia: Mattel Australia Pty. Ltd., 658 Church Street,  
Locked Bag #870, Richmond, Victoria 3121 Australia.

New Zealand: 16-18 William Pickering Drive,  
Albany 1331, Auckland.