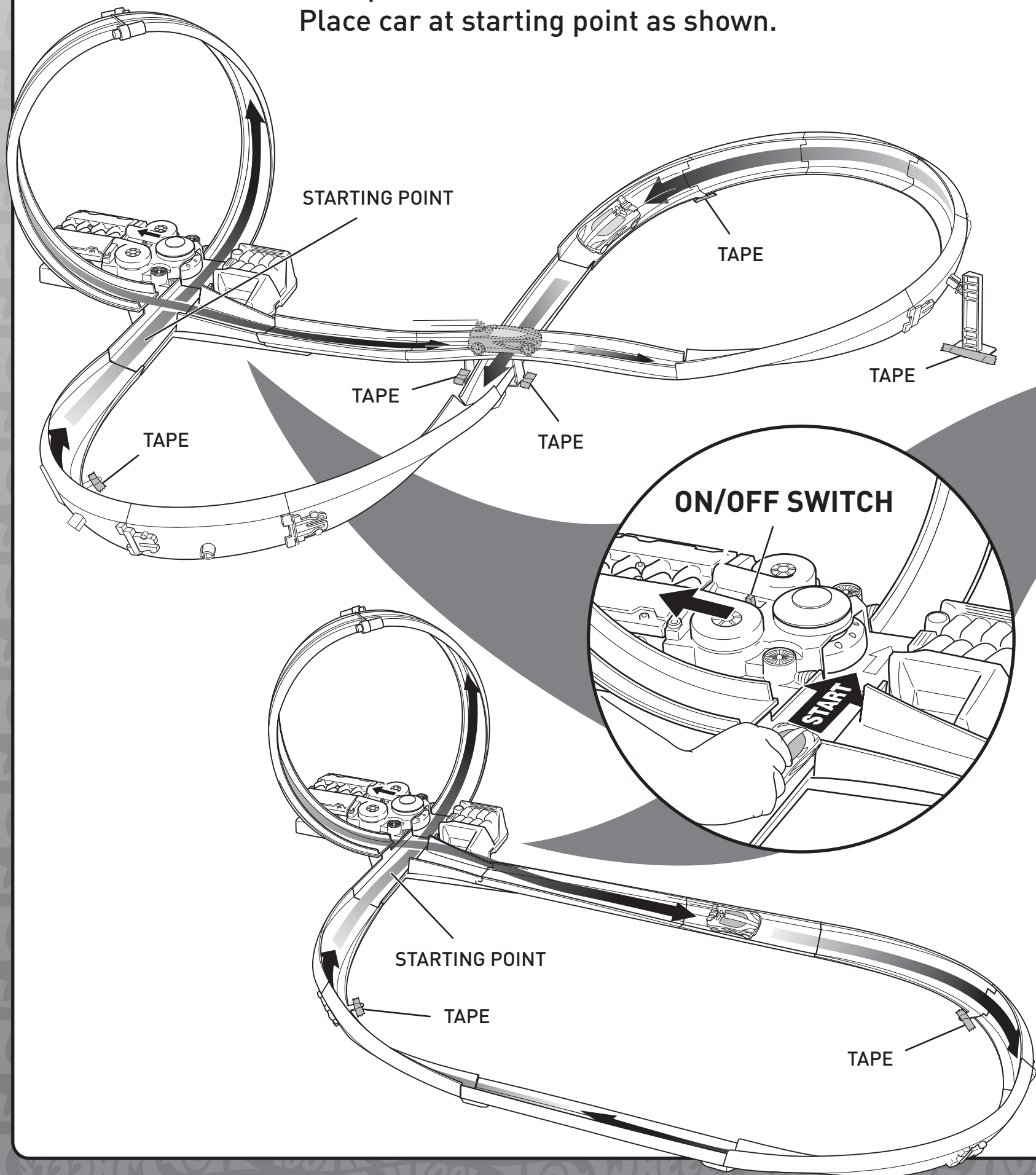


FRONT

TO PLAY

Turn power switch on.
Place car at starting point as shown.



Replace batteries when the booster can no longer propel cars through the set.

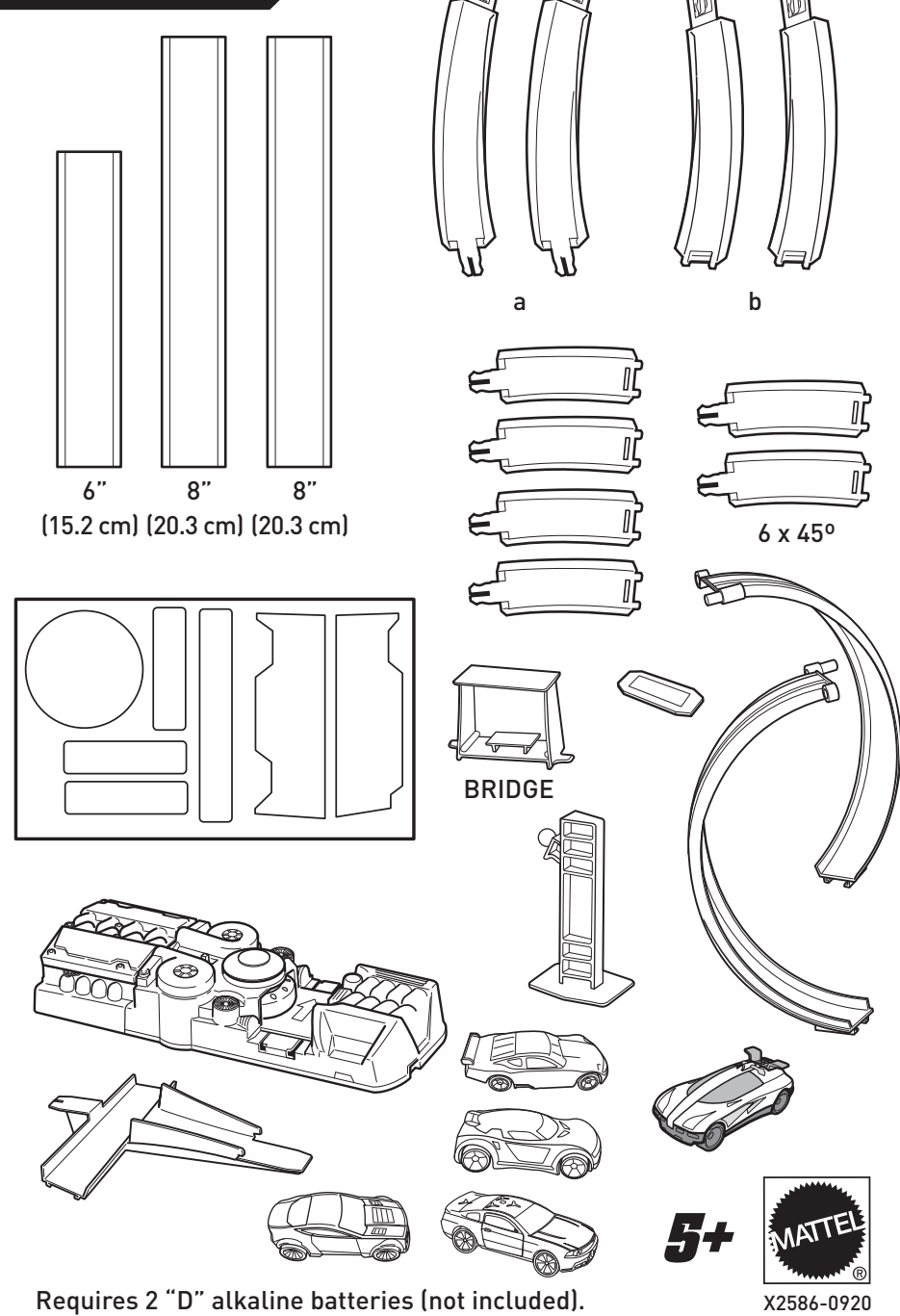


FIGURE 8 RACEWAY

INSTRUCTIONS

Keep these instructions for future reference as they contain important information.

CONTENTS

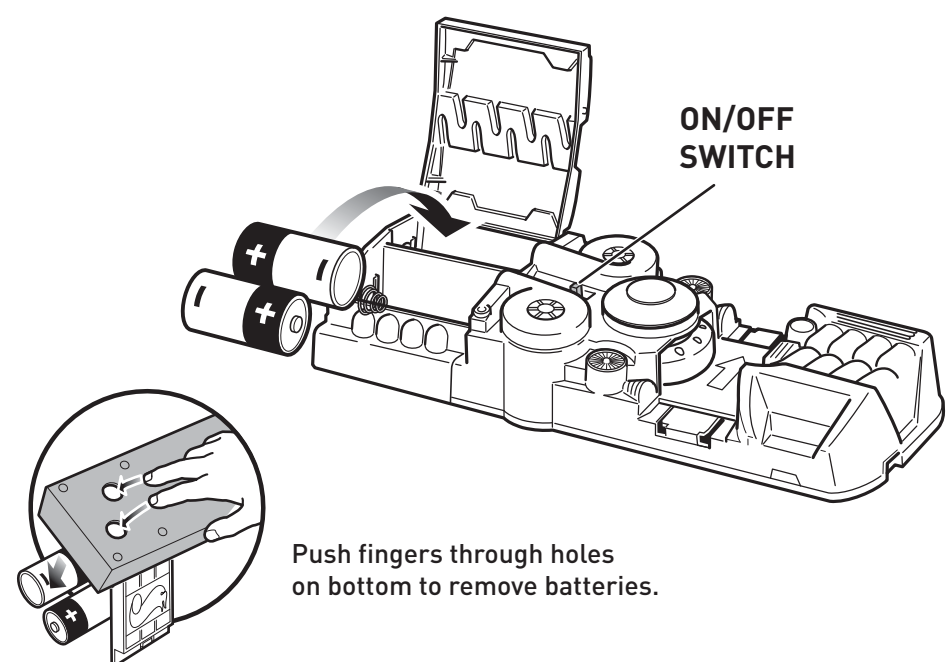


Requires 2 "D" alkaline batteries (not included). X2586-0920
 ©2011 Mattel. All Rights Reserved. Mattel, Inc., 636 Girard Avenue, East Aurora, NY 14052, U.S.A. Consumer Relations 1-800-524-6677. Mattel U.K. Ltd., Vauxhall Business Park, Mordenhead St, 618, Helston, 01628 500303, Mattel Australia Pty. Ltd., Richmond, Victoria, 3121 Consumer Advisory Service - 1300 135 312. Mattel East Asia Ltd., Room 1108, South Tower, World Finance Centre, Harbour City, Tsimshatsui, HK China. Dilimport & Diestarkan Oleh: Mattel SEA Pte Ltd, 993332-PJ Lot 13.5, 13th Floor, Menara Lian Hoe, Persiaran Tropicana Golf Country Resort, 47410 PJ, Tel: 03-78803817, Fax: 03-78803867. service.mattel.com

BACK

INSTALL BATTERIES

Open battery cover and insert 2 "D" size alkaline batteries (not included) as shown. For best performance, use alkaline batteries. Replace the batteries when the booster no longer propels the car through the set.

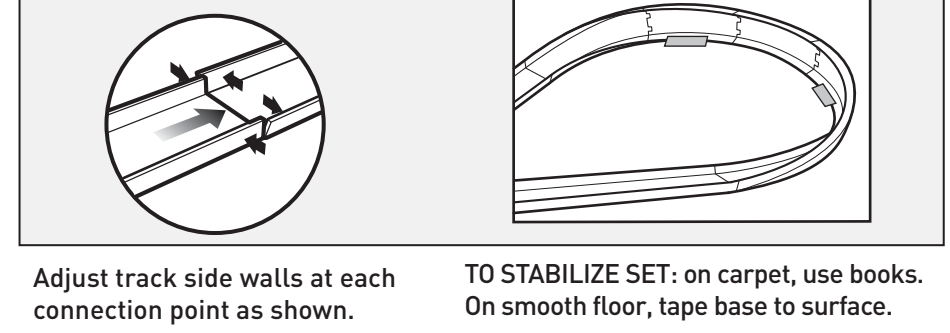


BATTERY SAFETY INFORMATION

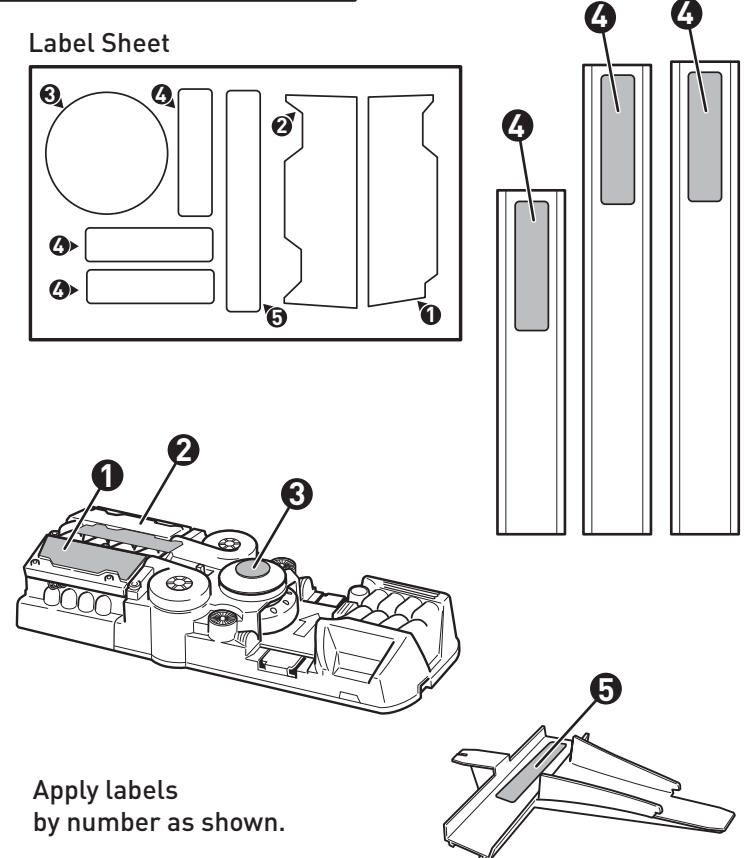
- In exceptional circumstances batteries may leak fluids that can cause a chemical burn injury or ruin your product. To avoid battery leakage:
 - Non-rechargeable batteries are not to be recharged.
 - Rechargeable batteries are to be removed from the product before being charged.
 - Rechargeable batteries are only to be charged under adult supervision.
 - Do not mix alkaline, standard (carbon-zinc), or rechargeable (nickel-cadmium) batteries.
 - Do not mix old and new batteries.
 - Only batteries of the same or equivalent type as recommended are to be used.
 - Batteries are to be inserted with the correct polarity.
 - Exhausted batteries are to be removed from the product.
 - The supply terminals are not to be short-circuited.
 - Dispose of batteries safely.
 - Do not dispose of this product in a fire. The batteries inside may explode or leak.

Protect the environment by not disposing of this product with household waste [2002/96/EC]. Check your local authority for recycling advice and facilities.

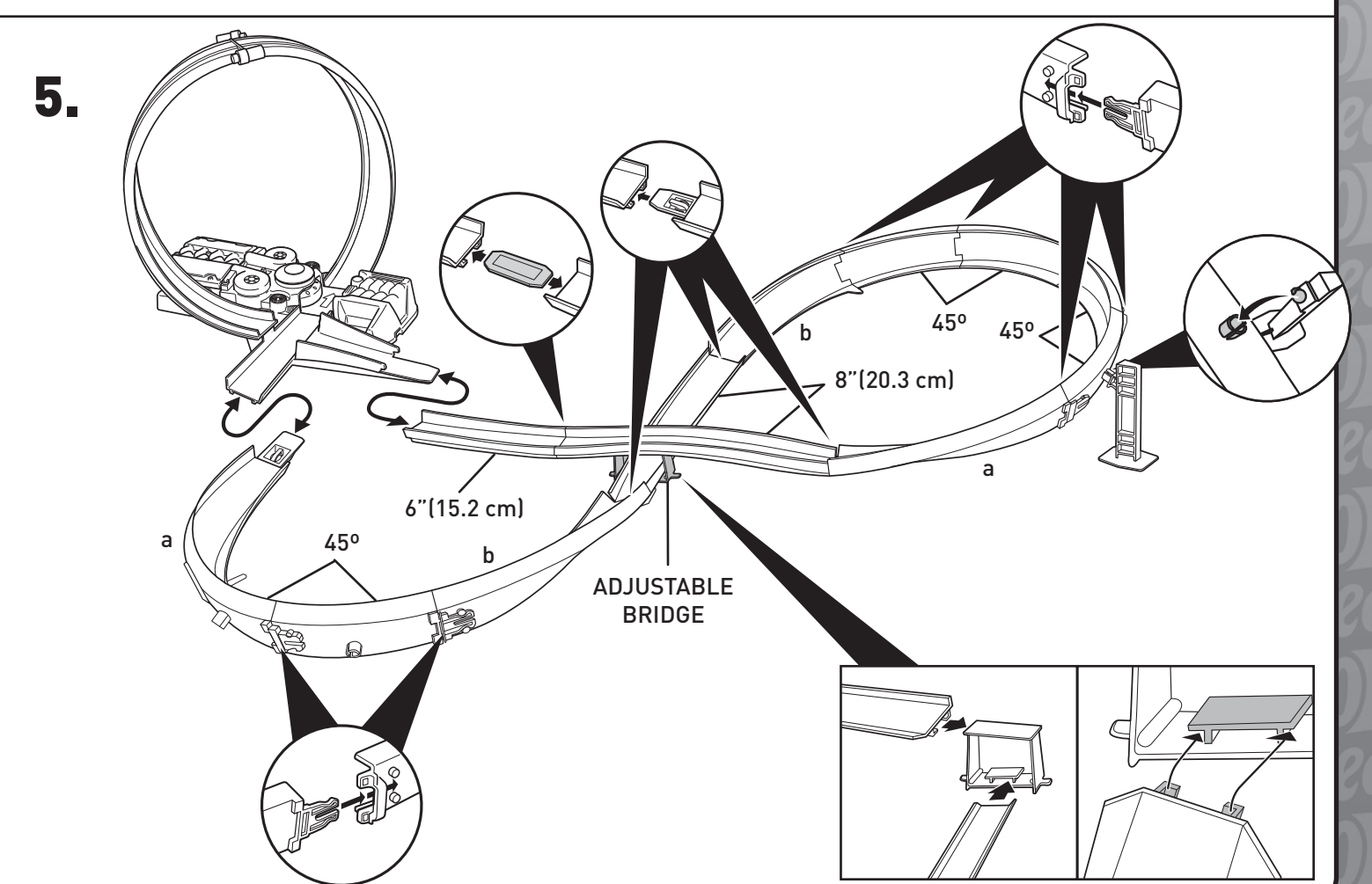
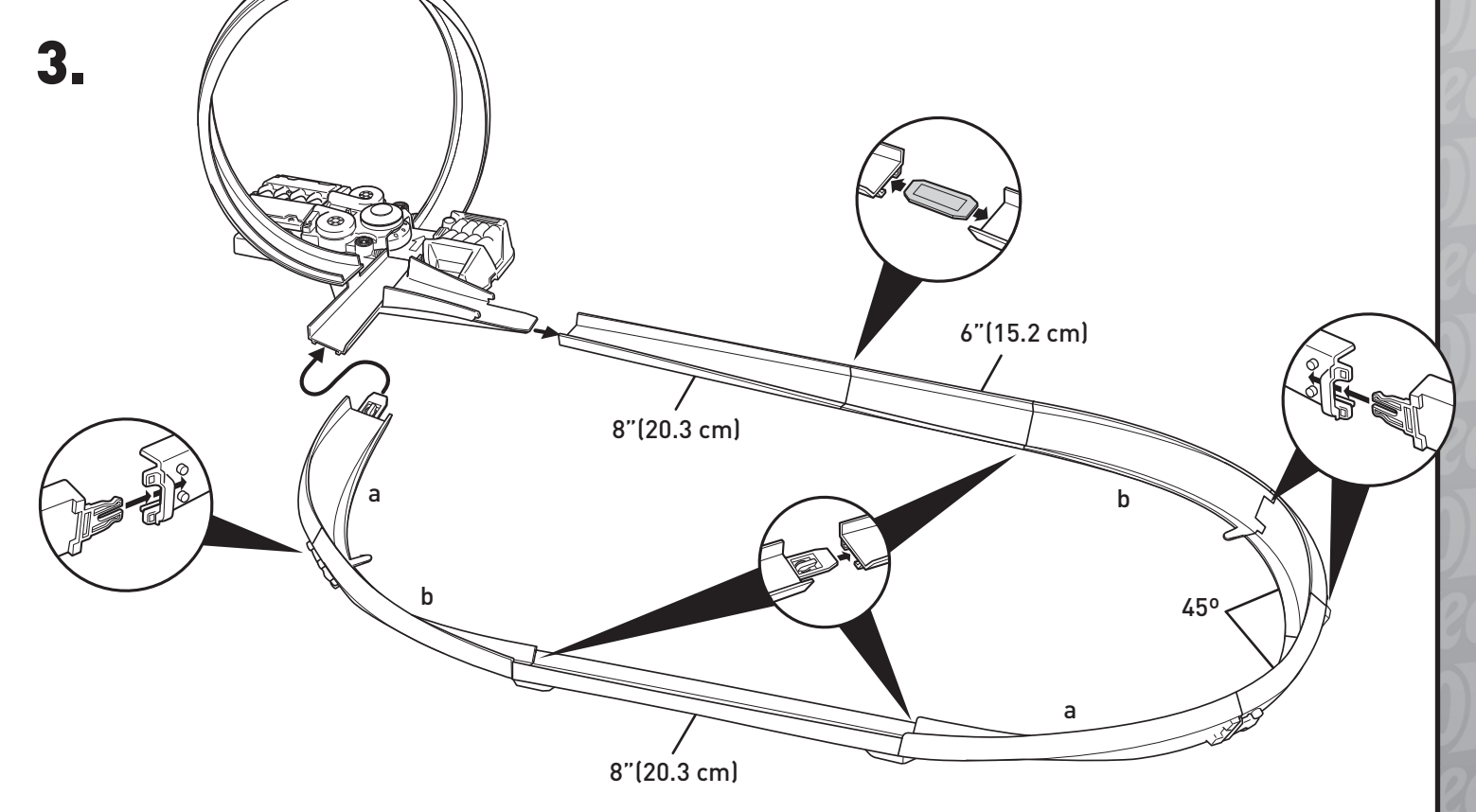
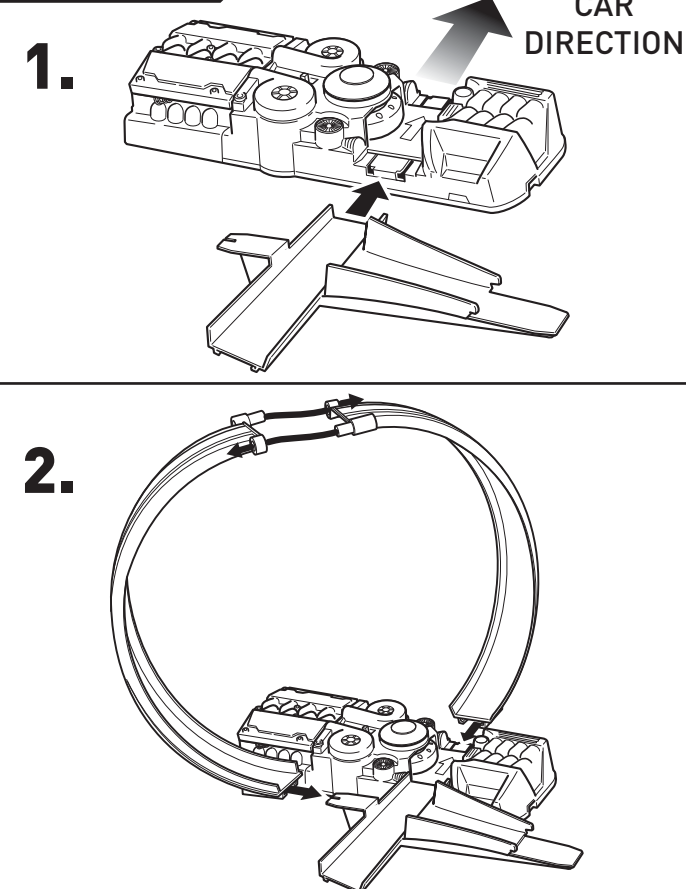
OPERATING TIPS



APPLY LABELS



ASSEMBLY



INSTRUCTION SHEET SPECIFICATIONS

| | |
|---------------|----------------|
| Toy: | HW Starter Set |
| Toy No.: | X2586 |
| Part No.: | 0920 |
| Trim Size: | 22" W x 11" H |
| Folded Size: | 5.5" W x 11" H |
| Type of Fold: | See Dummy |
| # colors: | One |
| Colors: | Black |
| Paper Stock: | White Offset |
| Paper Weight: | 70 lb. |
| EDM No.: | 004 |
| Date: | Apr. 16, 2011 |

