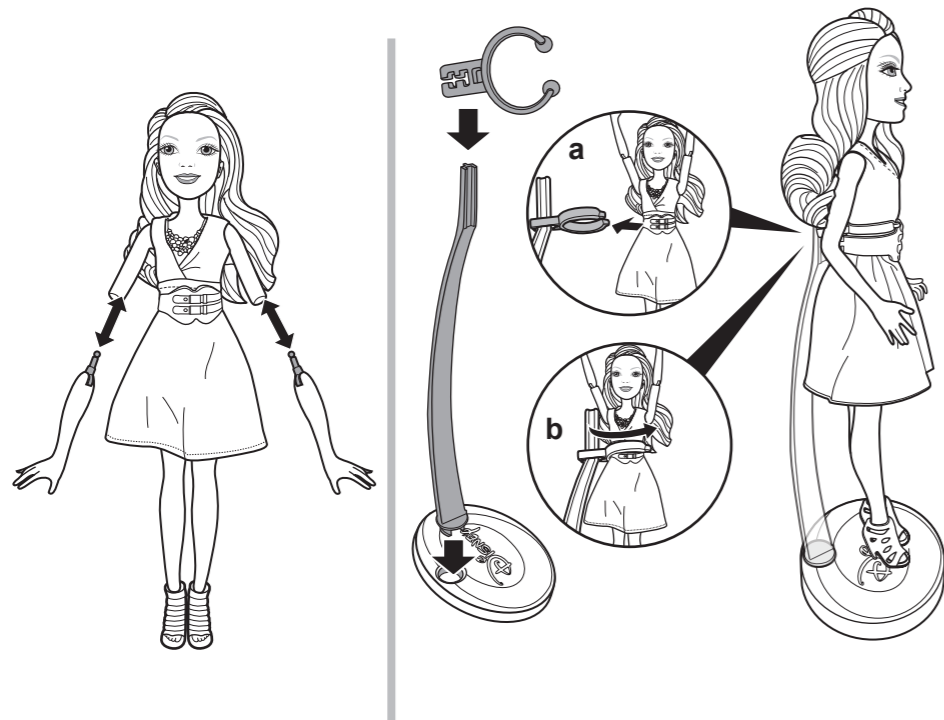


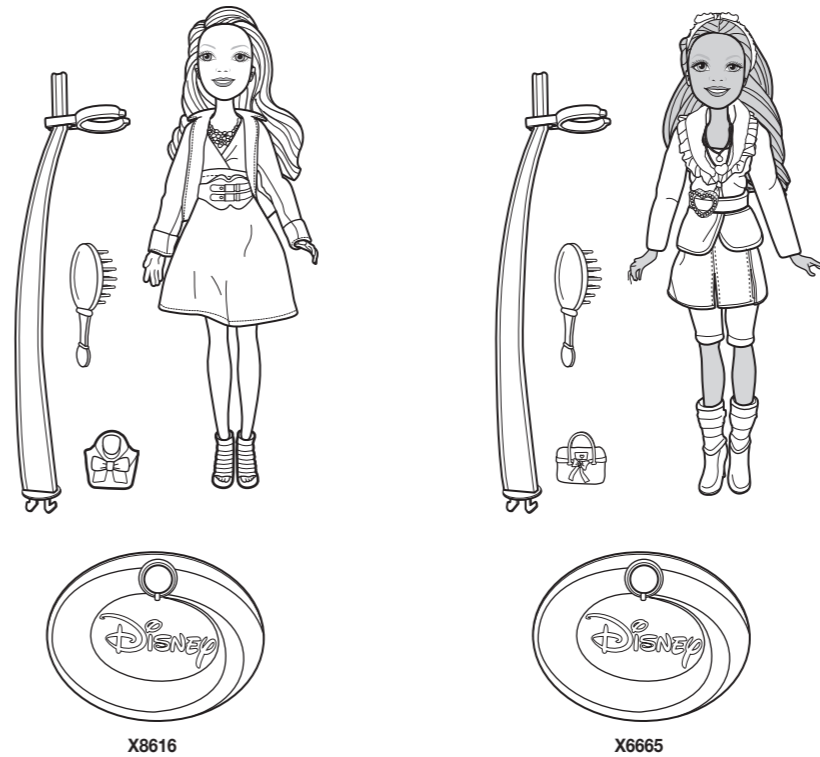
# INSTRUCTIONS

## CONTENTS

6+   
 X8616-0920  
 X6665  
 Asst. V1029



To make it easier to change doll's fashions, the arms may be temporarily removed, then reattached as shown.



### INSTRUCTIONS SHEET SPECIFICATIONS

Toy: DSNY VIP DL ASST  
 Toy No.: X8616  
 Part No.: 0920 - DOM  
 Trim Size: 5.5" W x 8.5" H  
 Folded Size: \_\_\_\_\_  
 Type of Fold: 2 panel  
 # colors: One  
 Colors: Black  
 Paper Stock: White Offset  
 Paper Weight: 70 lb.  
 EDM No.: \_\_\_\_\_

Doll cannot stand alone.  
 Each set sold separately, subject to availability.

#### CONSUMER INFORMATION

Need Assistance? Visit [service.mattel.com](http://service.mattel.com) or call 1-800-524-8697 (US and Canada only).

[SERVICE.MATTEL.COM](http://SERVICE.MATTEL.COM)

Mattel, Inc., 636 Girard Avenue, East Aurora, NY 14052, U.S.A. Consumer Relations 1-800-524-8697.  
 Mattel U.K. Ltd., Vanwall Business Park, Maidenhead SL6 4UB. Helpline 01628 500303.  
 Mattel Australia Pty., Ltd., Richmond, Victoria. 3121. Consumer Advisory Service - 1300 135 312.  
 Mattel East Asia Ltd., Room 1106, South Tower, World Finance Centre, Harbour City, Tsimshatsui, HK, China.  
 Diimport & Diedarkan Oleh: Mattel SEA Ptd Ltd.(993532-P) Lot 13.5, 13th Floor, Menara Lien Hoe, Persiaran Tropicana Golf Country Resort, 47410 P.J. Tel:03-78803817, Fax:03-78803867.



Please remove everything from the package and compare to the contents shown here.  
 If any items are missing, please contact your local Mattel office.

*Keep these instructions for future reference as they contain important information.*

©2012 Mattel. All Rights Reserved.