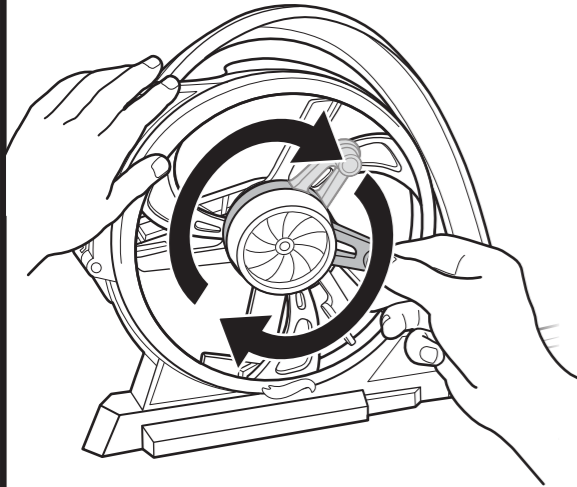


TO PLAY

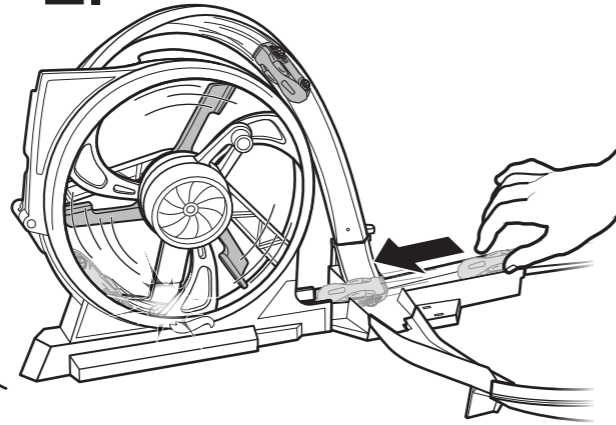
1.



For optimal performance, wind crank 10 times.

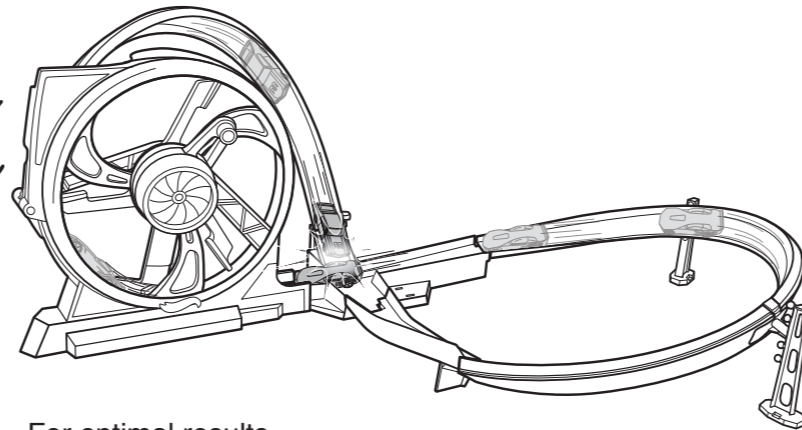
2.

Push car to launch.



3.

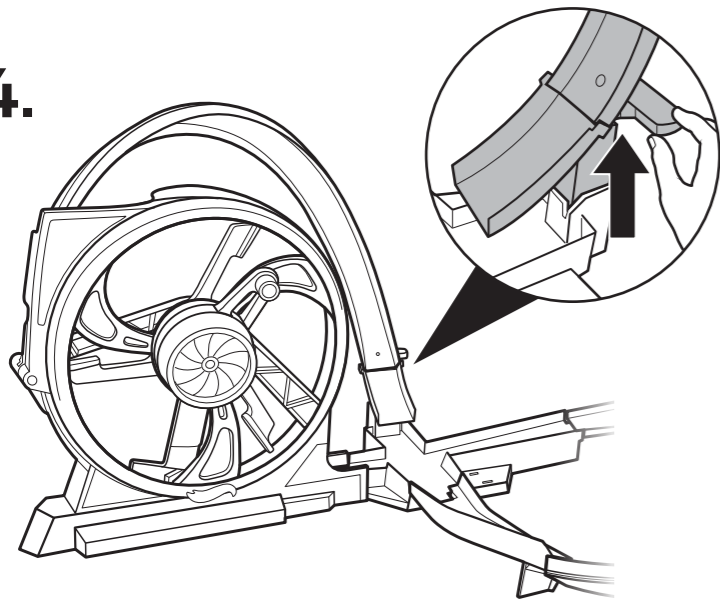
Launch another car for crash action!



For optimal results, use low-adhesive tape to attach supports to playing surface.

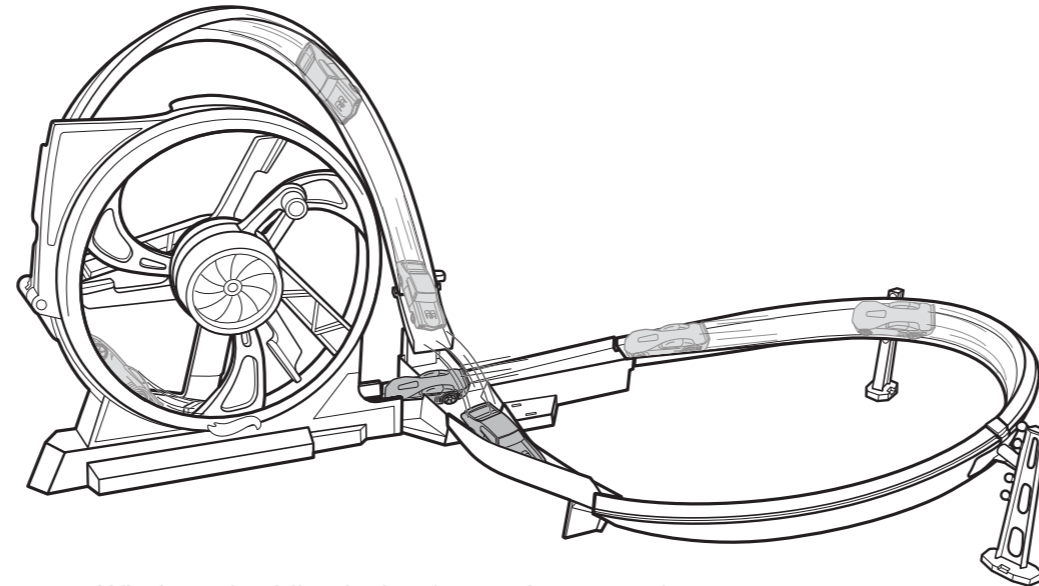
4.

a



Raise jump ramp to avoid crashing.

b



Wind crank while playing for continuous action.



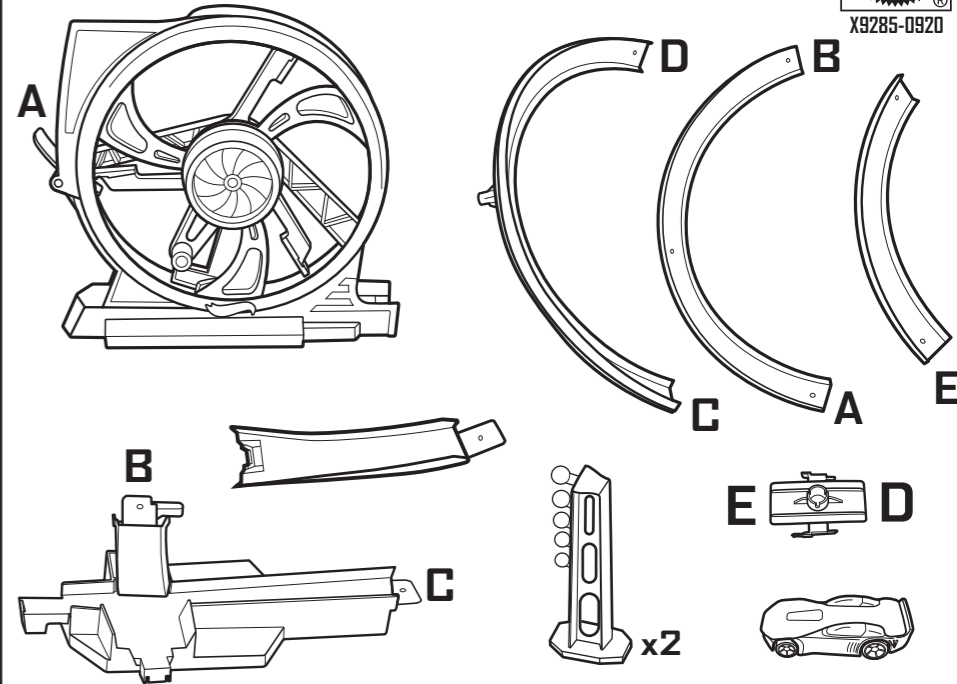
TURBINE TWISTER™

INSTRUCTIONS

Please keep these instructions for future reference as they contain important information.

CONTENTS

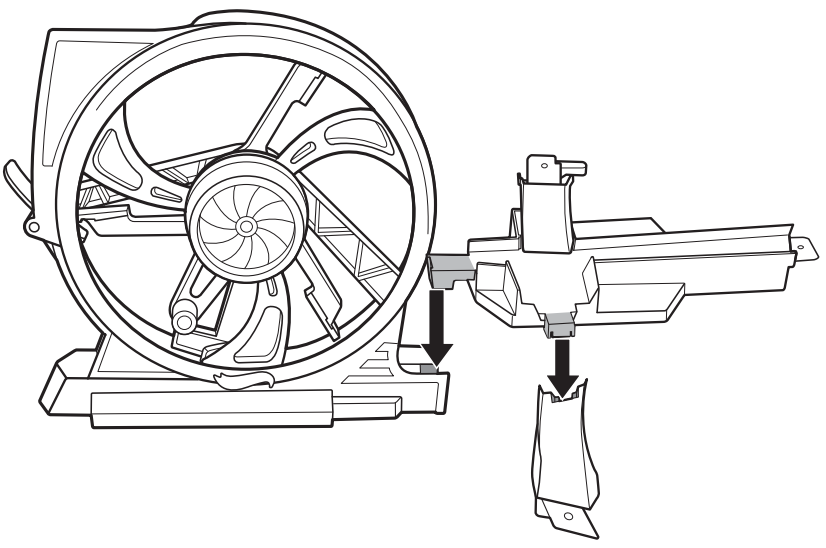
4+



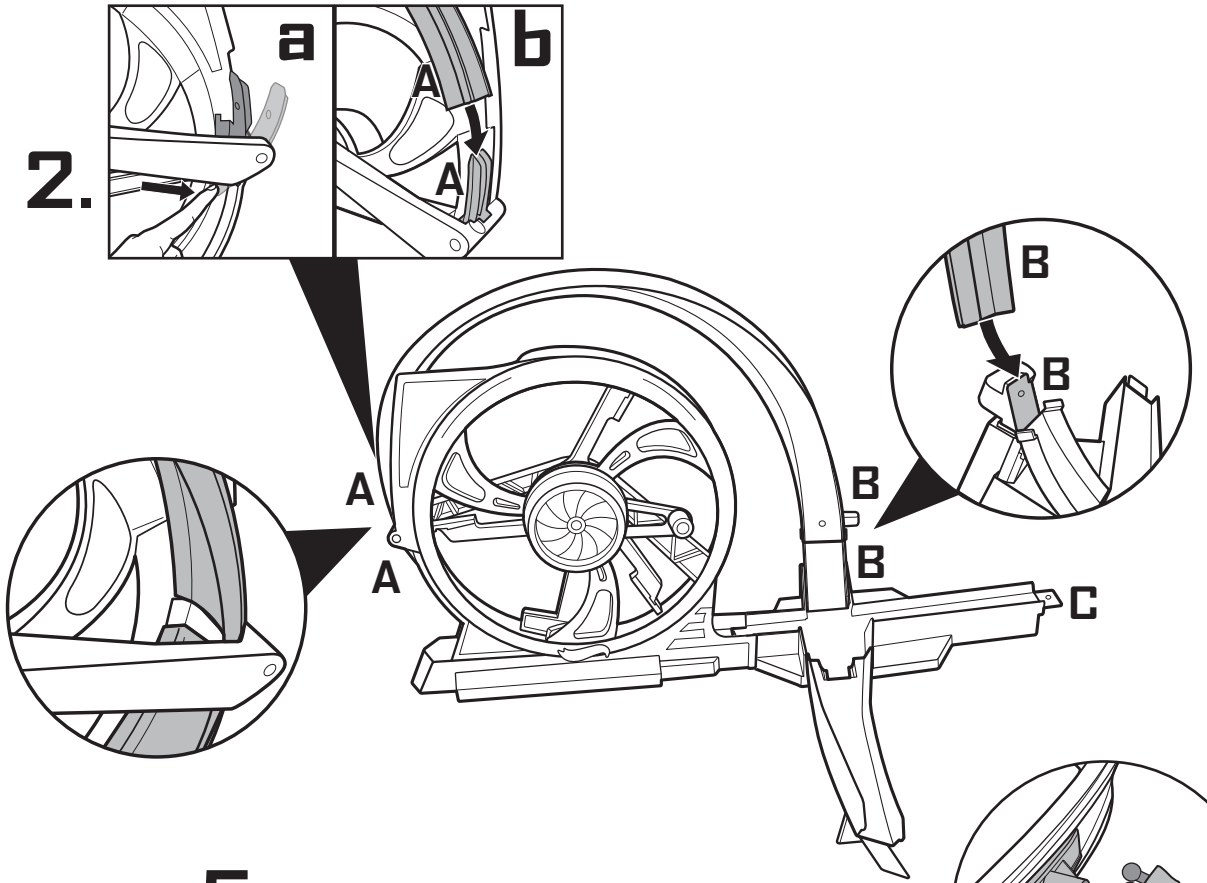
©2012 Mattel. All Rights Reserved. Mattel, Inc., 636 Girard Avenue, East Aurora, NY 14052, U.S.A. Consumer Relations 1-800-524-8697. Mattel U.K. Ltd., Vanwall Business Park, Maidenhead SL6 4UB. Helpline 01628 500303. Mattel Australia Pty., Ltd., Richmond, Victoria. 3121. Consumer Advisory Service - 1300 135 312. Mattel East Asia Ltd., Room 1106, South Tower, World Finance Centre, Harbour City, Tsimshatsui, HK, China. Diimport & Diedarkan Oleh: Mattel SEA Ptd Ltd. (993532-P) Lot 13.5, 13th Floor, Menara Lien Hoe, Persiaran Tropicana Golf Country Resort, 47410 PJ. Tel: 03-78803817, Fax: 03-78803867. service.mattel.com

ASSEMBLY

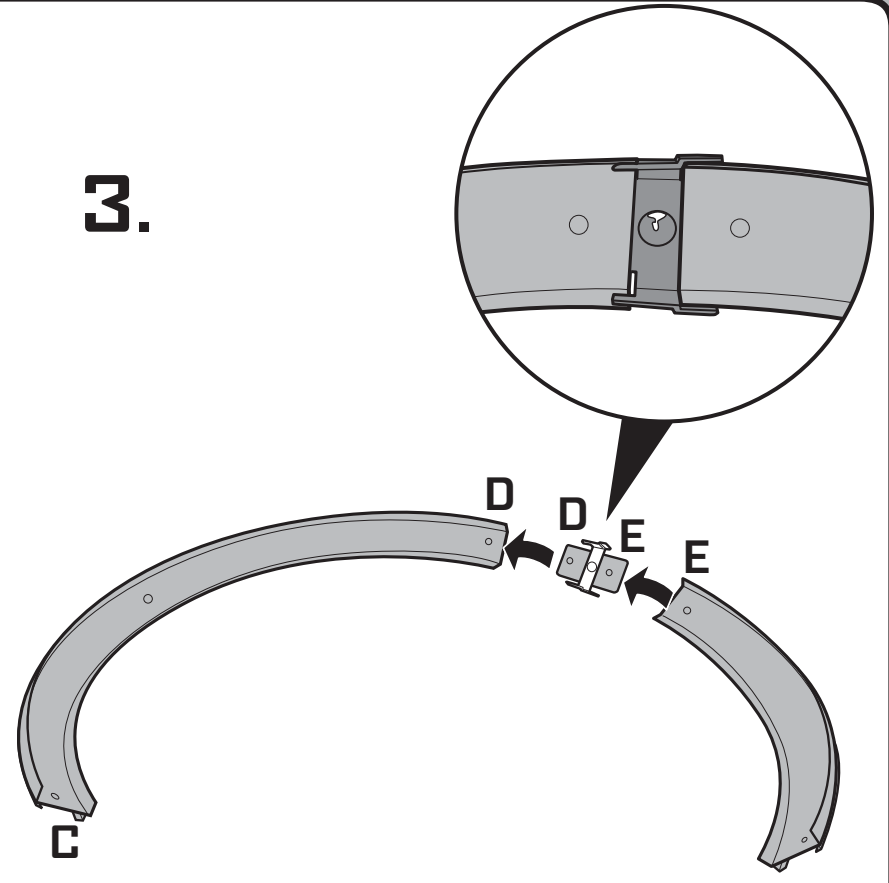
1.



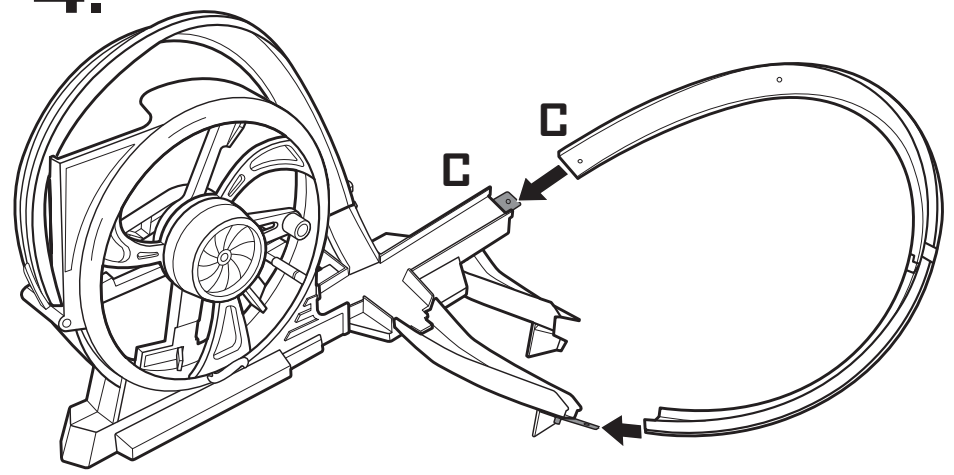
2.



3.



4.



5.

