

## BOOT LOCKIN'

### SET UP

A. CRANK CLOCKWISE

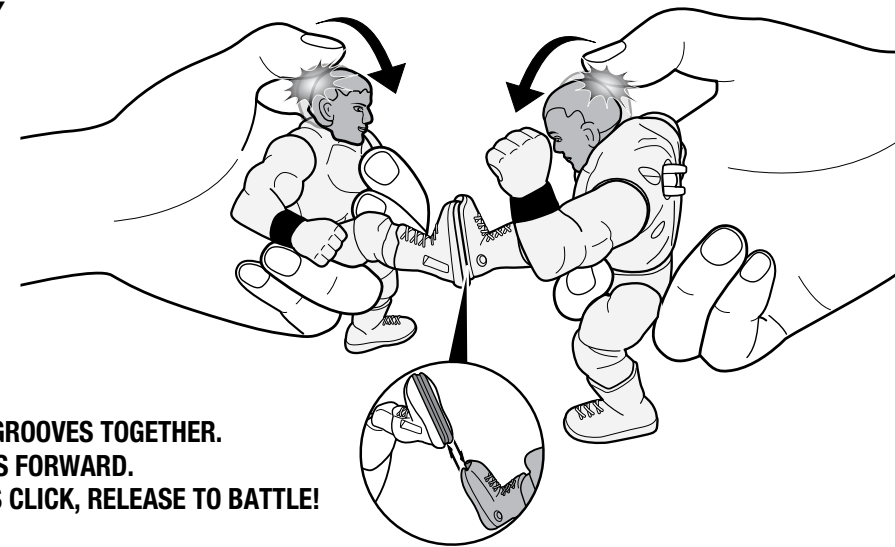


B. RESET HANDLE



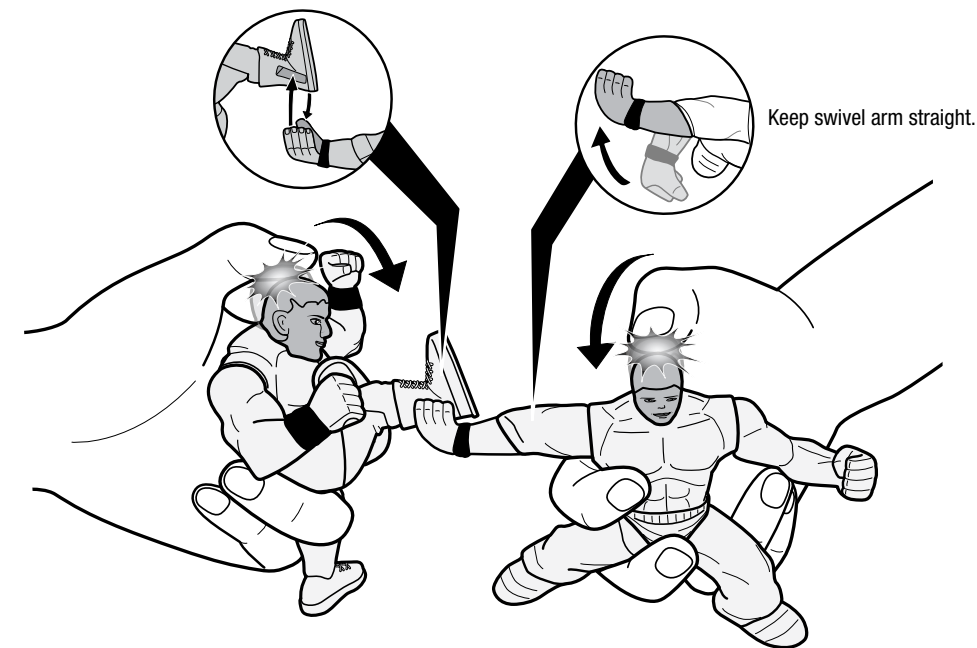
CLICK!

### TO PLAY



1. SLIDE FOOT GROOVES TOGETHER.
2. PRESS HEADS FORWARD.
3. WHEN HEADS CLICK, RELEASE TO BATTLE!

FOR MORE BATTLE OPTIONS, CONNECT HAND GRABBIN' AND BOOT LOCKIN' FIGURES!



Keep swivel arm straight.

All WWE programming, talent names, images, likenesses, slogans, wrestling moves, trademarks, logos and copyrights are the exclusive property of WWE and its subsidiaries. All other trademarks, logos and copyrights are the property of their respective owners. © 2013 WWE. All Rights Reserved.

©2013 Mattel. All Rights Reserved.

Mattel, Inc. 636 Girard Avenue, East Aurora, NY 14052, U.S.A. Consumer Relations 1-800-524-8697. Mattel U.K. Ltd., Vanwall Business Park, Maidenhead SL6 4UB. Helpline 01628 500303. Mattel Australia Pty., Ltd., Richmond, Victoria. 3121. Consumer Advisory Service - 1300 135 312. Mattel East Asia Ltd., Room 1106, South Tower, World Finance Centre, Harbour City, Tsimshatsui, HK, China. Diimport & Diedarkan Oleh: Mattel SEA Ptd Ltd.(993532-P) Lot 13.5, 13th Floor, Menara Lien Hoe, Persiaran Tropicana Golf Country Resort, 47410 PJ. Tel:03-78803817, Fax:03-78803867.

service.mattel.com

Y0243-0921  
Y7072-0921



## POWER SLAMMERS™

### INSTRUCTIONS

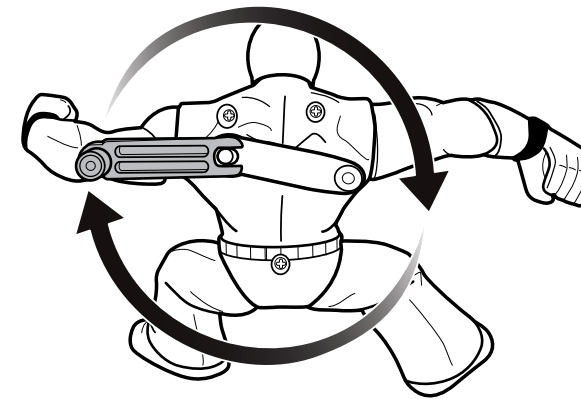
6+

Please keep these instructions for future reference as they contain important information.

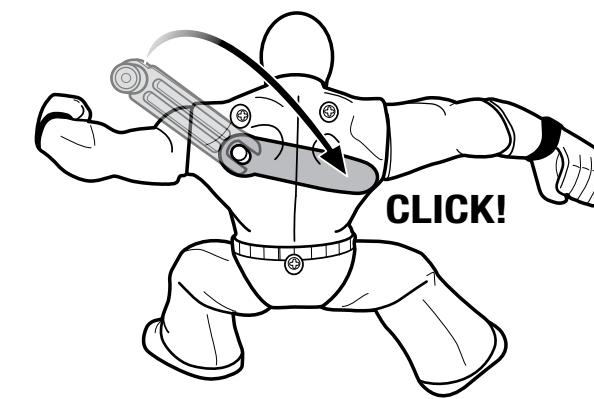
## HAND GRABBIN'

### SET UP

A. CRANK CLOCKWISE



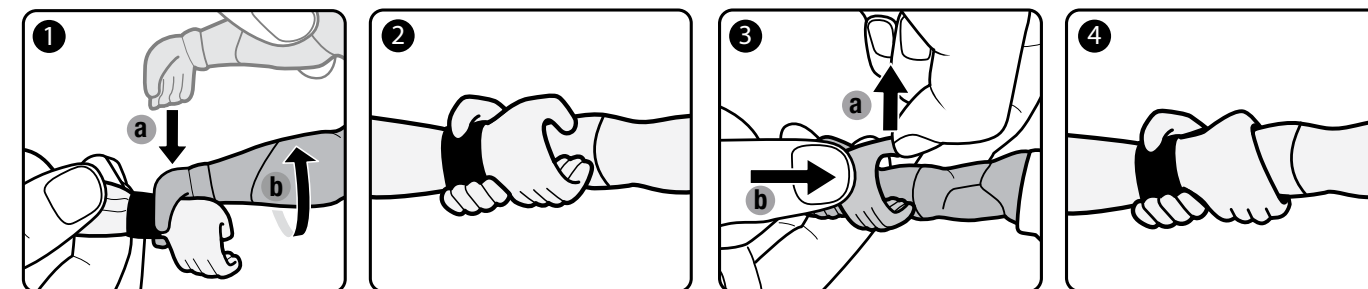
B. RESET HANDLE



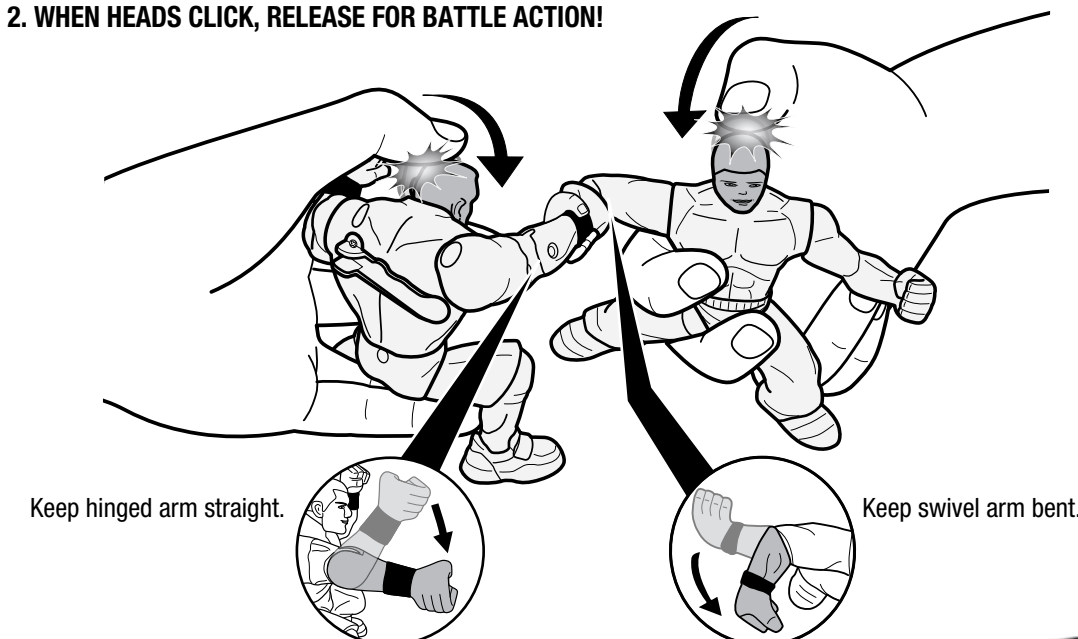
CLICK!

### TO PLAY

A. SNAP HANDS AROUND OPPONENT'S WRIST



- B. 1. PRESS HEADS FORWARD.
2. WHEN HEADS CLICK, RELEASE FOR BATTLE ACTION!



Keep hinged arm straight.

Keep swivel arm bent.

#### INSTRUCTION SHEET SPECIFICATIONS

Toy: WWE POWER SLAMMERS  
Toy No.: Y0243  
Part No.: 0920  
Trim Size: A4  
Folded Size: \_\_\_\_\_  
Type of Fold: \_\_\_\_\_  
# colors: One  
Colors: Black  
Paper Stock: White Offset  
Paper Weight: 70 lb.  
EDM No.: \_\_\_\_\_