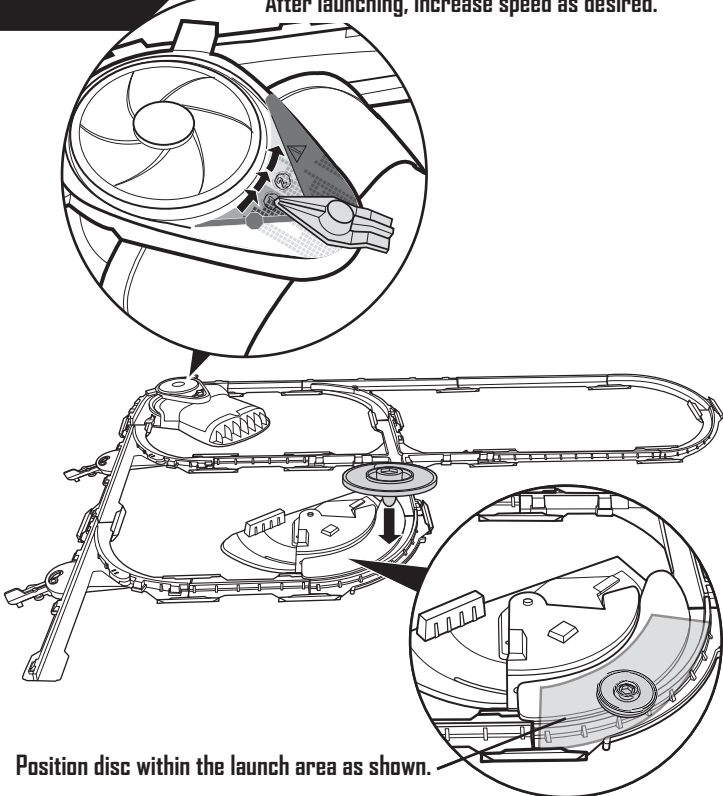


TO PLAY

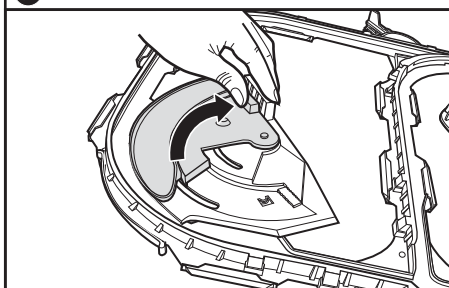
1. Load disc.



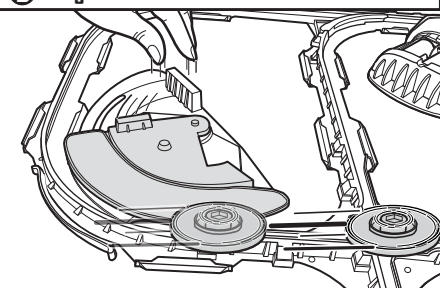
To launch discs, set power switch to I for best performance. After launching, increase speed as desired.

2.

a Pull tab back.

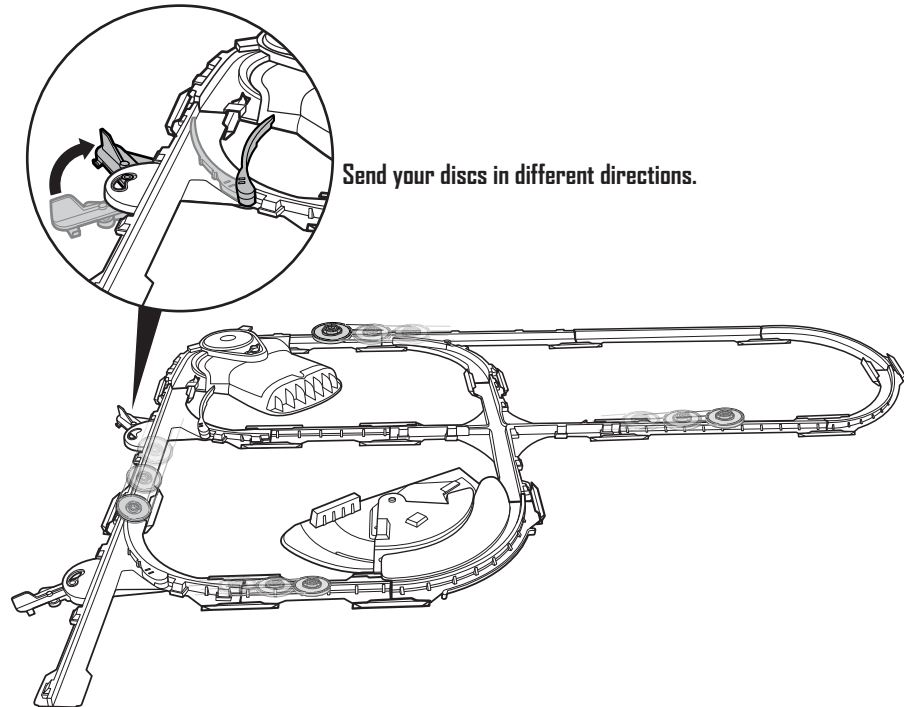


b Let go to launch.



Position disc within the launch area as shown.

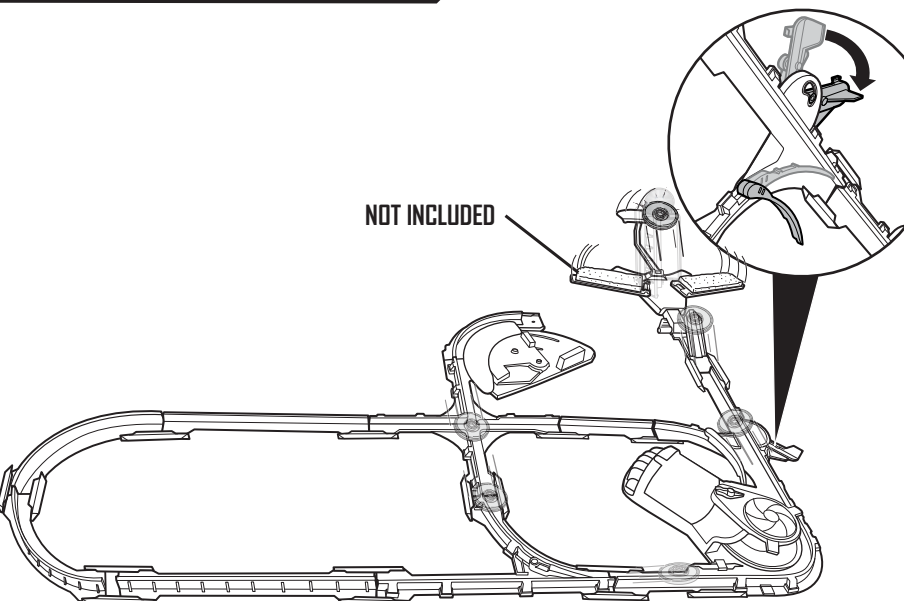
3. Launch more discs for more thrills!



Send your discs in different directions.

MORE WAYS TO PLAY

CONNECT WITH OTHER SPINSHOTZ™ SETS TO CREATE YOUR OWN TRACK DESIGNS.



NOT INCLUDED



SUPER BOOST SPINWAY™

INSTRUCTIONS

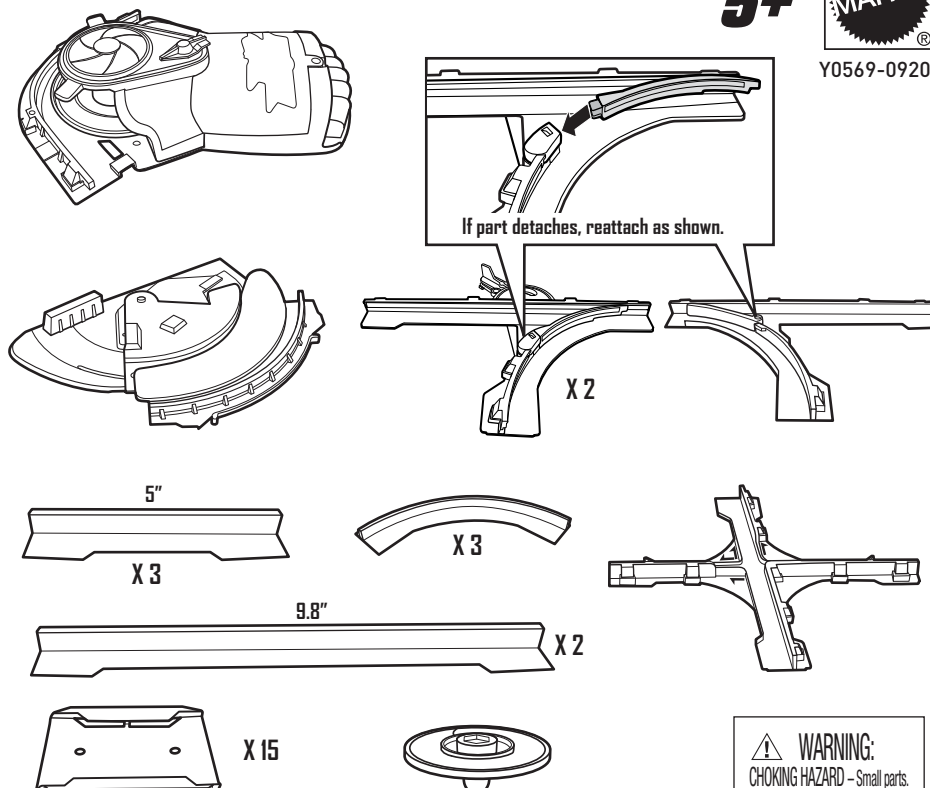
CONTENTS

Please keep these instructions for future reference as they contain important information.

5+



Y0569-0920



If part detaches, reattach as shown.

X 2

5"

X 3

X 3

9.8"

X 2

X 15

WARNING:
CHOKING HAZARD - Small parts.
Not for children under 3 years.

Requires 3-C alkaline batteries, not included. Dispose of batteries safely. This product contains a magnet. Do not use around items that are sensitive to or affected by magnetic fields.

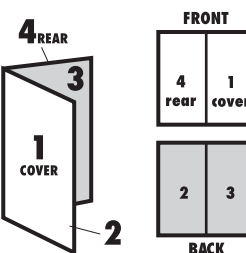
©2013 Mattel. All Rights Reserved. Mattel, Inc., 636 Grand Avenue, East Aurora, NY 14052, U.S.A. Consumer Relations 1-800-524-8697. • Mattel Canada Inc., Mississauga, Ontario L5R 3W2. You may call us free at 1-800-524-8697. • Mattel U.K. Ltd., Vauxhall Business Park, Maidenhead SL6 4UB. Helpline 01628 500303. • Mattel Australia Pty., Ltd., Richmond, Victoria, 3121 Consumer Advisory Service - 1300 135 312 Mattel East Asia Ltd., Room 1106, South Tower, World Finance Centre, Harbour City, Tsimshatsui, HK, China. • Dlimport & Diedarkan Oleh: Mattel SEA Ptd Ltd.(993532-P) Lot 13.5, 13th Floor, Menara Lien Hoe, Persiaran Tropicana Golf Country Resort, 47410 PJ. Tel:03-78803817, Fax:03-78803867, service.mattel.com

INSTRUCTION SHEET SPECIFICATIONS

Toy: HW SPINSHOTZ SPRG PLAYSET
Toy No.: Y0569
Part No.: 0920
Trim Size: 16.5"W x 8.5" H
Folded Size: 5.5" W x 8.5" H
Type of Fold: Single
colors: One
Colors: Black
Paper Stock: White Offset
Paper Weight: 70 lb.
EDM No.:

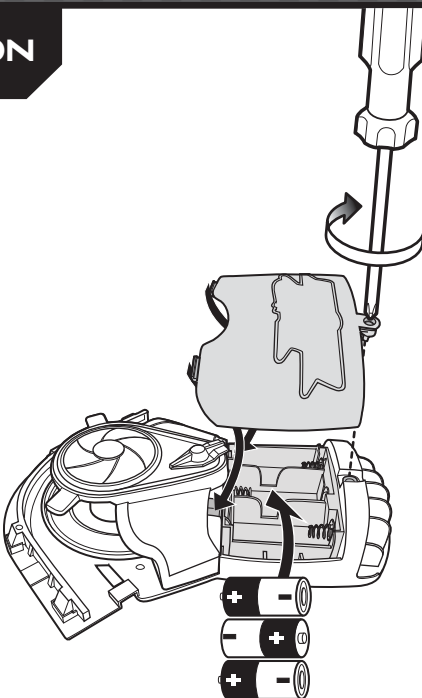


2 PANEL Folding Dummy



BATTERY INSTALLATION

- Unscrew the battery cover with a Phillips head screwdriver (not included).
- Install 3 "C" alkaline batteries in the orientation (+/-) shown.
- Replace battery cover and tighten screw.
- Replace batteries when booster can no longer propel the disc through the track set.



BATTERY SAFETY INFORMATION

In exceptional circumstances batteries may leak fluids that can cause a chemical burn injury or ruin your product. To avoid battery leakage:

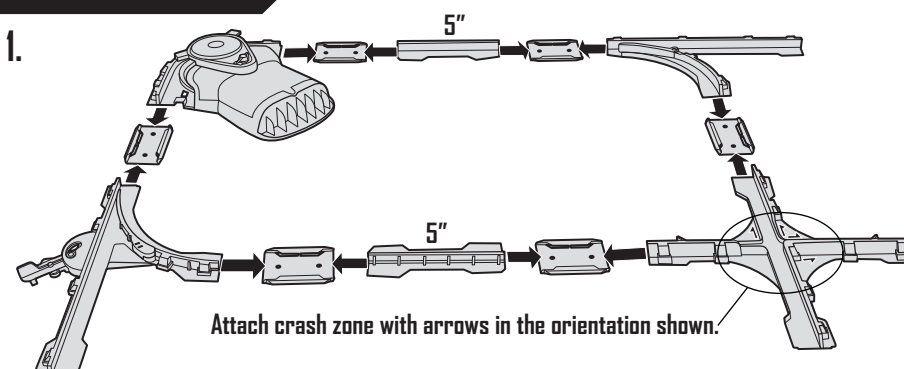
- Non-rechargeable batteries are not to be recharged.
- Rechargeable batteries are to be removed from the product before being charged.
- Rechargeable batteries are only to be charged under adult supervision.
- Do not mix alkaline, standard (carbon-zinc), or rechargeable (nickel-cadmium) batteries.
- Do not mix old and new batteries.
- Only batteries of the same or equivalent type as recommended are to be used.
- Batteries are to be inserted with the correct polarity.
- Exhausted batteries are to be removed from the product.
- The supply terminals are not to be short-circuited.
- Dispose of battery(ies) safely.
- Do not dispose of this product in a fire. The batteries inside may explode or leak.



Protect the environment by not disposing of this product with household waste [2002/96/EC]. Check your local authority for recycling advice and facilities.

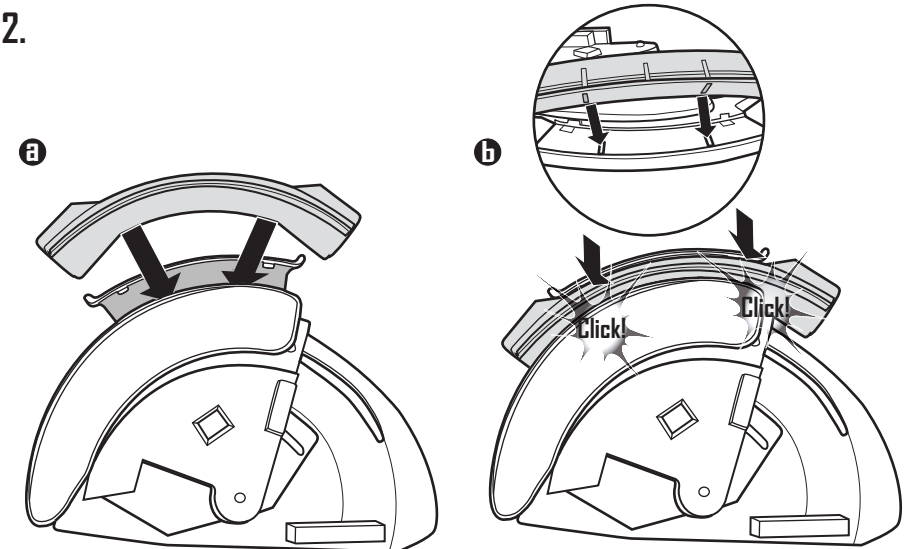
ASSEMBLY

1.

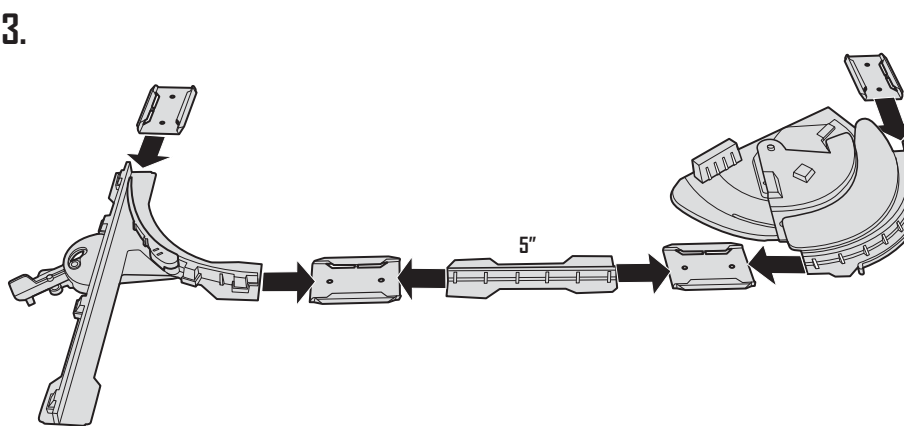


Attach crash zone with arrows in the orientation shown.

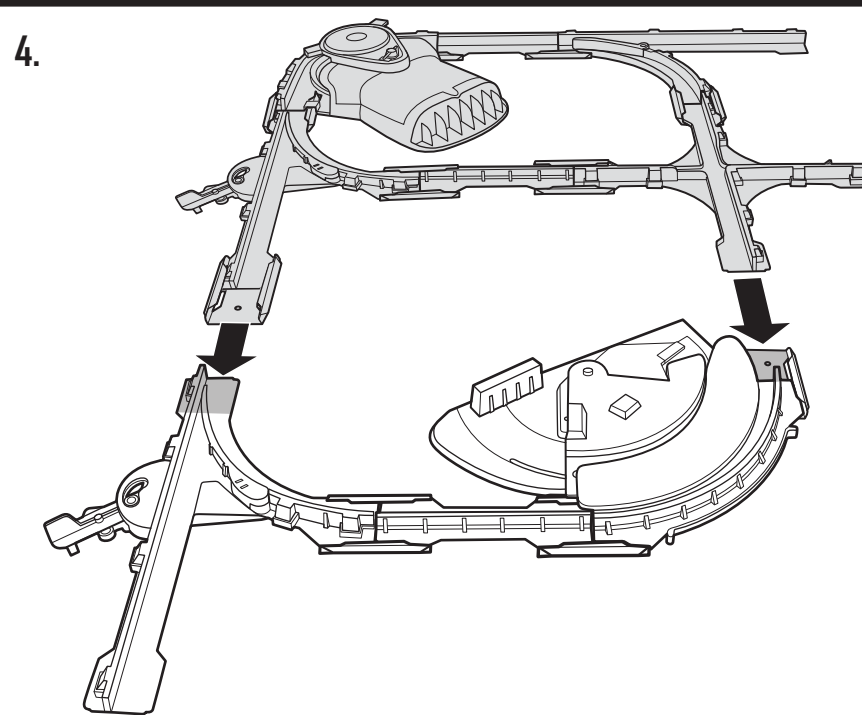
2.



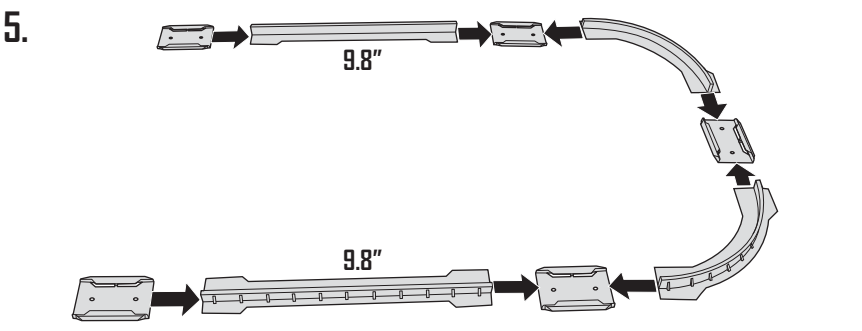
3.



4.



5.



6.

