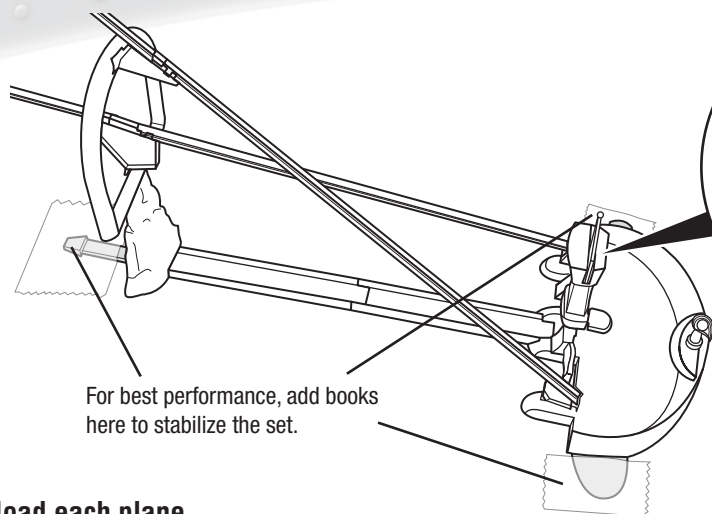


INSTRUCTION SHEET SPECIFICATIONS	
Toy No.:	AIR RACE TRACK SET
Part No.:	Y0996
Trim Size:	A3
Folded Size:	according to
Type of Fold:	One
Colors:	Black
Paper Stock:	White Offset
Paper Weight:	70 lb
EDM No.:	001a

TO PLAY

1



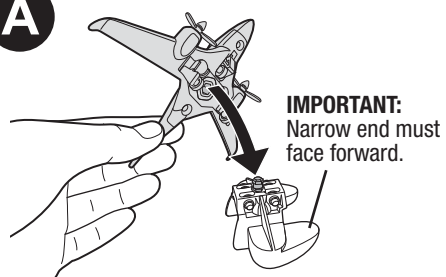
For best performance, add books here to stabilize the set.

Push button to center the flag before the race.

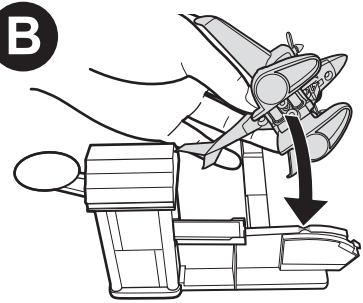
2

Connect and load each plane.

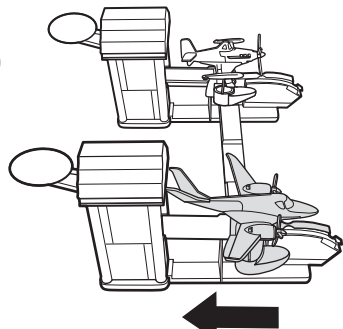
A



B

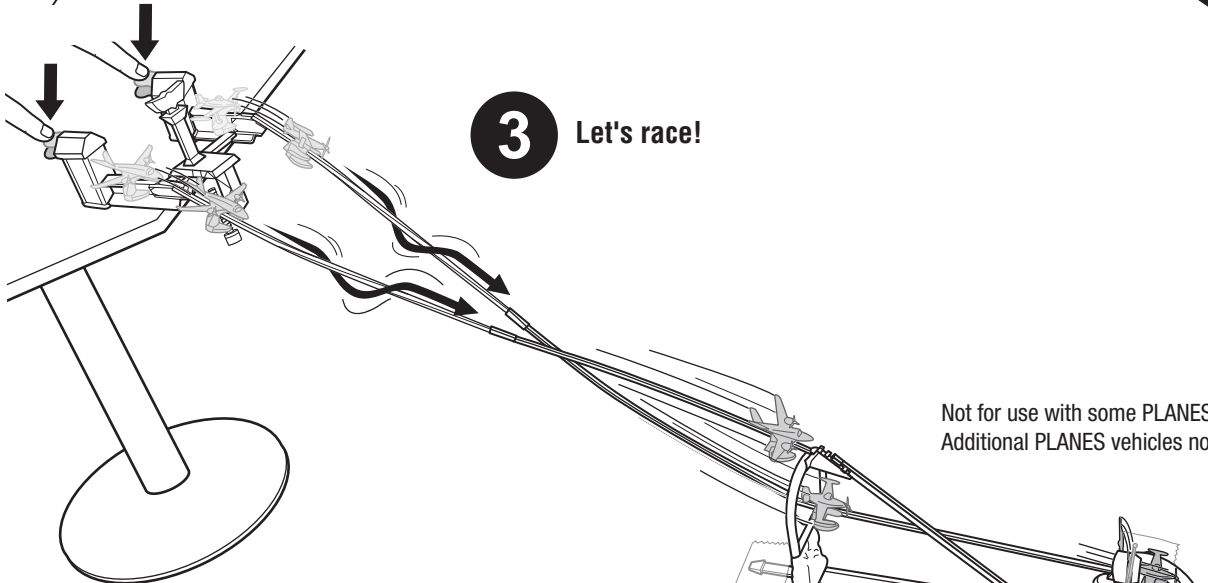


C



3

Let's race!

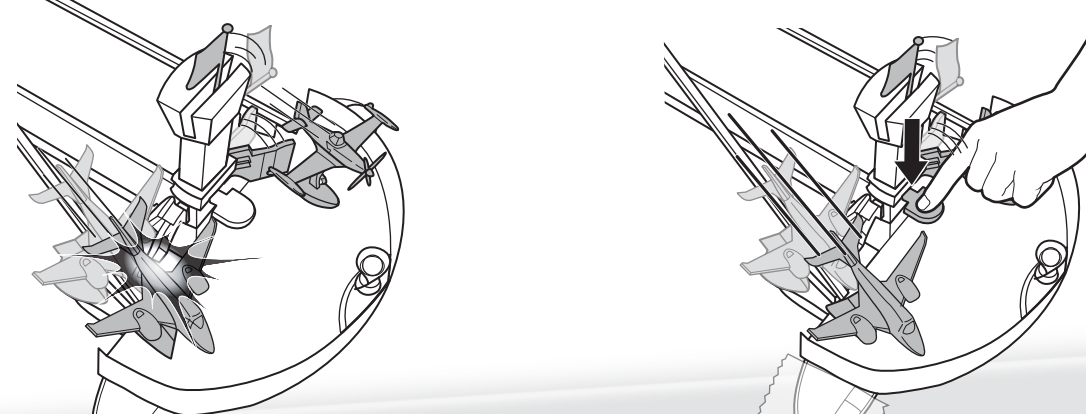


4

Winner triggers the checkered flag!

5

Push button to release plane.

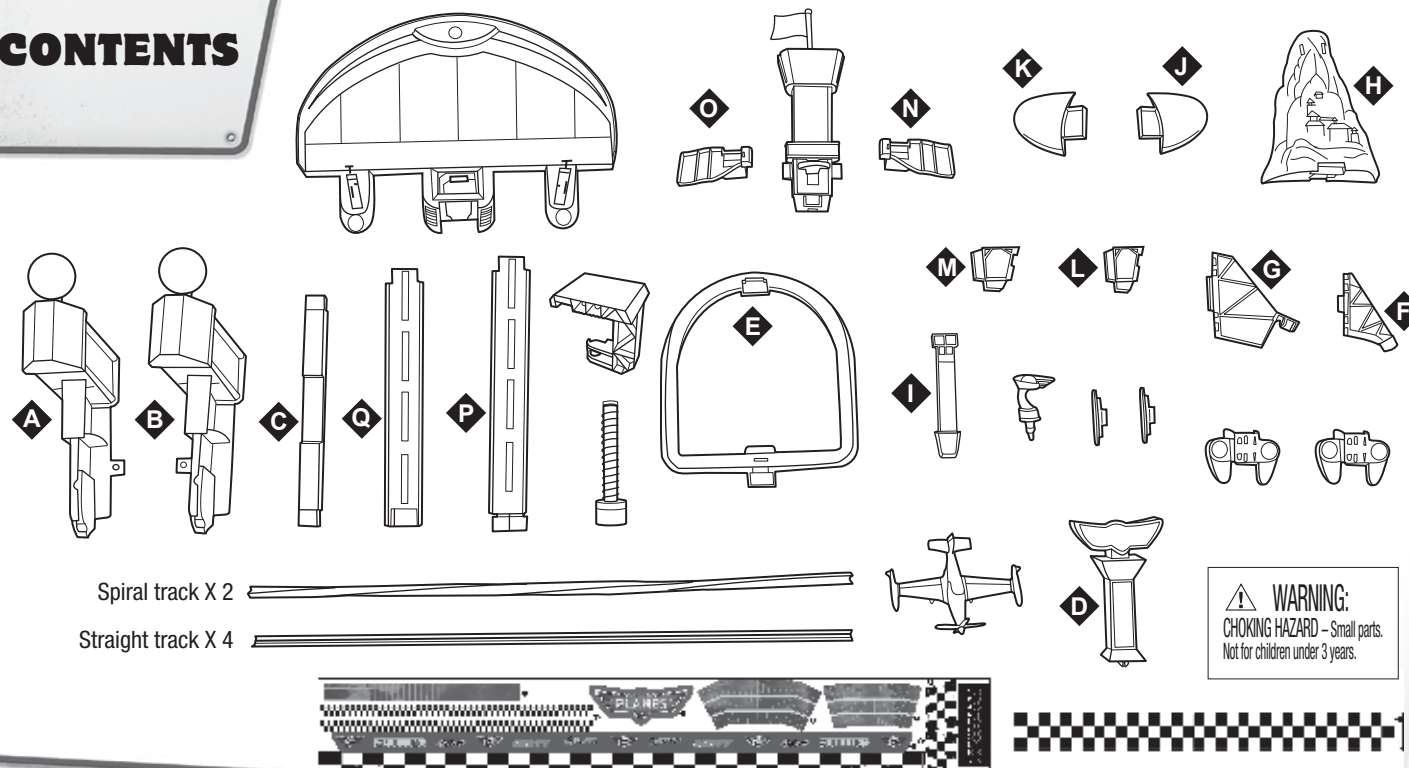


SKY TRACK CHALLENGE™ TRACK SET

5+

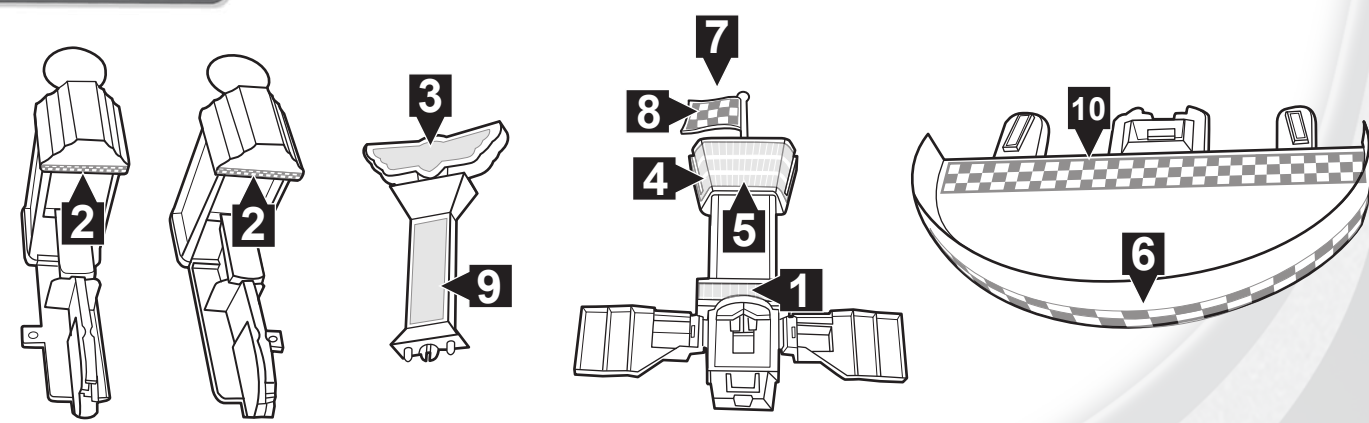
INSTRUCTIONS

CONTENTS



APPLY LABELS

Helpful Hint: Apply labels before assembly by number as indicated.



©2013 Mattel. All Rights Reserved.
Mattel, Inc., 636 Girard Avenue, East Aurora, NY 14052, U.S.A. Consumer Relations 1-800-524-8697. Mattel U.K. Ltd., Vanwall Business Park, Maidenhead SL6 4UB. Helpline 01628 500303. Mattel Australia Pty. Ltd., Richmond, Victoria, 3121 Consumer Advisory Service - 1300 135 312. Mattel East Asia Ltd., Room 1106, South Tower, World Finance Centre, Harbour City, Tsimshatsui, HK, China. Diimport & Diedarkan Oleh: Mattel SEA Ptd Ltd (993532-P) Lot 13.5, 13th Floor, Menara Lien Hoe, Persiaran Tropicana Golf Country Resort, 47410 PJ. Tel:03-78803817, Fax:03-78803867.

© Disney

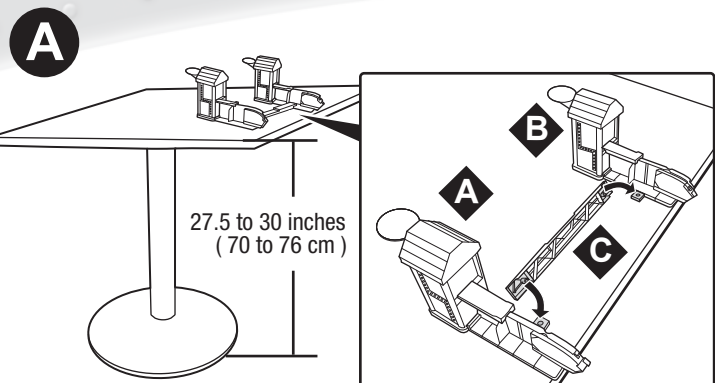
service.mattel.com

Y0996-0920

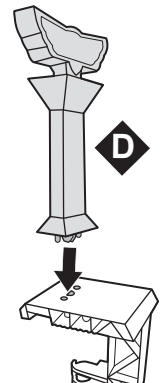


ASSEMBLY

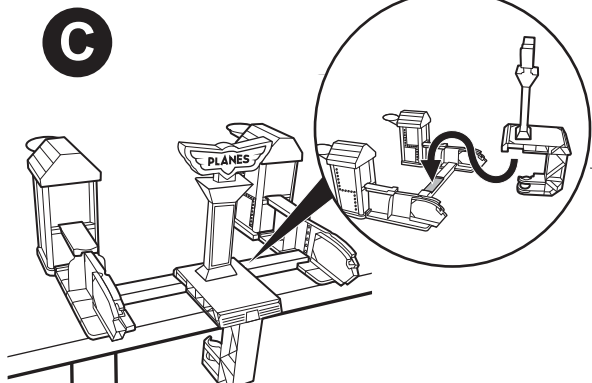
1



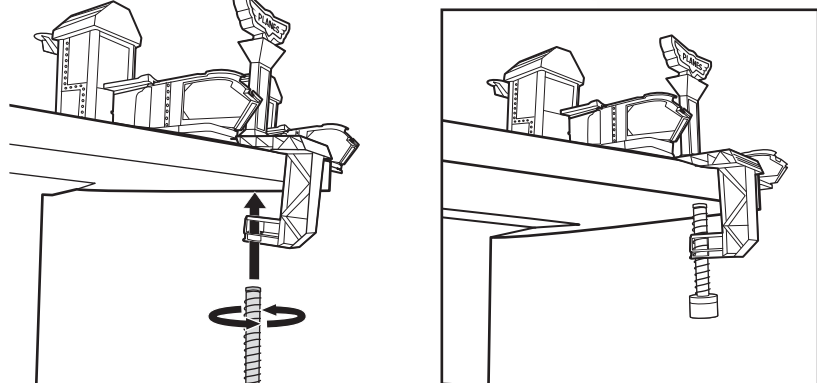
B



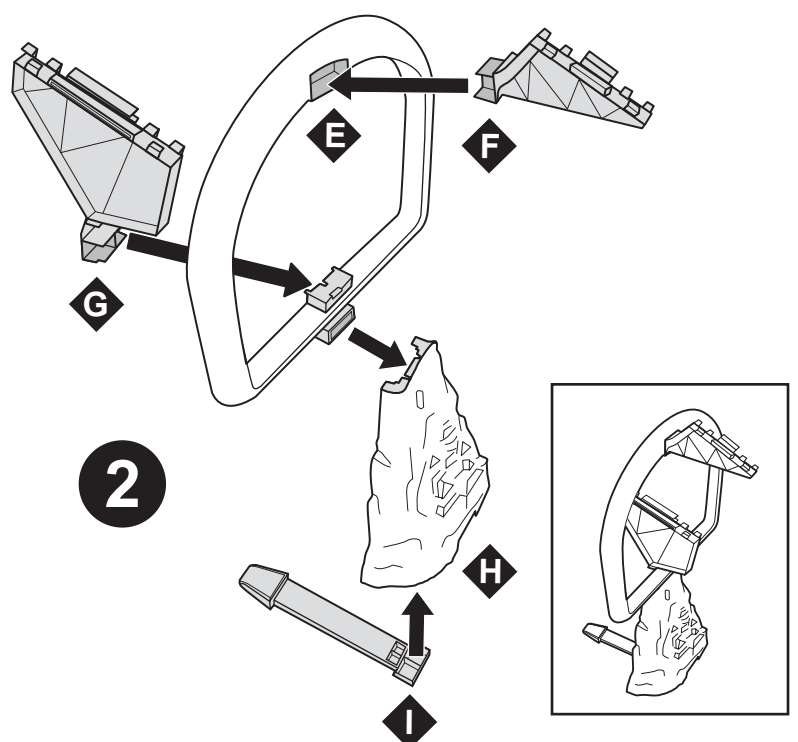
C



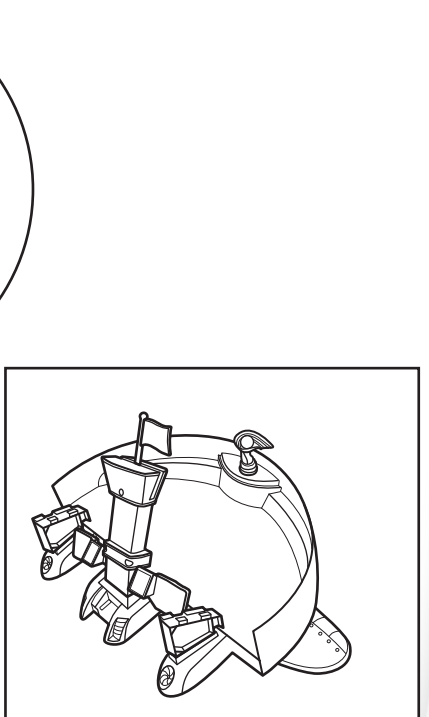
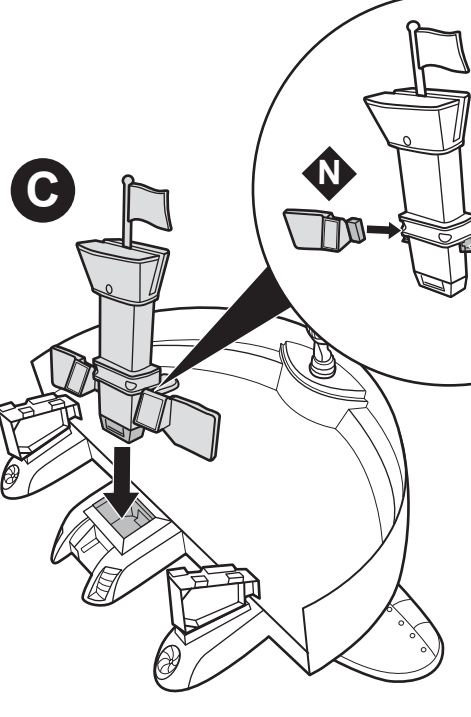
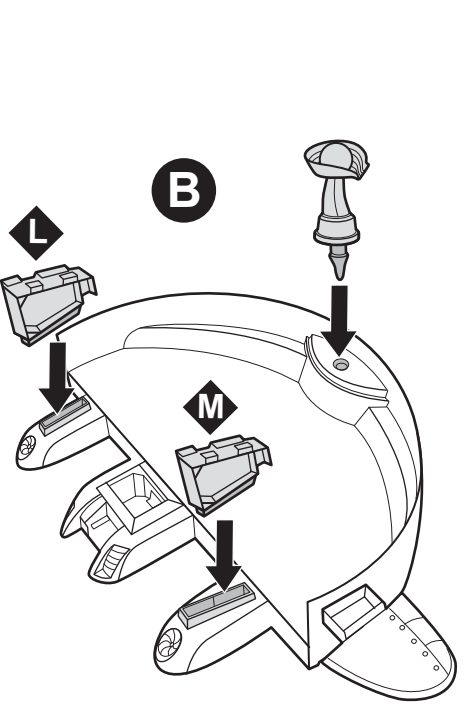
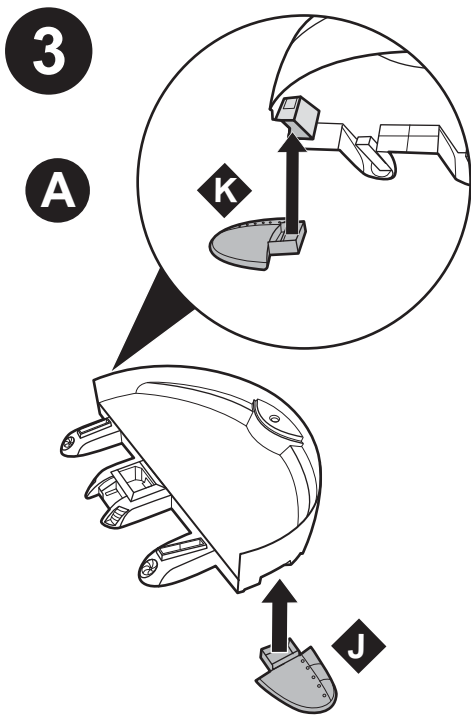
D



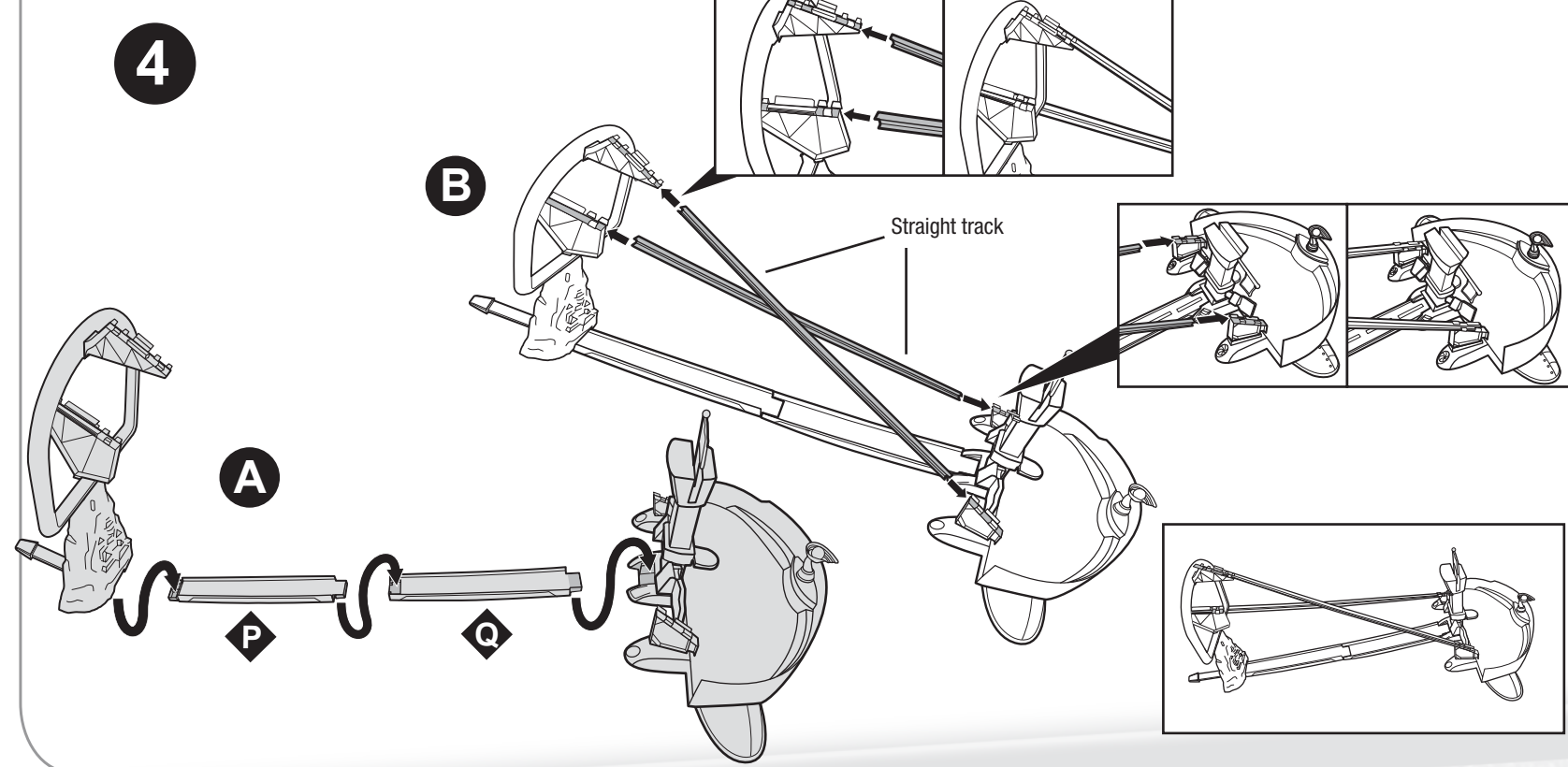
2



3



4



5

