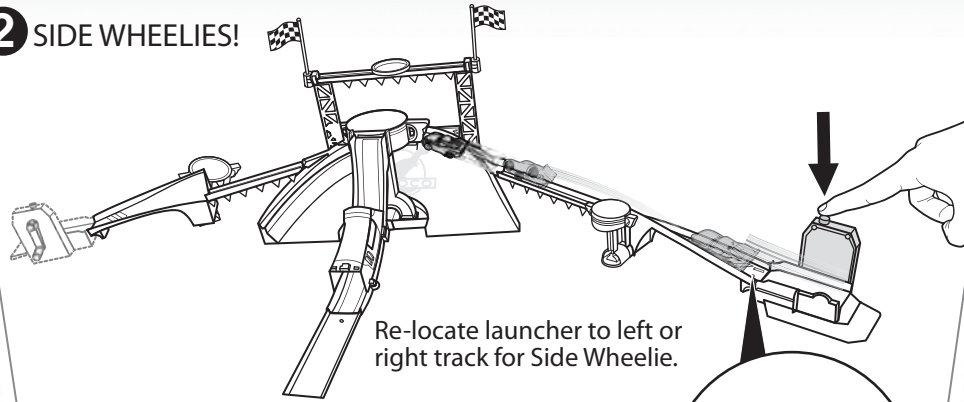
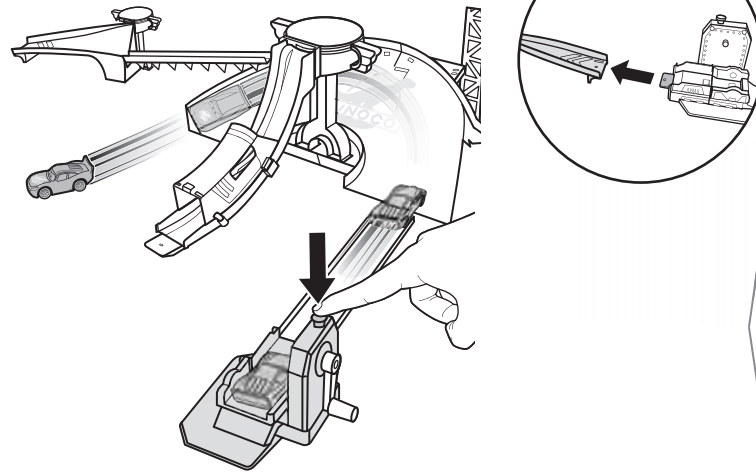


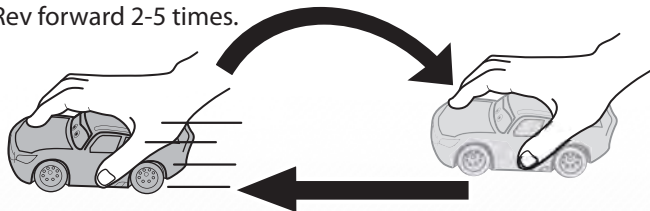
**2** SIDE WHEELIES!



**3**



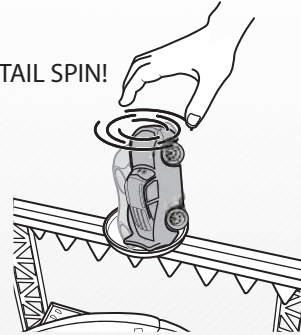
**4 a** Rev forward 2-5 times.



**b** NOSE SPIN!

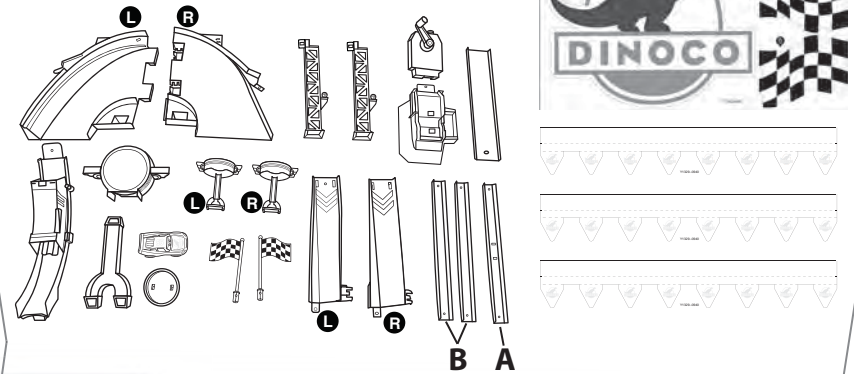


**c** TAIL SPIN!



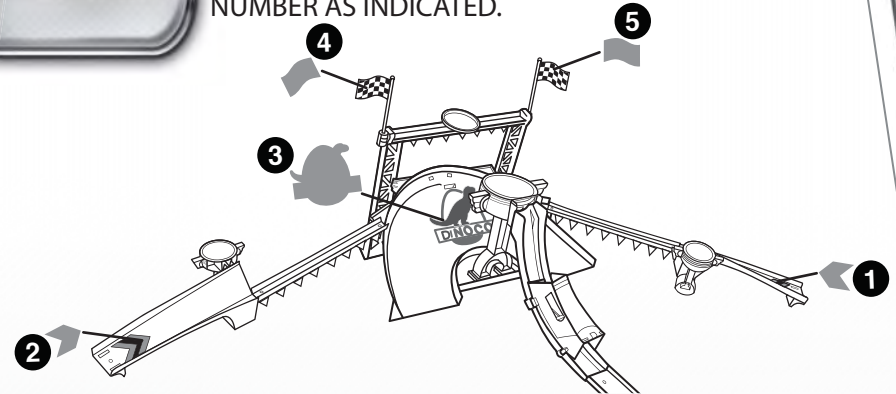
**DINOCO STUNT SHOW  
STUNT SET  
INSTRUCTIONS**

**CONTENTS**



**APPLY LABELS**

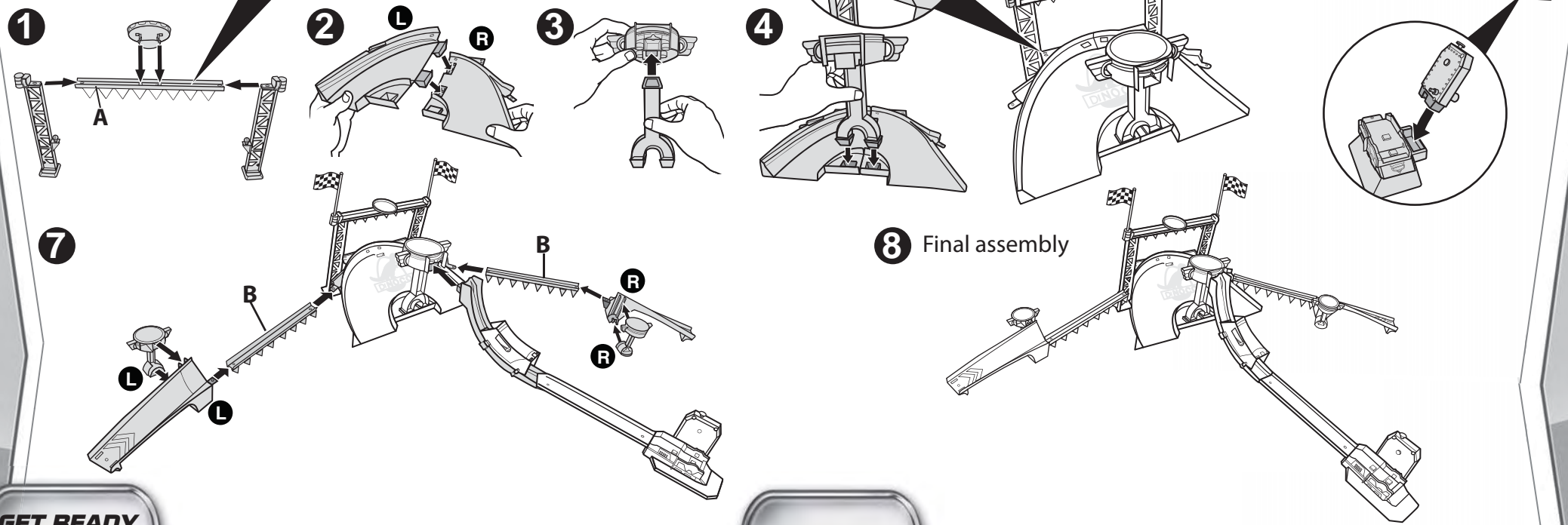
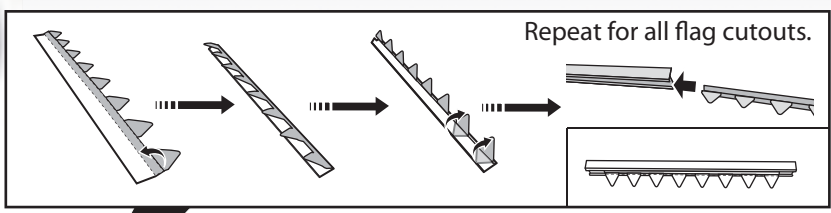
HELPFUL HINT: APPLY LABELS BEFORE ASSEMBLY BY NUMBER AS INDICATED.



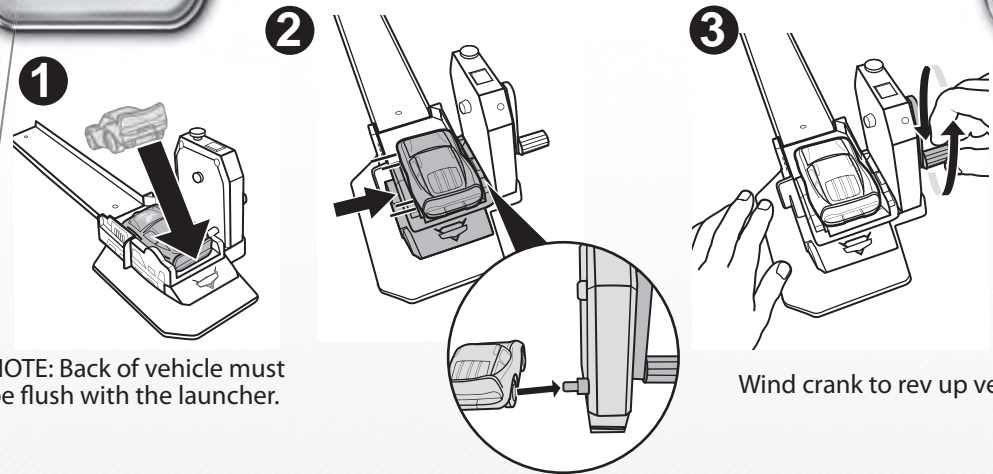
©2012 Mattel. All Rights Reserved.  
 Mattel, Inc., 636 Girard Avenue, East Aurora, NY 14052, U.S.A. Consumer Relations 1-800-524-8697. Mattel U.K. Ltd., Vanwall Business Park, Maidenhead SL6 4UB. Helpline 01628 500303. Mattel Australia Pty., Ltd., Richmond, Victoria. 3121. Consumer Advisory Service - 1300 135 312. Mattel East Asia Ltd., Room 1106, South Tower, World Finance Centre, Harbour City, Tsimshatsui, HK, China. Diimport & Diedarkan Oleh: Mattel SEA Ptd Ltd.(993532-P) Lot 13.5, 13th Floor, Menara Lien Hoe, Persiaran Tropicana Golf Country Resort, 47410 PJ. Tel:03-78803817, Fax:03-78803867.



**ASSEMBLY**



**GET READY TO PLAY**



**TO PLAY**

