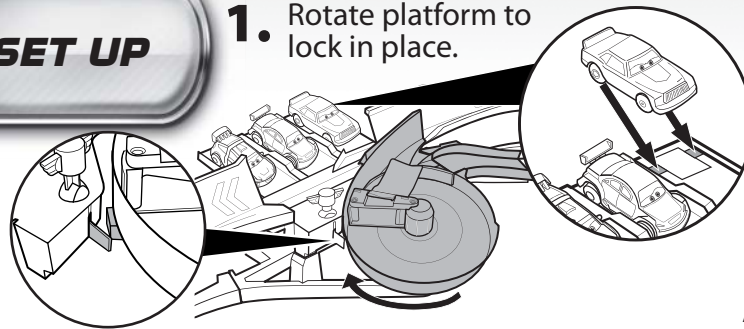


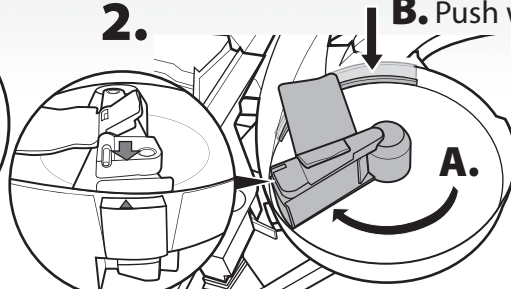
SET UP

1. Rotate platform to lock in place.



2.

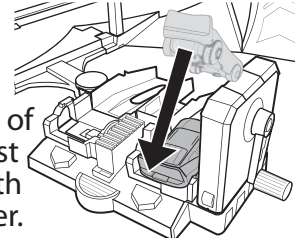
- A. Push wall down.



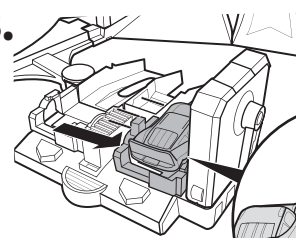
Align arrow as shown.

3. A.

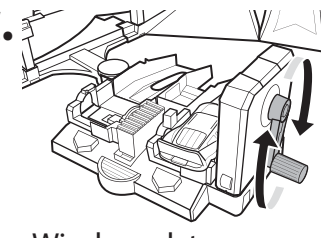
NOTE: Back of vehicle must be flush with the launcher.



B.



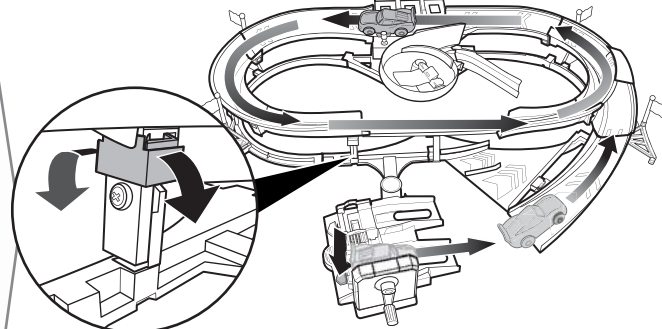
C.



Wind crank to rev up vehicle.

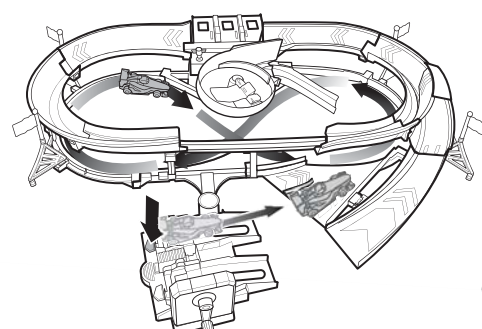
TO PLAY

1. Launch for oval track

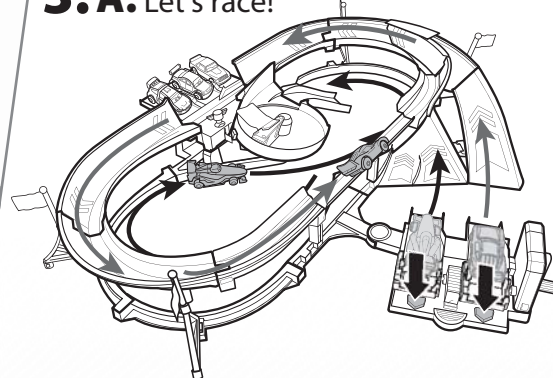


Wheelie performance of vehicles will vary. Adjust track angle if necessary.

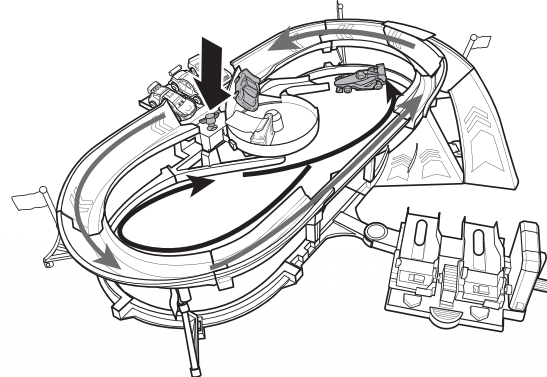
2. Launch for figure 8 track



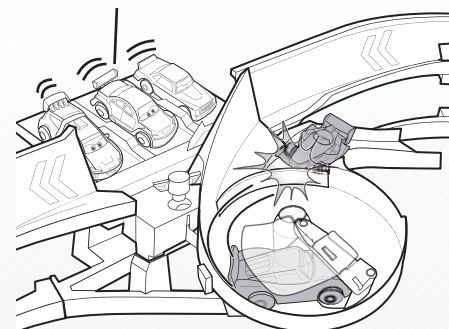
3. A. Let's race!



- B. Press button after 1 or 2 laps. First one into the Winner's Circle wins!

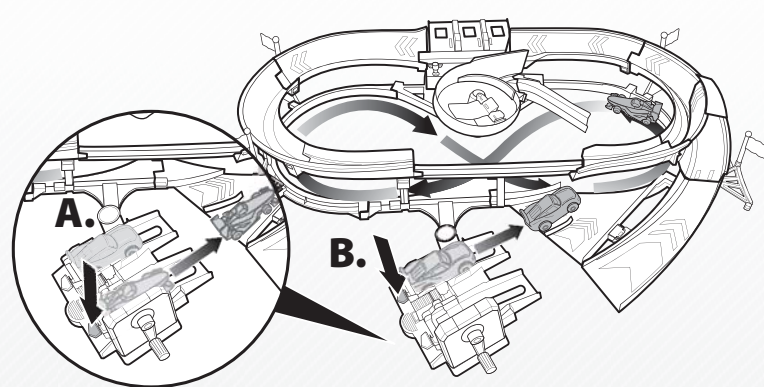


- C. Fans "cheer" and move up and down!



Winner's Circle

4. NOTE: To race on the same track, cars must be launched one after the other.



ADDITIONAL VEHICLES NOT INCLUDED.



DOUBLE DECKER SPEEDWAY

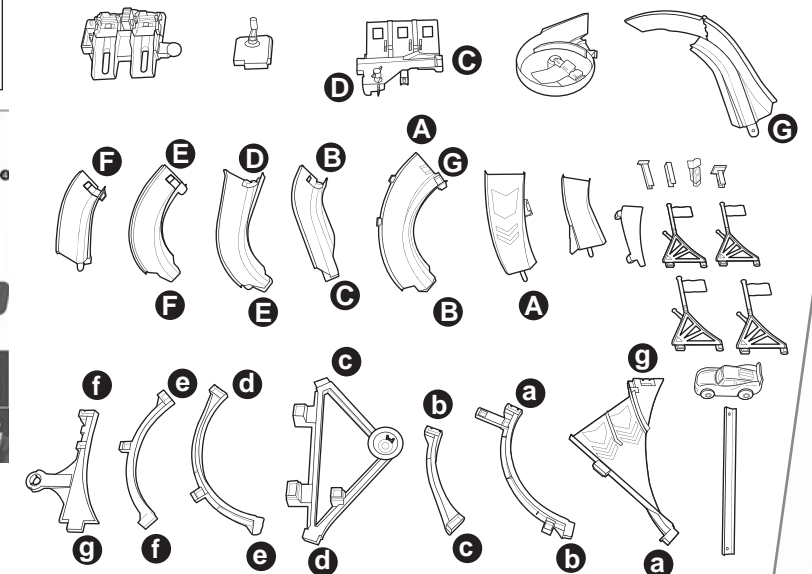
INSTRUCTIONS

CONTENTS

WARNING:
CHOKING HAZARD - Small parts.
Not for children under 3 years.

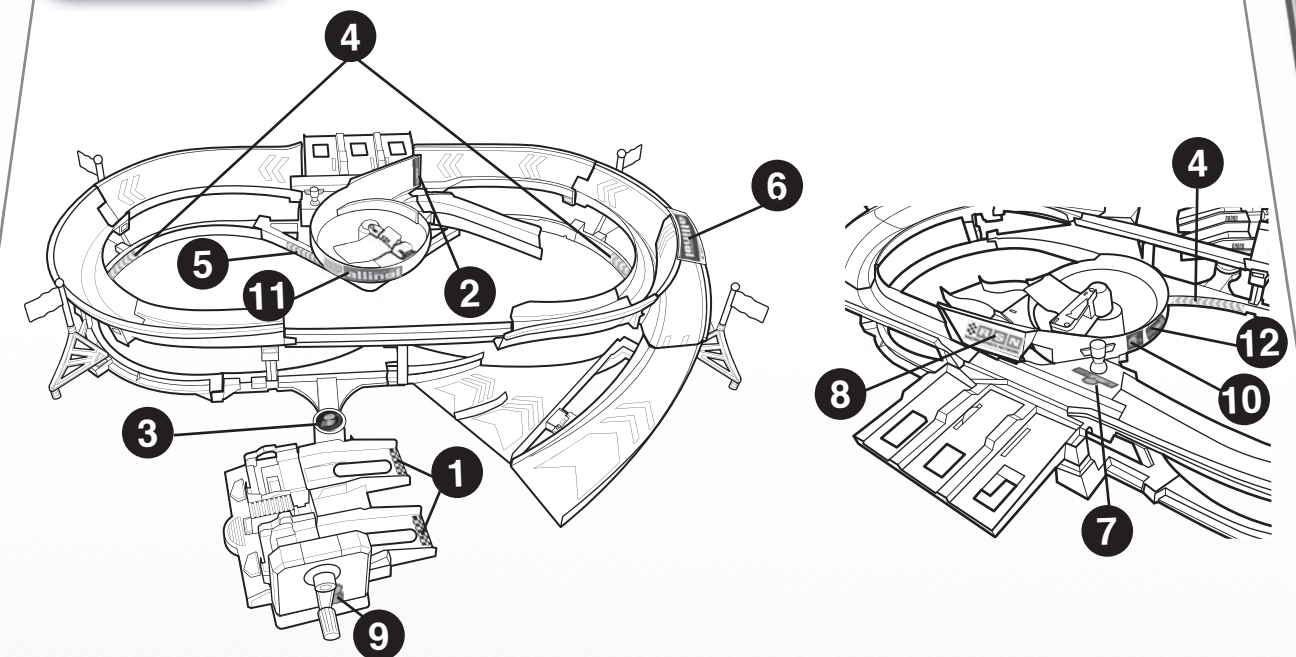


LABEL SHEET



APPLY LABELS

HELPFUL HINT: APPLY LABELS BEFORE ASSEMBLY BY NUMBER AS INDICATED.



©2013 Mattel. All Rights Reserved.

Mattel, Inc., 636 Girard Avenue, East Aurora, NY 14052, U.S.A. Consumer Relations 1-800-524-8697. Mattel U.K. Ltd., Vanwall Business Park, Maidenhead SL6 4UB. Helpline 01628 500303. Mattel Australia Pty., Ltd., Richmond, Victoria. 3121. Consumer Advisory Service - 1300 135 312. Mattel East Asia Ltd., Room 1106, South Tower, World Finance Centre, Harbour City, Tsimshatsui, HK, China. Diimport & Diedarkan Oleh: Mattel SEA Ptd Ltd.(993532-P) Lot 13.5, 13th Floor, Menara Lien Hoe, Persiaran Tropicana Golf Country Resort, 47410 PJ. Tel:03-78803817, Fax:03-78803867.

© Disney/Pixar

www.disney.com/cars

service.mattel.com

Y1331-0920



ASSEMBLY

1.

2.

3.

4.

5.

6.

7.

8.

9.

10.

A.

Pull small tab out.

B.

Push down and turn to lock in place.

IMPORTANT: Make sure the small tab goes into the slot under the Winner's Circle as shown.

11.

12.

A.

B.