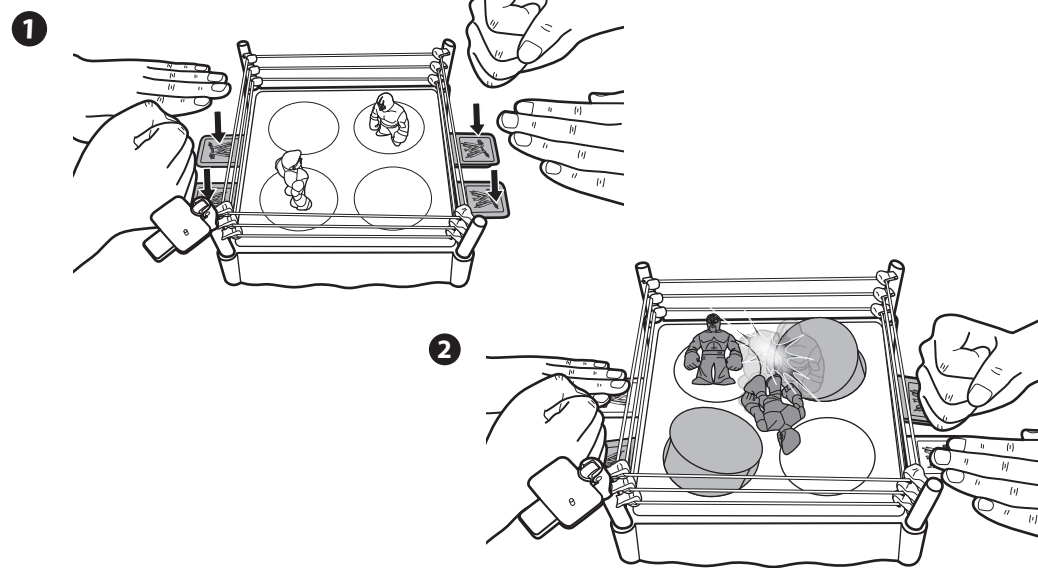
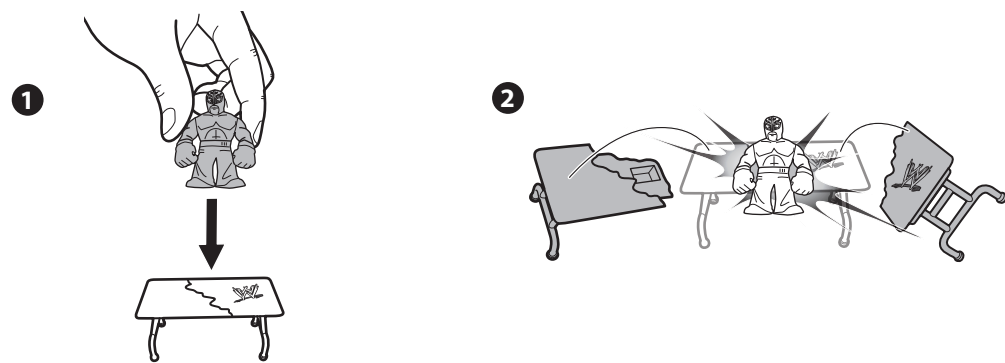


TO PLAY 3



TO PLAY 4



All WWE programming, talent names, images, likenesses, slogans, wrestling moves, trademarks, logos and copyrights are the exclusive property of WWE and its subsidiaries. All other trademarks, logos and copyrights are the property of their respective owners. © 2012 WWE. All Rights Reserved.

©2012 Mattel. All Rights Reserved.
Mattel, Inc. 636 Girard Avenue, East Aurora, NY 14052, U.S.A. Consumer Relations 1-800-524-8697. Mattel U.K. Ltd., Vanwall Business Park, Maidenhead SL6 4UB. Helpline 01628 500303. Mattel Australia Pty., Ltd., Richmond, Victoria. 3121. Consumer Advisory Service - 1300 135 312. Mattel East Asia Ltd., Room 1106, South Tower, World Finance Centre, Harbour City, Tsimshatsui, HK, China. Diimport & Diedarkan Oleh: Mattel SEA Ptd Ltd.(993532-P) Lot 13.5, 13th Floor, Menara Lien Hoe, Persiaran Tropicana Golf Country Resort, 47410 PJ. Tel:03-78803817, Fax:03-78803867.

service.mattel.com

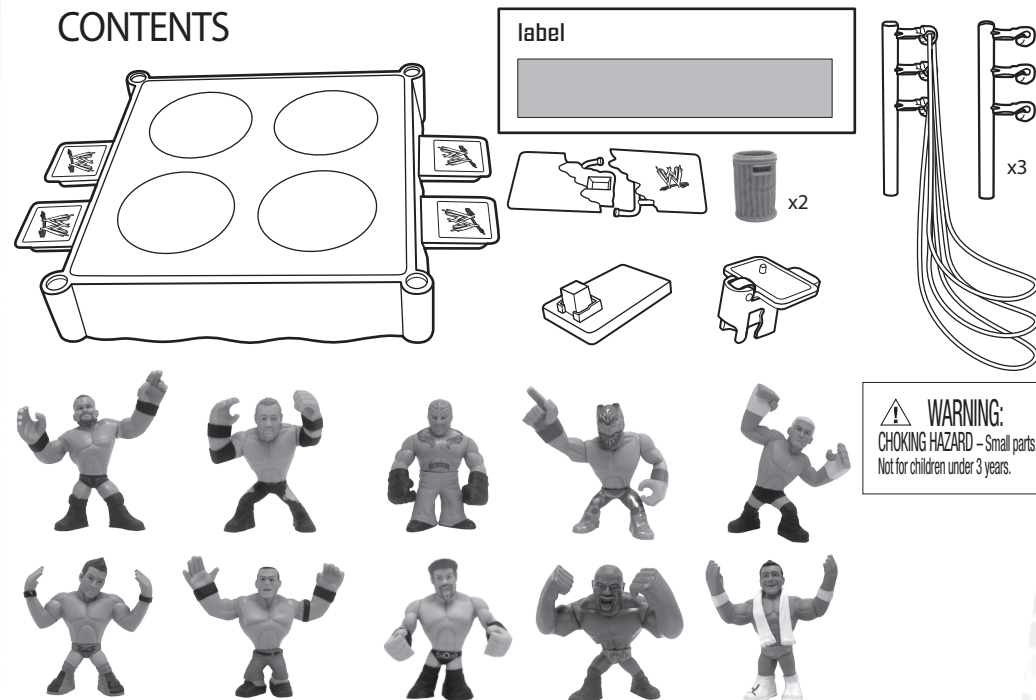


BLAST & BASH BATTLE™ RING

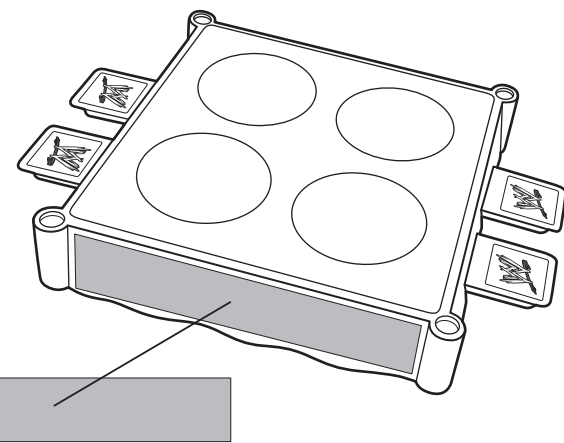
INSTRUCTIONS 3+

Please keep these instructions for future reference as they contain important information.

CONTENTS



PASTE LABEL

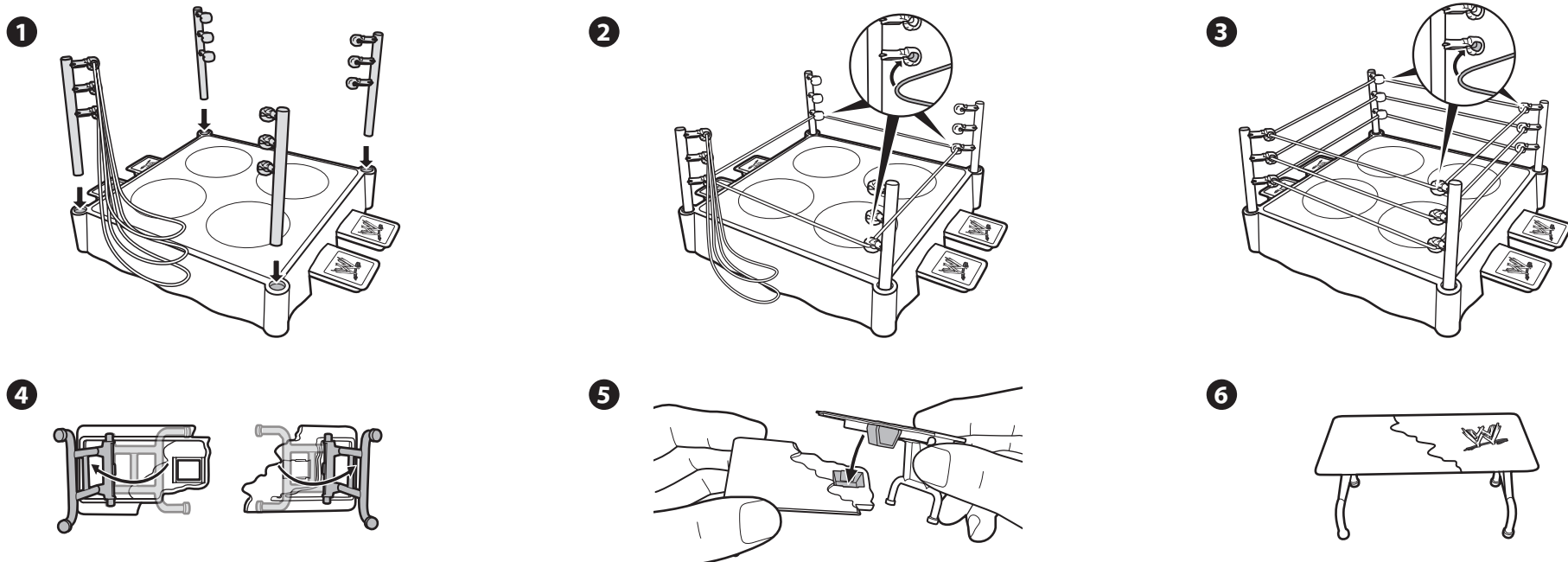


INSTRUCTION SHEET SPECIFICATIONS

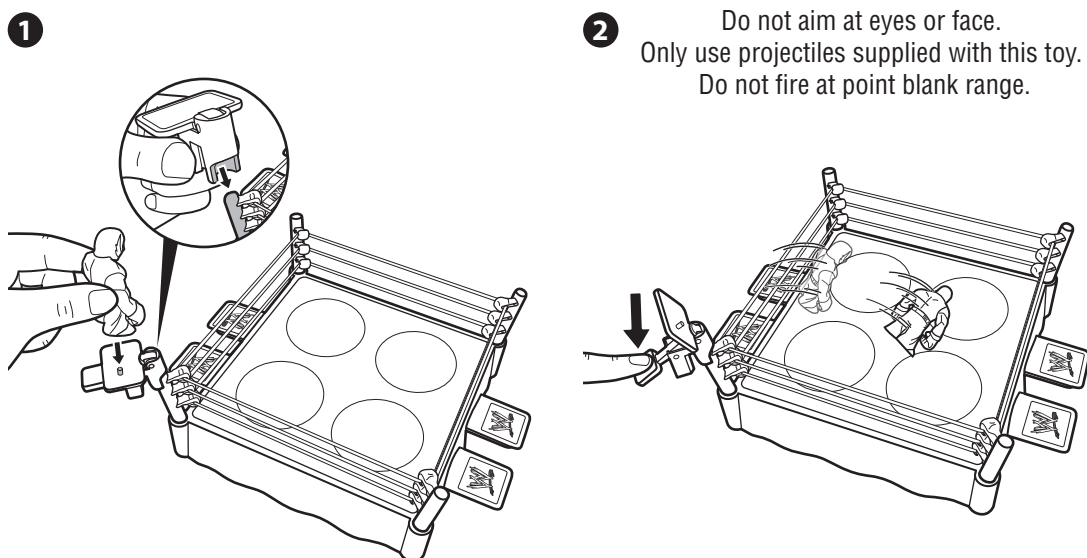
Toy:	BLAST & BASH BATTLE™ RING
Toy No.:	Y2857
Part No.:	0920
Trim Size:	A4
Folded Size:	A5
Type of Fold:	
# colors:	One
Colors:	Black
Paper Stock:	White Offset
Paper Weight:	70 lb.
EDM No.:	

WARNING:
CHOKING HAZARD - Small parts.
Not for children under 3 years.

ASSEMBLY



TO PLAY 1



TO PLAY 2

