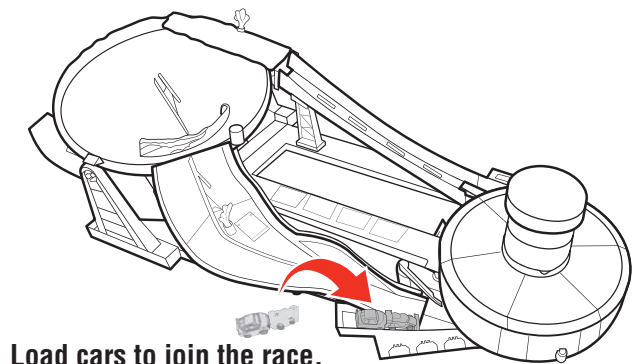


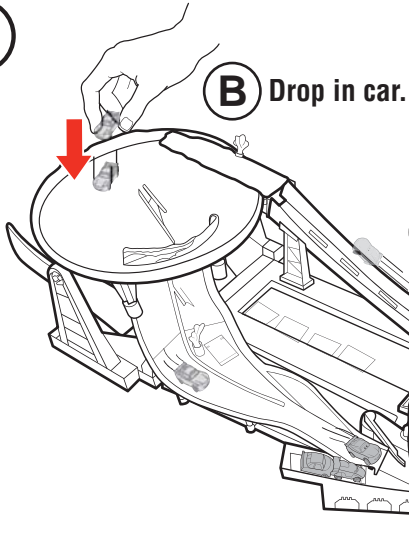
3 / PLAY

1



Additional vehicles not included.
Not for use with some Cars
Micro Drifters™ vehicles.

2

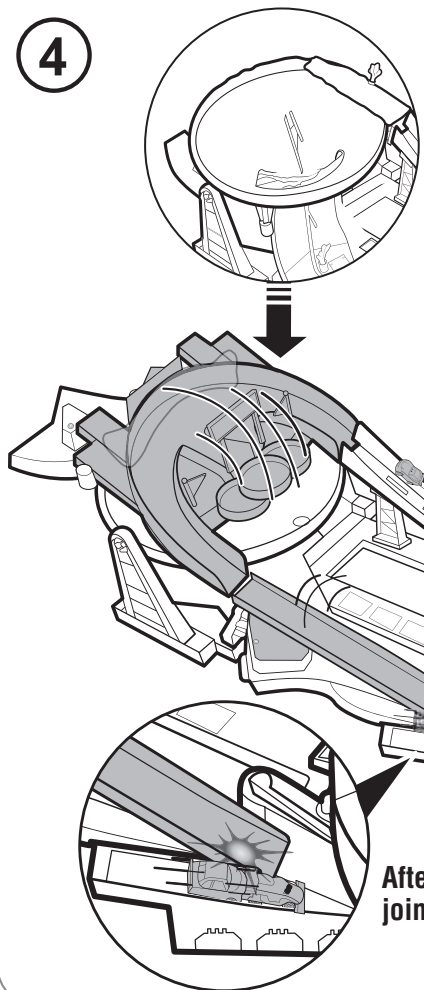


3

A Pump the booster.

Drift car through center
lane to flip the track.

4



5

Grandstand for
MICRO DRIFTERS™ fans!

First car onto the
Winner's Stage wins!

4

4 of 4 page

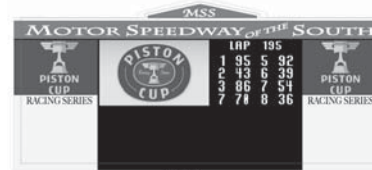


FAST-FLIP TRANSFORMING RACEWAY INSTRUCTIONS

4+

CONTENTS

Chip Art

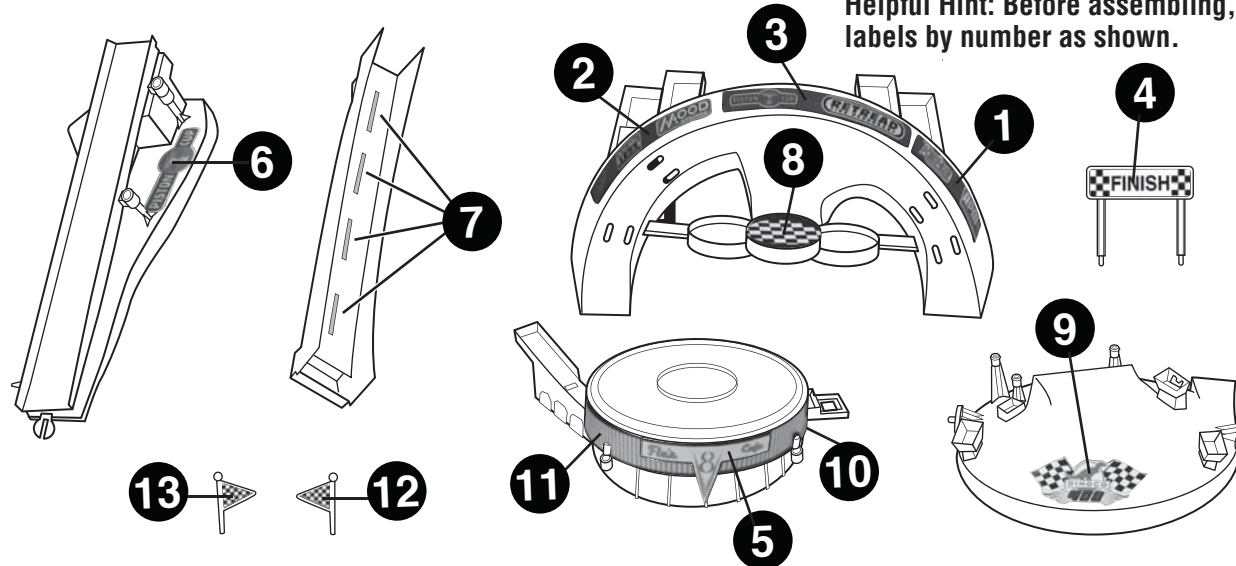


Label Sheet

WARNING:
CHOKING HAZARD - Small parts.
Not for children under 3 years.

1 / APPLY LABELS

Helpful Hint: Before assembling, apply
labels by number as shown.



©2013 Mattel. All Rights Reserved.
Mattel, Inc., 636 Girard Avenue, East Aurora, NY 14052, U.S.A. Consumer Relations 1-800-524-8697. Mattel U.K. Ltd., Vanwall Business Park, Maidenhead SL6 4UB. Helpline 01628 500303.
Mattel Australia Pty., Ltd., Richmond, Victoria, 3121 Consumer Advisory Service - 1300 135 312. Mattel East Asia Ltd., Room 503-08, North Tower, World Finance Centre, Harbour City, Tsimshat-sui, HK, China. Cimport & Diedarkan Oleh: Mattel SEA Ptd Ltd (985532-P) Lot 13.5, 13th Floor, Menara Lien Hoe, Persiaran Tropicana Golf Country Resort, 47410 PJ, Malaysia. Tel:03-78803817, Fax:03-78803867.

Monte Carlo® ; © Volkswagen AG ; Fiat™ ; Jeep® ; Gremlin™ ; Plymouth Superbird™
Petty® ; Fairlane™ ; Chevrolet® ; Mercury™ ; Pacer™ ; Hudson Hornet™

© Disney/Pixar

www.disney.com/cars

service.mattel.com

Y3153-0920G2

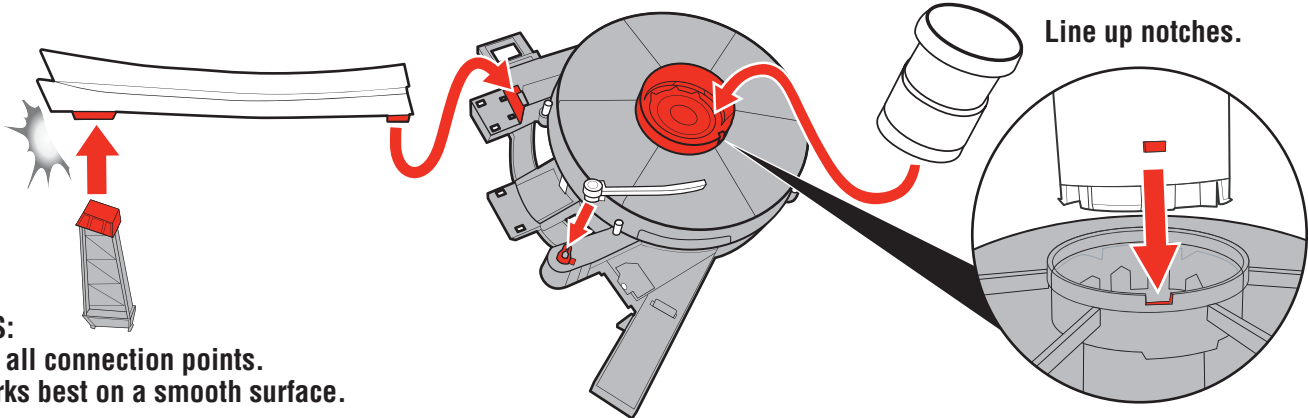


1

1 of 4 page

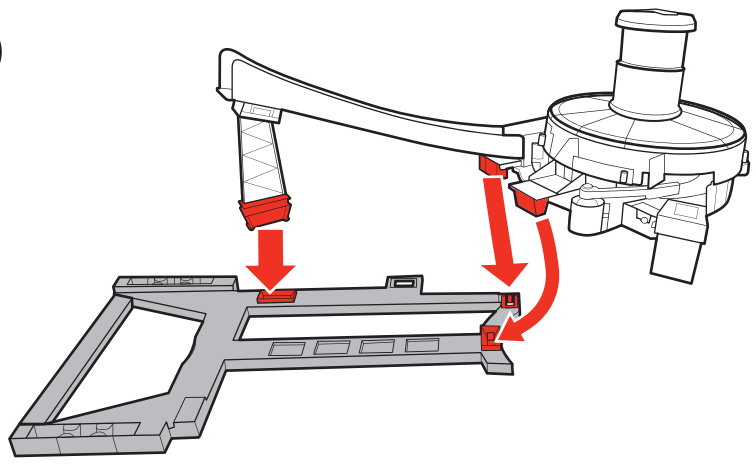
2 / ASSEMBLE

1

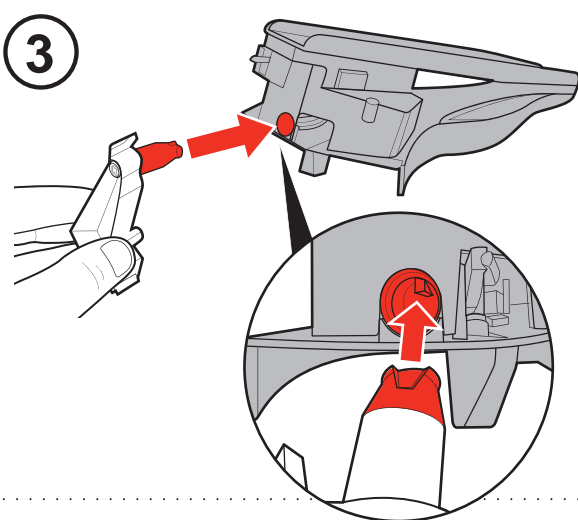


HELPFUL HINTS:
1. Fully snap in all connection points.
2. Raceway works best on a smooth surface.

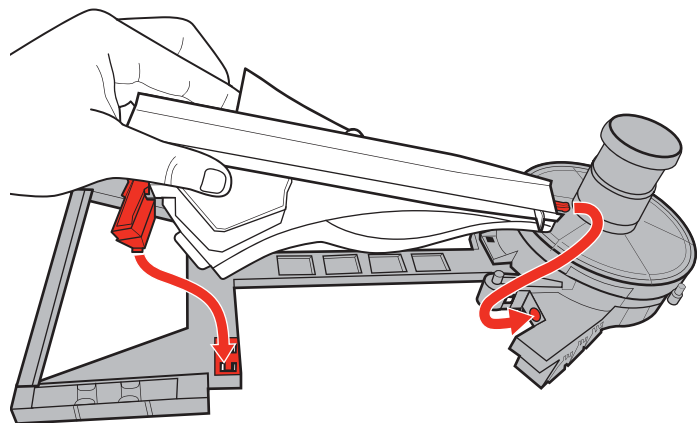
2



3

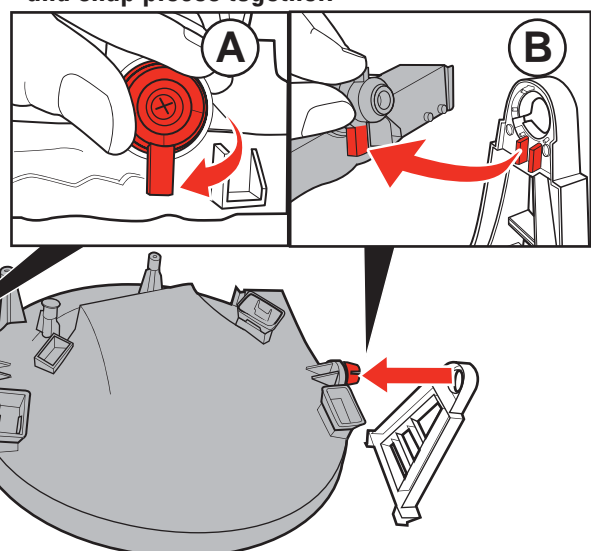


4

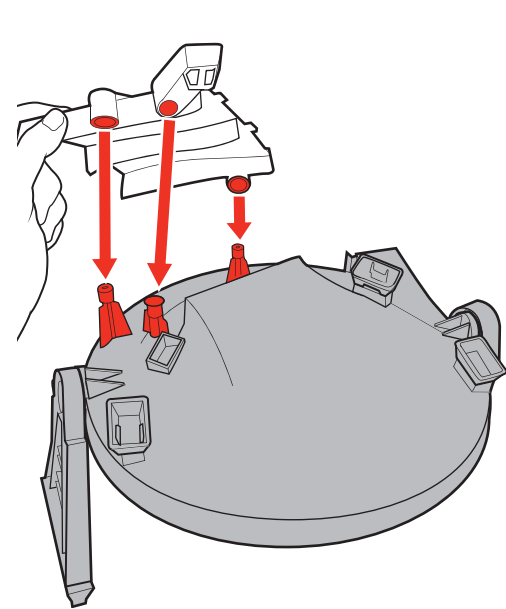


5

Turn knob, then line up notches
and snap pieces together.



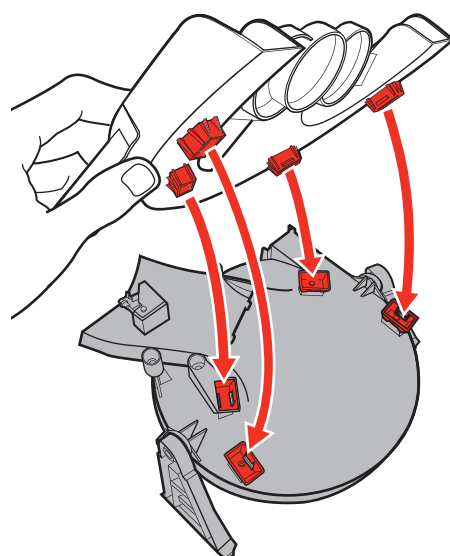
6



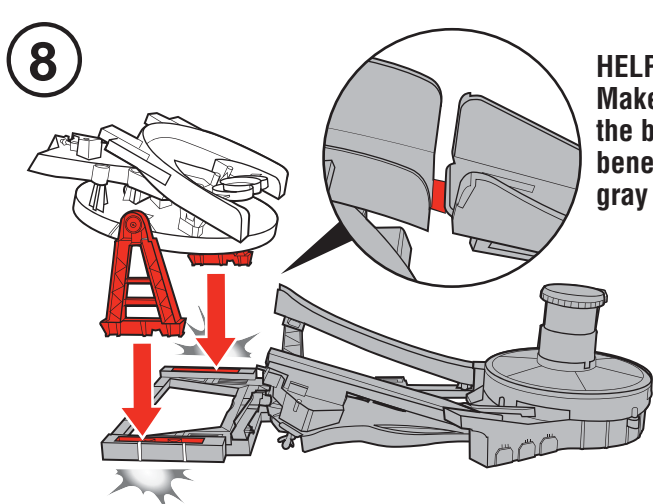
2

2 of 4 page

7

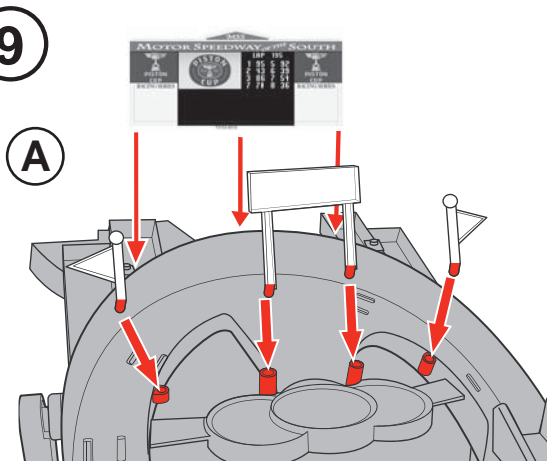


8

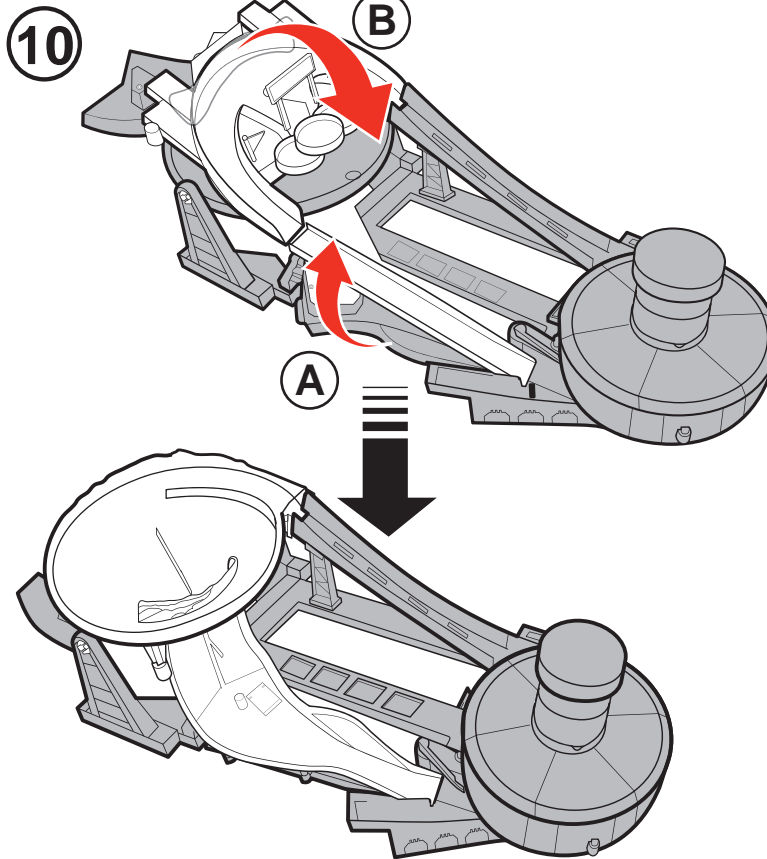


HELPFUL HINT:
Make sure that
the blue tip is
beneath the
gray track.

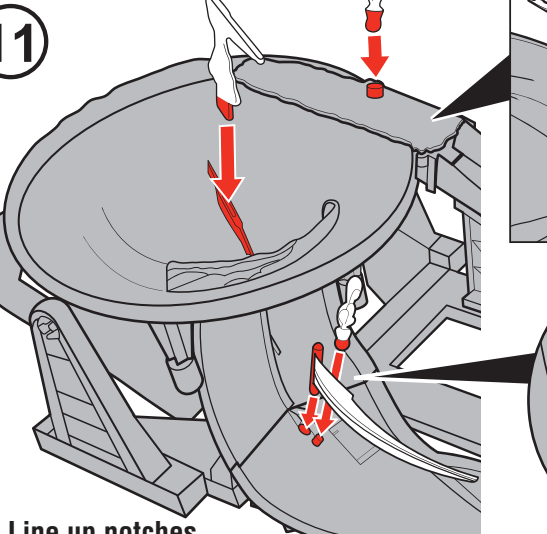
9



10



11



Line up notches.

3

3 of 4 page