



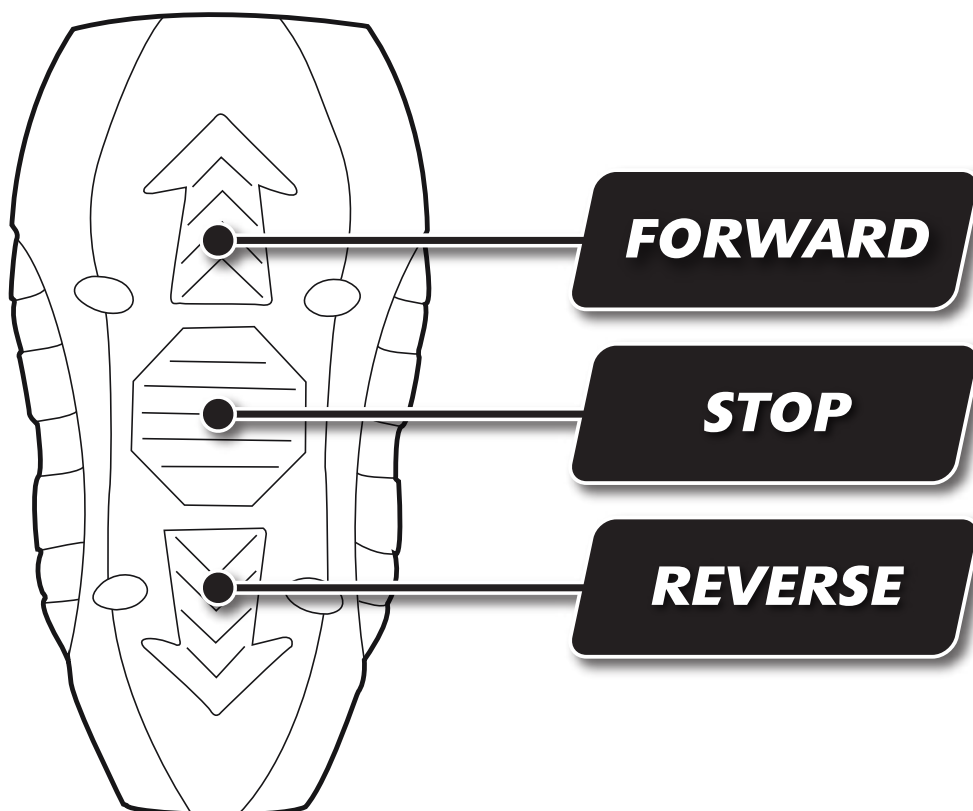
# R/C ENGINES

Remote Control Motorized Engine

## INSTRUCTIONS

Please keep these instructions for future reference as they contain important information.

### REMOTE CONTROL INSTRUCTION



SYMPTOM	SOLUTION
Engine drives slowly	The wheels on the engine or attached cars may be dirty. Wipe them with a clean cloth.
Engine does not respond to the remote controller	<ul style="list-style-type: none"><li>• Re-start the engine by switching it "OFF (O)" &amp; "ON (I)". If you do not operate the remote controller for a few minutes, the engine shuts off automatically.</li><li>• Battery power in the remote controller or in the engine may be weak. Replace <b>ALL FOUR</b> batteries in controller and engine with fresh, alkaline batteries.</li><li>• You may be beyond the maximum range of the remote controller (about 12 feet).</li><li>• You may not have a clear path between the engine and the remote controller. This toy works best when there are no obstructions between the engine and the remote. Operate the toy by holding the controller 2-feet minimum horizontally above the train.</li><li>• Try dimming the lights in the room. Bright sunlight or fluorescent lights may effect the range of the remote controller.</li></ul> <p><b>NOTE:</b> (i) Remote control engines only operate with the TrackMaster™ remote. They do not move on their own. (ii) Interference may occur and performance start to degrade if more than two characters are used at the same time in the same vicinity.</p>

## BATTERY INSTALLATION

Unscrew and lift cover away from products.

Install batteries as indicated inside the battery compartment.

For longer life use only alkaline batteries.

If this toy begins to operate erratically, you may need to reset the electronics.

Remove the batteries from the toy and replace it.

Requires 4 "AAA" (LR03) batteries.

## BATTERY SAFETY INFORMATION

In exceptional circumstances batteries may leak fluids that can cause a chemical burn injury or ruin your product. To avoid battery leakage:

- Non-rechargeable batteries are not to be recharged.
- Rechargeable batteries are to be removed from the product before being charged.
- Rechargeable batteries are only to be charged under adult supervision.
- Do not mix alkaline, standard (carbon-zinc), or rechargeable (nickel-cadmium) batteries.
- Do not mix old and new batteries.
- Only batteries of the same or equivalent type as recommended are to be used.
- Batteries are to be inserted with the correct polarity.
- Exhausted batteries are to be removed from the product.
- The supply terminals are not to be short-circuited.
- Dispose of battery(ies) safely.
- Do not dispose of this product in a fire. The batteries inside may explode or leak.

This equipment has been tested and found to comply with the limits for a Class B digital device, pursuant to part 15 of the FCC rules. These limits are designed to provide reasonable protection against harmful interference in a residential installation. This equipment generates, uses and can radiate radio frequency energy and, if not installed and used in accordance with the instructions, may cause harmful interference to radio communications. However, there is no guarantee that interference will not occur in a particular installation. If this equipment does cause harmful interference to radio or television reception, which can be determined by turning the equipment off and on, the user is encouraged to try to correct the interference by one or more of the following measures:

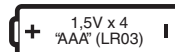
Reorient or relocate the receiving antenna. Increase the separation between the equipment and receiver. Connect the equipment into an outlet on a circuit different from that to which the receiver is connected.

Consult the dealer or an experienced radio/TV technician for help.

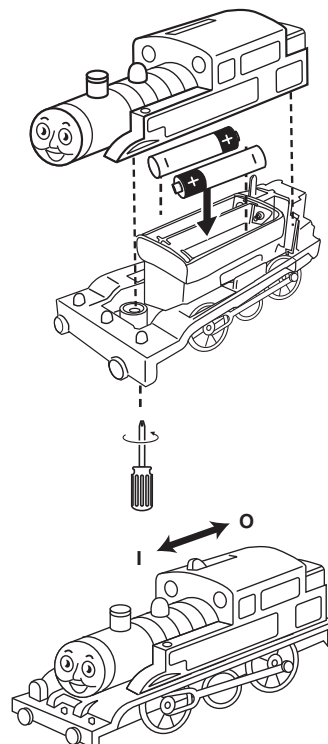
NOTE: Changes or modifications not expressly approved by the manufacturer responsible for compliance could void the user's authority to operate the equipment.

This device complies with part 15 of the FCC Rules. Operation is subject to the following two conditions:

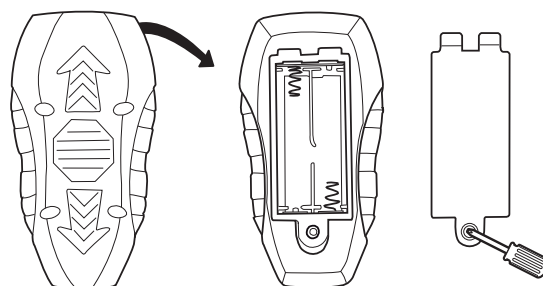
- (1) This device may not cause harmful interference, and (2) this device must accept any interference received, including interference that may cause undesired operation.
- THIS CLASS B DIGITAL APPARATUS COMPLIES WITH CANADIAN ICES-003.
  - CET APPAREIL NUMERIQUE DE LA CLASSE B EST CONFORME A LA NORME NMB-003 DU CANADA.
  - Operation is subject to the following two conditions: (1) this device may not cause interference, and (2) this device must accept any interference, including interference that may cause undesired operation of the device.
  - L'utilisation de ce produit est sujette aux conditions suivantes : (1) il ne doit pas produire de brouillage et (2) il doit pouvoir tolérer tout brouillage reçu, même si ce brouillage est susceptible de compromettre son fonctionnement.



**Required tool:**  
**Phillips screwdriver**  
(not included)



## Remote Control



## CONSUMER ASSISTANCE

1-800-432-5437 (US & Canada)  
1300 135 312 (Australia)

**service.fisher-price.com**

Fisher-Price, Inc., 636 Girard Avenue, East Aurora, NY 14052.  
Hearing-impaired consumers: 1-800-382-7470.

### Outside the United States:

Canada: Mattel Canada Inc., 6155 Freemont Blvd.,  
Mississauga, Ontario L5R 3W2; [www.service.mattel.com](http://www.service.mattel.com).

Great Britain: Mattel UK Ltd, Vanwall Business Park,  
Maidenhead SL6 4UB. Helpline: 01628 500303.  
[www.service.mattel.com/uk](http://www.service.mattel.com/uk)

Mattel Europa B.V., Gondel 1, 1186MJ Amstelveen, Nederland.

Australia: Mattel Australia Pty. Ltd., 658 Church Street,  
Locked Bag #870, Richmond, Victoria 3121 Australia.

New Zealand: 16-18 William Pickering Drive,  
Albany 1331, Auckland.

© 2013 Gullane (Thomas) Limited.

©2012, 2013 Mattel. All Rights Reserved.  
© and ™ designate U.S. trademarks of Mattel, except as noted.  
**PRINTED IN CHINA.**

Mattel East Asia Ltd., Room 1106, South Tower, World Finance Centre,  
Harbour City, Tsimshatsui, HK, China.



Protect the environment by not disposing of this product with household waste (2002/96/EC). Check your local authority for recycling advice and facilities.



HIT entertainment

**Fisher-Price®**

**V7626**