

Fisher-Price®



fisher-price.com



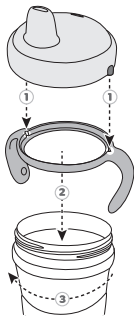


WARNING

For your child's safety and health:

- Always use this product with adult supervision.
- Continuous and prolonged sucking of fluids will cause tooth decay.
- Always check food temperature before feeding.
- Never allow child to walk or run with this product.

Instructions for Use



- Keep instructions for future reference.
- Before use, thoroughly wash all parts that may contact food. Wash in warm, soapy water.
- Do not use harsh or abrasive cleaners or sponges. Rinse to remove residue.
- Do not use in microwave. Do not use with carbonated beverages, pulpy juices or fatty foods.
- Top-rack dishwasher safe.



1-800-432-5437

Fisher-Price, Inc., 636 Girard Avenue,
East Aurora, NY 14052. Hearing-impaired
consumers: 1-800-382-7470.

Mattel Australia Pty. Ltd., 658 Church
Street, Locked Bag #870, Richmond,
Victoria 3121 Australia.

16-18 William Pickering Drive,
Albany 1331, Auckland.

Mattel UK Ltd, Vanwall Business Park,
Maidenhead SL6 4UB. Helpline: 01628 500303.
www.service.mattel.com/uk

Mattel Europa B.V., Gondel 1, 1186MJ
Amstelveen, Nederland.