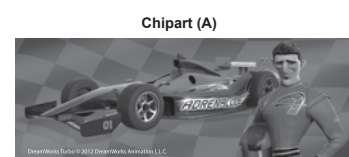
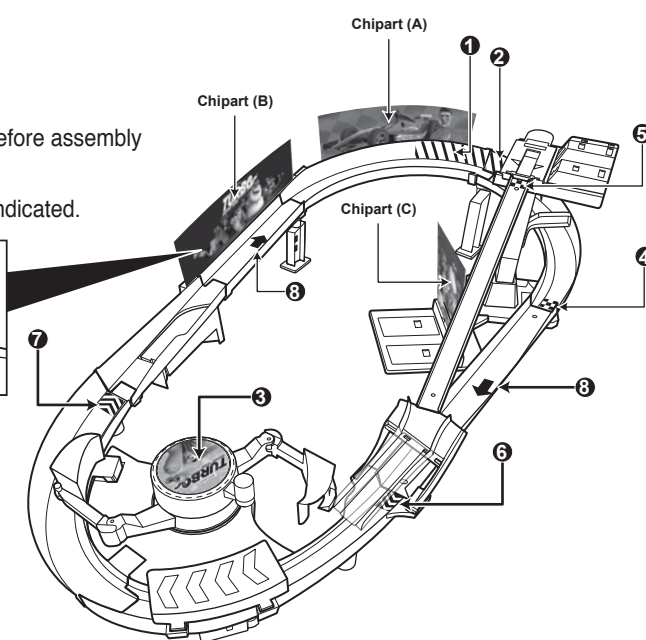
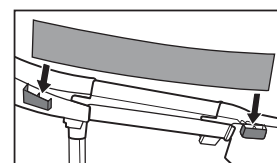


APPLY LABELS

Helpful Hint: Apply labels before assembly by number as indicated.

Attach chipart by letter as indicated.



TO PLAY

1. Wind crank until there is resistance. Then load Shell Racer™.

2. Lift platform to begin practice laps.

3. Press button to send Shell Racer™ into crash pit.

4. Wind crank and push lever down to reset. Load Shell Racers™ for the race.

5. Let's race!

6. Winners podium!

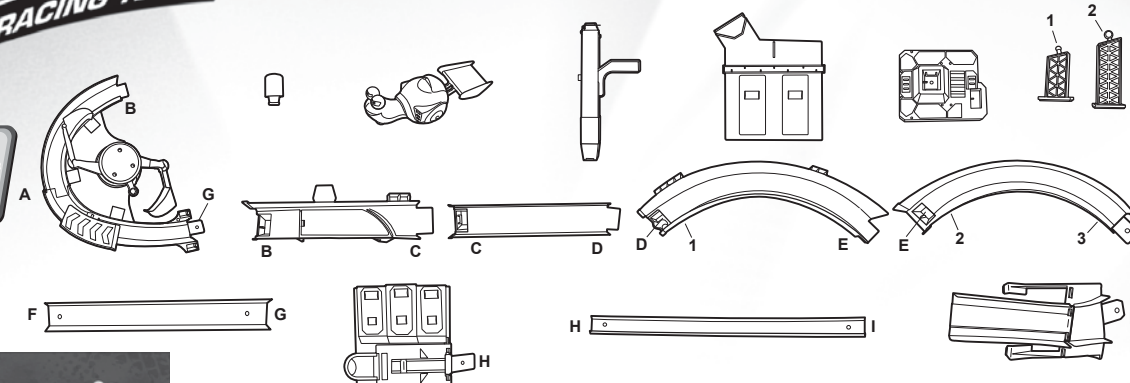
Additional Shell Racers™ not included.
Not for use with some Turbo Shell Racers™.

SHELL RACER™ SPEEDWAY INSTRUCTIONS

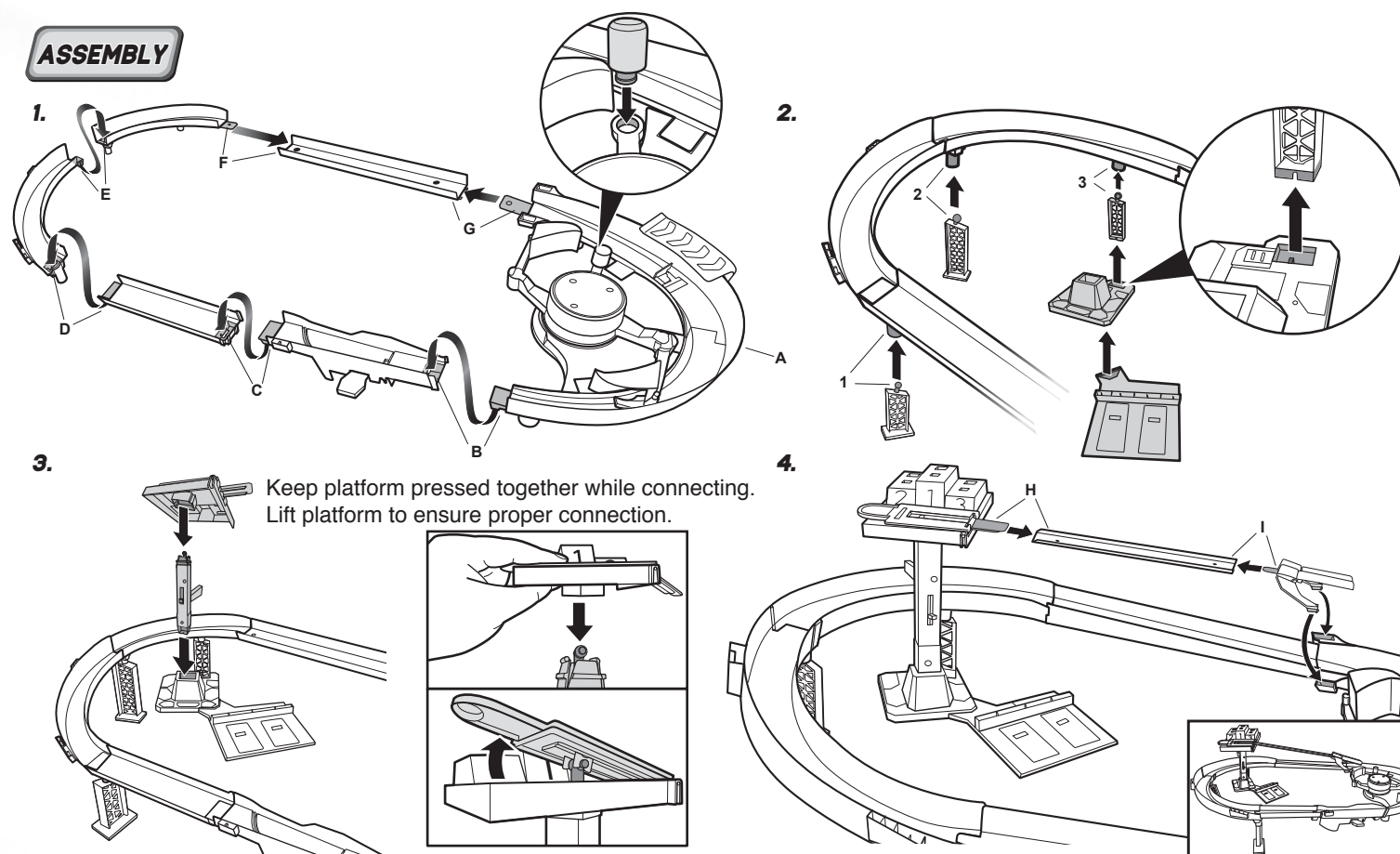
3+

Please keep these instructions for future reference as they contain important information.

CONTENTS



ASSEMBLY



WARNING:
CHOKING HAZARD - Small parts.
Not for children under 3 years.

©2012 Mattel. All Rights Reserved. Mattel, Inc., 636 Girard Avenue, East Aurora, NY 14052, U.S.A. Consumer Relations 1-800-524-8697. Mattel U.K. Ltd., Vanwall Business Park, Maidenhead SL6 4UB. Helpline 01628 500303. Mattel Australia Pty., Ltd., Richmond, Victoria. 3121.Consumer Advisory Service - 1300 135 312. Mattel East Asia Ltd., Room 1106, South Tower, World Finance Centre, Harbour City, Tsimshatsui, HK, China. Diimport & Diedarkan Oleh: Mattel SEA Ptd Ltd.(993532-P) Lot 13.5, 13th Floor, Menara Lien Hoe, Persiaran Tropicana Golf Country Resort, 47410 PJ. Tel:03-78803817, Fax:03-78803867.

DreamWorks Turbo © 2013 DreamWorks Animation L.L.C.

service.mattel.com



INSTRUCTION SHEET SPECIFICATIONS

Toy No.: Y5799
Part No.: Y5799-0920
Trim Size: A4
Folded Size: A5
Type of Fold:
colors: Black
Colors: White Offset
Paper Stock: 70 lb.
Paper Weight:
EDM No.:

2 PANEL Folding Dummy

