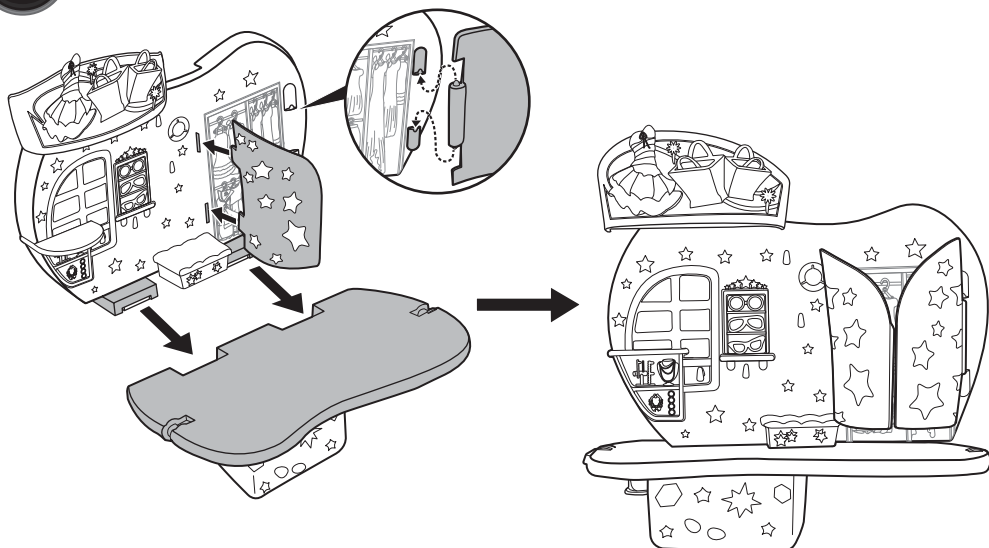




# 1

## Assemble the Playset



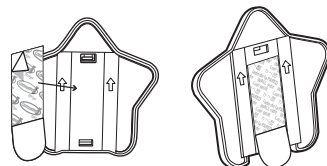
# 2

## Apply Command® Strips

Separate strips. Remove red-printed liner from one Command® Strip and apply to back of bracket as shown. Make sure the strip tab is accessible for future removal.

NOTE: DO NOT PULL BRACKET OFF WALL without reading removal instructions.

Red Printing = On Bracket

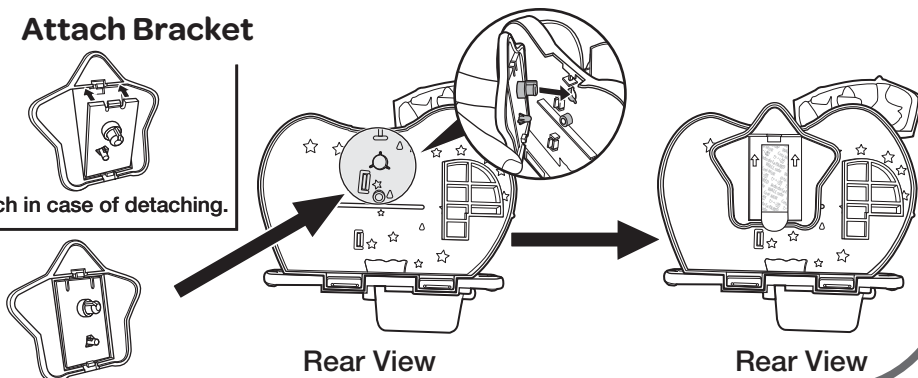


Black Printing = On Wall

# 3

## Attach Bracket

Reattach in case of detaching.

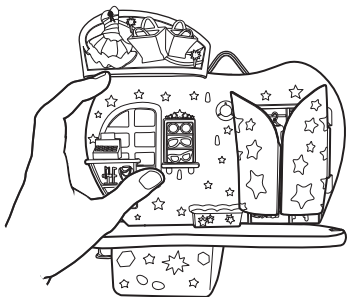


# 4

## Hang Playset on Wall

1. Remove black-printed liner from Command® Strip.
2. Position playset level against the wall at a suitable height for your child.
3. Press bracket firmly onto wall and hold for 30 seconds.

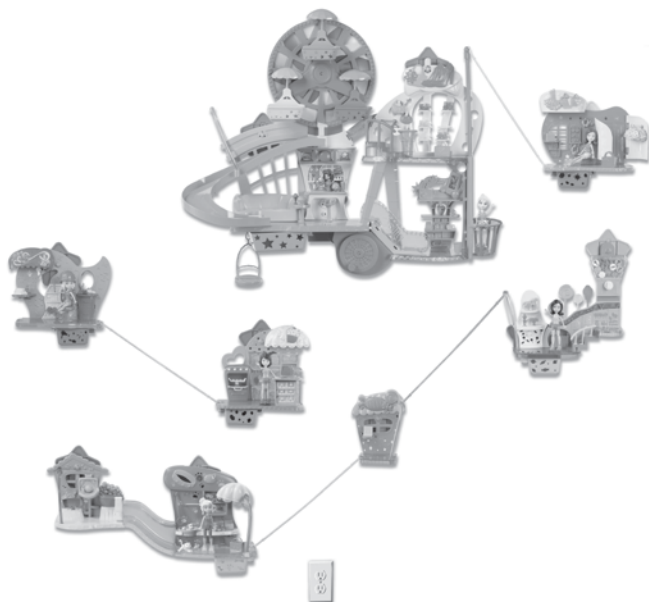
NOTE: For optimal adhesion performance, 3M recommends waiting 1 hour before adding weight to Command® Strips.



# 5

## Connect with other Wall Party™ Playsets (sold separately)

1. Attach zip line to playset on wall.
2. Follow Steps 1-3 on the other Wall Party™ playset instructions.
3. Attach zip line to other Wall Party™ playset.
4. Position other playset to desired location, level against the wall.
5. Press playset firmly onto wall and hold for 30 seconds.
6. Connect all playsets together to create your own Wall Party™!

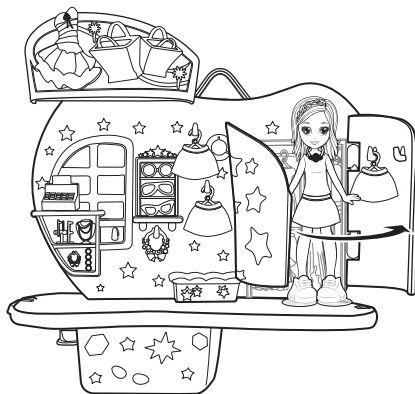
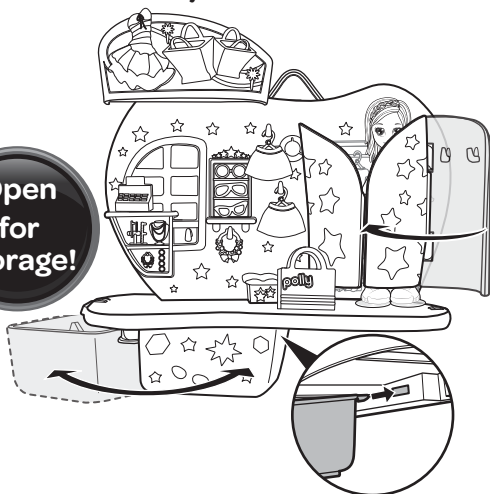


**Connects to  
ALL  
Wall Party™  
playsets!**

# 6

## How to Play

Open  
for  
storage!

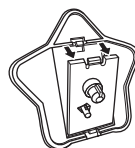


NOTE: For best results, apply suction cups on smooth area and clean suction cups with water periodically.

# 7

## Reattaching & Removal

1. Mounting plates are designed to break away from the set without causing surface damage.
2. To remove bracket from the wall entirely:
  - a. NEVER pull strip towards you.
  - b. Hold bracket gently to prevent it from snapping fingers. DO NOT press against wall.
  - c. Grab tab on Command® Strip and SLOWLY STRETCH STRAIGHT DOWN ALONG WALL AT LEAST 12 INCHES until bracket and strip release.
3. Purchase medium Command® Refill Strips to reapply to your wall.



With

**Command**  
BRAND

STRIPS

for  
Damage-Free Hanging

**3M**

Command® Strips are a product of 3M. For further information visit [command.com](http://command.com)

NOTE: Apply strips to surfaces above 50°F (10°C).  
Adhesive could lose adhesion above 105°F (40°C).

### CAUTION:

DO NOT use with wallpaper. May not adhere well to vinyl surfaces.  
DO NOT hang items over beds.

3M and Command are trademarks of 3M.

© 3M 2012. All Rights Reserved.

©2012 Mattel and/or Origin Products Ltd. All Rights Reserved. Mattel, Inc., 636 Girard Avenue, East Aurora, NY 14052, U.S.A. 1-800-524-8697. Mattel Australia Pty. Ltd., Richmond, Victoria. 3121. Consumer Advisory Service - 1300 135 312. Mattel East Asia Ltd., Room 1106, South Tower, World Finance Centre, Harbour City, Tsimshatsui, HK, China. Diimport & Diedarkan Oleh: Mattel SEA Ptd Ltd. (993532-P) Lot 13.5, Menara Lien Hoe, Persiaran Tropicana Golf Country Resort, 47410 PJ. Tel: 03-78803817, Fax: 03-78803867.

[service.mattel.com](http://service.mattel.com)



Y6435-0920