

Fisher-Price®

Y6971
BMG84



Please keep this instruction sheet for future reference,
as it contains important information.

Adult setup required.

This product is compatible with first, second and third generation iPad®,
and the new iPad® with Retina display. Device not included.

Only use this product with your iPad® device properly inserted and locked in the case.

Remove any other cases from the device before inserting it in the case.

fisher-price.com



CONSUMER ASSISTANCE

1-800-432-5437 (US & Canada)

1300 135 312 (Australia)



service.fisher-price.com

Fisher-Price, Inc., 636 Girard Avenue, East Aurora, NY 14052.

Hearing-impaired consumers: 1-800-382-7470.

Outside the United States:

Canada: Mattel Canada Inc., 6155 Freemont Blvd.,
Mississauga, Ontario L5R 3W2; www.service.mattel.com.

Great Britain: Mattel UK Ltd, Vanwall Business Park,
Maidenhead SL6 4UB. Helpline: 01628 500303.
www.service.mattel.com/uk

Mattel Europa B.V., Gondel 1, 1186 MJ Amstelveen, Nederland.

Australia: Mattel Australia Pty. Ltd., 658 Church Street,
Locked Bag #870, Richmond, Victoria 3121 Australia.

New Zealand: 16-18 William Pickering Drive,
Albany 1331, Auckland.

- Periodically check this product and your device for damage or cracks. Do not use if either is damaged or broken. Follow your device's instructions for use and care.
- Do not use alcohol or ammonia based cleaners on the screen protector.
- Wipe this product with a clean, damp cloth. Do not immerse.



Available on the
App Store

Apple, the Apple logo and iPad® are trademarks of Apple, Inc., registered in the US and other countries.
App Store is a service mark of Apple, Inc.

©2013 Mattel. All Rights Reserved. ® and ™ designate U.S. trademarks of Mattel, except as noted.

2 Downloadable Apps!



- Download our Fisher-Price® apps. Scan the QR code above with your iPad® or go to the App StoreSM.

Insert Your Apple Device



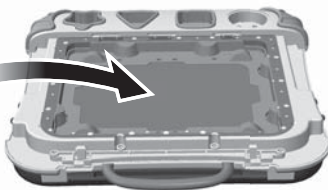
1

Latches

- First, slide both latches on the front of the case at the same time.
- Then, lift and remove the case cover.
- Turn your device power ON and open the Fisher-Price® app.

Home Button

Protective Strip



2

Hint: If you'd like to **block** baby from pressing the home button, follow the instructions in this step.

- Insert the device with the home button on the same side as the clear protective strip on the case cover.

Insert Your Apple Device

Home Button

3



Hint: If you'd like to **allow** baby to press the home button, follow the instructions in this step.

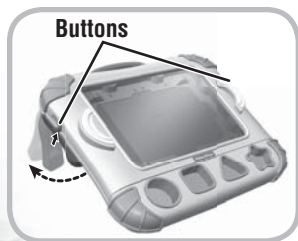
- Insert the device with the home button on the opposite side of the clear protective strip on the case cover.

4



- At an angle, fit the tabs on the case cover into the slots in the case.
- Press down on the front of the case cover to lock in place.

Shape Stampers



Easel Play



Flat Play

-
- The stampers interact with the app to teach shapes, colors and more!

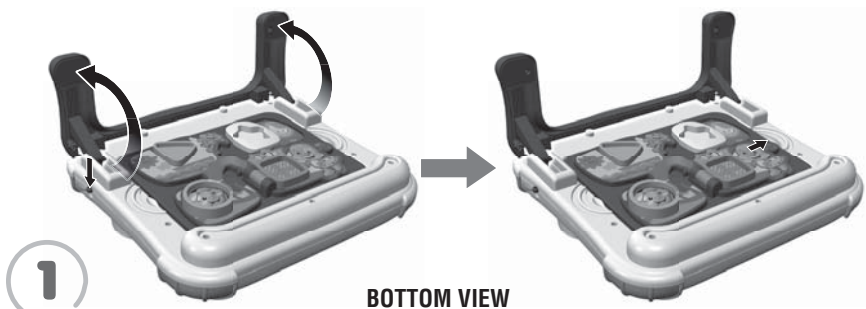
Easel Play

- While sliding the buttons up on each side of the case, pull the easel out until you hear a “click”.

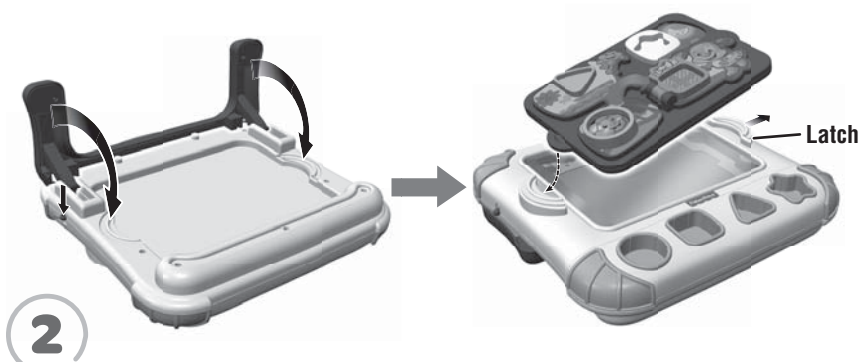
Flat Play

- While sliding the buttons up on each side of the case, push the easel in until it's flat against the case.

Snap-on Play Panel

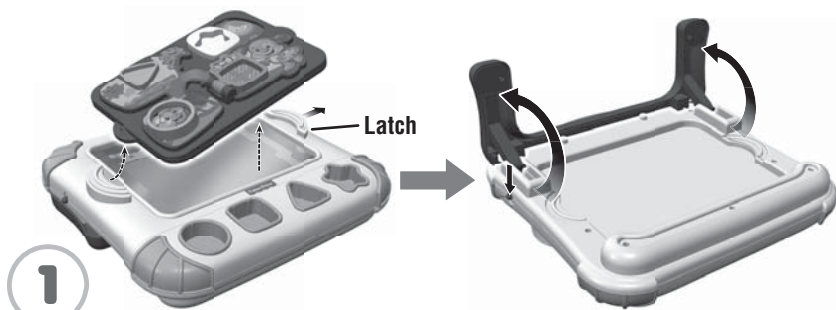


- While sliding the buttons down on each side of the case, lift the easel.
- Push the latch and lift to remove the play panel.

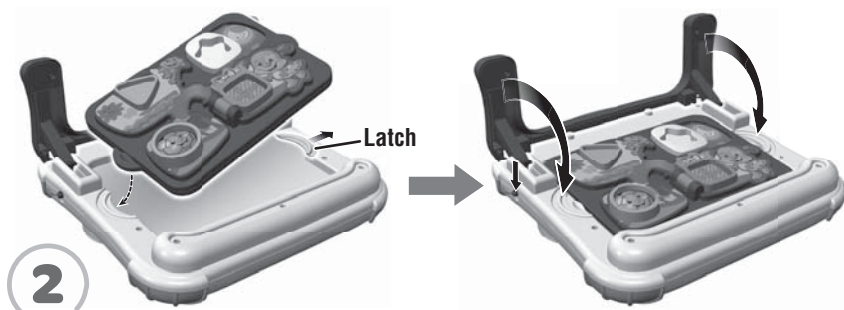


- While sliding the buttons down on each side of the case, lower the easel.
- At an angle, fit a tab on the play panel into the notch in the case.
- Slide the latch on the case out and fit the other tab on the play panel into the case. Release the latch to secure the play panel in place.

Play Panel Storage



- Slide the latch on the case out and lift to remove the play panel.
- While sliding the buttons down on each side of the case, lift the easel.
- Turn the case over.



- At an angle, a tab on the play panel into the notch in the case.
- Slide the latch on the case out and fit the other tab on the play panel into the case. Release the latch to secure the play panel in place.
- While sliding the buttons down on each side of the case, lower the easel.