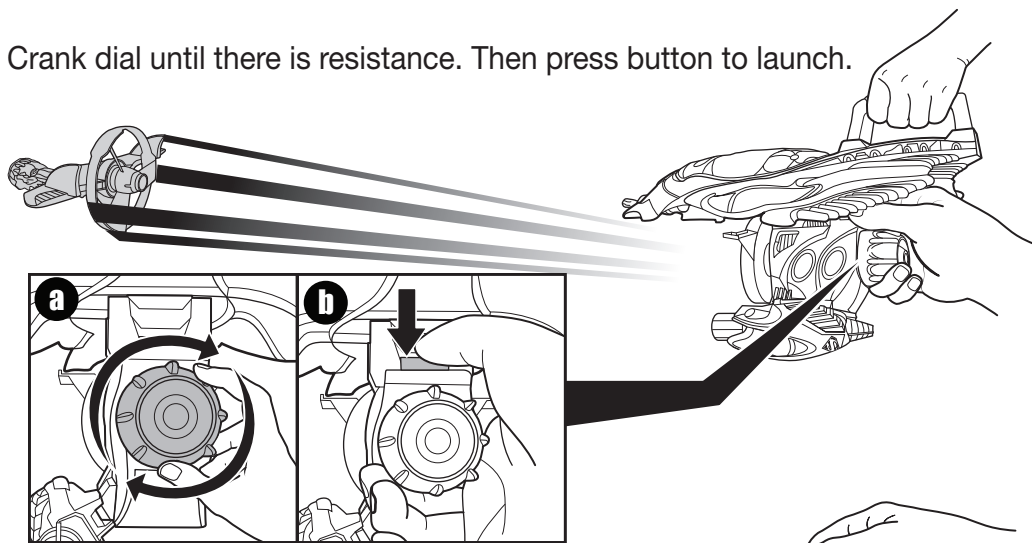
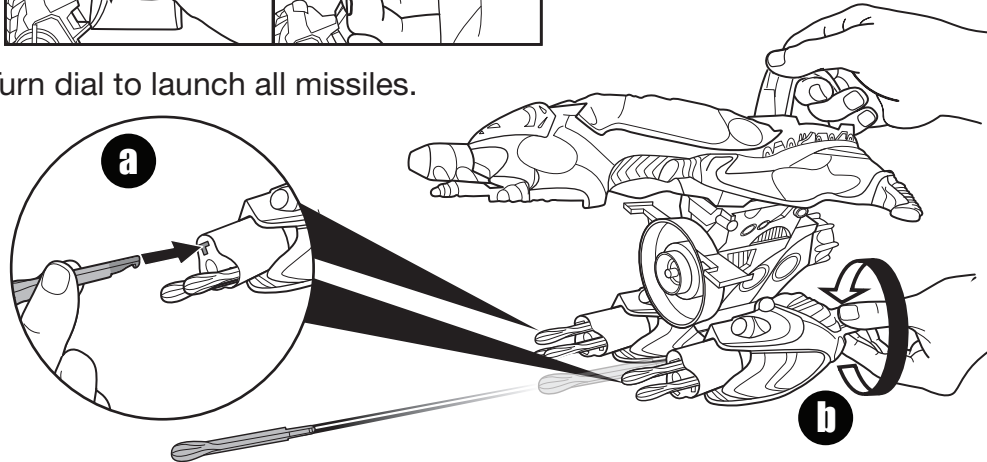


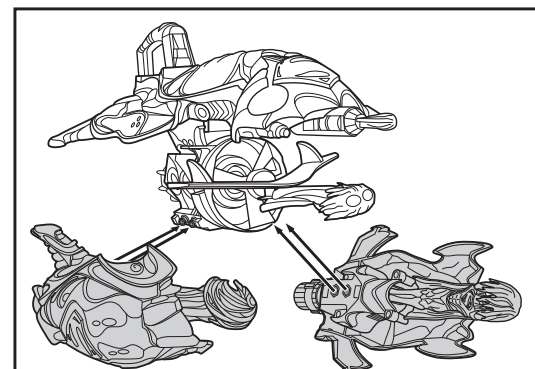
4. Crank dial until there is resistance. Then press button to launch.



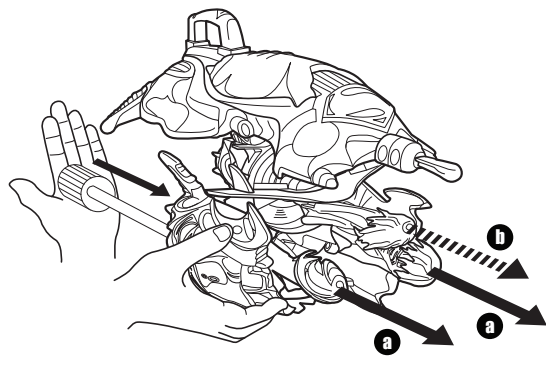
5. Turn dial to launch all missiles.



CONNECT



Connects with Asst. Y0833 Flight Speeders™ Launchers (not included).



IMPORTANT: Launch both missile figures **a** before launching wing pack **b**.



ULTIMATE SUPERMAN™ STRIKE SHIP INSTRUCTIONS

MAN OF STEEL™

4+

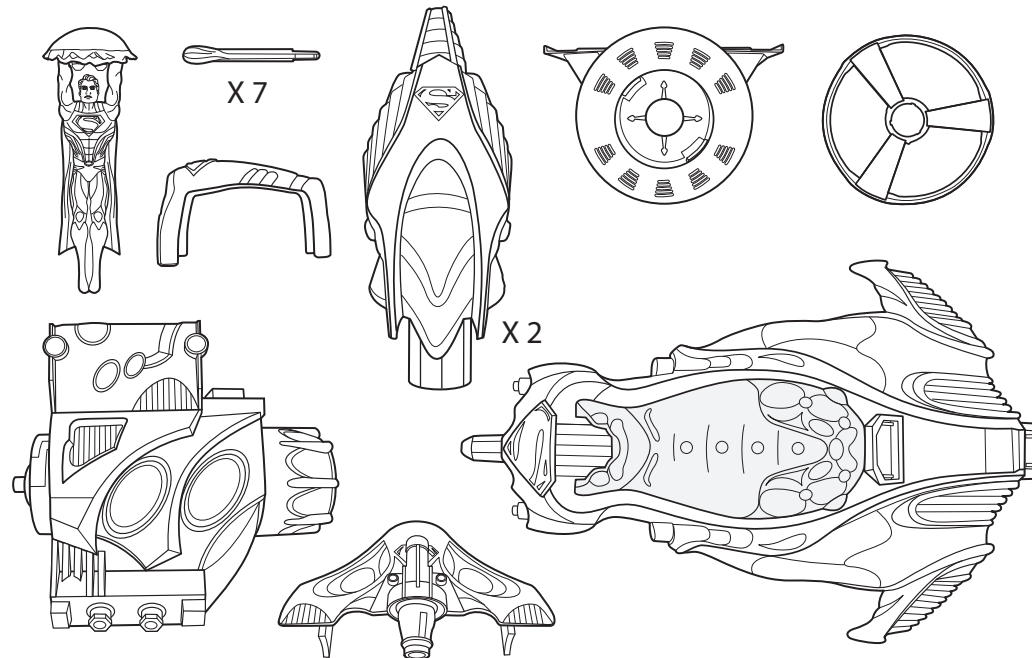
Please keep these instructions for future reference as they contain important information.

CONTENTS

Please be a safe pilot and use common sense.

If you use this toy outdoors, please be sure to:

- Give yourself plenty of flying room.
- Avoid tall buildings and trees.
- Do not fly the aircraft in the street.
- Watch out for people, animals and obstacles.



©2013 Mattel. All Rights Reserved. Mattel, Inc., 636 Girard Avenue, East Aurora, NY 14052, U.S.A. Consumer Relations 1-800-524-8697. Mattel U.K. Ltd., Vanwall Business Park, Maidenhead SL6 4UB. Helpline 01628 500303. Mattel Australia Pty., Ltd., Richmond, Victoria. 3121. Consumer Advisory Service - 1300 135 312. Mattel East Asia Ltd., Room 1106, South Tower, World Finance Centre, Harbour City, Tsimshatsui, HK, China. Diimport & Diedarkan Oleh: Mattel SEA Ptd Ltd.(993532-P) Lot 13.5, 13th Floor, Menara Lien Hoe, Persiaran Tropicana Golf Country Resort, 47410 PJ. Tel:03-78803817, Fax:03-78803867.



Based on DC Comics Characters.
SUPERMAN and all related characters and elements are trademarks of and © DC Comics.
(s13)



service.mattel.com

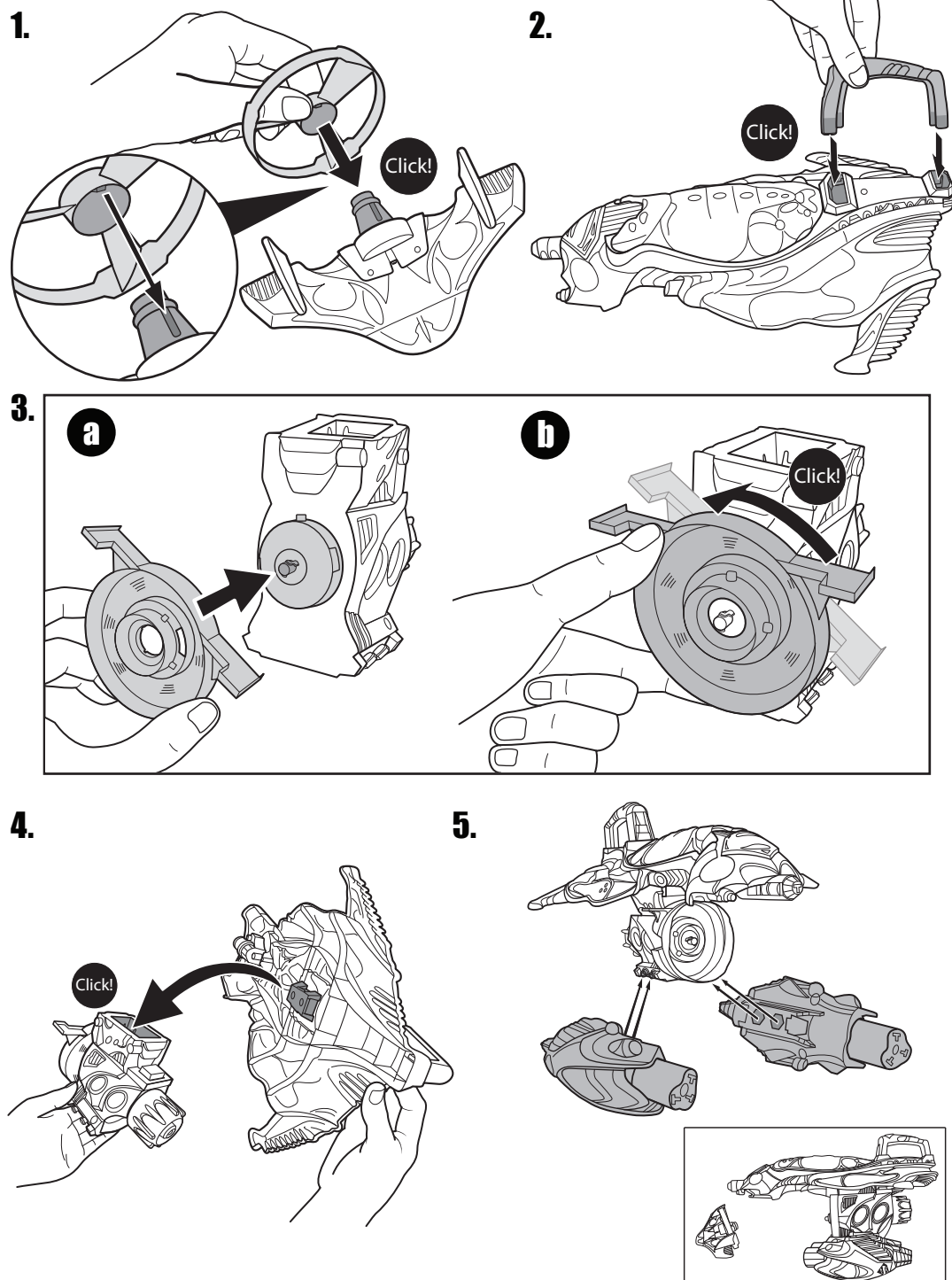


INSTRUCTION SHEET SPECIFICATIONS

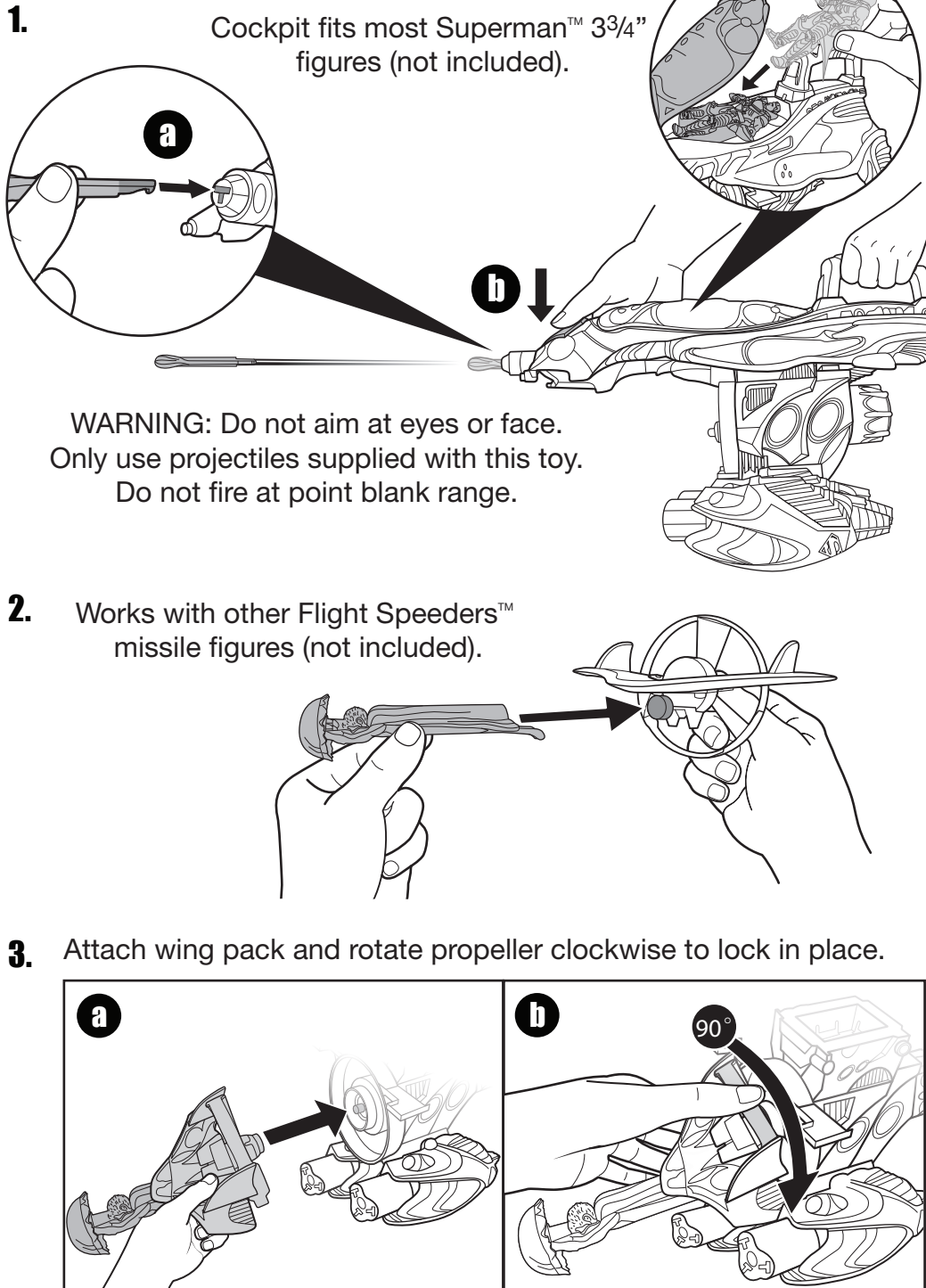
Toy: _____
Toy No.: _____ Y9203
Part No.: _____ 0920
Trim Size: _____ A4
Folded Size: _____
Type of Fold: _____
colors: _____ One
Colors: _____ black
Paper Stock: _____ FSC recycled paper
Paper Weight: _____ 70 gsm
EDM No.: _____

front panel

ASSEMBLY



TO PLAY



back panel