



**WARNING:**  
**CHOKING HAZARD** - Small parts.  
 Not for children under 3 years.

5+

G4635-0920

# INSTRUCTION MANUAL

Keep these instructions for future reference, as they contain important information.

**ADULT ASSEMBLY REQUIRED.**

**START HERE!**

Follow the step-by-step instructions to set up your race set.

Please separate the "Assembly Map" page, and keep it handy during assembly. This page contains the contents list and large-scale Layout Drawings of the fully-assembled track. You'll need to refer to it as you go.

The Assembly Map looks like this:

**ASSEMBLY MAP**

This page shows the contents list and large-scale Layout Drawings of the fully-assembled track. Tracks are not drawn to scale. You'll need to refer to it as you assemble your race set. Refer to the instructions sheet for detailed step-by-step instructions for setting up and using your race set.

**CONTENTS LIST**

1	1	6	1	2	1
TERMINAL TRACK	STRAIGHT	RADIUS CURVE	SUBSIZE	WHEELS	BATTERY PACK
8	1	1	6	1	2
GUARDRAIL	VEHICLE	VEHICLE	CLIPS	BANANAS	SUPPORTS
					CARD BOARD

Refer to the package for color photographs of the assembled layout.

**MAIN LAYOUT DRAWING**

Use either a diorama or a guardrail on the outside of the curves.

**ALTERNATE LAYOUT DRAWING**

IF ANY PARTS ARE MISSING OR DAMAGED - DON'T RUN YOUR RACE SET TO THE STORE! CALL OUR CUSTOMER SERVICE TEAM AT 1-888-557-8926 FOR MORE INFO.

**300000**

1 - Beginner  
 2 - Average player  
 3 - Skilled player

**TRACK SUPPORTS**

**GUARDRAILS**

G4635-0921

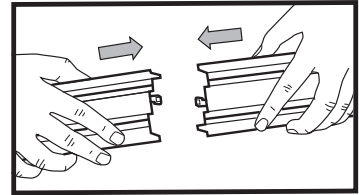
Look for this symbol throughout this manual. It indicates important information.

Be sure to check out the Troubleshooting Guide on the back of the Assembly Map.

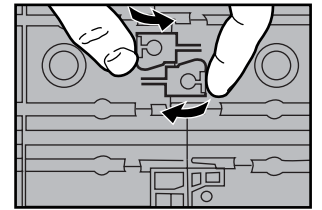
## I. BASIC TRACK ASSEMBLY

Start out on a clean, hard, flat racing surface – not carpeting. Take out all the track pieces (and other parts) and check them carefully against the contents list on the Assembly Map.

1. There are letters molded into each track piece. These letters are used in these instructions to indicate which track piece goes where. Following the layout drawings on the Assembly Map, you may want to lay out your track – without connecting any track pieces. That way you'll be able to see how the track layout goes together.



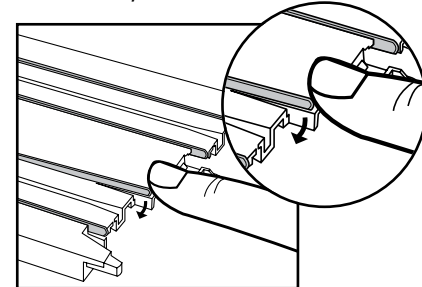
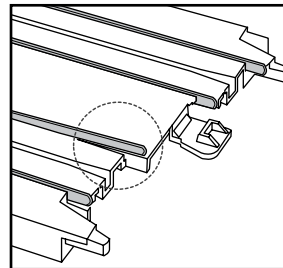
2. To connect track pieces: working on the flat surface, push the ends of the track pieces together. Make sure they snap together securely – you'll hear a click when they're properly connected. Remember: if the track connections aren't right, electric power won't flow from one track section to the next.



3. To disconnect track pieces, simply reach underneath where the track pieces meet and press the locking tabs together with thumb and forefinger as shown.



Occasionally the metal track rails will stick up too far from the surface of a track piece, as shown. This may interfere with vehicle movement. To correct, simply press the rail back down with your finger. If the problem persists, please contact Customer Service toll-free at 1-888-557-8926 (see hours of operation in the Warranty section).

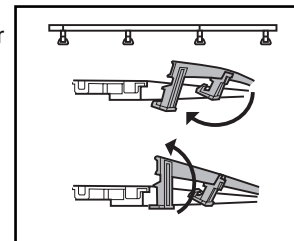


Sometimes brand-new track may need a quick cleaning for best performance. Check the Maintenance section of this manual for more information.

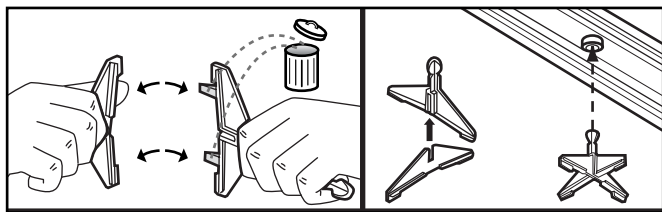
## II. DETAILED TRACK ASSEMBLY

- a. Your race set makes two different layouts. Refer to the Assembly Map for detailed track assembly. Start with the Terminal Track (A) and continue adding track pieces until your layout is complete.

- b. Once your layout is assembled, you'll need to add guardrails. Refer to the Assembly Map for placement. To attach a guardrail: gently flex the guardrail before attaching it. Carefully attach the bottom of the guardrail first. Then pull up and snap into place. Don't force guardrails into place.

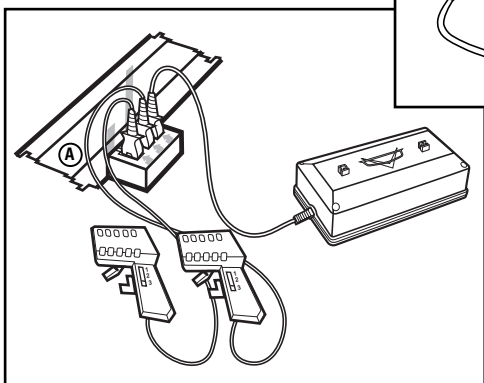
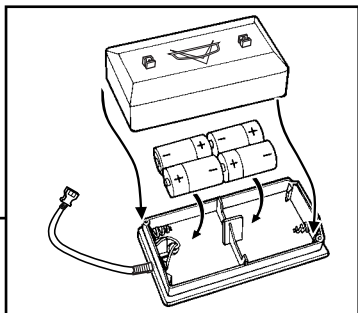


- c. Next you'll need to add the track supports. Refer to the Assembly Map for placement. Attach them as shown. To assemble a track support, separate the pieces as shown and snap off the connector tabs (discard the tabs). Next, fit the two pieces together as shown. Insert the assembled track support into the round hole on the underside of the track as shown.



### III. BATTERY BOX / HAND CONTROLLER ASSEMBLY

Requires 4 x 1.5V "D" size (LR20) batteries (not included). Install 4 x 1.5V "D" size (LR20) alkaline batteries (not included) as shown.



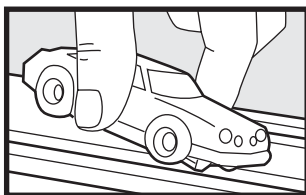
#### USE ALKALINE BATTERIES ONLY.

Battery Performance Note: For best performance use alkaline batteries (where disposable batteries are called for). Replace batteries when vehicle motion becomes too slow. If your product is supplied with standard (carbon-zinc) batteries for initial use and/or demonstration purposes, we recommend replacing them with alkaline batteries when necessary. Battery life may vary depending on battery brand.



**Always unplug your Battery Pack when not in use!**

- The cables for the Battery Pack and the hand controllers have color-coded plugs to help you make your connections properly. First, plug the red plug into the red receptacle on the terminal track. Next, plug the yellow hand controllers into the yellow receptacles on the terminal track.
- To test track and power connections, hold a car on the track with its metal contacts touching the metal track rails. Gently hold the front end of the car down while lifting the vehicle as shown (do not lift the vehicle by its rear tires). Squeeze the hand controller: the car's rear tires should spin. If they don't, there's a connection problem. Carefully check the track and power connections.
- Your hand controller is your car's "throttle." The more you squeeze the trigger the faster your car will go. Practice at a slow speed for a few laps, until you're ready to race!



#### **SPECIAL NOTE TO ADULTS:**

- Always make sure your Race Set is unplugged before assembling or disassembling track. Always unplug Battery Pack when not in use. Regularly examine for damage to the cord, plug, enclosure and other parts.
- In the event of any damage, this toy must not be used with the battery box until the damage has been repaired.
- If this toy is being operated in the presence of children under 5 years old, adult supervision is recommended.
- This toy is not intended for children under 3 years old.
- Disconnect from the battery box before cleaning.

## CONGRATULATIONS!

You're ready to race. For "pro" competition, please read the following driving tips and maintenance hints.

### DRIVING TIPS

Here are some "inside" racing tips...for top performance!

- Always race on a clean, hard, flat surface. For best racing performance, we don't recommend carpeting.
- Clean track is IMPORTANT for best performance! Please refer to the Maintenance section for detailed instructions for cleaning the track.
- Races are won in the curves! Slow down going into the curves...then speed up coming out of them. Accelerate to build up speed for loops and jumps.
- Anyone can be a "pro" racer – the secret is practice! Remember to "break in" your new cars with a few "qualifying" laps. Cars always run better after they've "warmed up."
- Experienced racers know that regular maintenance is the key to top racing performance. Read and follow the easy steps in Section II.
- If you have questions or difficulty operating your Race Set, check the Troubleshooting Chart first. Usually a quick "pit stop" will get you racing again!

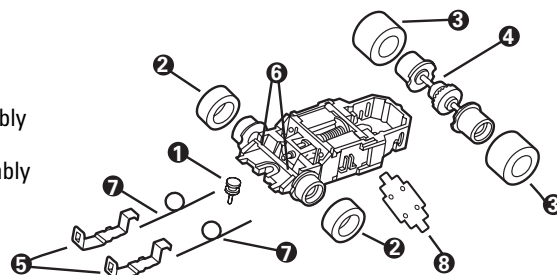
### MAINTENANCE:

**ADULTS NOTE: All "pro" racers know that their vehicles need maintenance from time to time...for best performance. Follow these simple steps to keep your car running at its best!**

#### A. CHASSIS PARTS

This diagram will help you understand the parts of your vehicle, and how they go together.

- Guide Pin
- Front Tires
- Rear Tires
- Rear Axle Assembly
- Contacts
- Front Axle Assembly
- Springs
- Heat Shield



## B. TRACK CLEANING

Clean track is **IMPORTANT** for best performance!

1. Dirty track may cause your vehicle to stall. Usually you can get it going again by pressing the hand controller trigger about halfway down while you give the vehicle a slight push from behind. After 3-4 laps your vehicle will run properly.
2. Sometimes oxidation may form on the track rails, and this may cause your car to stall. If this happens, you'll have to remove the oxidation. Using the supplied sandpaper, GENTLY rub the track rails. Don't rub hard – rails are clean when they're shiny. After cleaning, wipe the track with a soft, clean, lint-free cloth to remove any residue (don't use tissue or paper towels).

**NEVER** use steel wool to clean your track: severe damage can result if a fiber of steel wool is picked up by the magnets in your car's motor. Use only very fine sandpaper for cleaning.

3. Sometimes debris can accumulate in the track slots. If this happens, use a toothpick to clear the debris from the slots.

## C. VEHICLE CLEANING

### 1. CLEANING TIRES

Dirty tires can cause your car to lose traction and spin. To clean the tires, place a piece of adhesive tape on a hard, flat surface, with the sticky side facing up. Roll the rear tires across the tape until they're clean.

### 2. CLEANING AXLE

Lint may collect around your car's axles: this may cause the car to run slowly. Use tweezers or a toothpick to remove lint as shown.

## D. ALIGNMENT

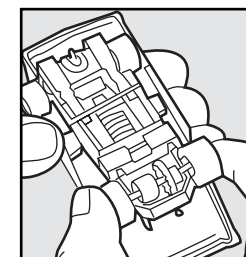
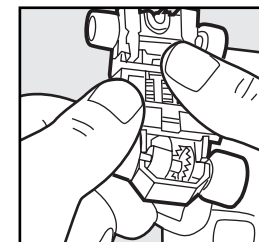
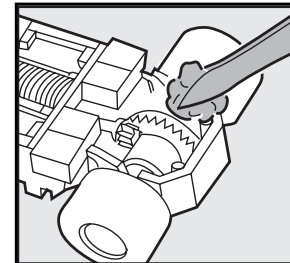
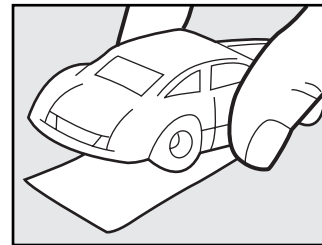
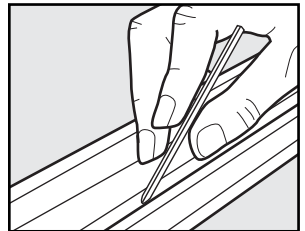
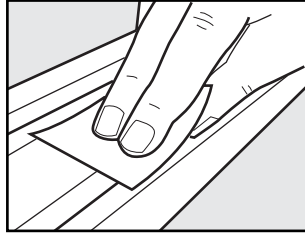
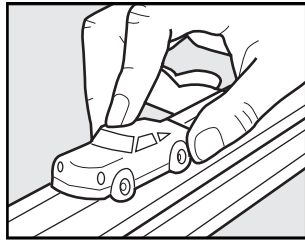
### 1. AXLE ALIGNMENT

Your car's axle assembly may become "dislocated" from the chassis as a result of a sudden impact. To realign it, snap the assembly back into the chassis.

**DO NOT** use any type of tool to snap the chassis back in place. Use only your fingers.

### 2. CHASSIS ALIGNMENT

Occasionally check the position of the car's body to make sure it is properly aligned and not rubbing against the tires. If necessary, carefully snap chassis back onto the body tabs, as shown.



## E. CONTACTS

### 1. CLEANING CONTACTS

Regularly clean your car's contacts to remove oxidation. Using a pencil eraser, as shown, carefully scrub the contacts. Do not apply too much pressure, or you may bend contacts. **DO NOT USE STEEL WOOL.**

**Worn-out contacts can be replaced.**

### 2. CONTACT REPLACEMENT

Your vehicle's contacts should last a minimum of 8-10 total hours of racing, with regular cleaning. You may need to replace the contacts if they become overly worn or bent...or if they become dislodged after an impact.

**The best way to replace contacts is one at a time, using the remaining contact assembly as a guide. Be careful not to bend the contacts out of shape (especially wide slotted end).**

- a. Hold chassis bottom side up. Hold the spring as shown (with your thumb on one side of the chassis and your forefinger on the other). You'll need to hold the spring securely throughout the assembly process.
- b. Hook the narrow end of the contact under the motor shaft. Hook the curved side tab of the contact over the spring; the spring will be held in place by the curved tab. Place the wide (slotted) end of the contact into place, with the chassis tab through the slot. Making sure not to over bend the contact slot.
- c. Still holding the spring securely, turn the chassis over. You may need to press the top of the contact into place with the tip of a pencil. When properly installed, the contact will spring back when pushed.

## F. HEAT SHIELD

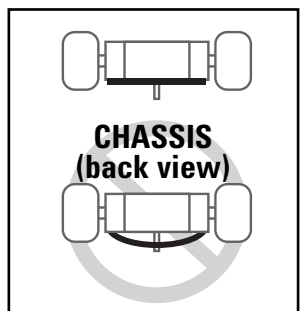
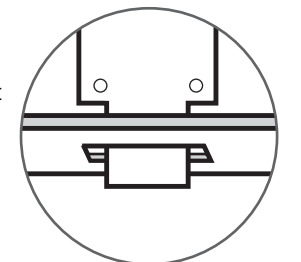
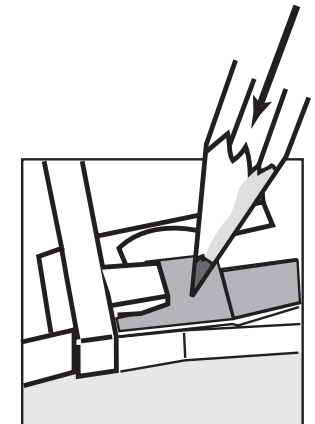
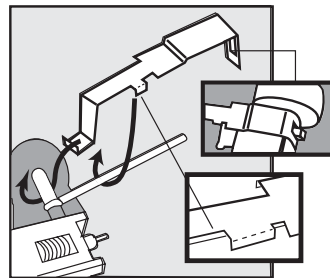
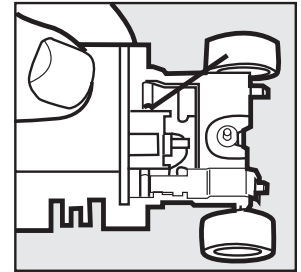
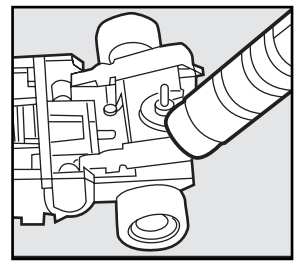
### 1. INSTALLATION

The heat shield is an important component, and it must be correctly installed for proper vehicle operation. Make sure the side tabs of the heat shield are properly inserted in the chassis slots, as shown. If the heat shield is not correctly installed, it may interfere with vehicle movement.

### 2. CLEANING

Occasionally dust and debris may build up under the vehicle's heat shield, interfering with operation. To check for this problem, stop racing and let the vehicle sit for 5 minutes. Remove the heat shield and gently blow out any dust. Reinstall the heat shield as described above.

**Don't operate any vehicle without a heat shield. If the heat shield is lost, or can't be installed properly, please contact Customer Service at the toll-free number shown in this manual.**



## Battery Safety Information

In exceptional circumstances batteries may leak fluids that can cause a chemical burn injury or ruin your product. To avoid battery leakage:

- Non-rechargeable batteries are not to be recharged.
- Rechargeable batteries are to be removed from the product before being charged (if designed to be removable).
- Rechargeable batteries are only to be charged under adult supervision (if designed to be removable).
- Do not mix alkaline, standard (carbon-zinc), or rechargeable (nickel-cadmium) batteries.
- Do not mix old and new batteries.
- Only batteries of the same or equivalent type as recommended are to be used.
- Batteries are to be inserted with the correct polarity.
- Exhausted batteries are to be removed from the product.
- The supply terminals are not to be short-circuited.
- Dispose of battery(ies) safely.
- Do not dispose of this product in a fire. The batteries inside may explode or leak.

### 90-DAY LIMITED WARRANTY Cars SLOT CAR RACING

Mattel, Inc. warrants to the original consumer purchaser that this product will be free of defects in material and workmanship for ninety (90) days (unless specified in alternate warranties) from the date of purchase. Mattel will replace the product in the event of such a defect within the warranty period.

In the event of a defect covered under this warranty, first call the toll-free number listed below. Many problems can be solved in this manner. If necessary, you will be instructed to return the product, postage prepaid and insured, to the address below. Enclose your name, address, dated sales receipt, and a brief explanation of the defect. Replacement and return shipment will be free of charge.

This warranty does not cover damage resulting from unauthorized modification, accident, misuse or abuse. If the product is returned without a dated sales receipt the product may be excluded from coverage under this warranty.

Mattel's liability for defects in material and workmanship under this warranty shall be limited to replacement, and in no event shall we be responsible for incidental, consequential, or contingent damages (except in those states that do not allow this exclusion or limitation).

This warranty is exclusive, and is made in lieu of any express or implied warranty. **Valid only in U.S.A.** This warranty gives you specific legal rights and you may have other rights, which vary from state to state. Some states do not allow the exclusion of incidental or consequential damages, so the above exclusions or limitations may not apply to you.

TOLL-FREE NUMBER: 1-888-557-8926 (**valid only in U.S.A.**)  
Hours: 8:00 A.M. - 5:00 P.M. Eastern Time; Monday - Friday. Expect some delay in January following the holiday season. Please be patient and keep trying the toll-free number.

**ADDRESS FOR RETURNS: CONSUMER RELATIONS  
636 GIRARD AVENUE  
EAST AURORA, NY 14052**

© Disney/Pixar



Mattel, Inc., 333 Continental Blvd., El Segundo, CA 90245 U.S.A. Consumer Relations: 1-800-524-8697. [service.mattel.com](http://service.mattel.com) Mattel U.K. Ltd., Vanwall Business Park, Maidenhead SL6 4UB. Helpline 01628500303 Mattel Australia Pty Ltd., Richmond, Victoria. 3121. Consumer Advisory Service - 1300 135 312. Mattel East Asia Ltd., Room 1106, South Tower, World Finance Centre, Harbour City, Tsimshatsui, HK, China. Diimport & Diedarkan Oleh: Mattel SEA Ptd Ltd.(993532-P) Lot 13.5, Menara Lien Hoe, Persiaran Tropicana Golf Country Resort, 47410 PJ. Tel:03-78803817, Fax:03-78803867.



# TROUBLESHOOTING GUIDE

**If you have questions or difficulty operating your Race Set – the cause is often a simple problem. And there’s often a simple fix. Usually a quick “pit stop” will get you racing again. Please check below, and then turn to the Maintenance section of the Instruction Manual for detailed information.**

---



## **If your vehicle stops...**

- You may need to clean the track. *Please see Maintenance section: Track Cleaning.*
  - You may need to clean the vehicle. *Please see Maintenance section: Vehicle Cleaning.*
  - Check power connections. *Please see Power Connection section.*
  - Check your vehicle’s alignment. *Please see Maintenance section: Alignment.*
  - Check your vehicle’s contacts. *Please see Maintenance section: Contacts.*
  - Check to make sure track sections are properly connected. *Please see Basic Track Assembly section.*
  - Check your vehicle’s heat shield. *Please see Maintenance section: Heat Shield.*
- 



## **If your vehicle runs slowly or hesitates...**

- You may need to clean the track. *Please see Maintenance section: Track Cleaning.*
- You may need to clean the vehicle. *Please see Maintenance section: Vehicle Cleaning.*
- Check your vehicle’s alignment. *Please see Maintenance section: Alignment.*
- Check your vehicle’s contacts. *Please see Maintenance section: Contacts.*
- Check to make sure track sections are properly connected. *Please see Basic Track Assembly section.*
- Check your vehicle’s batteries. *Check battery connector and replace with fresh alkaline battery.*



## **If your vehicle spins out or flies off the track...**

- You may need to clean the vehicle. *Please see Maintenance section: Vehicle Cleaning.*
  - Check your vehicle’s alignment. *Please see Maintenance section: Alignment.*
  - Check to make sure track sections are properly connected. *Please see Basic Track Assembly section.*
  - Check your vehicle’s heat shield. *Please see Maintenance section: Heat Shield.*
  - Check your vehicle for a missing guide pin. *Please see Maintenance section: Chassis Parts.*
- 



## **If your vehicle runs in on one lane, but not the other...**

- You may need to clean the track. *Please see Maintenance section: Track Cleaning.*
  - You may need to clean the vehicle. *Please see Maintenance section: Vehicle Cleaning.*
  - Check power connections. *Please see Power Connection section.*
  - Check your vehicle’s alignment. *Please see Maintenance section: Alignment.*
  - Check your vehicle’s contacts. *Please see Maintenance section: Contacts.*
  - Check to make sure track sections are properly connected. *Please see Basic Track Assembly section.*
  - Check your vehicle’s heat shield. *Please see Maintenance section: Heat Shield.*
- 



## **If your vehicle runs backwards...**

- Your vehicle’s rear axle assembly may be installed backwards. *Please see Maintenance section: Chassis Parts.* Remove the rear axle assembly, reverse it and reinstall.

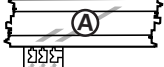


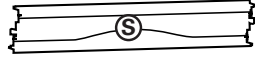

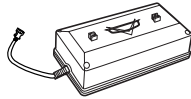


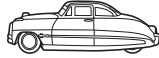


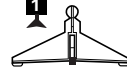

**IF YOU STILL HAVE PROBLEMS –  
OR IF ANY PARTS ARE MISSING OR DAMAGED – DON'T RETURN YOUR  
RACE SET TO THE STORE! CALL OUR RACING SUPPORT TEAM TOLL-FREE AT  
1-888-557-8926 FOR HELP.**

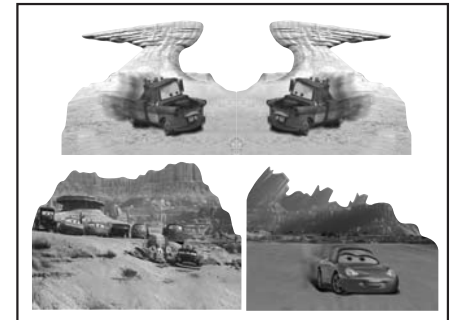


# ASSEMBLY MAP

*This page shows the contents list and large-scale Layout Drawings of the fully-assembled track (tracks are not drawn to scale). You'll need to refer to it as you assemble your race set. Refer to the Instruction Sheet for detailed step-by-step instructions for setting up and using your race set.*

## CONTENTS LIST

- 1  9" TERMINAL TRACK
- 1  6" STRAIGHT
- 6  9" RADIUS CURVE
- 1  15" SQUEEZE
- 2  CONTROLLERS
- 1  BATTERY PACK
- 8  GUARDRAILS
- 1  VEHICLE
- 1  VEHICLE
- 6  CLIPS
- 1  SANDPAPER
- 2  #2 SUPPORTS
- 1  CARD BOARD



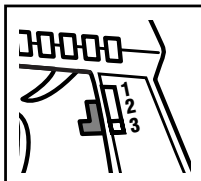
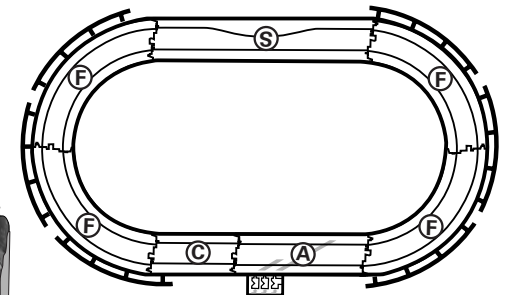
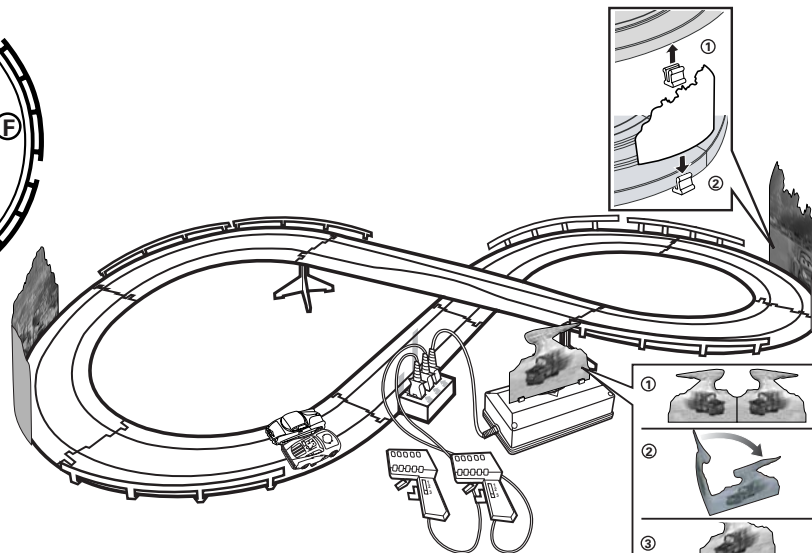
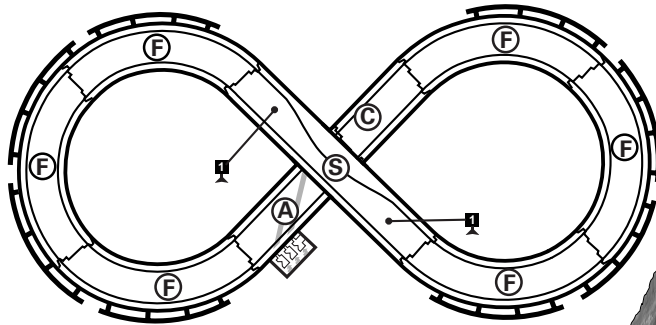
## MAIN LAYOUT DRAWING

*Refer to the package for color photographs of the assembled layouts.*

## ALTERNATE LAYOUT DRAWING

*Use either a diorama or a guardrail on the outside of the curves.*

**IF ANY PARTS ARE MISSING OR DAMAGED - DON'T RETURN YOUR RACE SET TO THE STORE! CALL OUR RACING SUPPORT TEAM TOLL-FREE AT 1-888-557-8926 FOR HELP.**



1 = Beginner  
2 = Average player  
3 = Skilled player

