

PAUSE

At any time during any song you can press this button to pause the song. Press it again to resume playing.

TEMPO

Press the arrows up or down to speed or slow the tempo of a song. Press the center button to return to the original tempo of the song.

NOTE TO PARENTS: Remember to set the tempo at a slow pace at first for the beginner. As your child progresses and learns to play, you can gradually set the tempo at a faster rate.

INSTRUMENT SELECT

Press this button to change the sound of the keyboard. You can select up to 5 different instrument sounds!

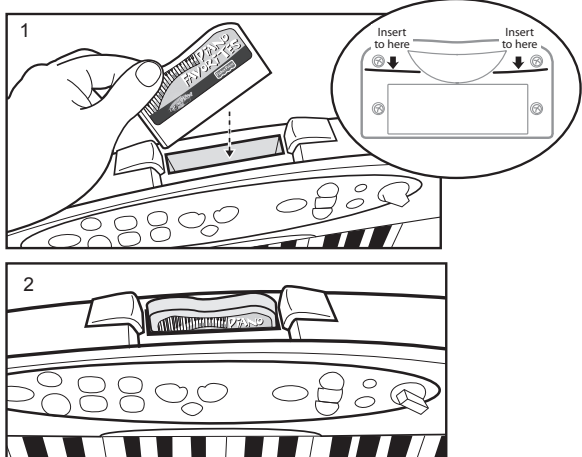
The following knob only functions in PIANO PLAY:

VOLUME

This knob controls the volume of the built-in speakers when the keyboard is in PIANO PLAY. The built-in speakers do not function when the keyboard is in TV PLAY – the keyboard sound will then come from your TV speakers. This volume switch does NOT control the volume of your TV speakers.

HOW TO PLAY

NOTE: Before you begin play, be sure the software cartridge is fully inserted into the keyboard as shown.



There are 2 ways to play *I CAN PLAY™ PIANO*:

• TV PLAY

Play songs and games on your TV screen.

• PIANO PLAY

Play with the keyboard away from your TV.

TV PLAY

For TV PLAY, make sure the TV / PIANO switch is set to the "TV" position.



3

MAIN MENU

After turning on your TV and keyboard, you will see several introductory screens followed by the MAIN MENU.

Select one of the choices from the MAIN MENU using the MENU SCROLL arrows. Then press ENTER.



HOW TO PLAY

Choosing HOW TO PLAY from the MAIN MENU displays a brief demonstration of how to play a song in SONGS mode.

SONGS

Choose a song using the MENU SCROLL arrows. Then press ENTER.



Playing Level

• Once a song has been selected, you must choose your Playing Level.

- Level 1 is for beginners – fewer notes will be played in each song.
- Level 2 is more advanced – more notes will be played in each song.

• Choose your Playing Level using the MENU SCROLL arrows. Then press ENTER.



4

Adults Note:

Adult supervision required. Regularly examine the toy for damage to the cord, plug, enclosure and other parts. In the event of any damage, don't use the toy until the damage has been properly repaired.

- Do not connect to more than the recommended number of power supplies.
- This toy is not intended for children under 3 years old.
- The toy must only be used with the included transformer.
- This transformer is not a toy.

FCC NOTE (UNITED STATES ONLY)

This equipment has been tested and found to comply with the limits for a Class B digital device, pursuant to part 15 of the FCC rules. These limits are designed to provide reasonable protection against harmful interference in a residential installation. This equipment generates, uses and can radiate radio frequency energy and, if not installed and used in accordance with the instructions, may cause harmful interference to radio communications. However, there is no guarantee that interference will not occur in a particular installation. If this equipment does cause harmful interference to radio or television reception, which can be determined by turning the equipment off and on, the user is encouraged to try to correct the interference by one or more of the following measures:

Reorient or relocate the receiving antenna.
Increase the separation between the equipment and receiver.
Connect the equipment into an outlet on a circuit different from that to which the receiver is connected.

Consult the dealer or an experienced radio/TV technician for help.
Mattel Inc. 333 Continental Blvd. El Segundo, CA (310) 252-2400

NOTE: Changes or modifications not expressly approved by the manufacturer responsible for compliance could void the user's authority to operate the equipment.

J7522-0920-G1

PIANO FAVORITES
Heart & Soul
© 1998 FAMOUS MUSIC LLC (ASCAP)
Fisher-Price, Inc., a subsidiary of Mattel, Inc., East Aurora, NY 14052 U.S.A.
PRINTED IN CHINA.
Manufactured for Fisher-Price. ©2006 Mattel, Inc. All Rights Reserved.
Fisher-Price and the Fisher-Price logo are U.S. trademarks of Mattel, Inc.
Packaging and address should be retained for future reference.
Mattel Canada Inc., Mississauga, Ontario L5R 3W2. You may call us free at 1-800-432-5437.
Mattel U.K. Ltd., Vanwall Business Park, Maidenhead SL6 4UB. Helpline 01628500303.
Mattel Australia Pty. Ltd., Richmond, Victoria, 3121. Consumer Advisory Service - 1300 135 312.
Mattel East Asia Ltd., Room 1106, South Tower, World Finance Centre, Harbour City, Tsimshatsui, HK, China.
Distributor & Dealer: Mattel SEA Ptd Ltd (995332-P) Lot 13.5, 13th Floor, Menara Lien Hoe,
Persiaran Tropicana Golf Country Resort, 47410 PJ. Tel: 03-78803817, Fax: 03-78803867.
Mattel, Inc., 333 Continental Blvd., El Segundo, CA 90245 U.S.A. Consumer Affairs 1 (800) 524-Toys.

Questions?
service.fisher-price.com
In US and Canada
1-800-432-5437



ITEM NO. J7522

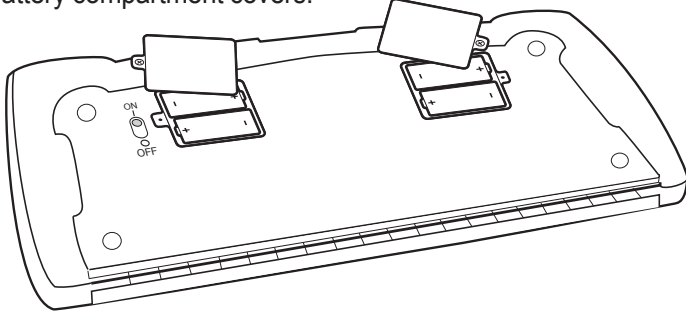


Keep this **USER'S MANUAL** for future reference as it contains important information.

BATTERY INSTALLATION

I CAN PLAY™ PIANO can function with either an AC/DC adaptor that plugs into your wall or with batteries. (See the QUICK SET-UP INSTRUCTIONS for further detail)

- The battery compartments are located on the back of the keyboard.
- Unscrew and lift each cover away from its battery compartment.
- Insert 4 "C" batteries into the two compartments as shown.
- For longest life and best performance use only alkaline batteries.
- Replace the battery compartment covers.



BATTERY SAFETY INFORMATION

In exceptional circumstances batteries may leak fluids that can cause a chemical burn injury or ruin your toy (product). To avoid battery leakage;

- Non-rechargeable batteries are not to be recharged.
- Rechargeable batteries are to be removed from the product before being charged (if designed to be removable).
- Rechargeable batteries are only to be charged under adult supervision (if designed to be removable).
- Do not mix alkaline, standard (carbon-zinc), or rechargeable (nickel-cadmium) batteries.
- Do not mix old and new batteries.
- Only batteries of the same or equivalent type as recommended are to be used.
- Batteries are to be inserted with the correct polarity.
- Exhausted batteries are to be removed from the product.
- The supply terminals are not to be short-circuited.
- Dispose of battery(ies) safely.
- Do not dispose of this product in a fire. The batteries inside may explode or leak.

NOTE: When the keyboard is plugged into the wall, the batteries are not being used. It is best to remove the batteries from the battery compartment if the keyboard is normally used with the AC/DC adaptor to avoid battery leakage.

1

Now you're ready to play a song!
The following screen configuration will appear:



- The background music will start to play.
- Colored, vertical guidelines for the first few notes of the song will appear, leading to the keys that will need to be played.
- Small colored images begin to travel upward on the screen over these vertical guidelines.
- Press the correct colored key on the keyboard as the image passes over the horizontal line located over each key on the screen.
- The game will keep track of how many keys are correctly pressed at the right time.
- After the child has completed the song, the screen will display the child's score out of 100%.
- To replay the current song, the child is prompted to press any key on the keyboard to play again.
- At this point, he or she can also press the HOME button to return to the main menu, or press the ENTER button to return to the appropriate sub-menu.

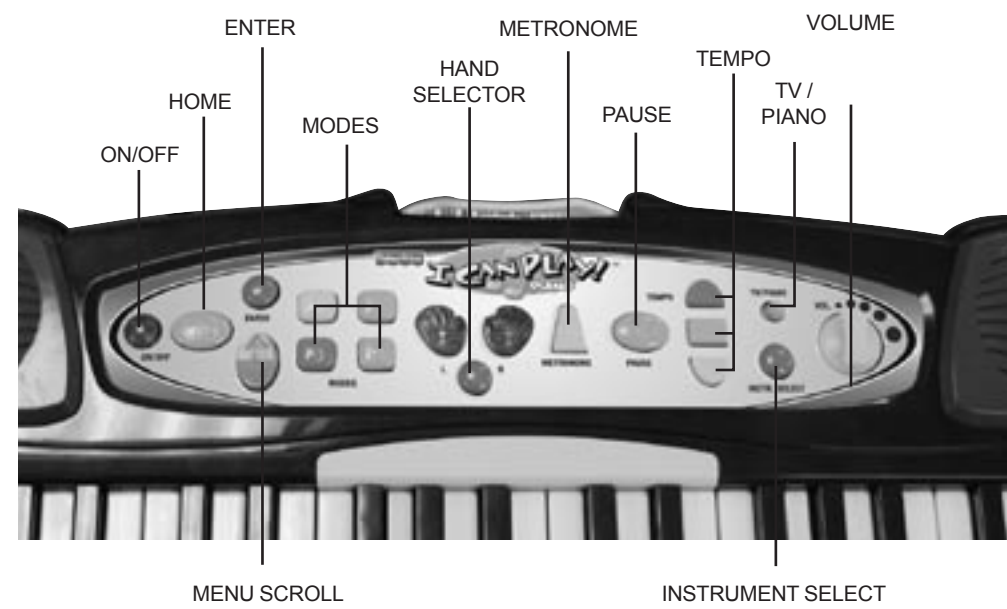
Mode Select

There are 4 distinct modes of song play, which move the child from beginner to advanced player.

- Mode 1 – The images move upwards toward the color-coded keys.
- Mode 2 – The images move horizontally toward the color-coded keys
- Mode 3 – The images are now colored musical notes displayed on a colored musical staff.
- Mode 4 – The images are now black musical notes, which show their note names, displayed on a musical staff.

5

BUTTON FUNCTIONS



ON/OFF

Press and hold this button down until it is lit to turn the unit on. Press and hold this button down again until the light goes off to turn the unit off. Disregard any other buttons that may light during this process.

TV / PIANO

Set this switch to select either TV PLAY or PIANO PLAY.

The following buttons and switches only function in TV PLAY:

HOME

At any time during play you can press this button to return to the main menu.

MENU SCROLL

Press the arrow up or down to scroll through the onscreen menus.

ENTER

Press this button to select a menu choice.

MODES

At any time during song play you can press one of these buttons to select one of the 4 modes.

HAND SELECTOR

Select whether you want to play with your right hand, your left hand, or both.

METRONOME

Press this button to turn on a pulse tone that will click to the beat of the music to help you keep the tempo.

2

Choose a mode by pressing one of the 4 MODE buttons. Begin with MODE 1. As your playing improves, progress to the next mode until you master all 4 modes!

Song Select

- At any time during a song you can press the ENTER button to return to the Song Selector Menu to choose a new song.
- Pressing the HOME button at any time will return you to the Main Menu

GAMES

In addition to songs, each song cartridge features two special games. To play a game, select GAMES from the MAIN MENU.

FREESTYLE

Choosing Freestyle from the MAIN MENU allows the child to try improvisation!

A keyboard appears on the screen with several highlighted notes. Background music then begins to play, and the child is prompted to play along with the background music. The child is free to play any notes he wants, but the notes that have been highlighted are suggested notes that will harmonize well with the background music.

PIANO PLAY

In addition to playing games on your TV, *I CAN PLAY™ PIANO* can also be used as a stand-alone keyboard.

- Simply disconnect the cable from your TV and the unit will play like a regular keyboard.
- Set the TV / PIANO switch to the "PIANO" position.
- Adjust the volume of the built-in speakers with the VOLUME control.

NOTE: A software cartridge must still be inserted into the keyboard in order for PIANO PLAY to function.



6