

The cosmetics in this product have been sealed with a tamper-evident seal. If this seal is broken, call Mattel Consumer Affairs at 1-800-524-TOYS for a replacement.

CLEANING:

- If hair colorant gets on fingers, wash with warm soapy water.
- Normal laundering should remove stains from most materials.
 - Do not use pre-wash or chlorine bleach.
 - Repeat laundering on severe stains.

HAIR COLORANT INGREDIENTS:

Water, Titanium Dioxide, Triethanolamine, Hydroxypropyl Methylcellulose, Carbomer, Phenoxyethanol, Methylparaben, Butylparaben, Ethylparaben, Propylparaben. May contain: Carmine, FD&C Blue No. 1 and FD&C Yellow No.5.

Hair colorant net. 3.0 ml, .10 fl. oz.

2 YEAR LIMITED WARRANTY

Mattel, Inc. warrants to the original consumer purchaser of any product it manufactures that the product will be free of defects in material or workmanship for two years (unless specified in alternate warranties) from the date of purchase. If defective, return the product along with proof of the date of purchase, postage prepaid, to Consumer Adjustment Center, 15930 E. Valley Boulevard, City of Industry, California 91744 for replacement or refund at our option. This warranty does not cover damage resulting from accident, misuse, or abuse. **VALID ONLY IN U.S.A.** This warranty gives you specific legal rights and you may also have other rights which vary from state to state.

Send only the product to the address above. Send all correspondence to Consumer Affairs, Mattel, Inc., 333 Continental Blvd., El Segundo, CA 90245-5012, U.S.A. Or you may phone us toll-free at 1-800-524-TOYS, Monday through Thursday: 8:00 a.m.-5:00 p.m. PST (11:00 a.m.-8:00 p.m. EST); Friday: 8:00 a.m.-12:30 p.m. PST (11:00 a.m.-3:30 p.m. EST).

WARNING:
CHOKING HAZARD - Small parts.
 Not for children under 3 years.

CONSUMER INFORMATION

MATTEL TOYS

YOU CAN TELL IT'S MATTEL! Dolls, Barbie® dolls, and other toys are made with a tamper-evident seal. If this seal is broken, call Mattel Consumer Affairs at 1-800-524-TOYS. For more information, visit our website at www.mattel.com. ©1997 Mattel, Inc. All rights reserved.

1 (800) 524-TOYS

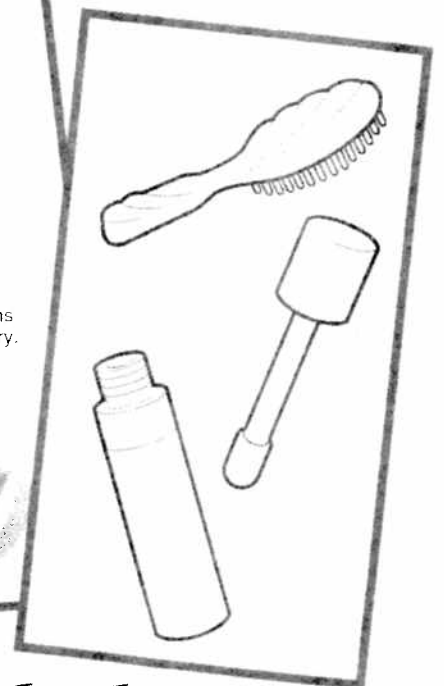
CE CONFORMS TO THE SAFETY REQUIREMENTS OF ASTM F963.

We are dedicated to quality products.



PERFECT PINK™ Teresa® Doll

INSTRUCTIONS



Fashions may vary.

Doll cannot stand alone.

CONTENTS

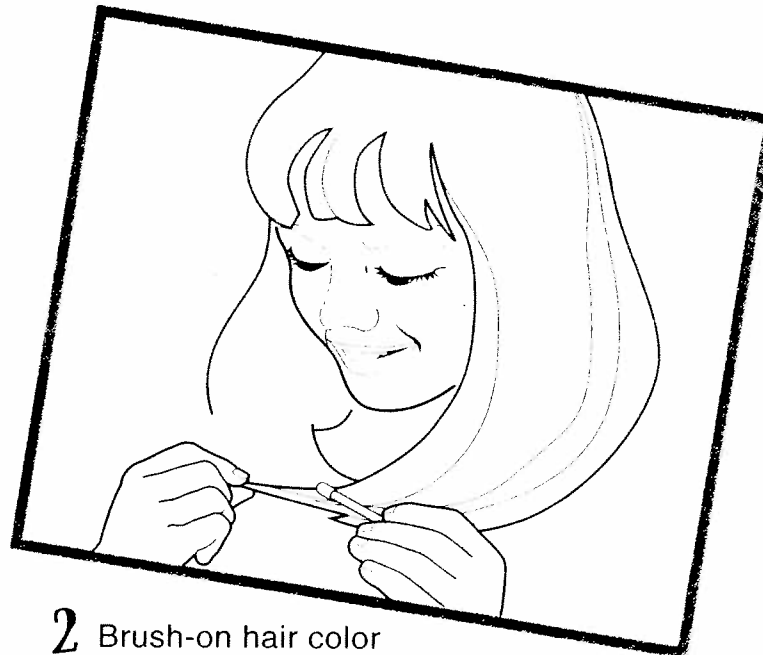
Please remove everything from the package and compare to the contents shown here. If any items are missing, please call 1-800-524-TOYS.

PERFECT PINK™ Teresa Doll

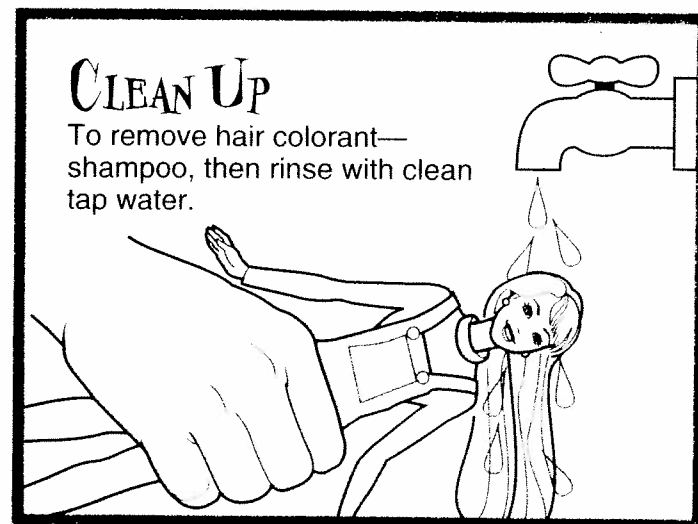


Hair colorant is non-toxic and washable, but may stain certain surfaces. Precaution should be taken to keep make-up away from carpets, fabrics and varnished/unvarnished surfaces.

1 Brush-on pink hair color for Teresa® doll and doll friends!



2 Brush-on hair color for you, too!



CLEAN UP

To remove hair colorant—shampoo, then rinse with clean tap water.

Warning: Hair colorant is intended for doll hair and child's hair only. Keep hair color and brush away from child's eyes.

Colors, hair colorant, applicator and decorations may vary from that shown. For use with Teresa®, Barbie®, Christie®, and Teen Skipper™ dolls. Fashions not for use with other Skinner® dolls.