



20017-092

# BEYOND Pink

featuring  
**Barbie**  
Doll

**WARNING:**  
CHOKING HAZARD - Small parts.  
Not for children under 3 years.

## TWO-YEAR LIMITED WARRANTY

Mattel, Inc. warrants to the original consumer purchaser that this product will be free from defects in material or workmanship for 2 years (unless otherwise specified in alternate warranties) from the date-of-purchase. If defective, return the product along with proof of the date-of-purchase, postage prepaid, to Consumer Adjustment Center, 15930 E. Valley Boulevard, City of Industry, CA 91744 for replacement or refund at our option. This warranty does not cover damage resulting from accident, misuse or abuse. **VALID ONLY IN U.S.A.** This warranty gives you specific legal rights and you may also have other rights which vary from state to state. Send only the product to the address above. Send all

correspondence to Consumer Affairs, Mattel, Inc., 333 Continental Blvd., El Segundo, CA 90245-5012, U.S.A. Or you may phone us toll-free at 1-800-524-TOYS, Monday through Thursday: 8:00 a.m.-5:00 p.m. PST (11:00 a.m.-8:00 p.m. EST); Friday: 8:00 a.m.-12:30 p.m. PST (11:00 a.m.-3:30 p.m. EST).

### CONSUMER INFORMATION



**YOU CAN TELL IT'S MATTEL!** CALL us toll-free or write with any comments or questions about our products or service. Monday-Thursday, 8:00 a.m.-5:00 p.m. PST, 11:00 a.m.-8:00 p.m. EST. Friday, 8:00 a.m.-12:30 p.m. PST, 11:00 a.m.-3:30 p.m. EST. Outside U.S.A., see telephone directory for Mattel listing.  
Consumer Affairs, Mattel, Inc., 333 Continental Blvd., El Segundo, CA 90245 USA

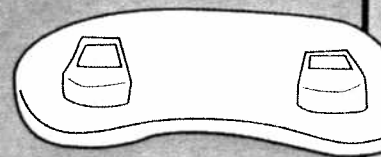
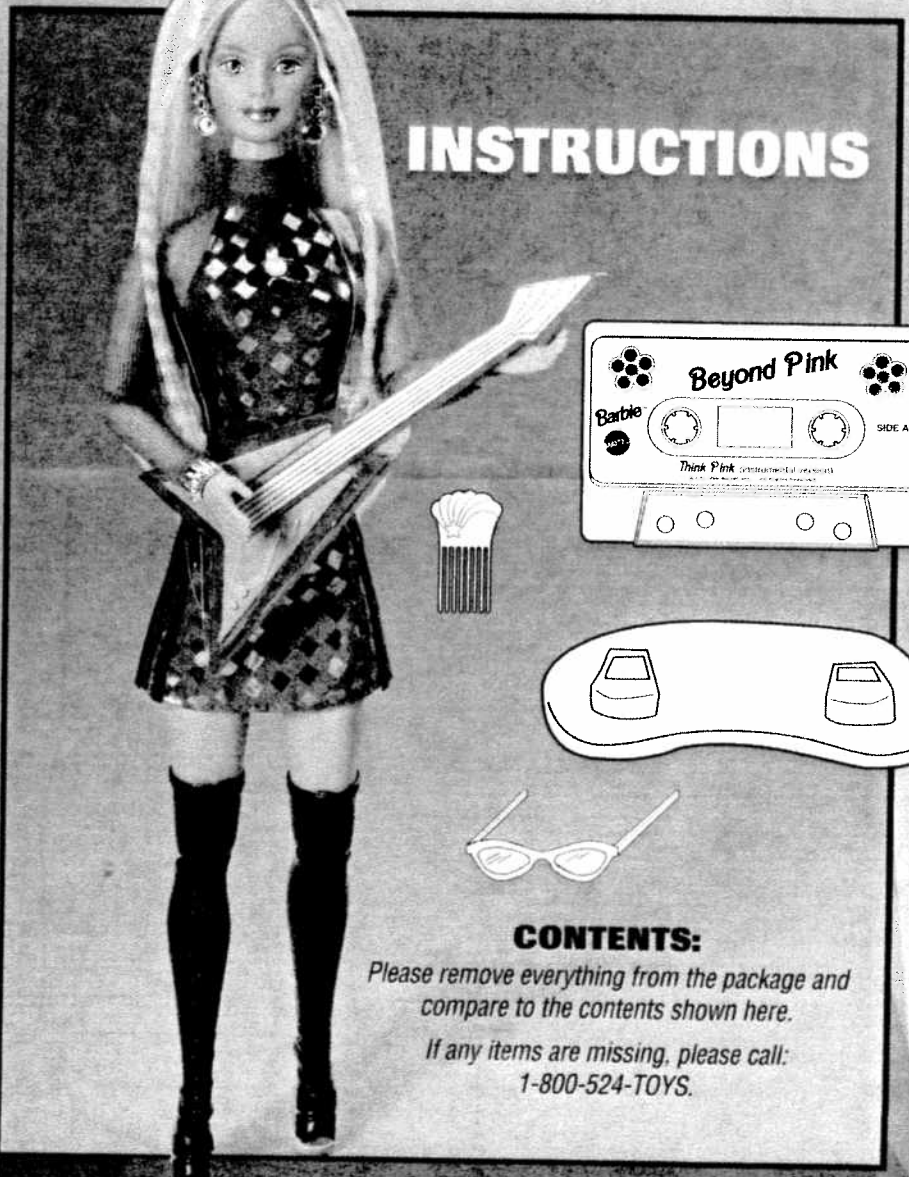
**1 (800) 524-TOYS**



CONFORMS TO THE SAFETY REQUIREMENTS OF ASTM F963.

We are dedicated to quality products.

## INSTRUCTIONS

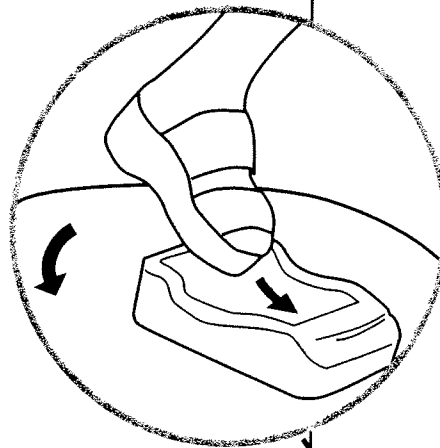


### CONTENTS:

Please remove everything from the package and compare to the contents shown here.

If any items are missing, please call:  
**1-800-524-TOYS.**

**1** Place doll's feet (toe first) into doll stand, then press heels down until they are firmly locked into position.

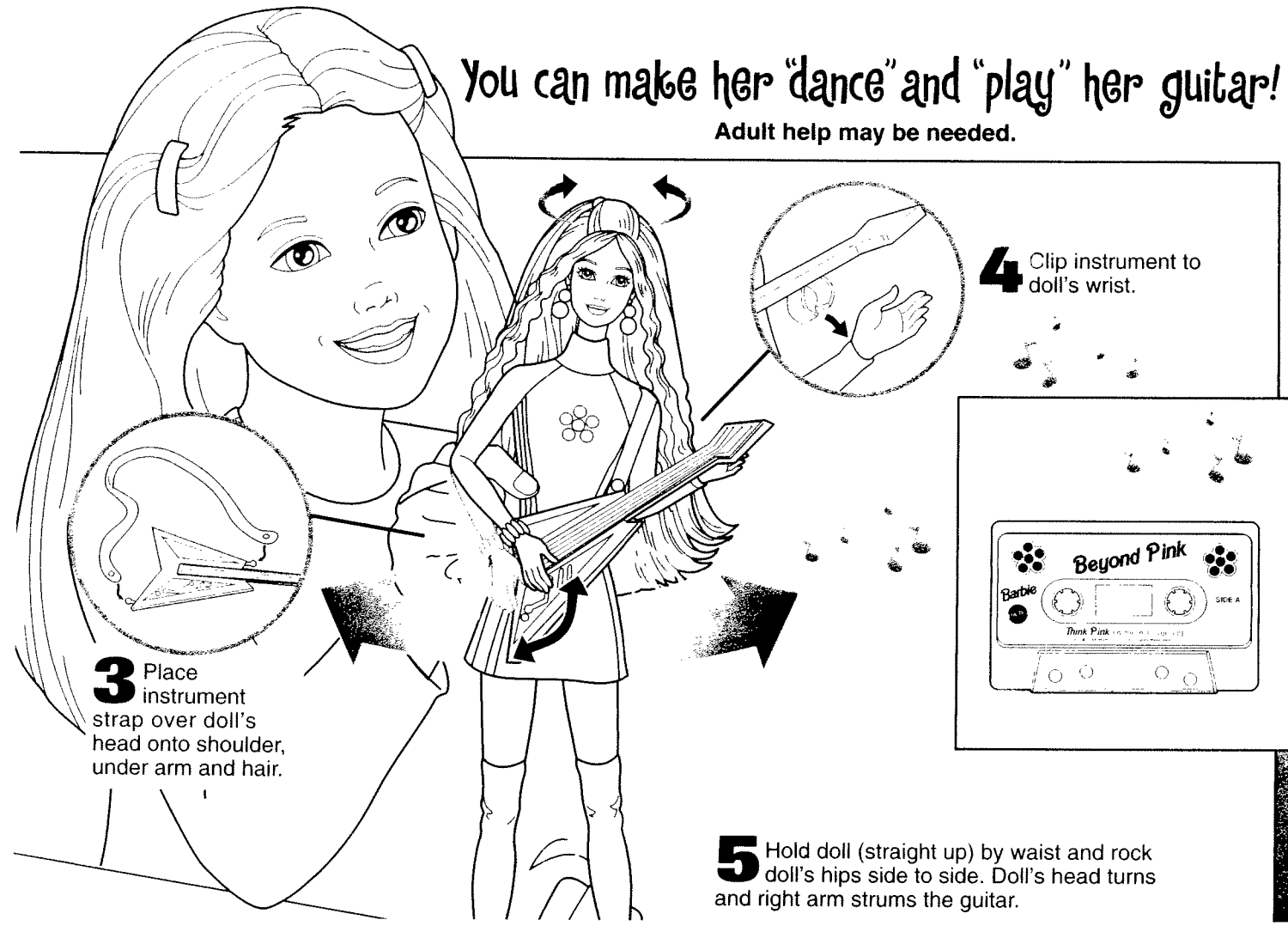


**2** Bend doll's arms as shown.



# You can make her "dance" and "play" her guitar!

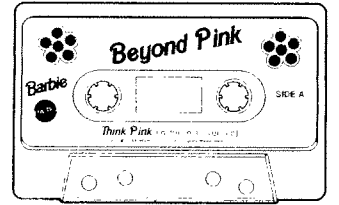
Adult help may be needed.



**3** Place instrument strap over doll's head onto shoulder, under arm and hair.

**4** Clip instrument to doll's wrist.

**5** Hold doll (straight up) by waist and rock doll's hips side to side. Doll's head turns and right arm strums the guitar.





Expose doll and accessories to light for 30 seconds to activate the glow-in-the-dark accents!

Barbie® and friends.



**IMPORTANT:** Color-change will last longer if you **DO NOT** expose glow-in-the-dark materials to chlorinated water, intense heat, or direct sunlight for prolonged periods of time.