



# VOX™ SECRET SECURITY SYSTEM

50975-0920



## INSTRUCTIONS

**Adult Assembly Required.**

### CONTENTS:

Batteries included are for demonstration purposes only. Requires 3 "AA" alkaline batteries.

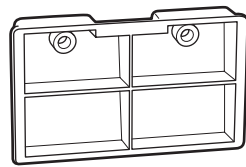
AGES 7+



VOX SECRET SECURITY UNIT



2 SCREWS



MOUNTING BRACKET

Please remove everything from the package and compare to the contents shown here. If any items are missing, please call: 1-800-524-TOYS. Requires three "AA" alkaline batteries (not included).

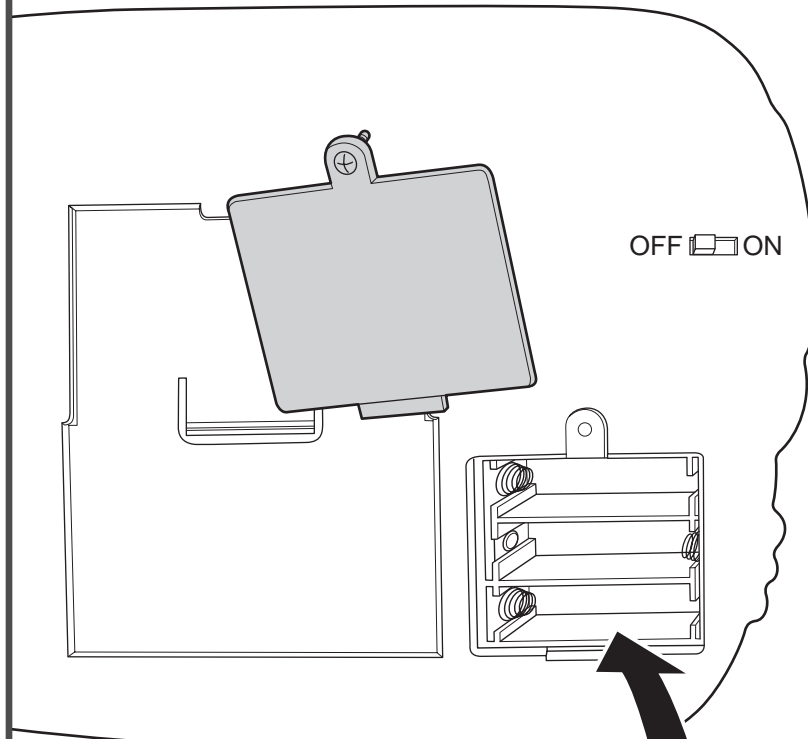
**Keep these instructions for future reference as they contain important information.**

Mattel, Inc., El Segundo, CA 90245 U.S.A. © 2001 Paramount Pictures and Viacom International Inc. All Rights Reserved. Nickelodeon, Jimmy Neutron Boy Genius and all related titles, logos and characters are trademarks of Viacom International Inc.

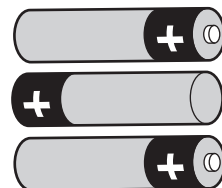
Mattel U.K. Ltd., Vanwall Business Park, Maidenhead SL6 4UB. Helpline 01628500303.

Mattel Australia Pty Ltd., Richmond, Victoria. 3121. Consumer Advisory Service 1 800 800 812 (valid only in Australia).

## BATTERY INSTALLATION / REPLACEMENT



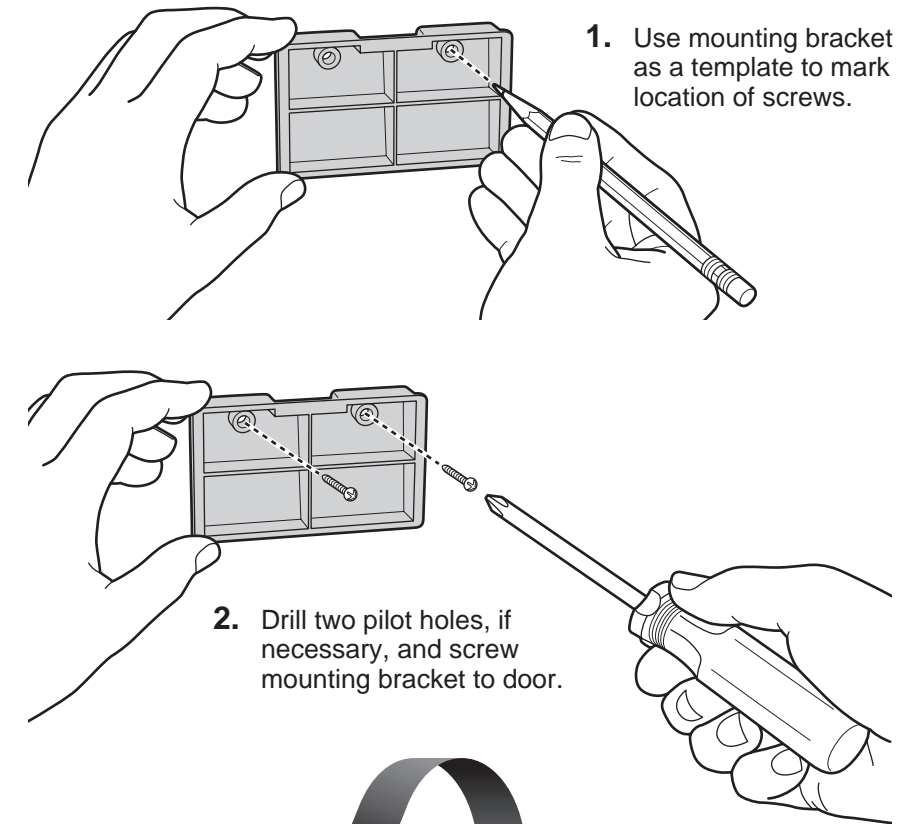
1. Loosen screw and remove battery cover (located on back of unit). Remove old batteries.
2. Install 3 "AA" alkaline batteries as shown.
3. Replace battery cover and tighten screw.



**Batteries should be changed when the VOX unit sounds scratchy or intermittent and cannot be understood.**

## INSTALLATION / MOUNTING

VOX must be mounted to door for motion sensors to operate properly.



1. Use mounting bracket as a template to mark location of screws.

2. Drill two pilot holes, if necessary, and screw mounting bracket to door.

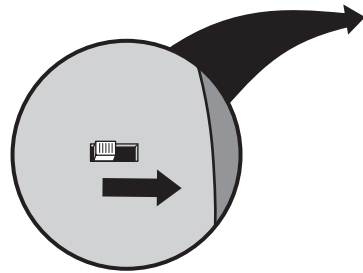


3. Slide VOX unit onto mounting bracket and gently pull down to lock unit in place.

## OPERATION

### WHEN YOU LEAVE:

1. CLOSE YOUR DOOR.



2. TURN THE POWER ON:

Slide switch (located on back of unit) to "ON" position.



3. SET THE SECRET CODE:

Push buttons on recessed hand to enter. Use any combination consisting of two to eight digits (e.g. – press the index finger, then the ring finger, then the middle finger, and then the pinky finger. This would be a four-digit code). The VOX will confirm your code entry by signalling with two short "CHIRP" sounds.



"Intruder"  
"Intruder"  
"Intruder"

4. THE SYSTEM IS ARMED:

If the room door is opened without entering the correct code, or if an incorrect code is entered, the VOX will flash lights and sound the alarm "INTRUDER, INTRUDER, INTRUDER".

### WHEN YOU RETURN:

1. ENTER YOUR SECRET CODE:

Push buttons on recessed hand in the same sequence you used to enter your secret code. The VOX will respond with, "WELCOME". If someone has opened your room or entered an incorrect code, the VOX will respond with, "WELCOME, YOU HAVE HAD 1 (2, 3, or MANY) INTRUDER(S)".

2. TURN POWER SWITCH OFF

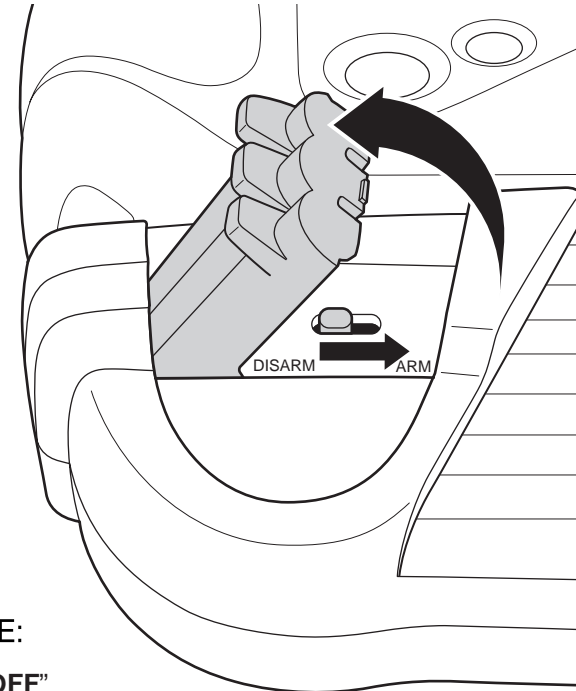
### DISABLE MOTION SENSOR:

1. TURN MOTION SENSOR OFF:

Open cover on front of VOX unit to access the disable switch. Slide switch to "DISARM" position. Door may be opened without setting off "INTRUDER" alarm.

2. REACTIVATE MOTION SENSOR:

Slide disable switch to "ARM" position. Motion sensor is reactivated.



### CHANGE SECRET CODE:

1. Turn power switch to "OFF" position and then back to the "ON" position.

2. ENTER NEW CODE:

See "Set The Secret Code" section.

**Parents:** Intruder alarm is loud. Deactivating the motion sensor will keep the alarm from sounding and interrupting the home.

### ALKALINE BATTERIES RECOMMENDED:

Toy may not function or operate with other types of batteries.

### BATTERY SAFETY INFORMATION:

1. Non-rechargeable batteries are not to be recharged.
2. Rechargeable batteries are to be removed from the toy before being charged.
3. Rechargeable batteries are only to be charged under adult supervision.
4. Do not mix alkaline, standard (carbon-zinc), or rechargeable (nickel-cadmium) batteries.
5. Do not mix old and new batteries.
6. Only batteries of the same or equivalent type as recommended are to be used.
7. Batteries are to be inserted with the correct polarity.
8. Exhausted batteries are to be removed from the toy.
9. The supply terminals are not to be short-circuited.
10. Dispose of batteries safely. Do not dispose of in a fire as the batteries may explode or leak.
11. Products with non-replaceable batteries are not to be disposed of in a fire as the batteries inside may explode or leak. Dispose of batteries safely.

### 90-DAY LIMITED WARRANTY

Mattel, Inc. warrants to the original consumer purchaser that this product will be free of defects in material or workmanship for ninety days (unless specified in alternate warranties) from the date of purchase. If defective, return the product along with proof of the date of purchase, postage prepaid, to Consumer Relations, 636 Girard Avenue, East Aurora, New York 14052 for replacement or refund at our option. This warranty does not cover damage resulting from unauthorized modification, accident, misuse, or abuse. In no event shall we be responsible for incidental, consequential, or contingent damages (except in those states that do not allow this exclusion or limitation). **Valid only in U.S.A.** This warranty gives you specific legal rights and you may also have other rights which vary from state to state. Some states do not allow the exclusion of incidental or consequential damages, so the above limitations may not apply to you.

Send only the product to the address above. Send all correspondence to Consumer Relations, Mattel, Inc., 333 Continental Blvd., El Segundo, California 90245-5012, U.S.A. Or you may phone us toll-free at 1-800-524-TOYS, Monday–Friday, 8:00 a.m.–6:00 p.m. Eastern Time. Outside U.S.A., see telephone directory for Mattel listing.

### CONSUMER INFORMATION

**YOU CAN TELL IT'S MATTEL!** Call us toll-free or write with any comments or questions about our products or service. Monday–Friday, 8:00 a.m.–6:00 p.m. Eastern Time. Outside U.S.A., see telephone directory for Mattel listing. Consumer Relations, Mattel, Inc., 333 Continental Blvd., El Segundo, CA 90245 U.S.A.

1 (800) 524-TOYS

CE CONFORMS TO THE SAFETY REQUIREMENTS OF ASTM F963. We are dedicated to quality products.