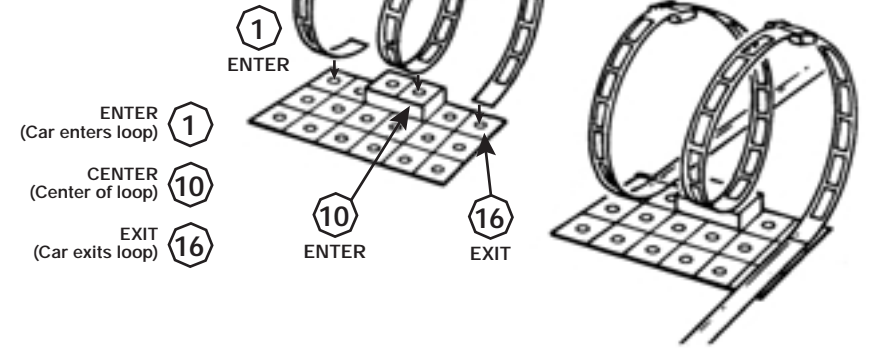


**CAR-CHALLENGING SUPER LOOP LAYOUTS**

Match numbers in column to numbers on base when assembling the loops. Attach track to loops ends

For best results rotate the loop joiners in the base to help your cars complete the loops.



**COLUMN**

ENTER 7  
 CENTER 9  
 EXIT 6

**COLUMN**

ENTER 1  
 CENTER 10  
 EXIT 16

ENTER 7  
 CENTER 15  
 EXIT 5

ENTER 12  
 CENTER 11  
 EXIT 10

**EASY-RACING SINGLE LOOP LAYOUTS**

**COLUMN**

ENTER 7  
 EXIT 1  
 ENTER 10  
 EXIT 16

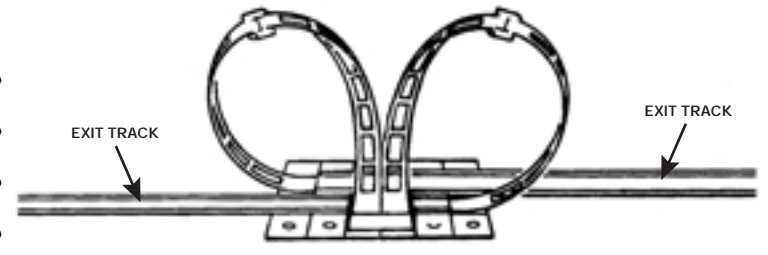
**COLUMN**

ENTER 7  
 EXIT 1  
 ENTER 10  
 EXIT 16

ENTER 7  
 EXIT 3  
 ENTER 10  
 EXIT 2

ENTER 7  
 EXIT 18  
 ENTER 10  
 EXIT 17

ENTER 7  
 EXIT 1  
 ENTER 10  
 EXIT 8



**TWO-YEAR LIMITED WARRANTY**

Mattel, Inc. warrants to the original consumer purchaser that this product will be free of defects in material or workmanship for two years (unless specified in alternate warranties) from the date of purchase. If defective, return the product along with proof of the date of purchase, postage prepaid, to Consumer Relations, 636 Girard Avenue, East Aurora, New York 14052 for replacement or refund at our option. This warranty does not cover damage resulting from unauthorized modification, accident, misuse, or abuse. In no event shall we be responsible for incidental, consequential, or contingent damages (except in those states that do not allow this exclusion or limitation). Valid only in U.S.A. This warranty gives you specific legal rights and you may also have other rights which vary from state to state. Some states do not allow the exclusion of incidental or consequential damages, so the above limitations may not apply to you.

Send only the product to the address above. Send all correspondence to Consumer Relations, Mattel, Inc., 333 Continental Blvd., El Segundo, California 90245-5012, U.S.A. Or you may phone us toll-free at 1-800-524-TOYS, Monday-Friday, 8:00 a.m.-6:00 p.m. Eastern Time. See telephone directory for Mattel listing.

**CONSUMER INFORMATION**

YOU CAN TELL IT'S MATTEL! Call us toll-free or write with any comments or questions about our products or service. Monday-Friday, 8:00 a.m.-6:00 p.m. Eastern Time. Outside U.S.A., see telephone directory for Mattel listing. Consumer Relations, Mattel, Inc., 333 Continental Blvd., El Segundo, CA 90245 U.S.A.

**1 (800) 524-TOYS**

**CE** CONFORMS TO THE SAFETY REQUIREMENTS OF ASTM F963.

**We are dedicated to quality products.**

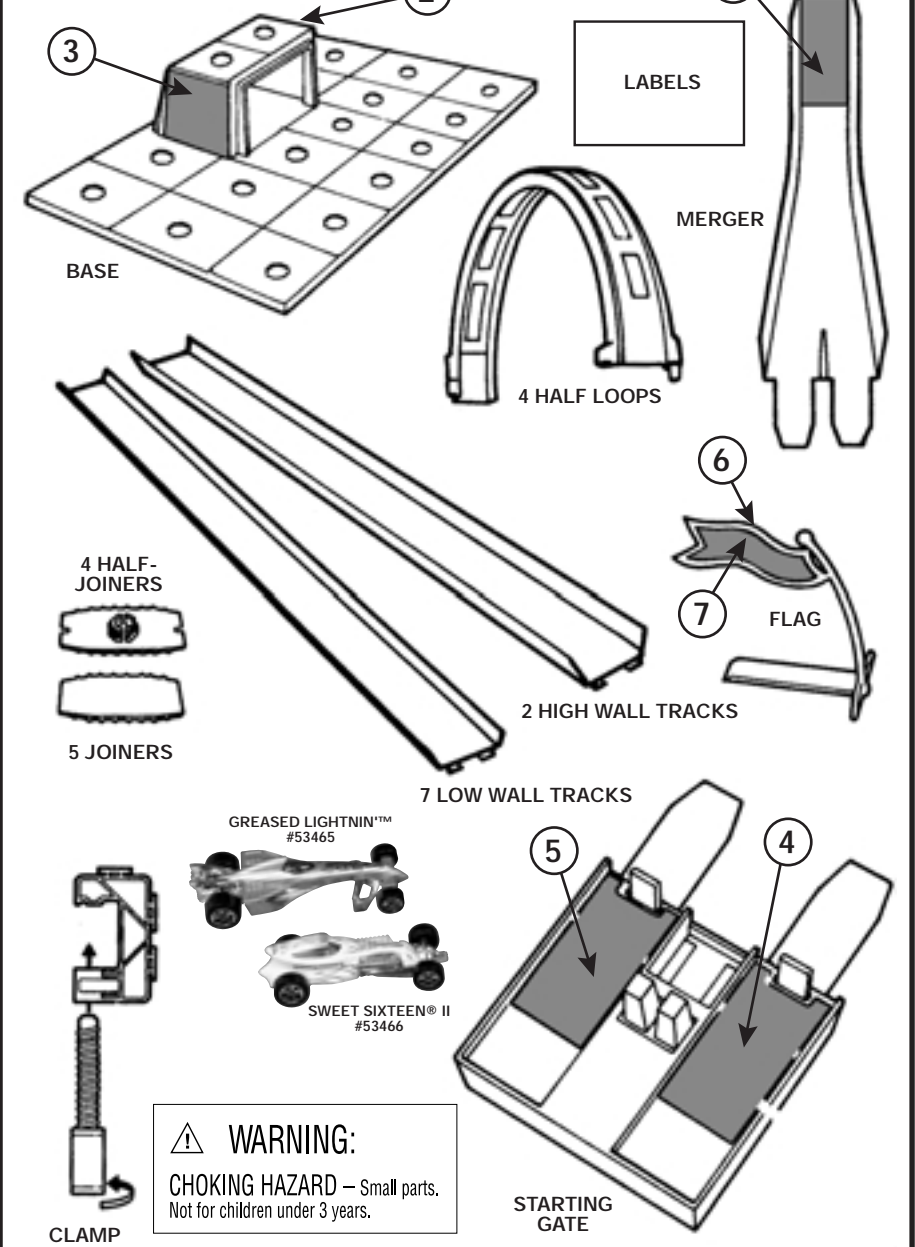
**Hot Wheels DUAL LOOP DUEL™ SET INSTRUCTIONS**

52577-0920



Keep these instructions for future reference as they contain important information.

**CONTENTS / LABELS**



**WARNING:**  
 CHOKING HAZARD - Small parts.  
 Not for children under 3 years.

© 2001 Mattel, Inc., El Segundo, CA 90245 U.S.A. All Rights Reserved.  
 Mattel U.K. Ltd., Vanwall Business Park, Maidenhead SL6 4UB. Helpline 01628500303.  
 Mattel Australia Pty Ltd., Richmond, Victoria. 3121. Consumer Advisory Service 1800 800 812 (valid only in Australia).

ASSEMBLE

