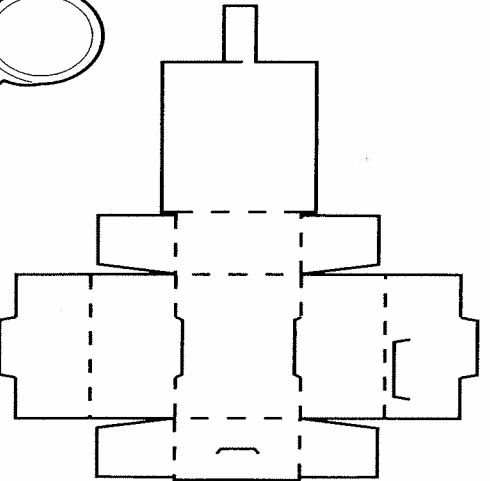
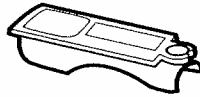
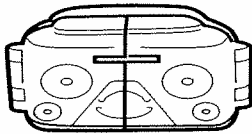
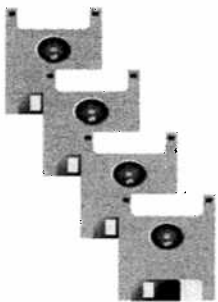
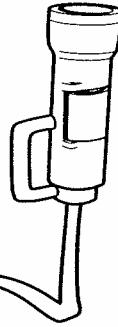
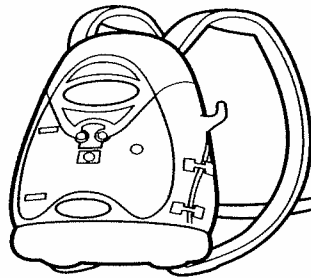
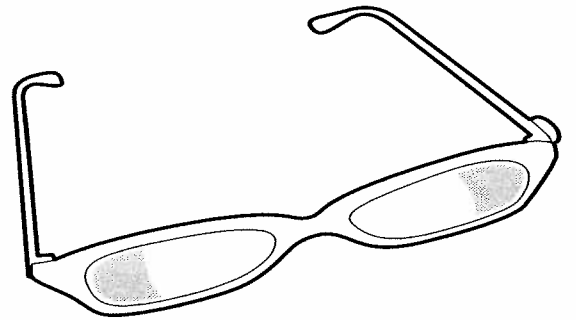
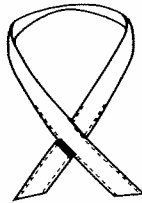
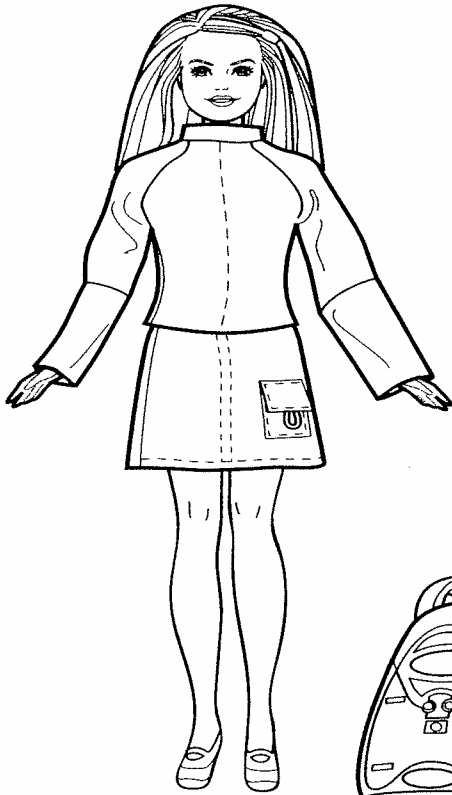


# mystery squad™

## INSTRUCTIONS

### CONTENTS



MORSE CODE		MORSE CODE	
A ····	H ····	O ····	V ····
B ····	I ····	P ····	W ····
C ····	J ····	Q ····	X ····
D ····	K ····	R ····	Y ····
E ····	L ····	S ····	Z ····
F ····	M ····	T ····	
G ····	N ····	U ····	

Includes two AG-13 or LR44 alkaline replaceable button cell batteries. Dispose of batteries safely. Colors and decorations may vary from those shown.

Please remove everything from the package and compare to the contents shown here.

If any items are missing, please call 1-800-524-TOYS.



55536-0920-G1

Keep these instructions for future reference as they contain important information.

**There's a mystery to be solved.  
The Mystery Squad™ leaps into action!  
The crew meets back at the secret Mystery Squad  
Headquarters™. The prom queen's stuff is missing!  
It's another case for the Mystery Squad™ ....**

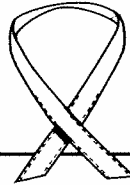
Mystery Squad Headquarters™ sold separately, subject to availability.

**Drew®**

**Communications Specialist**

**You coordinate the search by flashing coded  
transmissions with her signaler.**

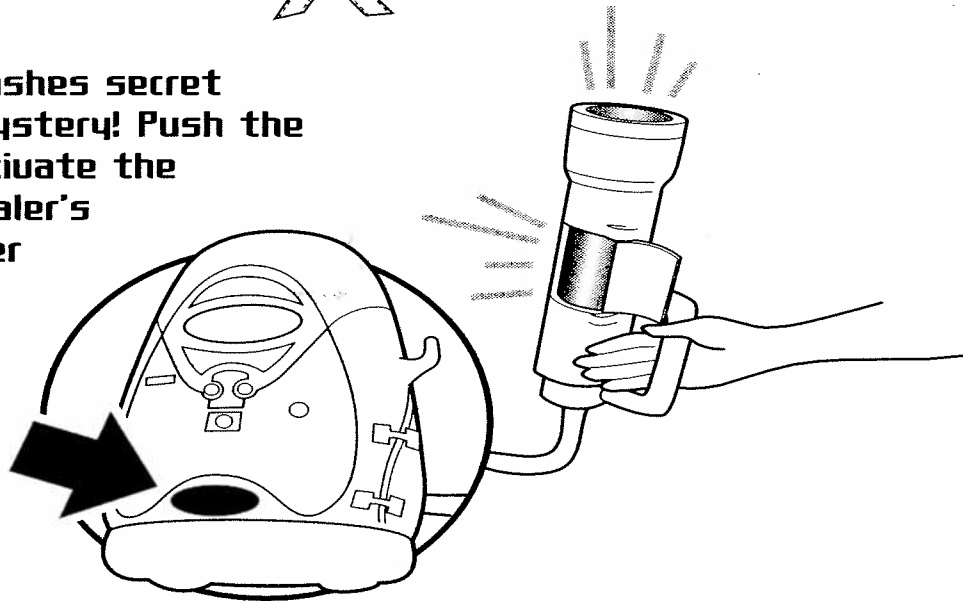
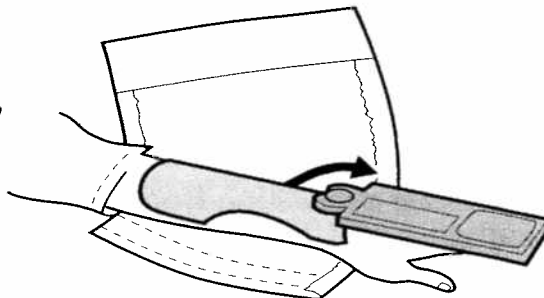
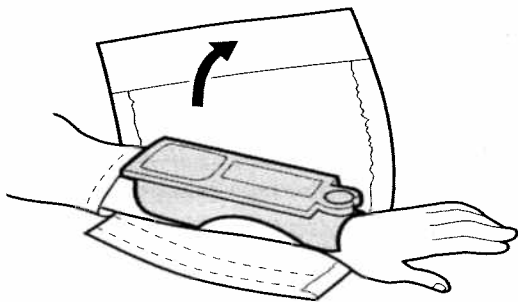
**Prom Pieces**



**Each doll comes with  
accessories from the  
prom caper mystery!**

**The light-up signaler flashes secret  
messages to help solve the mystery! Push the  
button on the backpack to activate the  
signaler's lights. Open the signaler's  
hidden compartment for another  
way to flash secret messages.**

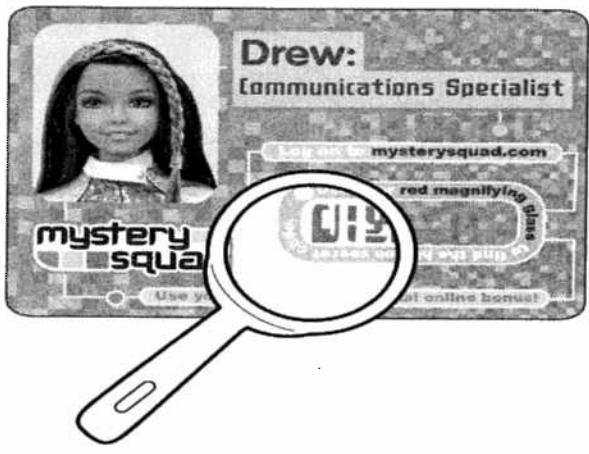
**Hidden wrist  
"computer" "stores"  
top-secret data!**



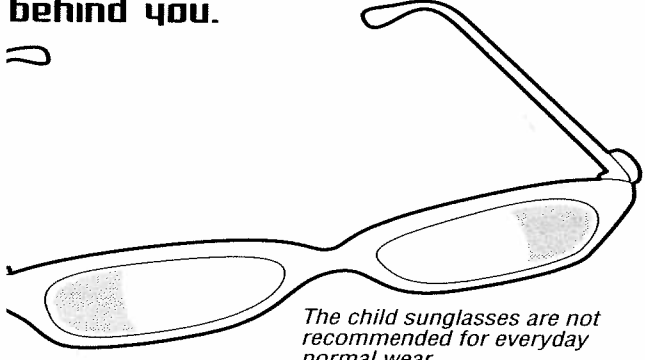
**Morse code  
chart for secret  
messages.**

MORSE CODE		MORSE CODE	
A ···	H ·····	O ····	V ·····
B ·····	I ·····	P ·····	W ·····
C ·····	J ·····	Q ·····	X ·····
D ·····	K ·····	R ·····	Y ·····
E ·····	L ·····	S ·····	Z ·····
F ·····	M ·····	T ·····	
G ·····	N ·····	U ·····	

Use the **magnifying glass** to reveal secret information on your doll's I.D. card.

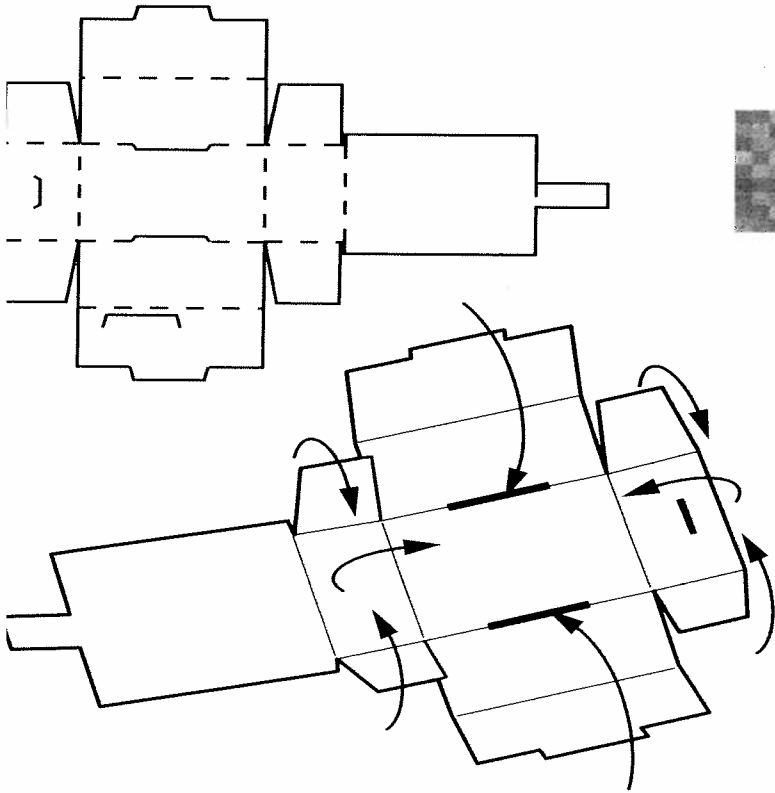


**Special Detective Glasses** for you to wear, with mirrors to see behind you.

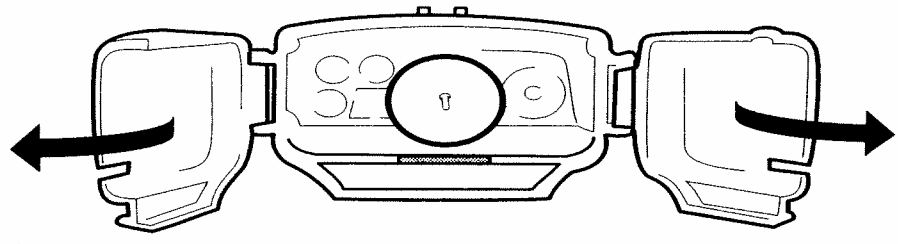


*The child sunglasses are not recommended for everyday normal wear.*

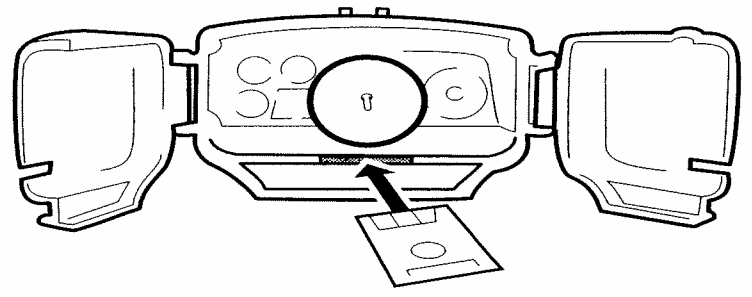
Here's how to fold up the box.



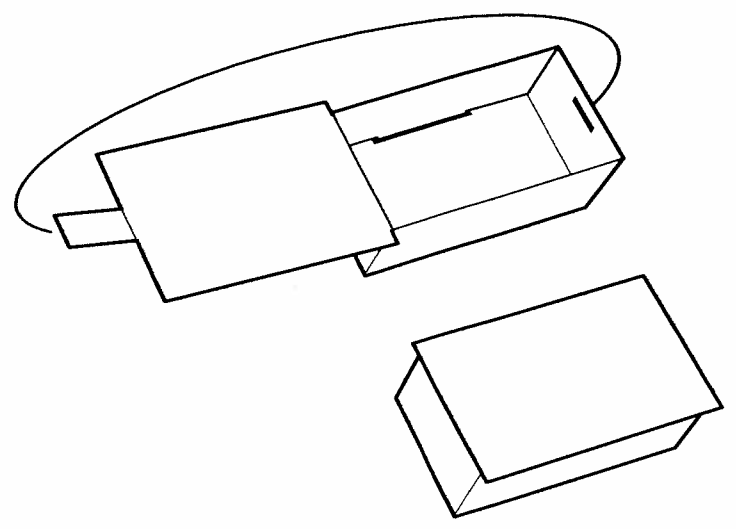
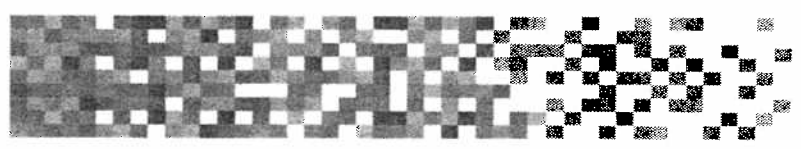
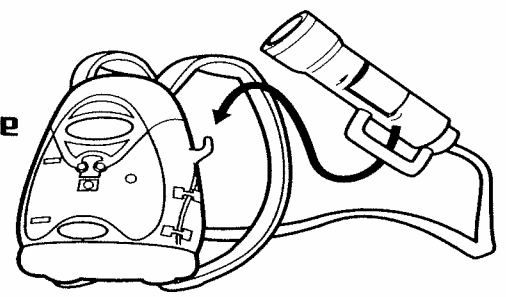
Hidden **satellite dish** gives Drew® a direct link to the team!



Four disks for "downloading" information to be "transmitted" by the satellite dish.



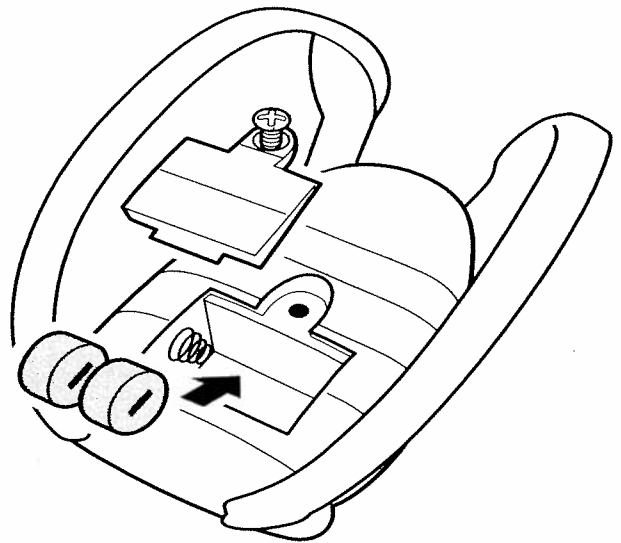
The signaler conveniently hooks on the side of the backpack.



# Battery Replacement

Toy includes 2 replaceable AG13 or LR44 alkaline button cell batteries. Replace batteries when light becomes dim. To replace batteries, use a Phillips head screwdriver (not included) to open battery door. Remove and set aside. Insert 2 AG13 or LR44 alkaline button cell batteries as shown. Use either AG13 or LR44 alkaline batteries or equivalent. Replace battery cover and screw closed.

**ATTENTION:** Non-alkaline batteries may not power this toy. Replace with alkaline batteries for longest life and best performance.



## BATTERY SAFETY INFORMATION:

1. Non-rechargeable batteries are not to be recharged.
2. Rechargeable batteries are to be removed from the toy before being charged.
3. Rechargeable batteries are only to be charged under adult supervision.
4. Do not mix alkaline, standard (carbon-zinc), or rechargeable (nickel-cadmium) batteries.
5. Do not mix old and new batteries
6. Only batteries of the same or equivalent type as recommended are to be used.
7. Batteries are to be inserted with the correct polarity.
8. Exhausted batteries are to be removed from the toy.
9. The supply terminals are not to be short-circuited.
10. Dispose of batteries safely.
11. Do not dispose of in fire as batteries may explode or leak.

## TWO YEAR LIMITED WARRANTY

Mattel, Inc. warrants to the original consumer purchaser that this product will be free of defects in material or workmanship for two years (unless specified in alternate warranties) from the date of purchase. If defective, return the product along with proof of the date of purchase, postage prepaid, to Consumer Relations, 636 Girard Avenue, East Aurora, New York 14052 for replacement or refund at our option. This warranty does not cover damage resulting from unauthorized modification, accident, misuse or abuse. In no event shall we be responsible for incidental, consequential, or contingent damages (except in those states that do not allow this exclusion or limitation). **VALID ONLY IN U.S.A.** This warranty gives you specific legal rights and you may also have other rights which vary from state to state. Some states do not allow the exclusion of incidental or consequential damages, so the above exclusions or limitations may not apply to you.

Send only the product to the address above. Send all correspondence to Consumer Relations, Mattel, Inc., 333 Continental Blvd., El Segundo, California 90245-5012 U.S.A. Or you may phone us toll-free at 1-800-524-TOYS, Monday – Friday, 8:00 a.m. – 6:00 p.m. EST. Outside U.S.A., see telephone directory for Mattel listing.

**CONSUMER INFORMATION**

**MATTY MATTEL™ toys**



**YOU CAN TELL IT'S MATTEL!™** CALL us toll-free or write with any comments or questions about our products or service. Monday-Friday 8:00 a.m.-6:00 p.m. Eastern Time. Outside U.S.A., see telephone directory for Mattel listing.

**Consumer Relations, Mattel, Inc.**  
333 Continental Blvd.  
El Segundo, CA 90245 USA

**1(800) 524-TOYS**

**WE ARE DEDICATED TO QUALITY PRODUCTS.**