

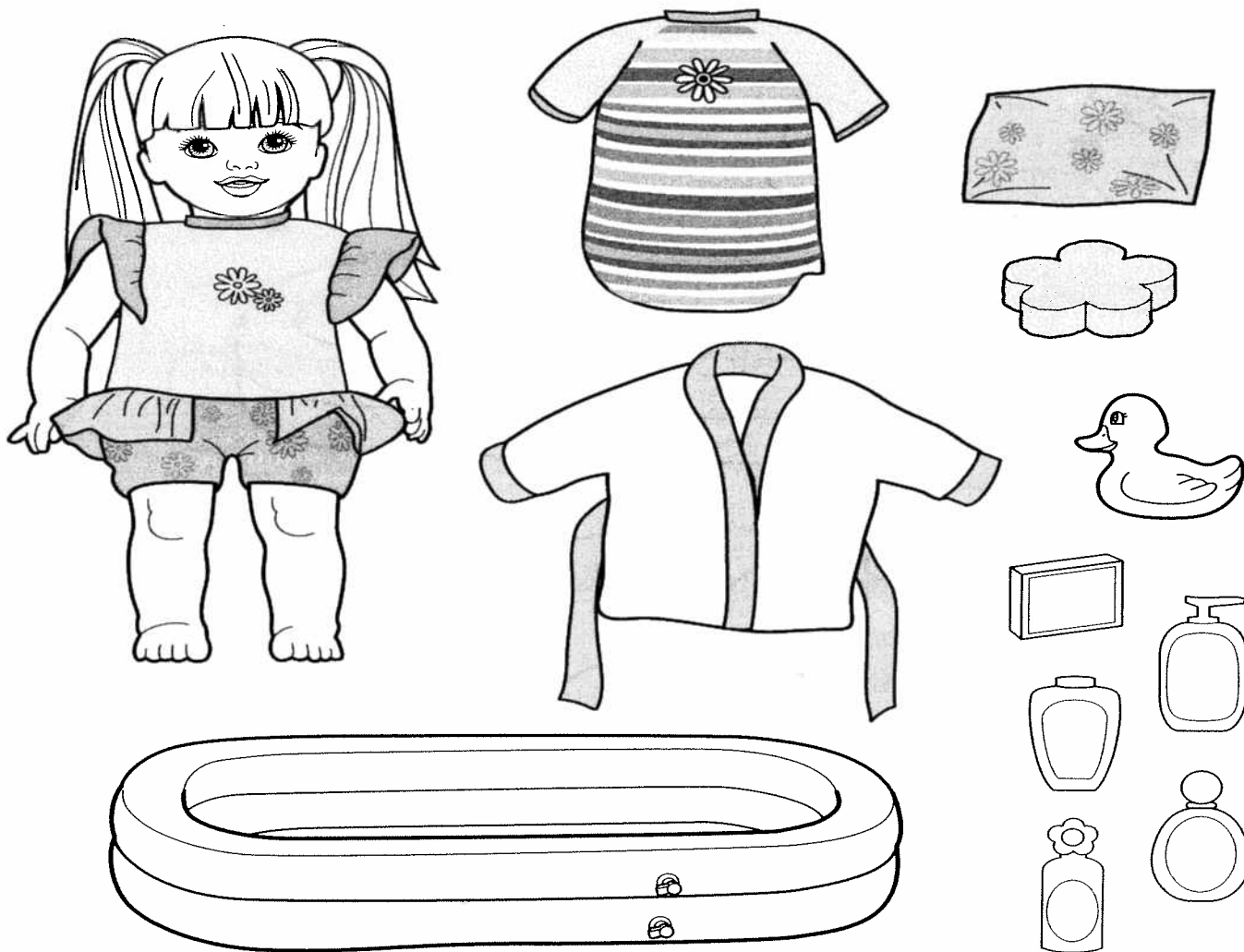
# Cuddly Soft<sup>®</sup>

# Kelly<sup>®</sup>

Doll

## INSTRUCTIONS

### CONTENTS



**ADULT NOTE:** Cut the plastic attachments with scissors and discard the pieces.

Colors and decorations may vary from those shown.

Please remove everything from the package and compare to the contents shown here.

If any items are missing, please call 1-800-524-TOYS.



56012-0920

*Keep these instructions for future reference as they contain important information.*

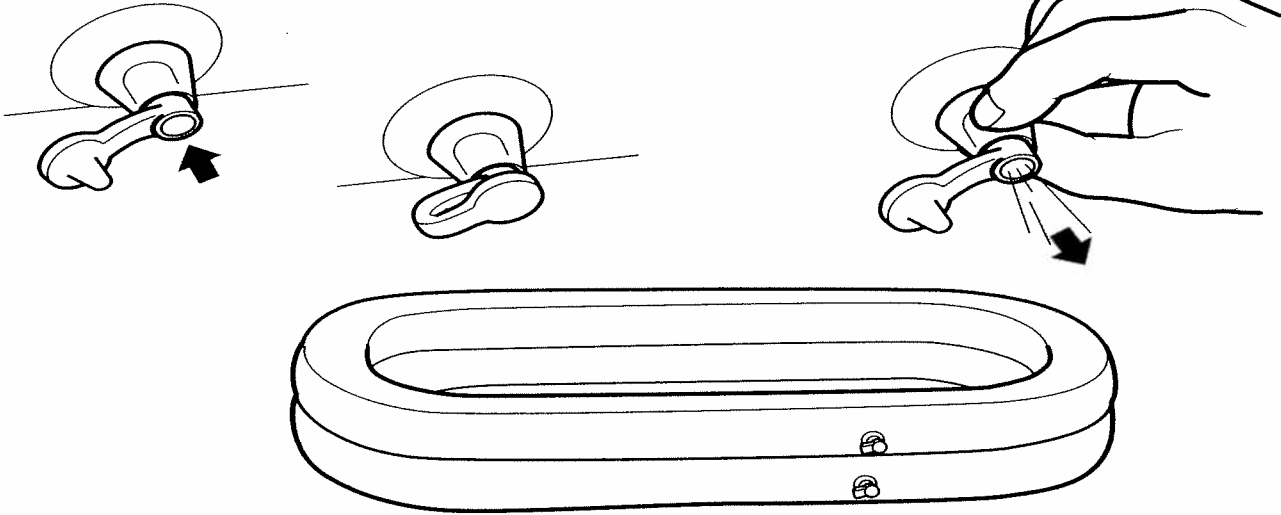
©2001 Mattel, Inc. El Segundo, CA 90245 U.S.A. All Rights Reserved.

# Give me a bath in my inflatable tub...

## Inflating the tub

Slightly pinch the nozzle with your fingers, and blow into the nozzle. Close the cap tightly.

To deflate, pinch the nozzle with your fingers and push the air out.



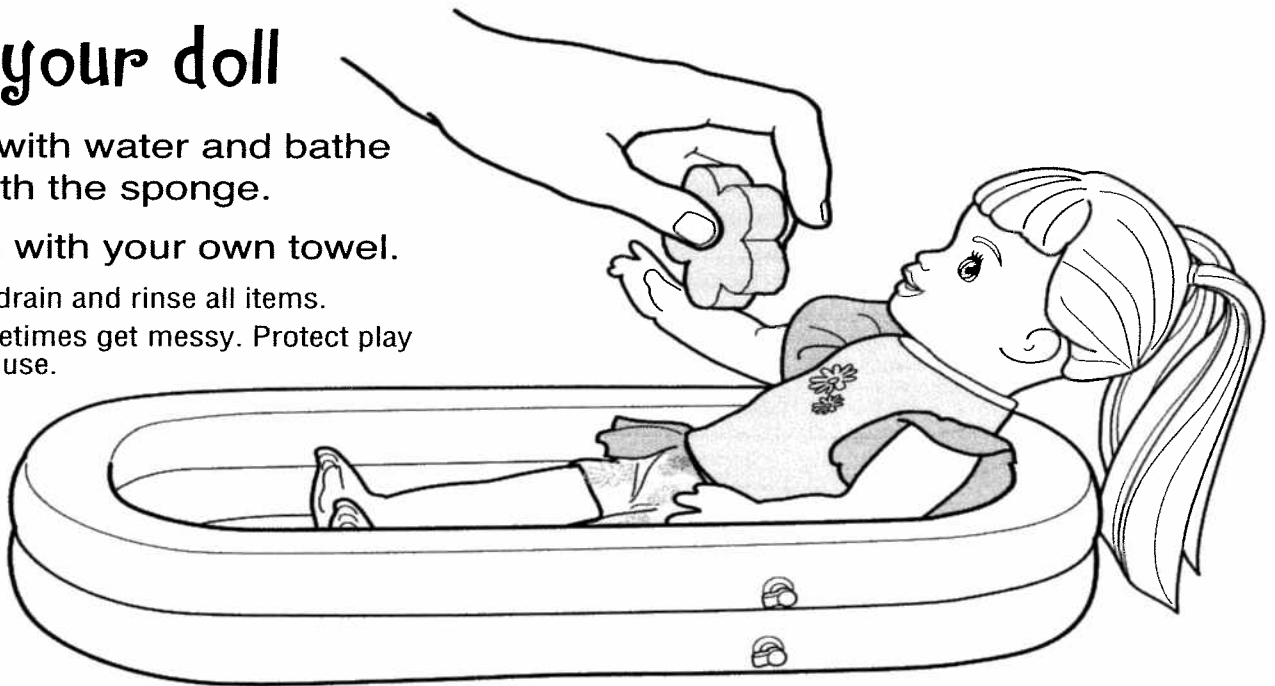
## Bathe your doll

Fill the tub with water and bathe your doll with the sponge.

Dry the doll with your own towel.

After each use, drain and rinse all items.

Water toys sometimes get messy. Protect play surfaces before use.



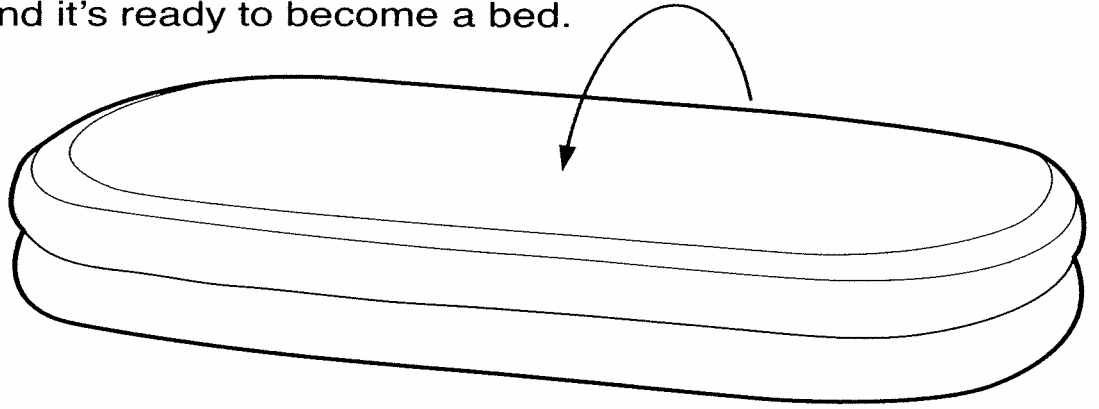
### **TO CLEAN YOUR DOLL:**

Promptly remove doll from water after each use and allow to air-dry. To clean, wipe with a damp cloth or hand wash in mild soap and water.

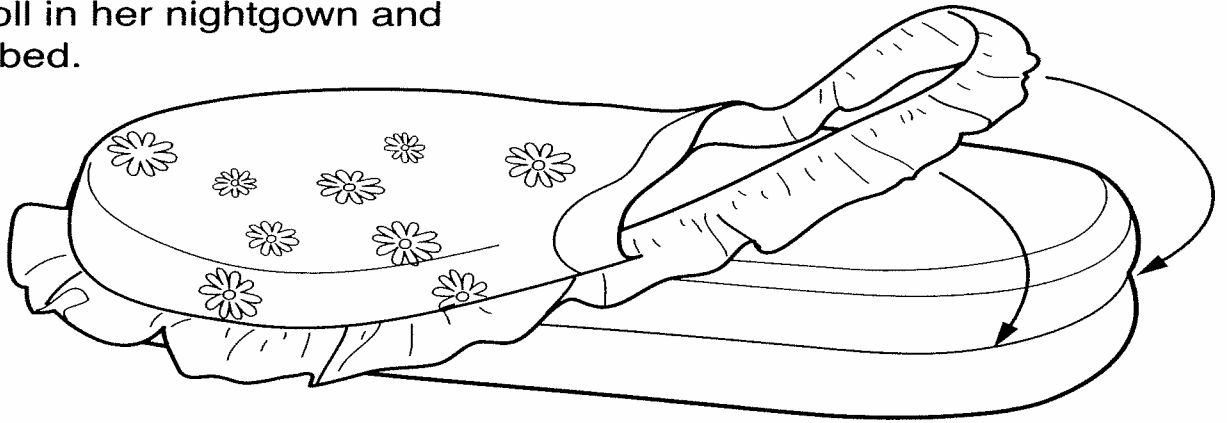
Thoroughly rinse and allow to air-dry.  
**DO NOT PLACE DOLL IN DRYER.  
ALLOW DOLL TO AIR-DRY.**

# ...and then put me to bed!

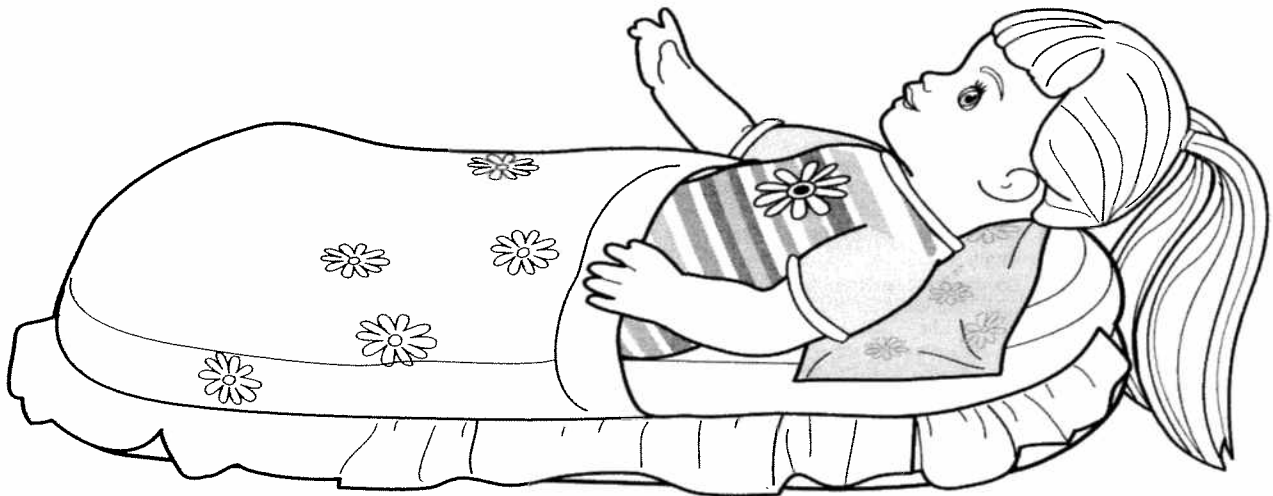
Flip over the tub and it's ready to become a bed.



Slip on the bedding and add the pillow, dress your doll in her nightgown and tuck her into bed.



Tuck your doll in snug and sing her a lullaby for a good night's sleep!



After each use, drain and rinse all items.

Water toys sometimes get messy. Protect play surfaces before use.

Doll body: REG. NO. PA-9679 (HK). ALL NEW MATERIALS consisting of 100% polyester fiber. Surface washable only.

### **TO CLEAN YOUR DOLL:**

Promptly remove doll from water after each use and allow to air-dry.

To clean, wipe with a damp cloth or hand wash in mild soap and water. Thoroughly rinse and allow to air-dry.

**DO NOT PLACE DOLL IN DRYER. ALLOW DOLL TO AIR-DRY.**

---

## **TWO YEAR LIMITED WARRANTY**

Mattel, Inc. warrants to the original consumer purchaser that this product will be free of defects in material or workmanship for two years (unless specified in alternate warranties) from the date of purchase. If defective, return the product along with proof of the date of purchase, postage prepaid, to Consumer Relations, 636 Girard Avenue, East Aurora, New York 14052 for replacement or refund at our option. This warranty does not cover damage resulting from unauthorized modification, accident, misuse or abuse. In no event shall we be responsible for incidental, consequential, or contingent damages (except in those states that do not allow this exclusion or limitation). **VALID ONLY IN U.S.A.** This warranty gives you specific legal rights and you may also have other rights which vary from state to state. Some states do not allow the exclusion of incidental or consequential damages, so the above exclusions or limitations may not apply to you.

Send only the product to the address above. Send all correspondence to Consumer Relations, Mattel, Inc., 333 Continental Blvd., El Segundo, California 90245-5012 U.S.A. Or you may phone us toll-free at 1-800-524-TOYS, Monday – Friday, 8:00 a.m. – 6:00 p.m. EST. Outside U.S.A., see telephone directory for Mattel listing.

**CONSUMER INFORMATION**

MATTY MATTEL™ toys




**YOU CAN TELL IT'S MATTEL!™** CALL us toll-free or write with any comments or questions about our products or service. Monday-Friday 8:00 a.m.-6:00 p.m. Eastern Time. Outside U.S.A., see telephone directory for Mattel listing.

**Consumer Relations, Mattel, Inc.**  
333 Continental Blvd.  
El Segundo, CA 90245 USA

**1(800) 524-TOYS**

**WE ARE DEDICATED TO QUALITY PRODUCTS.**

 **WARNING:**  
**CHOKING HAZARD** – Small parts.  
Not for children under 3 years.