

Little People



Fisher-Price®

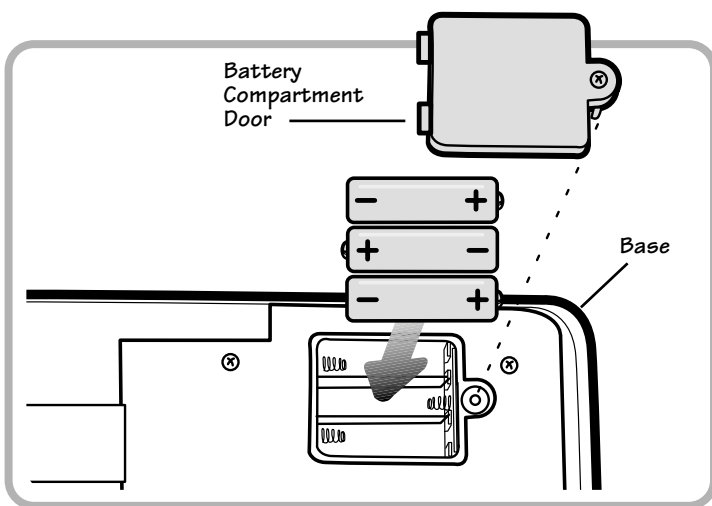
# Animal Sounds Farm™

Product Number 77973

- Please keep this instruction sheet for future reference, as it contains important information.
- Adult assembly is required.
- Requires three size “AA” (LR6) alkaline batteries for operation (not included).
- Tool required for battery installation: Phillips screwdriver (not included).

www.fisher-price.com

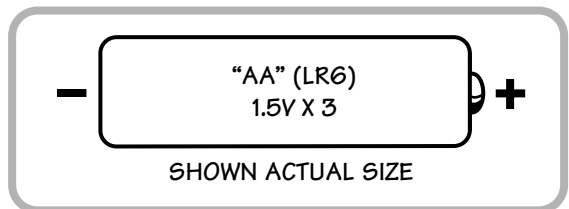
## Battery Installation



- Locate the battery compartment on the underside of the base.
- Loosen the screw in the battery compartment door with a Phillips screwdriver and remove the door.
- Insert three “AA” (LR6) alkaline batteries as shown in the battery compartment.

**Hint:** We recommend using alkaline batteries for longer battery life.

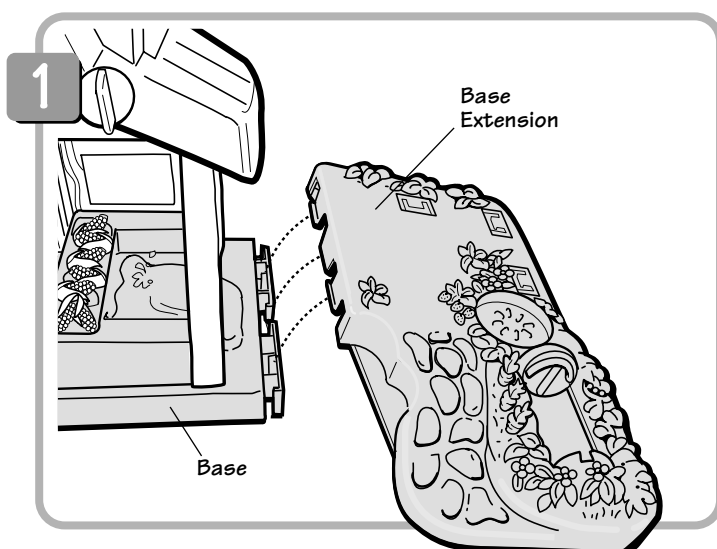
- Replace the battery compartment door and tighten the screw with a Phillips screwdriver. Do not over-tighten.



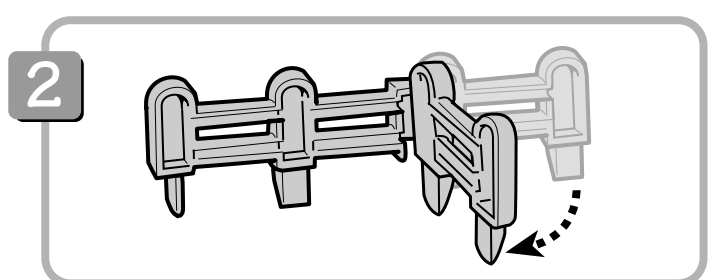
## Battery Tips

- Do not mix old and new batteries.
- Do not mix different types of batteries: alkaline, standard (carbon-zinc) or rechargeable (nickel-cadmium).
- Remove the batteries during long periods of non-use. Always remove exhausted batteries from the toy. Battery leakage and corrosion can damage this toy. Dispose of batteries safely.
- Do not dispose of batteries in a fire. The batteries may explode or leak.
- Never short circuit the battery terminals.
- Non-rechargeable batteries are not to be recharged.
- Only batteries of the same or equivalent type as recommended in the Battery Installation instructions are to be used.
- If removable rechargeable batteries are used, they are only to be charged under adult supervision.
- Rechargeable batteries are to be removed from the toy before they are charged.
- If you use a battery charger, it should be examined regularly for damage to the cord, plug, enclosure and other parts. Do not use a damaged battery charger until it has been properly repaired.

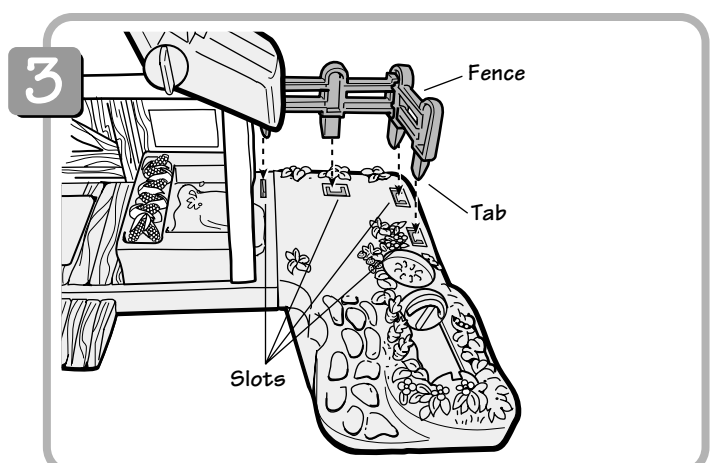
## One-Time Assembly



- Align the three tabs on the end of the base extension with the slots on the end of the base.
- Press firmly above each tab to snap the base extension to the base.

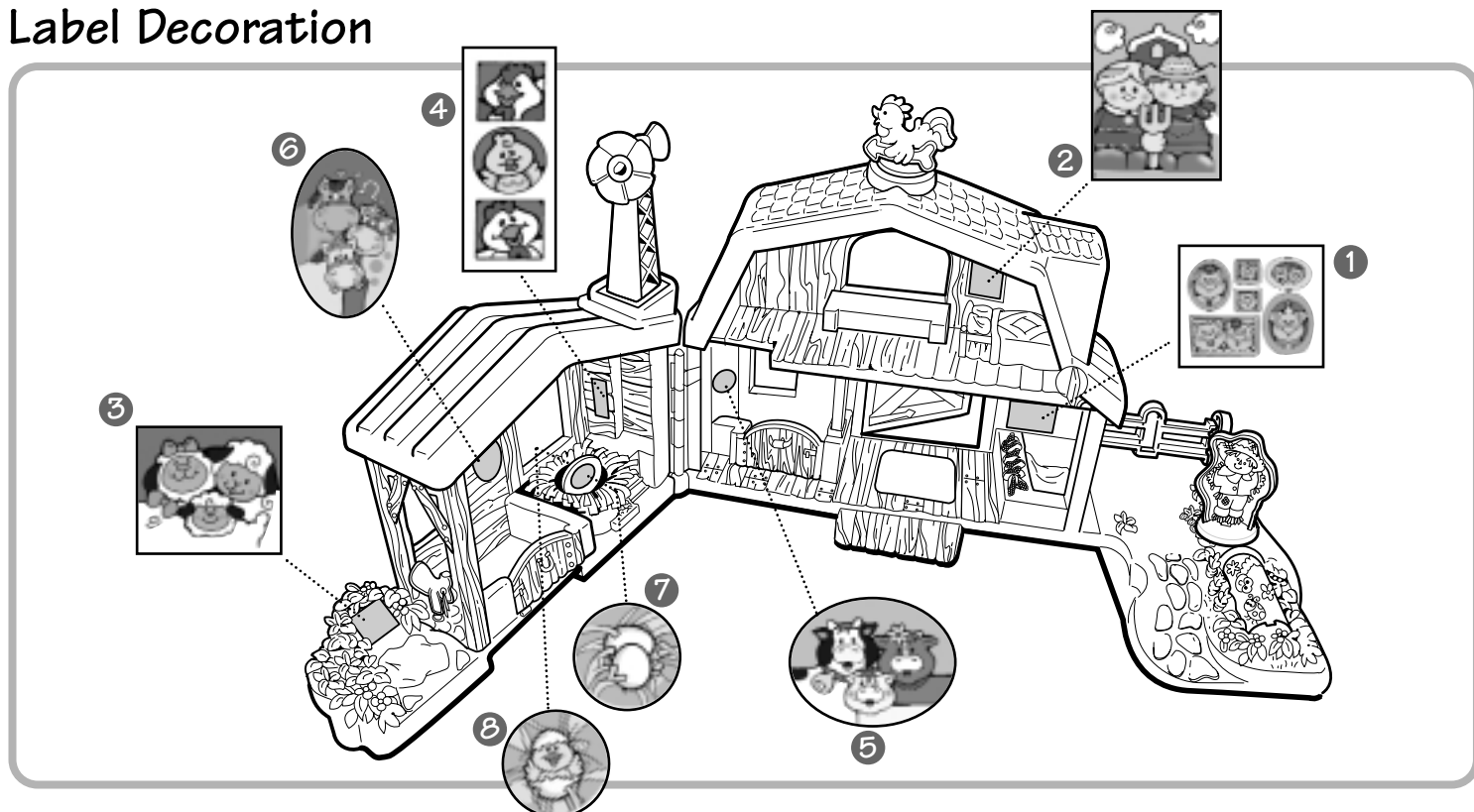


- Bend the fence so that it forms an “L” shape.



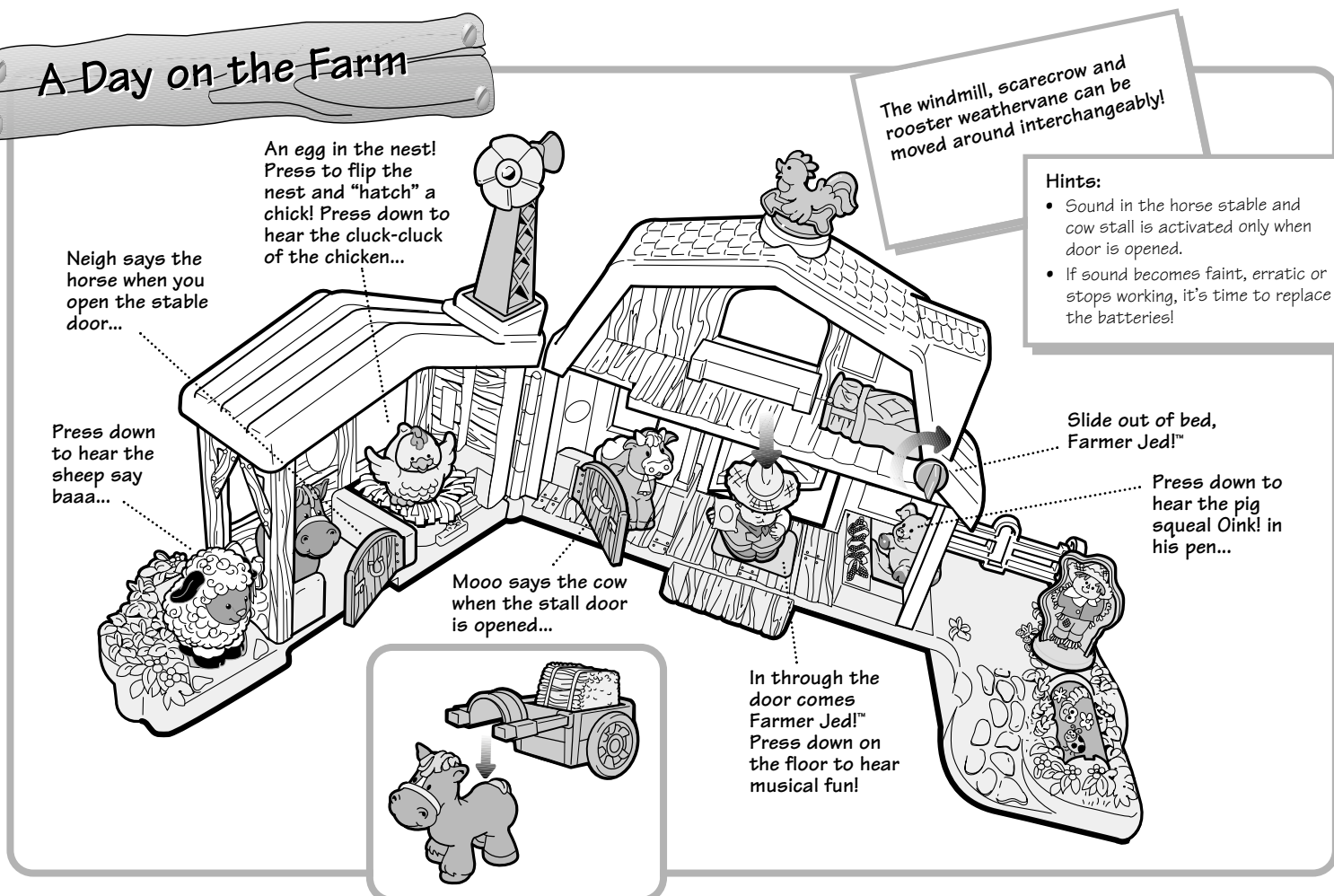
- Fit the four fence tabs into the slots in the base.

## Label Decoration



- Apply labels as shown.
- For best results, wash your hands before applying the labels and make sure the areas to which the labels will be applied are clean and dry. Avoid repositioning a label once it has been applied.

## A Day on the Farm



## Storage and Care

- At the end of a busy day on the farm, fold it together with everything stored neatly inside.
- To clean, wipe all parts of this toy with a clean cloth dampened with a mild soap and water solution. Never immerse any part of this toy.
- This toy has no consumer serviceable parts. Do not take this toy apart.

## Consumer Information

### Questions? We'd like to hear from you!

Call Fisher-Price® Consumer Relations, toll-free at **1-800-432-KIDS**, 8 AM - 6 PM EST Monday through Friday. Hearing-impaired consumers using TTY/TDD equipment, please call 1-800-382-7470. Or, write to: Fisher-Price® Consumer Relations, 636 Girard Avenue, East Aurora, New York 14052.

For other countries, outside the United States:  
**Canada:** call 1-800-567-7724, or write to: Mattel Canada Inc, 6155 Freemont Blvd., Mississauga, Ontario L5R 3W2. **Great Britain:** telephone 01628 500303.  
**Australia:** Mattel Australia Pty. Ltd., 658 Church Street, Locked Bag #870, Richmond, Victoria 3121 Australia. Consumer Advisory Service 1300 135 312.  
**New Zealand:** 16-18 William Pickering Drive, Albany 1331, Auckland.

## FCC Statement (United States Only)

**Note:** This equipment has been tested and found to comply with the limits for a Class B digital device, pursuant to Part 15 of the FCC Rules. These limits are designed to provide reasonable protection against harmful interference in a residential installation. This equipment generates, uses and can radiate radio frequency energy and, if not installed and used in accordance with the instructions, may cause harmful interference to radio communications. However, there is no guarantee that interference will not occur in a particular installation. If this equipment does cause harmful interference to radio or television reception, which can be determined by turning the equipment off and on, the user is encouraged to try to correct the interference by one or more of the following measures:

- Reorient or relocate the receiving antenna.
  - Increase the separation between the equipment and receiver.
  - Consult the dealer or an experienced radio/TV technician for help.
- CAUTION: Changes or modifications not expressly approved by the manufacturer responsible for compliance could void the user's authority to operate the equipment.