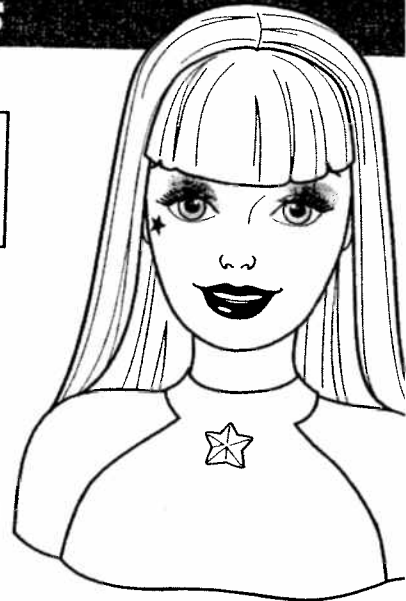


Barbie

Get Glam Barbie Talking Styling Head

Instructions

Contents:



To release hair from package:

Pull ends of strips to release hair. Remove any remaining thread from doll's hair, then comb hair.



Please remove everything from the package and compare to the contents shown here. If any items are missing, please call 1-800-524-TOYS.

Keep these instructions for future reference as they contain important information.

ADULTS NOTE: Cut the plastic attachments with scissors (not included) and discard pieces. Requires 3 AA alkaline batteries (not included).

3+



88816-0920

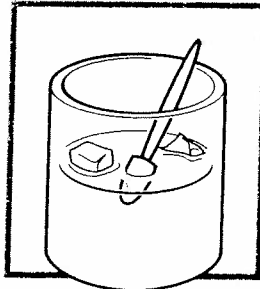
BEFORE PLAYING WITH "MAKE-UP" FOR THE FIRST TIME

Water toys sometimes get messy. Protect play surfaces before use. Do not use on surfaces that can be damaged by water. Dry all items thoroughly before storing.

Apply warm (not hot) water with cloth (not included) to clean up the water-soluble paint on the lips, eyes and star.

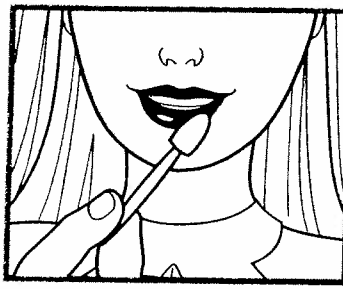


TO APPLY "MAKE-UP"



Fill a cup with ice and water then wet the applicator.

Cup is not included.

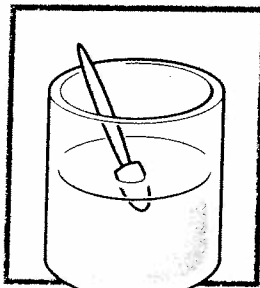


Apply **icy cold** water to doll's face to reveal "lipstick", "eye shadow" and "star".

HELPFUL TIP: The colder the applicator the better the makeup appears.

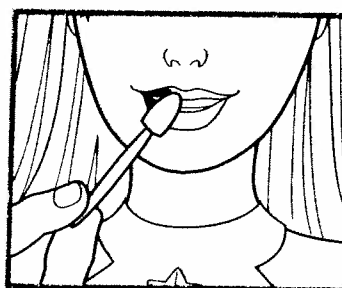


TO REMOVE "MAKE-UP"



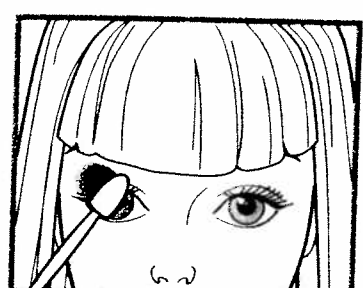
Fill a cup with warm (not hot) water then wet the applicator.

Cup is not included.



Apply **warm** (not hot) water to doll's face to remove "lipstick", "eye shadow" and "star".

HELPFUL TIP: Keep applying warm water until the make-up disappears. Change the warm water in the container regularly. To avoid burns do not use water that is too hot (above 120° F).

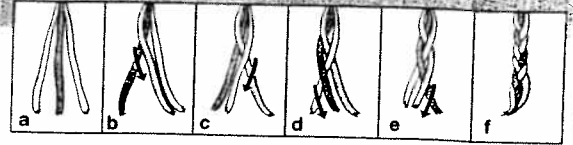


TO PLAY THE SOUND

Press the star charm to activate Barbie® doll's voice.

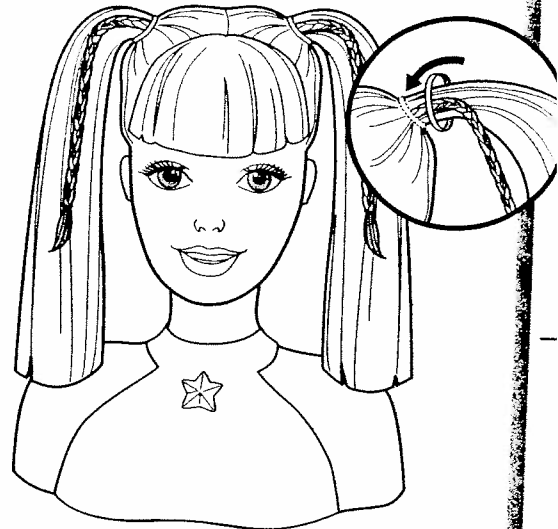


HAIR STYLES AND ACCESSORIES



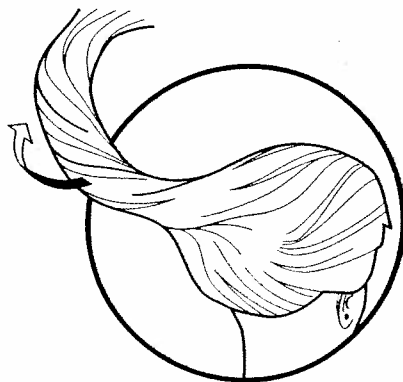
Trendy

Tie locks of hair into ponytails.



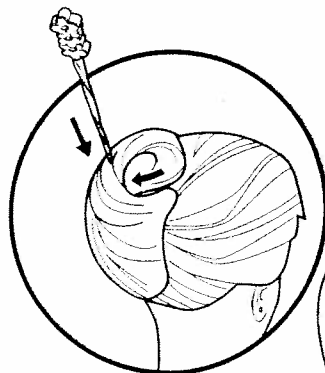
Sporty

Comb hair into ponytails. Braid hair (see steps a to f) then fasten with rubber bands.

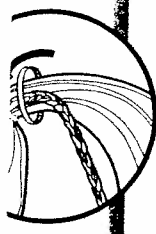


Glamorous

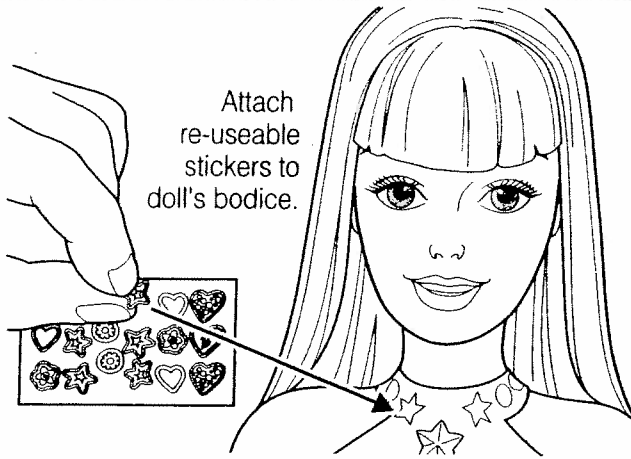
Twirl doll's hair into a "French twist" and hold together with the hair stick.



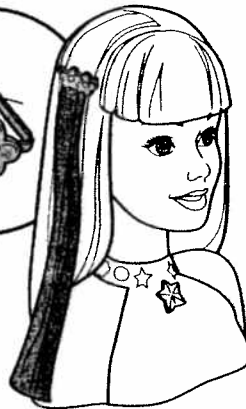
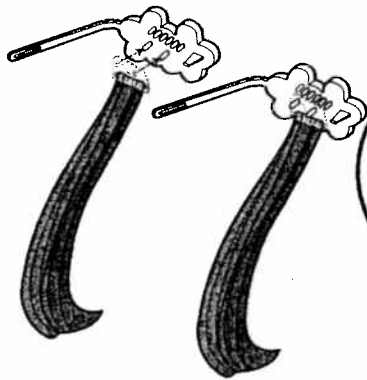
Ap
m:
Ap
m:
IM
wil
ex
int
for



Attach re-useable stickers to doll's bodice.



ee
nds.



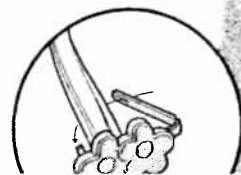
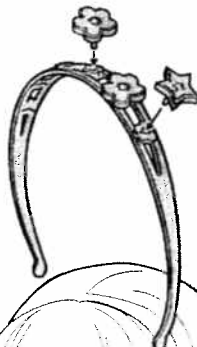
ATTACH HAIR FALLS TO BARRETTES
THEN CLIP TO DOLL'S HAIR



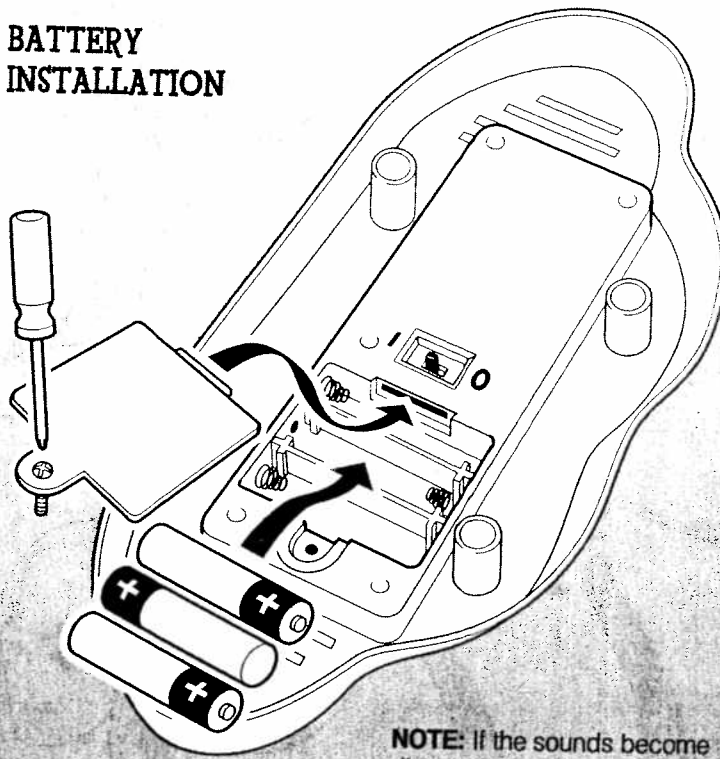
Apply **icy cold** water to make hair falls turn purple.
Apply **warm** water to make hair falls turn pink.

IMPORTANT! Color changes will last longer if you DO NOT expose doll or hair falls to intense heat or direct sunlight for prolonged periods of time.

Add decorations to headband and clip onto doll's head.



BATTERY INSTALLATION



To Insert Batteries:

Unscrew battery door screw with Phillips screwdriver (not included), and remove door.

Insert three (3) AA alkaline batteries as shown. Replace door.

NOTE: If the sounds become distorted, reset the toy by turning the toy off for 5 seconds and then back on. If it still sounds distorted when turned on, replace the batteries.

If the toy is not played with for a while, it will go into a sleep mode. Reset it by turning the ON/OFF switch to OFF then back to ON.

Move ON/OFF switch to OFF position when toy is not in use.

Battery Safety Information:

1. Non-rechargeable batteries are not to be recharged.
2. Rechargeable batteries are to be removed from the product before they are charged.
3. If removable rechargeable batteries are used, they are only to be charged under adult supervision.
4. Do not mix alkaline, standard (carbon-zinc), or rechargeable (nickel-cadmium) batteries.
5. Do not mix old batteries and new batteries.
6. Only batteries of the same or equivalent type as recommended are to be used.
7. Be sure to insert batteries with the correct polarities and always follow the toy and battery manufacturers' instructions.
8. Exhausted batteries are to be removed from the product.
9. The supply terminals are not to be short-circuited.
10. Dispose of batteries safely.
11. Do not dispose of in fire as batteries may explode or leak.

CONS

MATTEL TOYS



WE ARE D

CHOKING
Not for child

Retain this
Mattel, U.K., Ltd., Vanu
Mattel Australia
Consumer Advisory Ser
Mattel East Asia Limited, Rm. 1106, Sout
HK, China. Mattel Can
©2002 Mattel, Inc. All