



# RACE

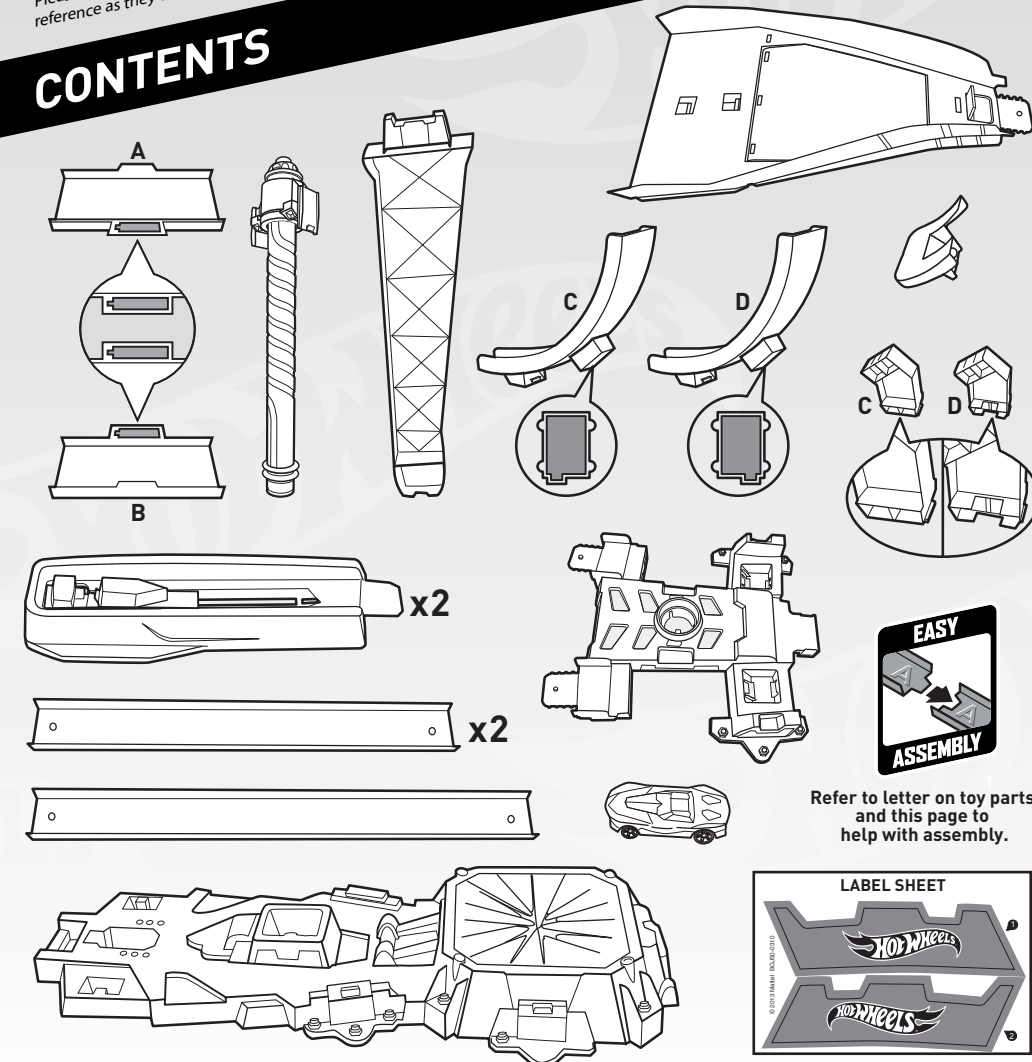
## DOUBLE JUMP DUEL™



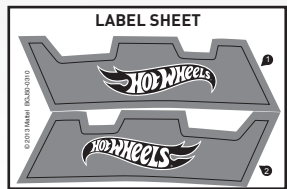
### INSTRUCTIONS

Please keep these instructions for future reference as they contain important information.

### CONTENTS

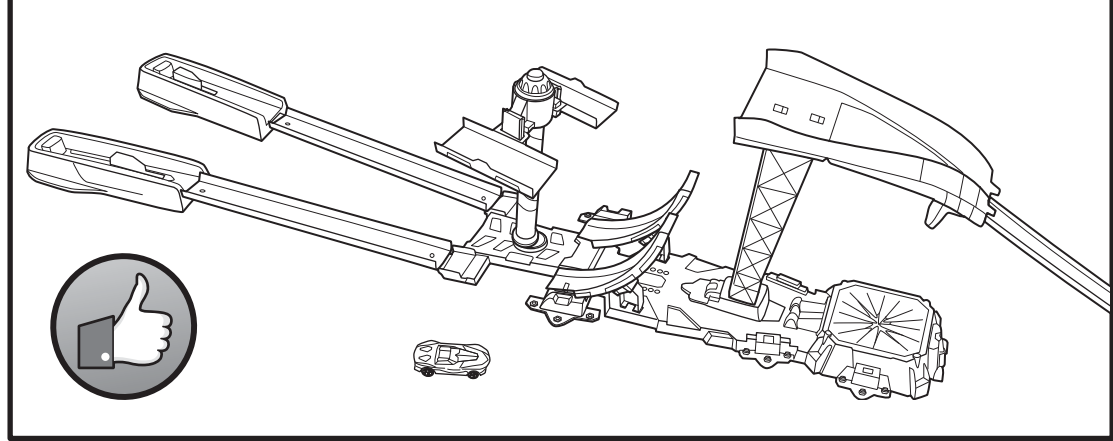
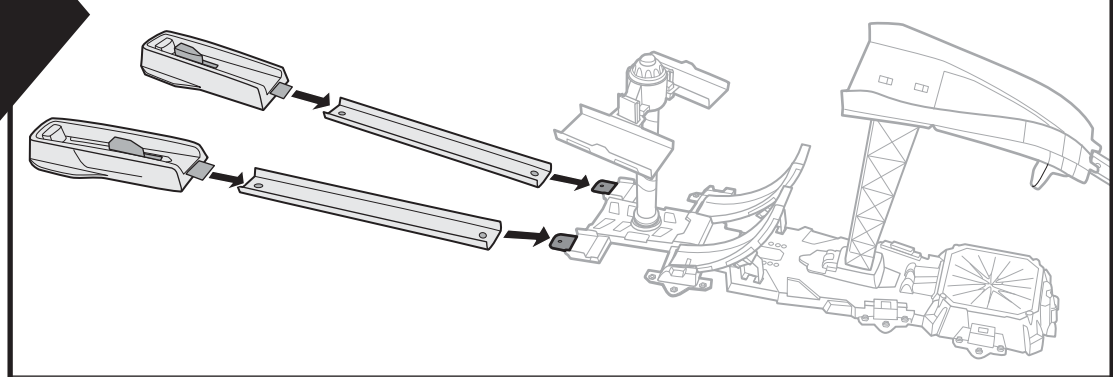
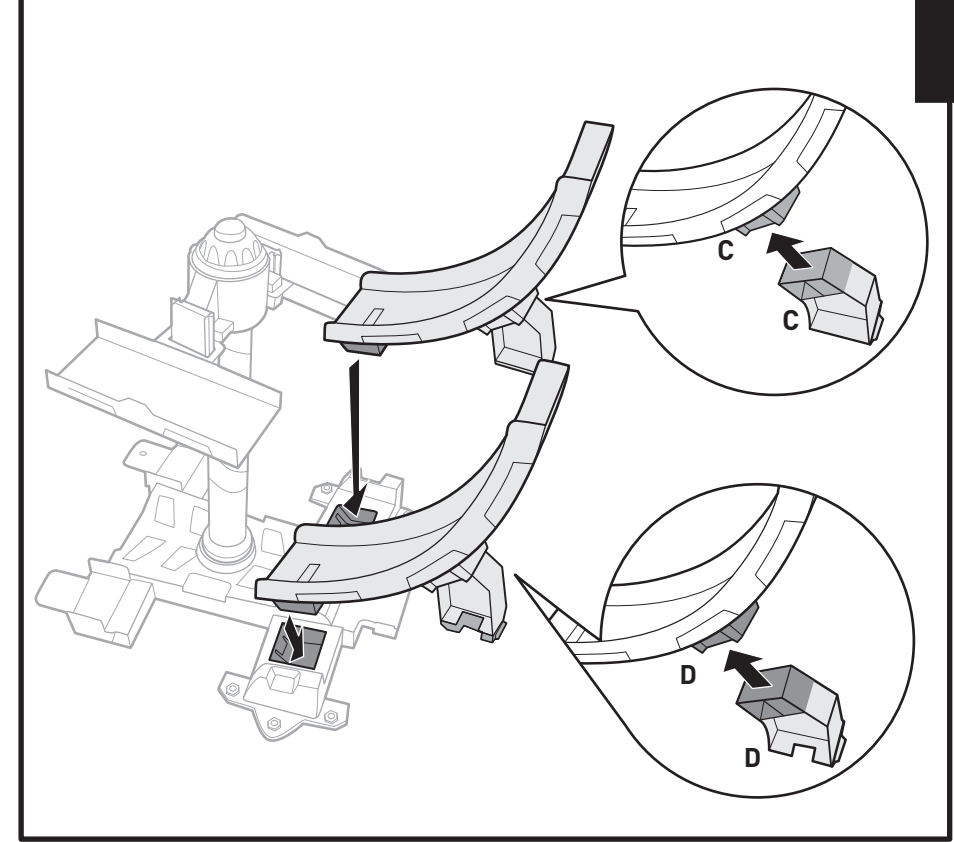
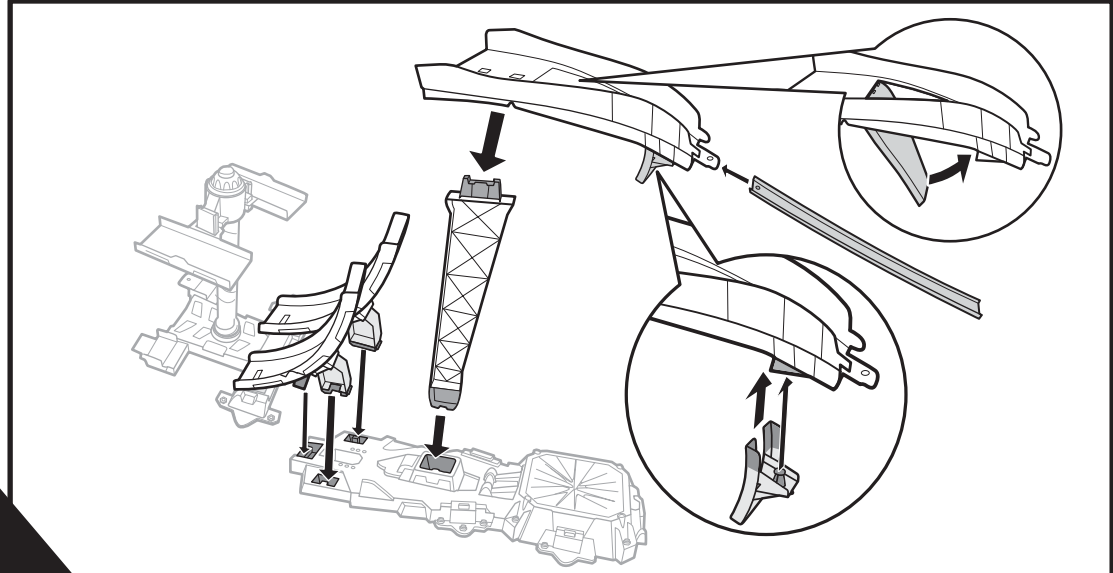
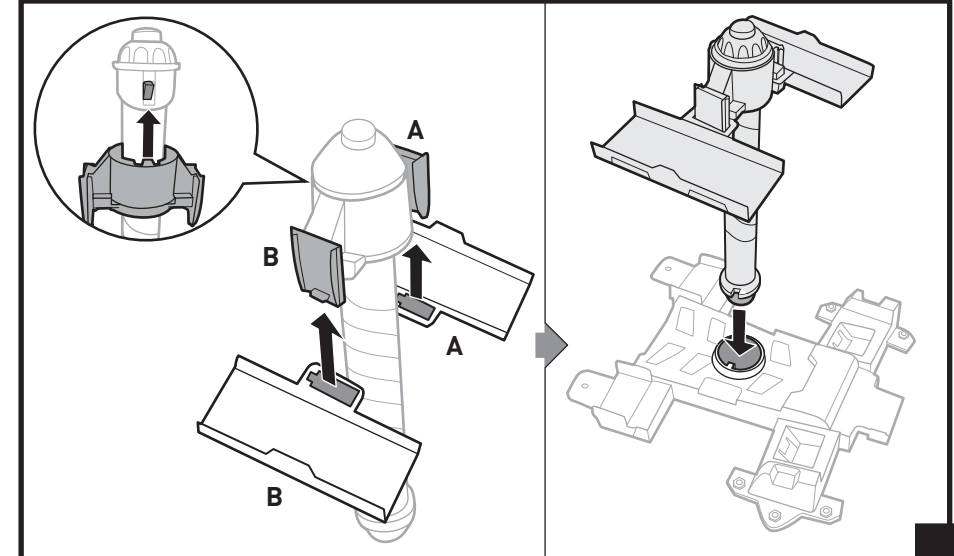


Refer to letter on toy parts and this page to help with assembly.

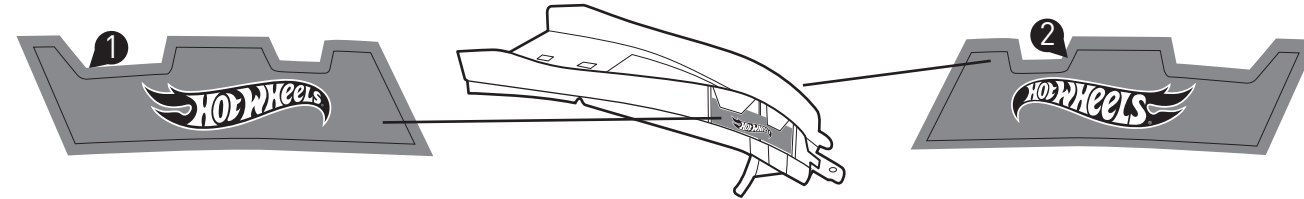
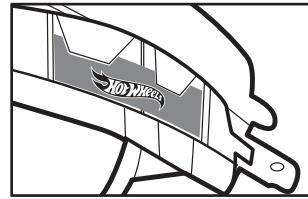


# 1 ASSEMBLY

Refer to letter on toy parts and contents page to help with assembly.

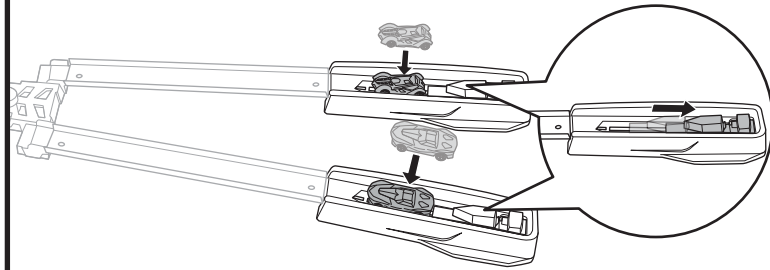


## 2 APPLY LABELS



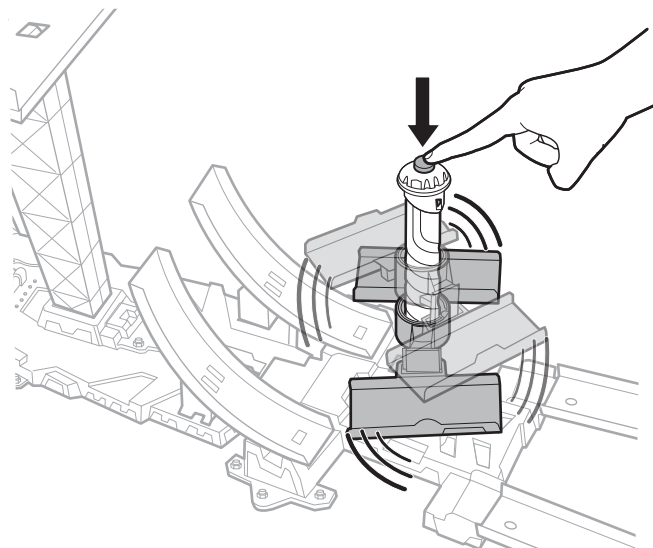
## 3 TO PLAY

- 1.** The set works with one car, but it's more fun to challenge a friend. So load 2 cars (additional vehicle not included) and get ready to race!

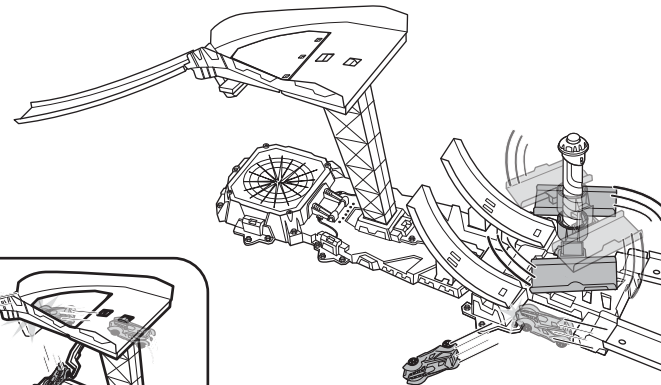


Try different launch settings to find the best performance.

- 2.** Press button to release the fair-start ramp.

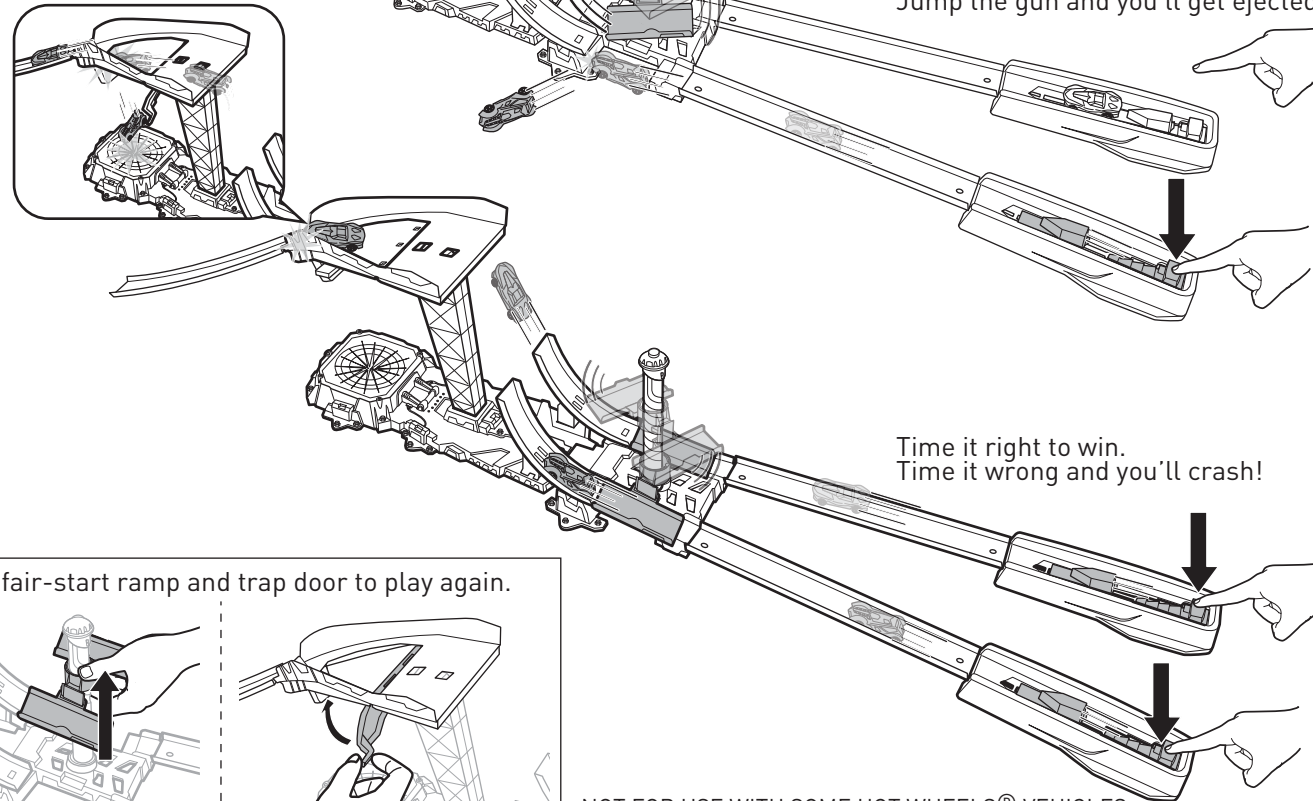


**3.a**



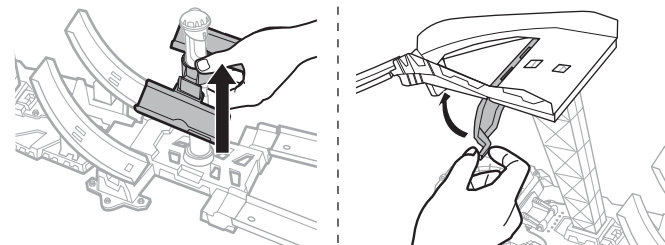
Wait for the ramp to drop.  
Jump the gun and you'll get ejected!

**3.b**



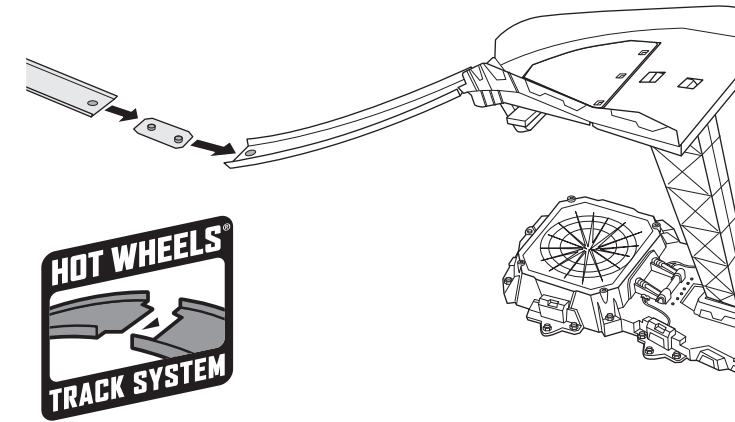
Time it right to win.  
Time it wrong and you'll crash!

Reset fair-start ramp and trap door to play again.



NOT FOR USE WITH SOME HOT WHEELS® VEHICLES.  
INCLUDES ONE VEHICLE, ADDITIONAL VEHICLES SOLD SEPARATELY.

## 4 MORE WAYS TO PLAY



CONNECT TO HOT WHEELS® SETS (SOLD SEPARATELY).

## TROUBLESHOOTING

- Q.** Why does the fair-start ramp land on the track facing the wrong way?
- A.** To stop the ramp landing the wrong way, always attach the ramp to the top of the pole and press the button to release it.
- Q.** My cars keep crashing on the tracks for no reason. What is the problem?
- A.** Clear all obstructions on the tracks. Adjust track side walls at connection points.
- Q.** My car keeps slowing down by itself on the tracks.
- A.** Lint may collect around your car's axles. This may cause the car to run slowly. Use tweezers or a toothpick to remove lint.

