



# Off-Road Cruiser™



Figures sold separately and subject to availability.

**Model Number: C7463**

Please keep this instruction sheet for future reference, as it contains important information.

Requires three "AA" (LR6) **alkaline** batteries (not included).

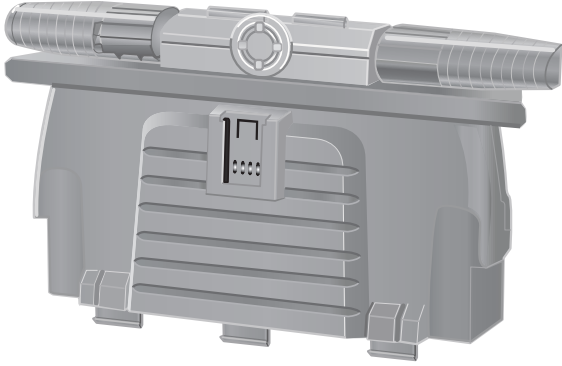
Adult assembly is required.

Tool required for battery installation: Phillips screwdriver (not included).

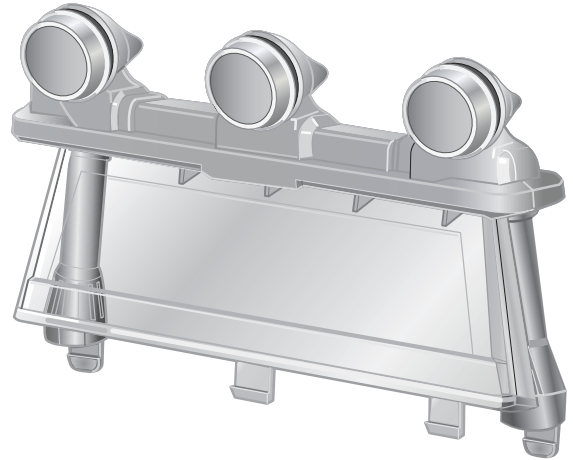
**Fisher-Price®**

[www.rescueheroes.com](http://www.rescueheroes.com)

# PARTS



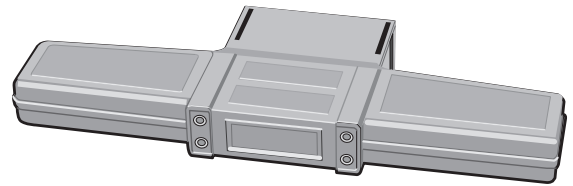
Power Module



Windshield



2 Running Boards



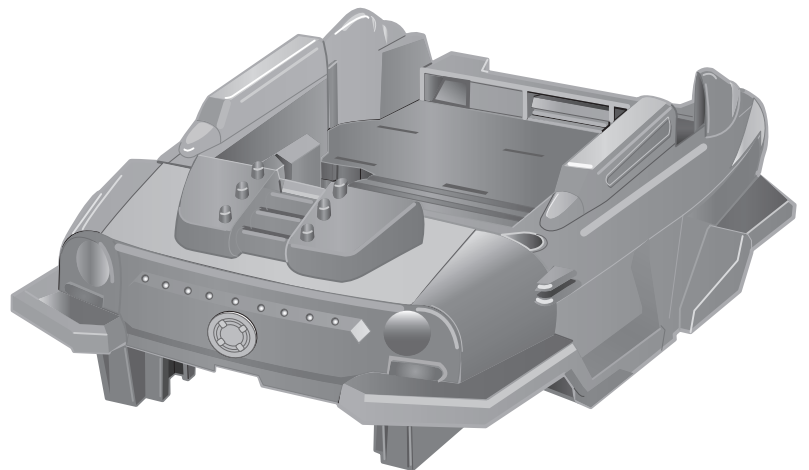
Rear Bumper



2 Rear Tires (Wide)



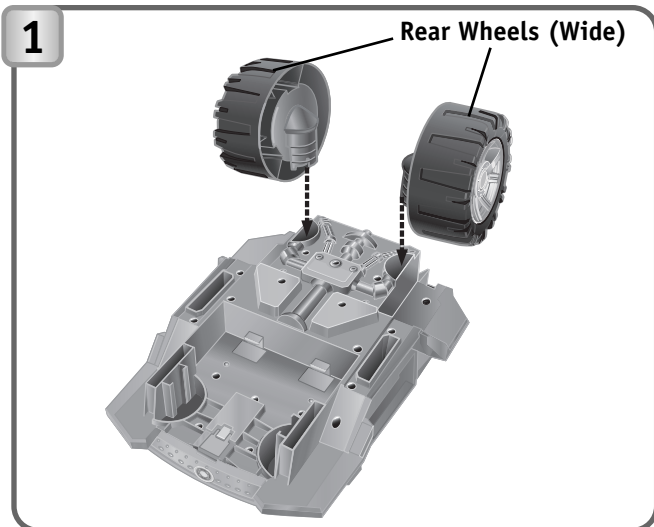
2 Front Tires (Narrow)



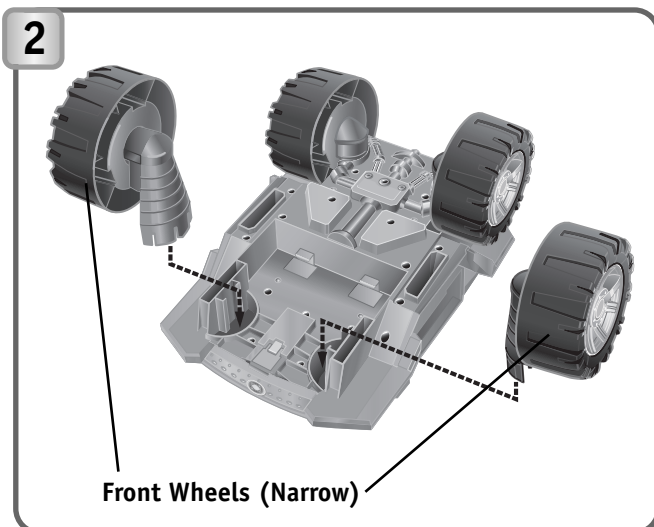
Vehicle Body

Part Not Shown: Bumperbot™

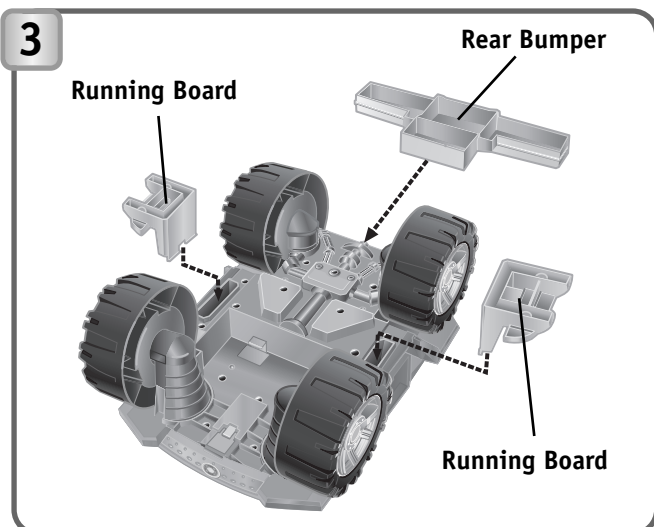
# ASSEMBLY



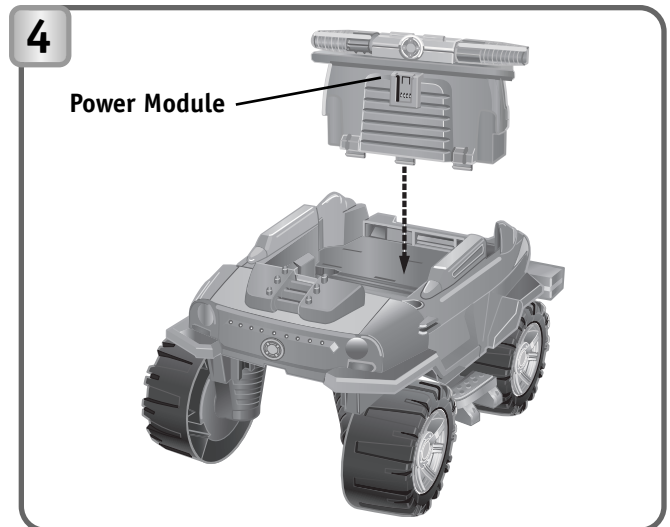
- Position the vehicle body so the bottom is facing you.
- “Snap” the two (wide) rear wheels into the vehicle body.



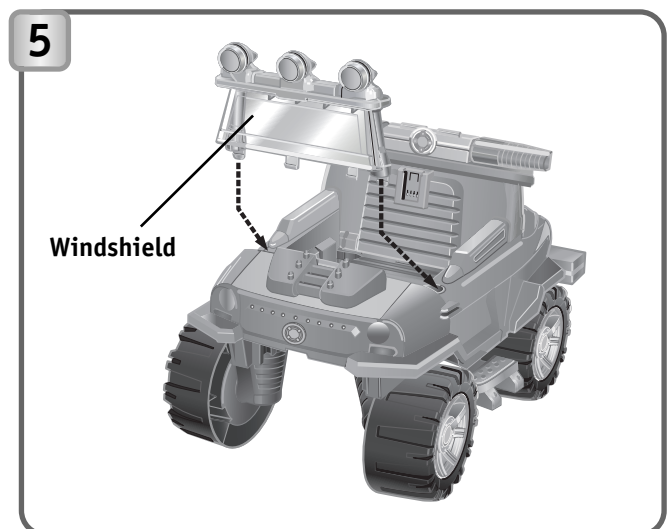
- “Snap” the two (narrow) front wheels into the vehicle body.



- “Snap” the two running boards onto the sides of the vehicle body.
- “Snap” the rear bumper into the back of the vehicle body.
- Turn the vehicle upright.

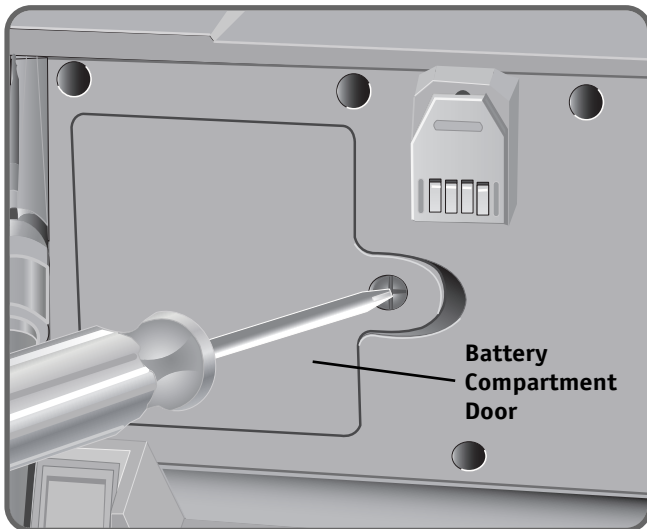


- “Snap” the power module into the vehicle body.



- “Snap” the windshield into the vehicle body.

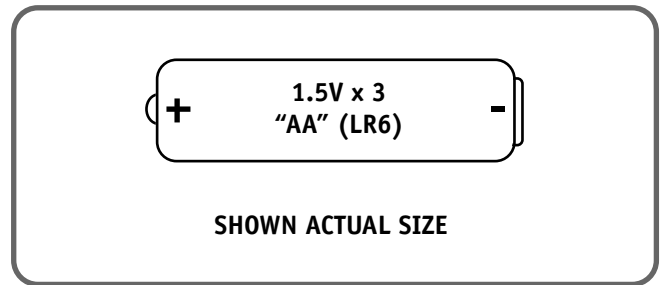
# BATTERY INSTALLATION



- Locate the battery compartment door on the back of the power module.
- Loosen the screw in the battery compartment door with a Phillips screwdriver. Remove the battery compartment door.
- Insert three "AA" (LR6) **alkaline** batteries, as indicated inside the battery compartment.

**Hint:** We recommend using **alkaline** batteries for longer life.

- Replace the battery compartment door and tighten the screw with a Phillips screwdriver. Do not over-tighten.
- When lights or sounds from this toy become faint or stop, it's time for an adult to change the batteries!



## Battery Safety Information

Batteries may leak fluids that can cause a chemical burn injury or ruin your toy. To avoid battery leakage:

- Do not mix old and new batteries or batteries of different types: alkaline, standard (carbon-zinc) or rechargeable (nickel-cadmium).
- Insert batteries as indicated inside the battery compartment.
- Remove batteries during long periods of non-use. Always remove exhausted batteries from the toy. Dispose of batteries safely. Do not dispose of batteries in a fire. The batteries may explode or leak.
- Never short-circuit the battery terminals.
- Use only batteries of the same or equivalent type, as recommended.
- Do not charge non-rechargeable batteries.
- Remove rechargeable batteries from the toy before charging.
- If removable, rechargeable batteries are used, they are only to be charged under adult supervision.

# ALL TERRAIN ACTION!

Figures sold separately and subject to availability.



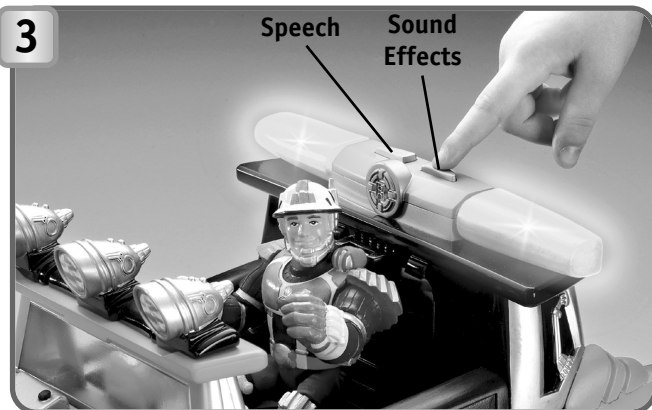
- Slide the connector on the back of any Talking Robotz Team figure into the slot on the seat.

## Hints:

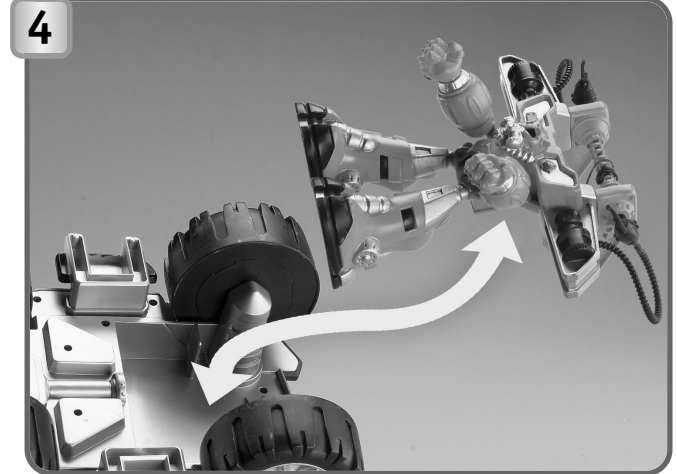
- For proper function, make sure the connector is completely inserted.
- Speech feature also works with Mission Select™ and Voice Tech™ figures.



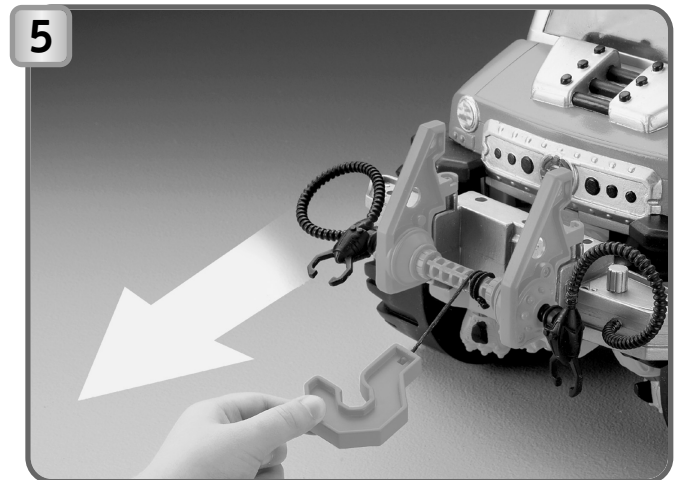
- Slide the backpack from any Talking Robotz minibot onto the connector on the back of the power module.



- Press one button on the power module to hear the figure talk about a rescue mission.
- If you have a Talking Robotz minibot attached, press this button again to hear the robot respond.
- Press the other button on the power module to hear realistic sound effects.



- The hidden Bumperbot™ magnetically attaches and detaches from under the vehicle.



- To use the tow winch, simply pull the hook. Wind the center spool to reel it back in.

## CARE

- Wipe this toy with a clean cloth dampened with a mild soap and water solution. Do not immerse this toy.
- This toy has no consumer serviceable parts. Do not take this toy apart.

### FCC Note (United States Only)

**Note:** This equipment has been tested and found to comply with the limits for a Class B digital device, pursuant to Part 15 of the FCC Rules. These limits are designed to provide reasonable protection against harmful interference in a residential installation. This equipment generates, uses and can radiate radio frequency energy and, if not installed and used in accordance with the instructions, may cause harmful interference to radio communications. However, there is no guarantee that interference will not occur in a particular installation. If this equipment does cause harmful interference to radio or television reception, which can be determined by turning the equipment off and on, the user is encouraged to try to correct the interference by one or more of the following measures:

- Reorient or relocate the receiving antenna.
- Increase the separation between the equipment and receiver.
- Consult the dealer or an experienced radio/TV technician for help.

Note: Changes or modifications not expressly approved by the manufacturer responsible for compliance could void the user's authority to operate the equipment.

## CONSUMER INFORMATION

### Questions? We'd like to hear from you!

Call Fisher-Price® Consumer Relations, toll-free at **1-800-432-KIDS**, 8 AM - 6 PM EST Monday through Friday. Hearing-impaired consumers using TTY/TDD equipment, please call 1-800-382-7470. Or, write to: Fisher-Price® Consumer Relations, 636 Girard Avenue, East Aurora, New York 14052.

For other countries outside the United States:

### CANADA

**Questions? 1-800-567-7724.** Mattel Canada Inc., 6155 Freemont Blvd., Mississauga, Ontario L5R 3W2.

### GREAT BRITAIN

Mattel UK Ltd, Vanwall Business Park, Maidenhead SL6 4UB. Helpline: 01628 500302.

### AUSTRALIA

Mattel Australia Pty. Ltd., 658 Church Street, Locked Bag #870, Richmond, Victoria 3121 Australia. Consumer Advisory Service 1300 135 312.

### NEW ZEALAND

16-18 William Pickering Drive, Albany 1331, Auckland.

### ASIA

Mattel East Asia Ltd, Room 1106, South Tower, World Finance Centre, Harbour City, Tsimshatsui, HK, China.