

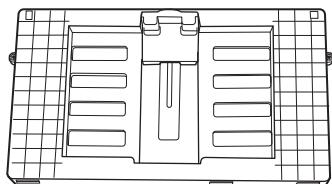
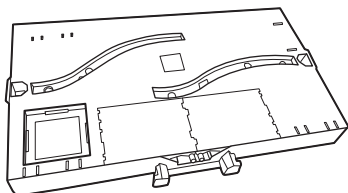
ULTIMATE ENTRANCE STAGE INSTRUCTIONS



Please keep these instructions for future reference as they contain important information.

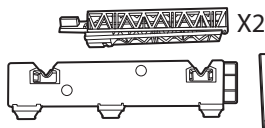
CONTENTS

WARNING:
CHOKING HAZARD - Small parts.
Not for children under 3 years.

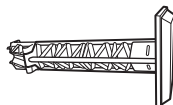
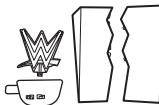
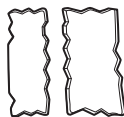
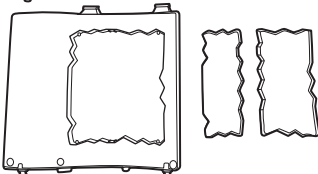
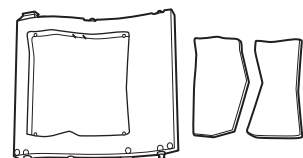


X2


X4



X2

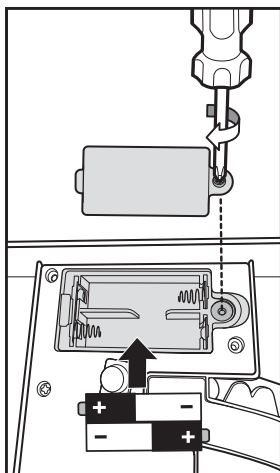


1. BATTERY INSTALLATION

 X2 AA (LR6) ALKALINE BATTERIES REQUIRED
NOT INCLUDED

- Requires 2 AA (LR6) alkaline batteries (not included).
- Unscrew the battery cover with a Phillips head screwdriver (not included).
- Install 2 new AA (LR6) alkaline batteries in the orientation (+/-) shown.
- Replace battery cover and tighten screw.
- Replace batteries if lights dim.
- For best performance, use alkaline batteries.

All WWE programming, talent names, images, likenesses, slogans, wrestling moves, trademarks, logos and copyrights are the exclusive property of WWE and its subsidiaries. All other trademarks, logos and copyrights are the property of their respective owners. © 2015 WWE. All Rights Reserved.

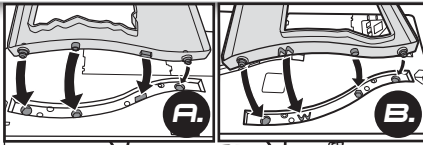
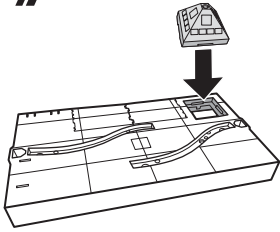


IMPORTANT: Remove tablet from playset before installing or replacing batteries.

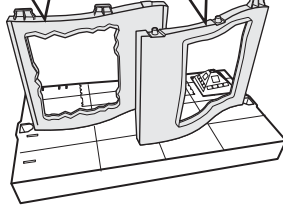
2.

ASSEMBLY: BACKSTAGE

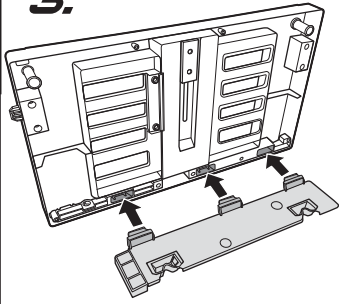
1.



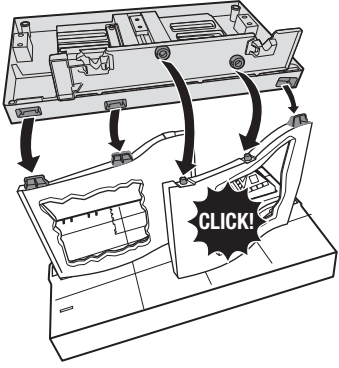
2.



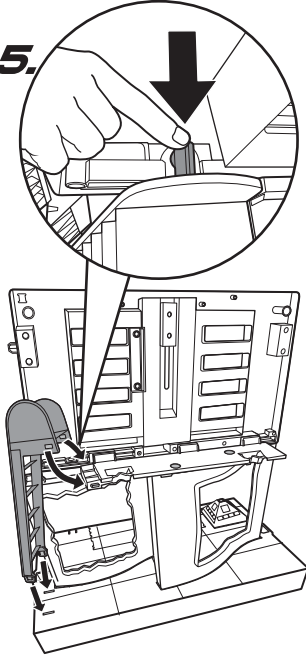
3.



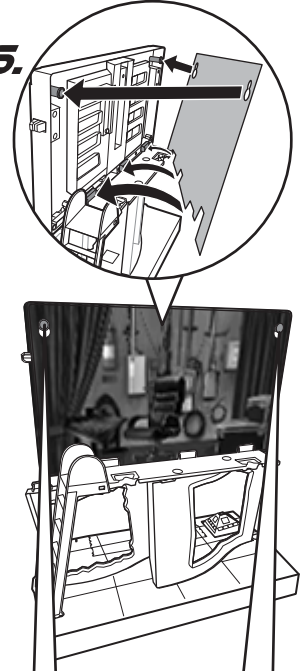
4.



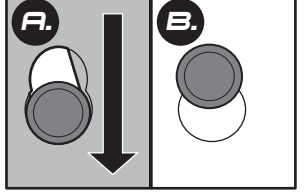
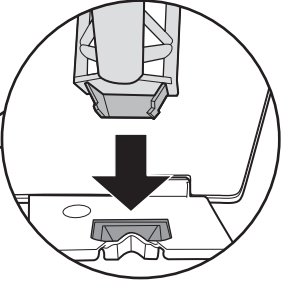
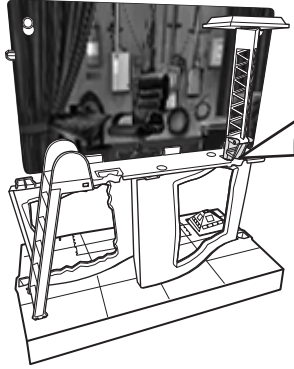
5.



6.



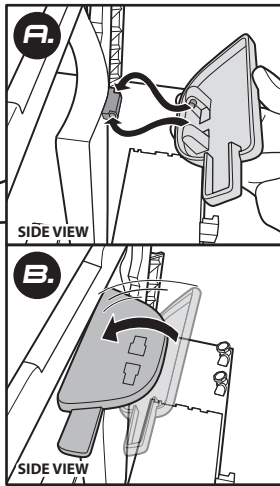
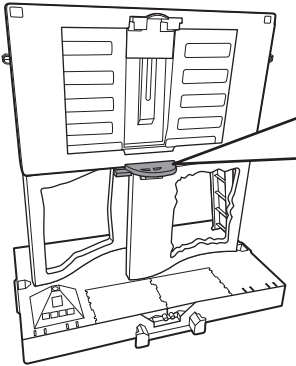
7.



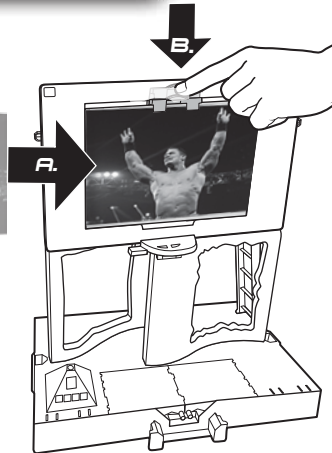
3

. ASSEMBLY: ENTRANCE STAGE

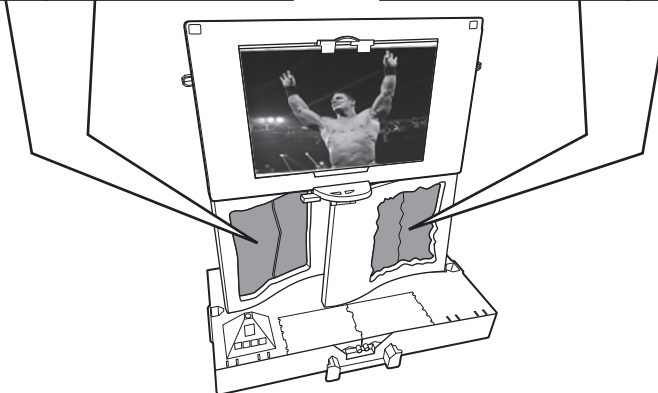
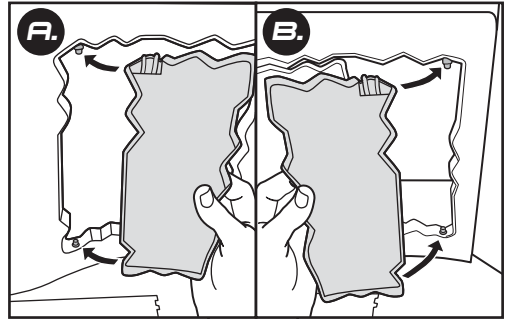
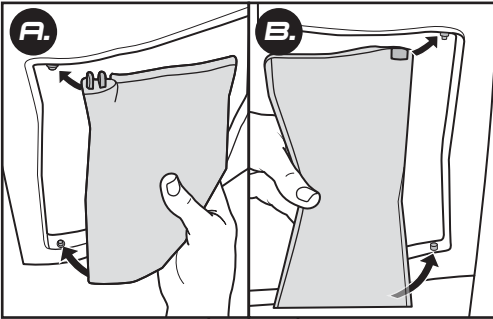
1.



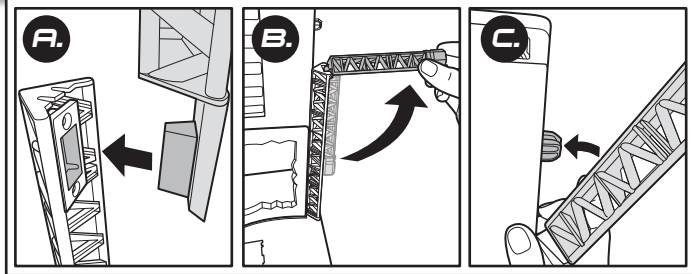
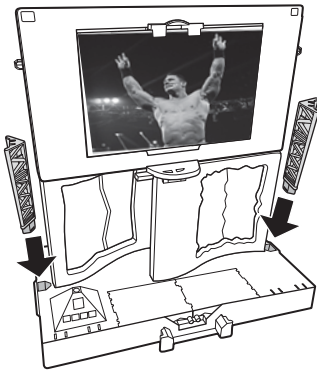
2.



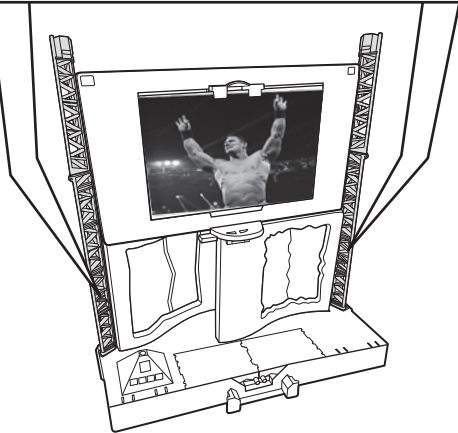
3.



4.



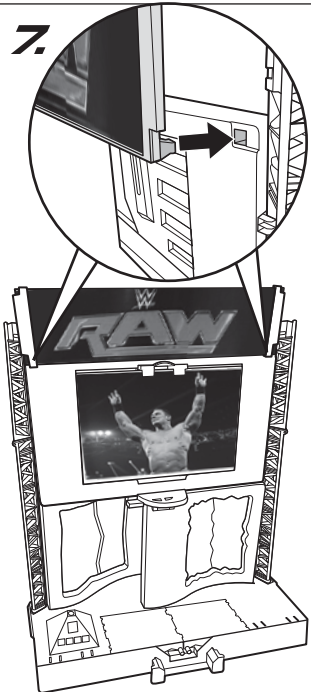
5.



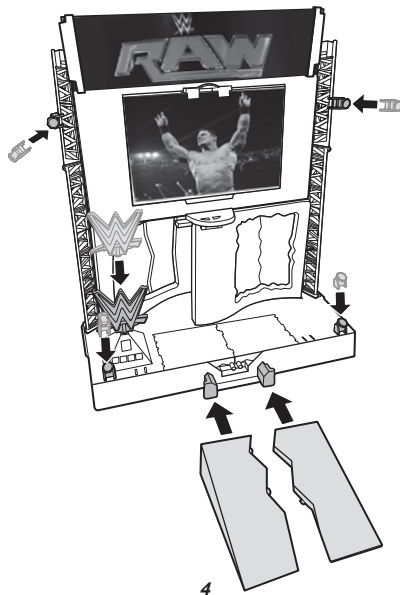
6.



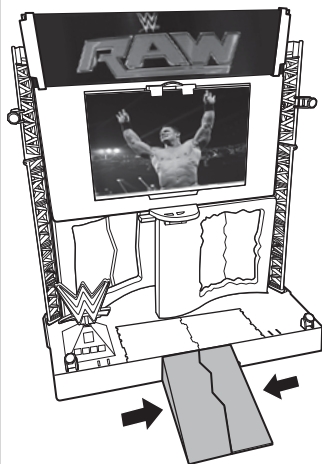
7.



8.



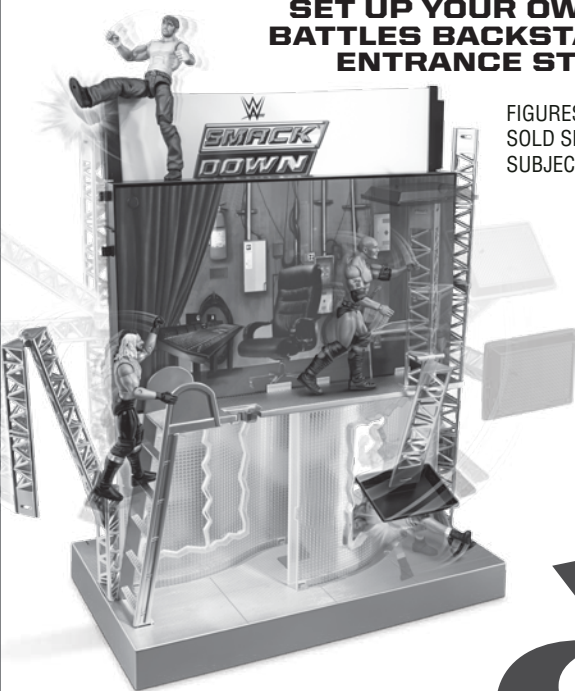
9.



4. TO PLAY

SET UP YOUR OWN EPIC BATTLES BACKSTAGE AND ENTRANCE STAGE!

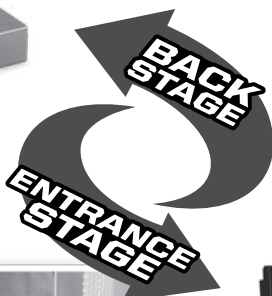
FIGURES NOT INCLUDED, SOLD SEPARATELY, SUBJECT TO AVAILABILITY.



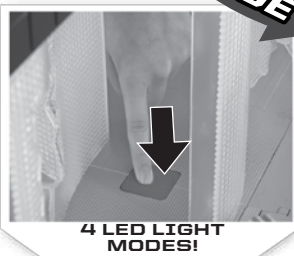
COLLAPSE THE SCAFFOLD!



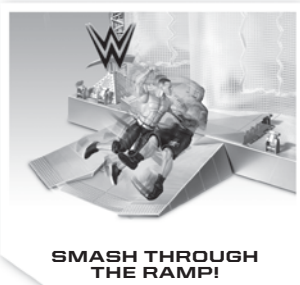
CRASH THE PLATFORM THROUGH THE PANEL



KNOCK YOUR OPPONENT THROUGH PANEL!



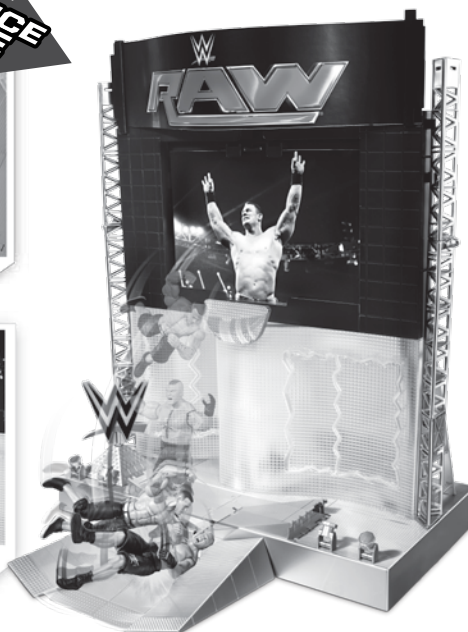
4 LED LIGHT MODES!



SMASH THROUGH THE RAMP!



PULL TURNBUCKLE TO ACTIVATE BATTLE MOVES!



5. PLAY WITH TABLET

To download the free app:

1. Using your tablet (not included), search for "WWE ULTIMATE ENTRANCE". Download and install the app.

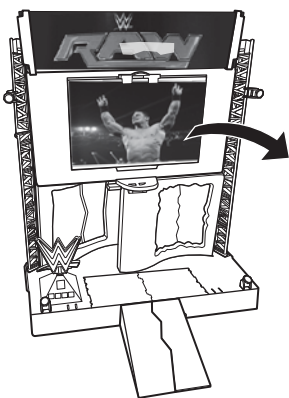


2. Start the app and follow the on-screen instructions for more ways to play!

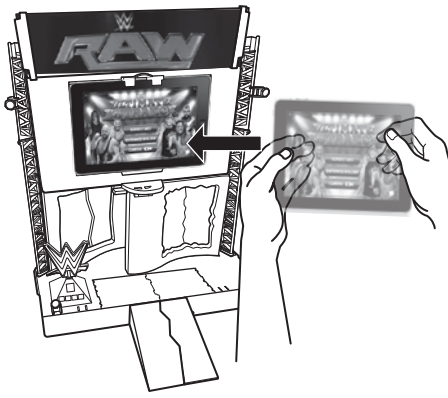


TO ATTACH TABLET TO THE TITANTRON:

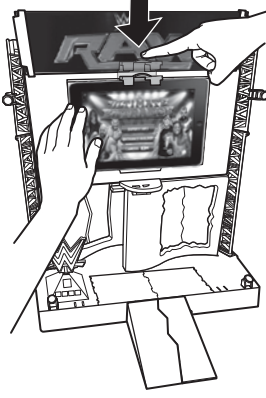
1. Remove chip art.



2. Slide tablet in.

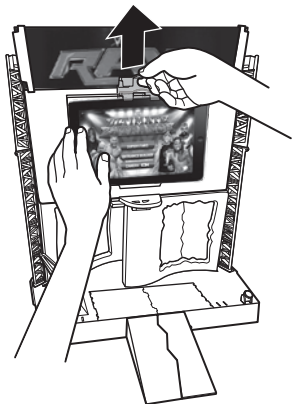


3. Push tab down to lock.

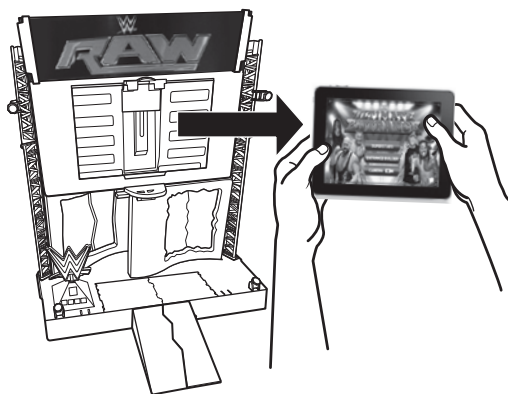


TO REMOVE TABLET FROM TITANTRON:

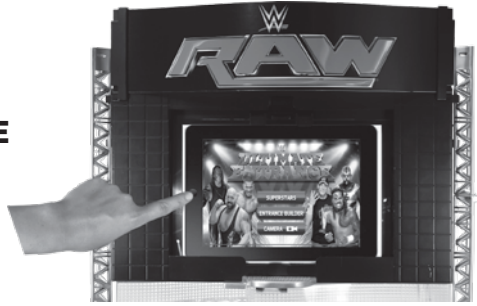
1. Push tab up to unlock.



2. Carefully slide and remove tablet from TitanTron.

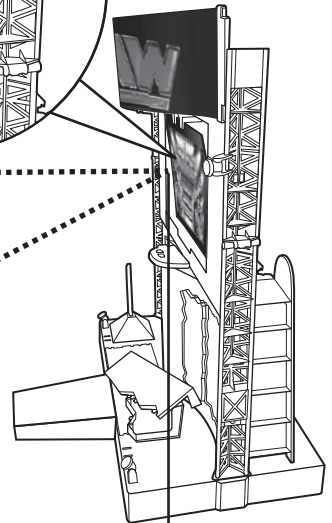
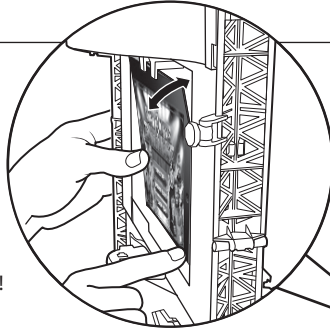


**PLAY REAL ENTRANCE
VIDEOS OR CREATE
YOUR OWN!**



**VIDEO AND REPLAY
ALL OF YOUR LIVE
WRESTLING ACTION!**

Tilt and adjust tablet for
your desired video angle!



RECOMMENDED DISTANCE: 2 ft

⚠ WARNING: Prevent serious injury. Periodically check electronic device for cracks, broken glass or other damage. If damaged, immediately remove from this product.

SYSTEM REQUIREMENTS



iPad® 2, iPad (3rd Generation), iPad mini™, iPad mini 2, iPad mini 3, iPad (4th Generation), iPad Air®, iPad Air 2, iOS 7 and above



Compatible with Android™ devices running Android 4.2.2 and with a rear-facing camera.

Android and Google Play are trademarks of Google Inc.



Compatible with Fire HDX 8.9, Fire HD 7, and Fire HD 6 with rear-facing cameras.

4. TO PLAY

SET UP YOUR OWN EPIC BATTLES BACKSTAGE AND ENTRANCE STAGE!

FIGURES NOT INCLUDED, SOLD SEPARATELY, SUBJECT TO AVAILABILITY.

