



RC RIVALS SET

8+

QUICK START GUIDE

1

DOWNLOAD APP

DOWNLOAD THE FREE HOT WHEELS® ROCKET LEAGUE® APP FOR YOUR APPLE OR ANDROID DEVICES.

VISIT [HOTWHEELS.COM/ROCKETLEAGUE](https://www.hotwheels.com/rocketleague) TO CHECK DEVICE COMPATIBILITY.

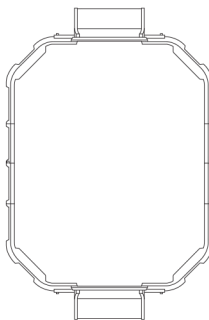


Q Hot Wheels Rocket League

2

ASSEMBLE ARENA

OPEN THE APP AND FOLLOW ON-SCREEN INSTRUCTIONS TO ASSEMBLE STADIUM WITH LCD SCOREBOARDS.

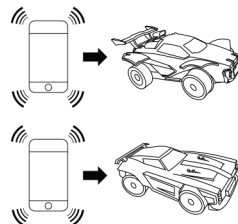


Smart Devices not included.

3

PLAY GAME

FOLLOW ON-SCREEN INSTRUCTIONS TO CONNECT YOUR VEHICLES.



DOWNLOAD FREE DLC

1. Log onto your Rocket League® game using your platform of choice (PlayStation® 4, Xbox™ One, Nintendo Switch™ or Steam™).
2. Select 'Extras' on the 'Main Menu' and 'Redeem Code'.
3. Enter your valid 12-digit redemption code and select 'OK'.



Each quick start guide has a specific code



Rocket League® game sold separately. You can only redeem the code once. Online connection and accounts on Steam™, Xbox Live™, PlayStation™ Network or Nintendo Switch™ required. Codes are not transferable and subject to Rocket League's Term of Use at: [rocketleague.com/tou](https://www.rocketleague.com/tou) ([rocketleague.com](https://www.rocketleague.com)). Void where prohibited by law. Need help redeeming your Rocket League code? Contact us at support@rocketleague.com.

Rocket League, Psyonix, and all related marks and logos are trademarks or registered trademarks of Psyonix Inc. and used under license. © 2015-2018 Licensed by Psyonix Inc. All rights reserved. All other trademarks are property of their respective owners.

Expiration date: August of 2020

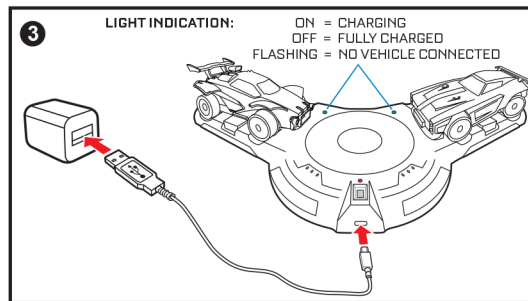
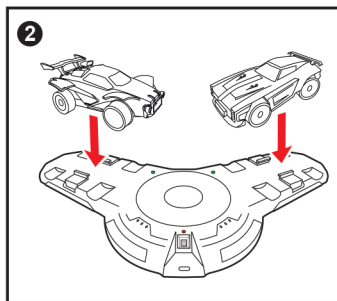
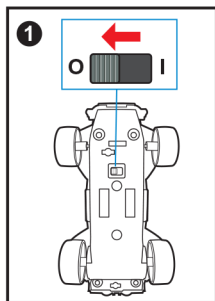
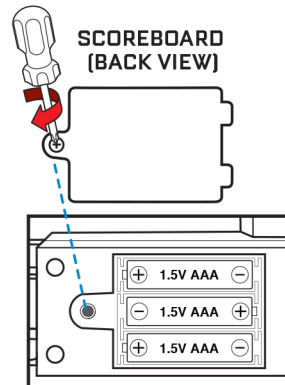
⚠ CAUTION: To prevent entanglement, keep all hair away from the wheels.

SET UP LCD SCOREBOARDS

1. INCLUDES 6 NEW AAA (LR03) ALKALINE BATTERIES.
2. REQUIRES 3 AAA (LR03) ALKALINE BATTERIES FOR EACH LCD SCOREBOARD.
3. UNSCREW THE BATTERY COVER(S) WITH A PHILLIPS HEAD SCREWDRIVER (NOT INCLUDED).
4. INSTALL 3 AAA (LR03) ALKALINE BATTERIES INCLUDED IN EACH OF THE SCOREBOARDS IN THE ORIENTATION (+/-) SHOWN.
5. REPLACE THE BATTERY COVER(S) AND TIGHTEN SCREW(S).
6. REPLACE BATTERIES IF SOUNDS DISTORT OR LIGHTS DIM.
7. DISPOSE OF BATTERIES SAFELY. FOR LONGER LIFE, USE ALKALINE BATTERIES.
8. SWITCH ON BOTH OF THE SCOREBOARDS BEFORE PLAY.

CHARGE YOUR VEHICLES

- 1 SWITCH OFF VEHICLES BEFORE CHARGING.
- 2 LOCATE CONNECTION POINTS AND PLACE VEHICLES ONTO THE CHARGER.
- 3 PLUG THE SUPPLIED USB CABLE INTO THE CHARGER. PLUG THE OTHER END OF THE CABLE INTO A POWERED USB PORT.



NOTE: THE PRODUCT IS EQUIPPED WITH AN AUTOMATIC SHUT-OFF FEATURE THAT HELPS PRESERVE BATTERY LIFE.

- VEHICLES CONTAIN BATTERIES THAT ARE NON-REPLACEABLE.
- IF THE VEHICLE OR SCOREBOARD MALFUNCTIONS, SWITCH IT OFF FOR A FEW SECONDS, THEN ON AGAIN TO RESET.
- DO NOT PICK UP THE VEHICLE WHILE IT IS IN MOTION.
- KEEP FINGERS, HAIR AND LOOSE CLOTHING AWAY FROM THE WHEELS WHILE THE VEHICLE IS SWITCHED ON.
- ADULT SUPERVISION IS RECOMMENDED WHILE THIS TOY IS BEING OPERATED.
- THIS PRODUCT IS NOT RECOMMENDED FOR USE ON LOOSE DIRT OR WET SURFACES.
- WORKS BEST AWAY FROM HIGH VOLTAGE POWER LINES, LARGE BUILDINGS AND WALLS.
- WHEN THE PRODUCT DOES NOT RESPOND, SLOWS DOWN, OR LOSES RANGE, RECHARGE VEHICLE(S) OR REPLACE BATTERIES IN SCOREBOARD(S).
- PLAY SAFELY! – DO NOT DRIVE VEHICLE IN THE STREET!

BATTERIES INSIDE VEHICLES ARE NOT INTENDED TO BE REPLACED OR REMOVED BY CONSUMERS. BEFORE DISPOSAL IN THE WASTE STREAM, BATTERIES INSIDE VEHICLES MUST BE REMOVED BY A QUALIFIED PROFESSIONAL AND DISPOSED OF SEPARATELY ACCORDING TO LOCAL REGULATIONS ON BATTERY COLLECTION AND RECYCLING.

THE TOY IS ONLY TO BE CONNECTED TO EQUIPMENT BEARING THE FOLLOWING SYMBOL: [] or [].

TOYS LIABLE TO BE CLEANED WITH LIQUIDS ARE TO BE DISCONNECTED FROM THE POWER SUPPLIES BEFORE CLEANING. DO NOT CONNECT TO MORE THAN THE RECOMMENDED NUMBER OF POWER SUPPLIES. FOR USE WITH ROCKET LEAGUE® VEHICLES ONLY. PLEASE KEEP THESE INSTRUCTIONS FOR FUTURE REFERENCE AS THEY CONTAIN IMPORTANT INFORMATION.

FCC ID: PIY-FWP45-18-A5V FCC ID: PIY-FWP45-18-A5G

Please see [HOTWHEELS.COM/ROCKETLEAGUE](https://www.hotwheels.com/rocketleague) for more information, including support extension updates.

©2018 Mattel.

Apple, the Apple logo, iPhone, and iPad are trademarks of Apple Inc., registered in the U.S. and other countries and regions. App Store is a service mark of Apple Inc. Google Play and the Google Play logo are trademarks of Google LLC. Bluetooth® and Bluetooth® Smart wordmark and logos are owned by Bluetooth SIG, Inc.

CHECK IF YOUR SMART DEVICE IS COMPATIBLE:
[HOTWHEELS.COM/ROCKETLEAGUE](https://www.hotwheels.com/rocketleague)



FWP45-0970
1102002467-Dom