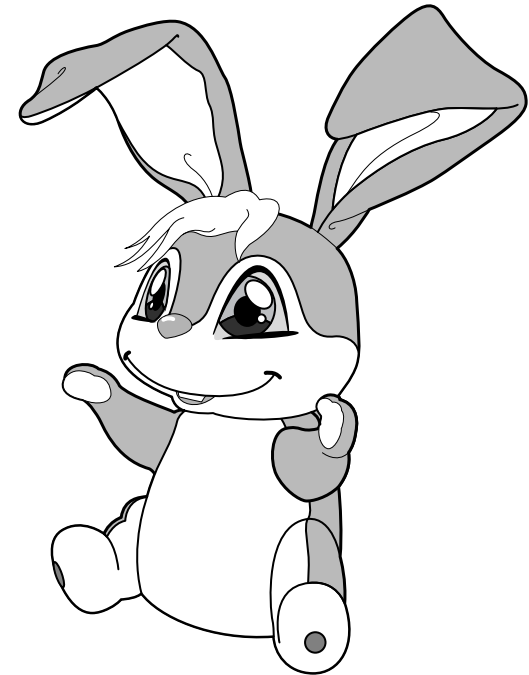




# Kiko of WINX CLUB™ Bunny INSTRUCTIONS

## CONTENTS



**WARNING:**  
**CHOKING HAZARD** - Small parts.  
Not for children under 3 years.

Includes 3 replaceable LR44 button cell batteries.  
Dispose of batteries safely.

Colors and decorations may vary from those shown.

Please remove everything from the package and  
compare to the contents shown here.  
If any items are missing, please call 1-800-524-TOYS.

*Keep these instructions for future reference as they contain important information.*

Winx Club™ logo, all related characters and elements are trademarks of Rainbow S.r.l.

©2004 All rights reserved.

©2004 Mattel, Inc. All Rights Reserved.

**4+**



G8478-0920

### CONSUMER INFORMATION

**YOU CAN TELL IT'S MATTEL!**™ CALL us toll-free or write with any comments or questions about our products or service. Monday-Friday 8:00 a.m.-6:00 p.m. Eastern Time. Outside U.S.A., see telephone directory for Mattel listing.

**Consumer Relations, Mattel, Inc.**  
333 Continental Blvd.  
El Segundo, CA 90245 USA

**1(800) 524-TOYS**

**WE ARE DEDICATED TO QUALITY PRODUCTS.**

Mattel U.K., Ltd., Vanwall Business Park, Maidenhead SL6 4UB. Helpline 01628500303.

Mattel Australia Pty., Ltd., Richmond, Victoria 3121. Consumer Advisory Service 1300 135 312 (valid only in Australia).

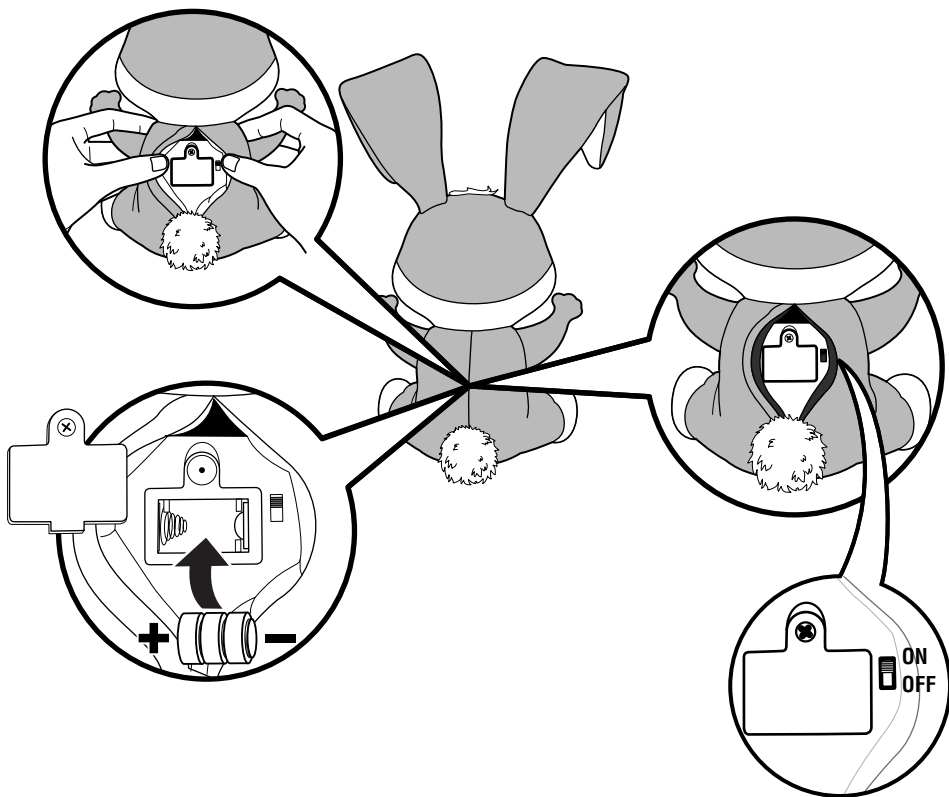
Mattel East Asia Ltd, Room 1106, South Tower, World Finance Centre, Harbour City, Tsimshatsui, HK, China.

Diimport & Diedarkan Oleh: Mattel SEA Ptd Ltd.(993532-P) Lot 13.5, Menara Lien Hoe, Persiaran Tropicana Golf Country Resort, 47410

## Battery Replacement

For longer life use only alkaline batteries. Requires 3 AG13 or LR44 alkaline button cell batteries.

Toy includes 3 replaceable AG13 or LR44 alkaline button cell batteries. Replace batteries when sound becomes distorted. To replace batteries, use a Phillips head screwdriver (not included) to open battery door. Remove and set aside. Insert 3 replaceable AG13 or LR44 alkaline button cell batteries as shown. Use either AG13 or LR44 alkaline button cell batteries or equivalent. Replace battery cover and screw closed.



### BATTERY SAFETY INFORMATION

In exceptional circumstances batteries may leak fluids that can cause a chemical burn injury or ruin your toy. To avoid battery leakage:

- Non-rechargeable batteries are not to be recharged.
- Rechargeable batteries are to be removed from the toy before being charged.
- Rechargeable batteries are only to be charged under adult supervision.
- Do not mix alkaline, standard (carbon-zinc), or rechargeable (nickel-cadmium) batteries.

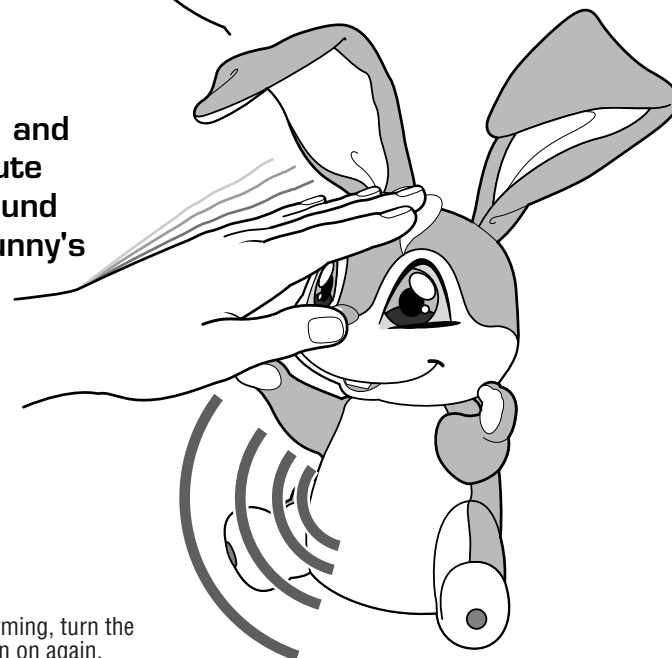
- Do not mix old and new batteries.
- Only batteries of the same or equivalent type as recommended are to be used.
- Batteries are to be inserted with the correct polarity.
- Exhausted batteries are to be removed from the toy.
- The supply terminals are not to be short-circuited.
- Dispose of batteries safely.
- Do not dispose of this toy in a fire. The batteries inside may explode or leak.

## How to play with Kiko of Winx Club™!



Press foot to ask bunny a question, then press again to get the answer.

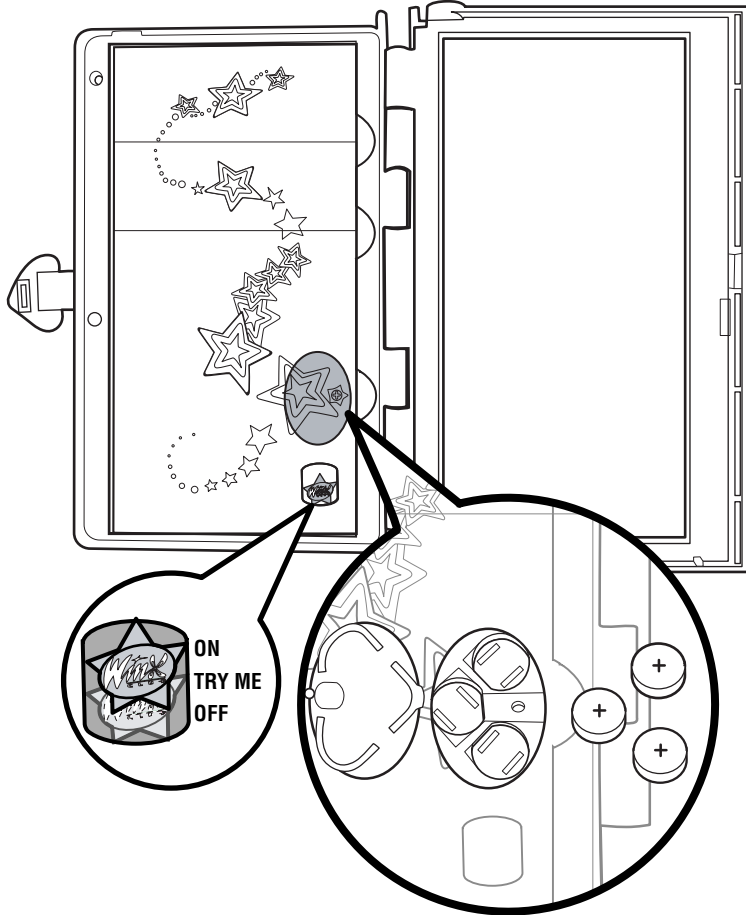
Pet head and hear a cute bunny sound or the bunny's name.



If toy is not performing, turn the switch off and then on again.

## Battery Replacement

For longer life use only alkaline batteries. Requires 3 AG13 or LR44 alkaline button cell batteries. Toy includes 3 replaceable AG13 or LR44 alkaline button cell batteries. Replace batteries when sound becomes distorted. To replace batteries, use a Phillips head screwdriver (not included) to open battery door. Remove and set aside. Insert 3 replaceable AG13 or LR44 alkaline button cell batteries as shown. Use either AG13 or LR44 alkaline button cell batteries or equivalent. Replace battery cover and screw closed.



### BATTERY SAFETY INFORMATION

In exceptional circumstances batteries may leak fluids that can cause a chemical burn injury or ruin your toy. To avoid battery leakage:

- Non-rechargeable batteries are not to be recharged.
- Rechargeable batteries are to be removed from the toy before being charged.
- Rechargeable batteries are only to be charged under adult supervision.
- Do not mix alkaline, standard (carbon-zinc), or rechargeable (nickel-cadmium) batteries.

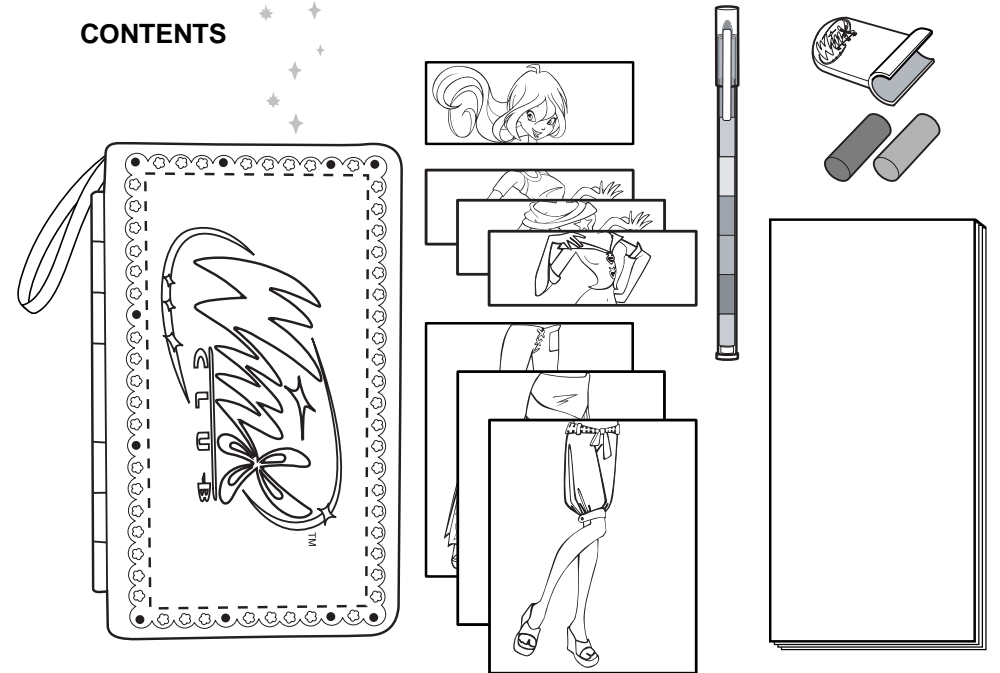
- Do not mix old and new batteries.
- Only batteries of the same or equivalent type as recommended are to be used.
- Batteries are to be inserted with the correct polarity.
- Exhausted batteries are to be removed from the toy.
- The supply terminals are not to be short-circuited.
- Dispose of batteries safely.
- Do not dispose of this toy in a fire. The batteries inside may explode or leak.



# Magic Talking Fairy Plates™

## INSTRUCTIONS

### CONTENTS



**WARNING:**  
CHOKING HAZARD - Small parts.  
Not for children under 3 years.

Includes 3 replaceable LR44 button cell batteries.  
Dispose of batteries safely.

Colors and decorations may vary from those shown.

Please remove everything from the package and compare to the contents shown here.

If any items are missing, please call 1-800-524-TOYS.

*Keep these instructions for future reference as they contain important information.*

Winx Club™ logo, all related characters and elements are trademarks of Rainbow S.r.l.

©2004 All rights reserved.

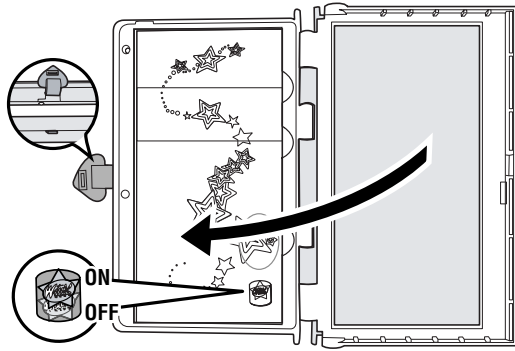
©2004 Mattel, Inc. All Rights Reserved.



# Mix, Match, Color & Design!

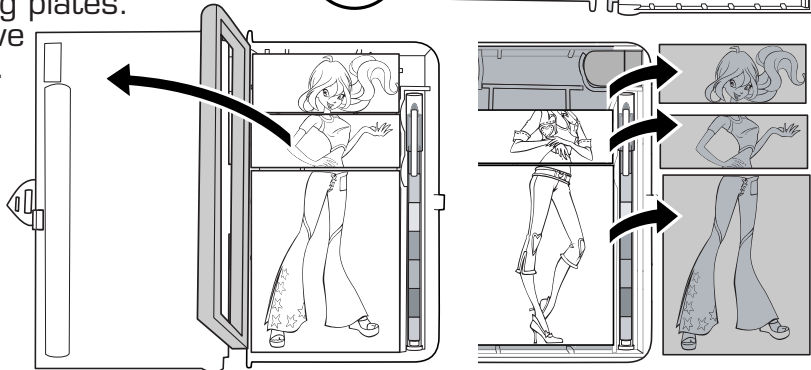
**1**

Open up the case by unsnapping the heart-shaped snap. Turn power on.

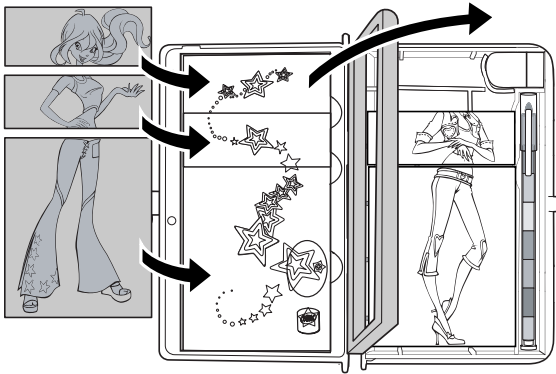


**2**

Open right side of case to find rubbing plates. Remove plates.



**3**

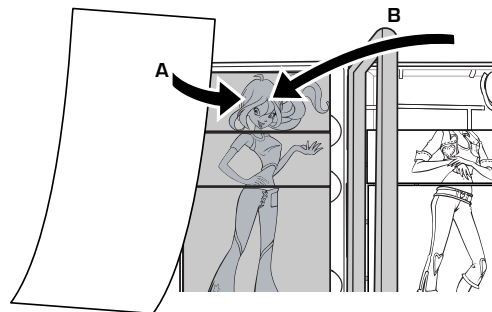


Lift up frame. Lay down plates in order.

(Both sides of plates can be used for 72 different looks.)

**4**

Place sheet of paper on plates (A). Close frame to hold paper in place (B). Frame will say 1 of 4 phrases when closed.



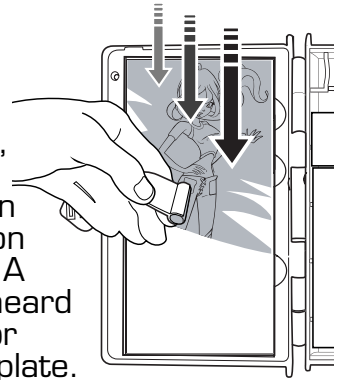
**5**

Take burnisher with crayon. (Extra crayon piece is included.)



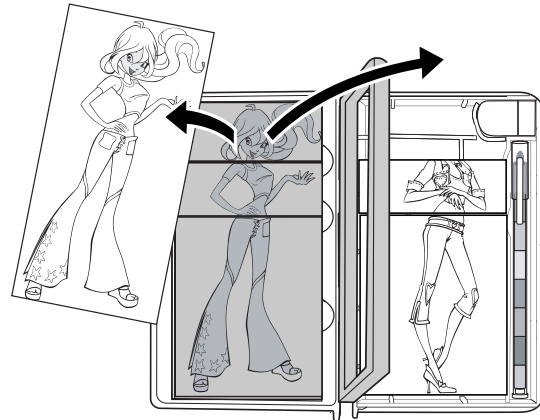
**6**

Rub burnisher over paper, and the plate design shows up on the paper. A phrase is heard as you color over **each** plate.



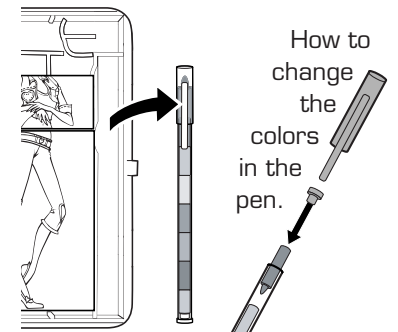
**7**

Take paper out of frame.



**8**

Use multi-colored pen to color artwork.



How to change the colors in the pen.

**9**

Slip your completed artwork into the plastic sleeve on the front of the case.

