

Digi Makeover™

E



Model 76020
For 1 or 2 users/Ages 6 and up
Instruction Manual

P/N 823A3300 Rev.B



www.girltech.com



Hi! If you don't already know me, I'm Tech Girl. I'm here to help you discover new fashion looks and hairstyles. Plus have tons of fun with Digi Makeover!

First, let me show you how to set up Digi Makeover

WARNING:

EPILEPSY AND SEIZURES READ BEFORE OPERATING YOUR DIGI MAKEOVER

A few people may experience epileptic seizures when viewing flashing lights or patterns in our daily environment. These persons may experience seizures while watching TV pictures or playing video games. Players who have not had any seizures may nonetheless have an undetected epileptic condition.

Consult your physician before playing video games if you have an epileptic condition or experience any of the following symptoms while playing video games: altered vision, eye or muscle twitching, other involuntary movements, loss of awareness of your surroundings, mental confusion and/or convulsions.

SET UP

BATTERY INSTALLATION

This game is powered by four (4) AA (LR6) batteries.

- Using a screwdriver, loosen the screw until the battery compartment door can be removed.
- Insert four (4) AA (LR6) batteries (we recommend alkaline) as indicated inside the battery compartment.
- Replace the battery compartment door and tighten the screw with a screwdriver. Do not over-tighten.

ADULT SUPERVISION IS RECOMMENDED WHEN CHANGING BATTERIES.



CONNECTING TO YOUR TV

To connect Digi Makeover directly to a TV, the TV must be equipped with audio and video input jacks. They are commonly found on the front of the TV near the contrast, color, and picture adjustment controls; or on the back of the TV near the antenna and cable/satellite jacks.

Insert the yellow video plug from the game into the Video-In (yellow) jack on the TV.

Insert the white audio plug from the game into the left Audio-In (white) jack on the TV.

Set your TV to the appropriate video input mode. (See your TV's operating manual for details.)

CONNECTING TO YOUR VCR

If your TV doesn't have audio and video input jacks, you can connect Digi Makeover to your VCR.

Insert the yellow video plug from the game into the Video-In (yellow) jack on the VCR.

Insert the white audio plug from the game into the left Audio-In (white) jack on the VCR.

Set your TV and VCR to the appropriate video input mode. (See your TV and VCR operating manuals for details.)

NOTE: If your TV or VCR does not have AV inputs, a "Y" adapter may be purchased separately at any electronics store.

ADULT SUPERVISION IS RECOMMENDED WHEN CONNECTING CABLES TO A TV AND VCR.



PRODUCT FEATURES:






Welcome back! Not only do you have the opportunity to take your own picture with the built in camera but we've also included 6 different models for you to practice all your new styles and techniques.

Applying your makeup can be so much fun! Using the touch pad display you can control how much make up you apply, easily change colors and add accessories to finish off your new look.

GETTING STARTED

Here's a quick look at all of the buttons on the Digi Makeover touchpad. These buttons will help you navigate quickly and easily through your makeover!

-  Go back to the previous screen
-  Go to the next screen
-  Undo your last action



 Save your work

 Saved slot

 Warning! If you press back button again all work will be lost!

 Scroll left & right through selections

 Scale selected item up and down

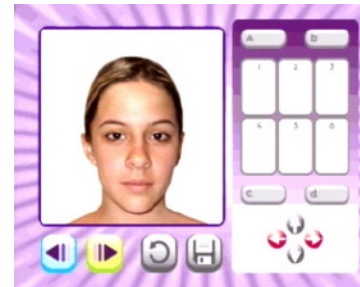
 Move selected item apart or together

 Scroll left & right through palette choices

 Move selected features and scrolls through models

TECH GIRL TOUCHPAD TIPS

You can only choose the icons which are highlighted. Grayed out icons are not available.



Each time you press the back button you will go back a screen until you reach the main menu



- 2 Face icon - if you want to start a new makeover continue by pressing the back button. However, if you do not want to start a new makeover press the next button
- To apply selected color from the palette use the stylus to finalize your selection



MENU ICONS

Now that you know what all of the buttons on the touchpad do let's take a look at all of the Makeover Icons in Digi Makeover.

- | | | | |
|--|--|--|----------------------|
| | Makeover Mode | | Photobooth Mode |
| | Select from existing models and pictures | | Saved Pictures Album |
| | Digi - Camera Mode | | Eye Brow Mode |
| | Eyes Makeover Mode | | Eye Shadow Mode |
| | Eye Brow Applicator | | Eye Liner Mode |
| | Eye Shadow Applicator | | Eye Color Mode |
| | Eye Liner Applicator | | |



- | | | | |
|--|------------------------|--|--------------------------------|
| | Eye Color Applicator | | Lips Mode |
| | Lipstick Mode | | Lipstick Applicator |
| | LipGloss Mode | | Lip Gloss Applicator |
| | Blush Mode | | Blush Applicator |
| | Dimples Mode | | Dimples Applicator |
| | Hair & Face Paint Mode | | Hair & Face Paint Applicator |
| | Accessories Mode | | Earrings |
| | Necklaces | | Earring & Necklaces Applicator |
| | Hair Mode | | Phunky Fashion Long & Lovely |
| | Chin & Charming | | Short Sensations |
| | Updo Elegance | | Hair Accessories |
| | Hair Applicator | | Hair Accessories Applicator |

Now that you know how Digi works how about a practice makeover to perfect your makeover skills! There are 6 models just waiting for a new look that only you can give them.

To scroll through the models use the red arrows. Once you find the model of your choice press the next button and follow these fun steps!

- Choose the eye icon to makeover eyebrows, eyelids and even change eye color



- Select the eyebrow icon
- Use the a/b buttons to scroll through the different eyebrow shape choices. Press the corresponding number icon to make your selection
- If necessary, use the red arrows to move the selected eyebrows in position on the models face
- Press the next button to change the shape of the eyebrows. Using the a+/a- buttons to make eyebrows thicker or thinner and the c/d buttons to move eyebrows in and out. Move to the next step by pressing the next button!
- The color palette will appear in the boxes numbered 4,5, & 6 and the eyebrow applicator icon will appear on the screen. Using the c/d buttons scroll through to find the perfect color! Press the corresponding number icon to make your selection. No worries, if this is not the color you want, you can still change your selection. Simply choose another color!
- To apply your selected color to the model use your stylus and make a back and forth motion across your touchpad. Awesome! Remember, just like in real life the more you apply the darker the color.
- It's easy to change the color even after you applied it with your stylus. Simply press the Undo button and choose another color from the color palette!
- After you have applied the color of choice press the next button to go back to the main menu and continue your makeover!

Now you are ready to continue your makeover by exploring each icon on the main menu! Follow the fun easy steps above to apply eyeshadow, lipstick, lip gloss, blush, face tattoos, accessories and hair!

TECH GIRL MAKEOVER TIPS

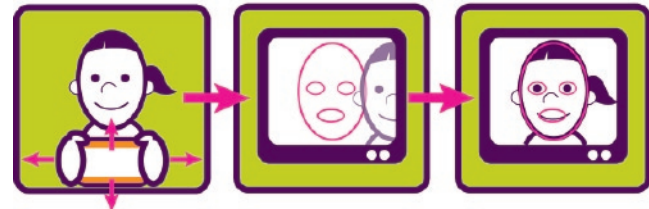
- Don't forget to use the red arrows to scroll through the Digi Makeover models
- With each stroke of your stylus your color choice will get darker!



- Use the undo button if you decide that's not the look you were going for!

Does your model look Awesome? Are you ready to give yourself a Digi Makeover?

1. Let's start with a clean palette, your face! Remove any make up you may have on your face and pull your hair away from your face or into a pony-tail.
2. Lights, Camera, Makeover! Even Super Models need good lighting when having their picture taken or applying makeup! Now, let's find the optimal lighting in your house. Turn all lights in your room on and position them between you and your TV. The brighter your lights the brighter your picture!
3. Now you are ready to take your picture with the built in digital camera. Sit directly in front of your TV. Hold Digi Makeover slightly lower than eye level so you can see the TV screen. Line your face up with the outline shown on your screen. Remember to keep your mouth closed; this will help when applying your lipstick later! When you are ready press the Shutter button.



Match your Face to the "Face" Outline



TECH GIRL TIP

- Before taking your picture make sure your hair is pulled away from your face or in a ponytail. Also, keep your lips together and try not to smile! Take a look at our Digi Makeover models and pose just like them.
4. How do you look? If you like your picture, press the save button on your touchpad. If you want to try again, press the back button, or the left shoulder button to start over!

Please note: You can save up to 5 images. Once an image has been saved it will appear as an option in the Model selection screen!

Please note: The stored images are lost when the batteries are removed!

TECH GIRL TIPS

- Lights, Lights, Lights. Make your room as bright as possible and try to keep the lights between you and your TV. (See Quick Guide Insert for more picture taking tips!)
- It's best to apply lipstick when your lips are together. So, show that beautiful smile but not your teeth!
- Make sure there are no windows or lights in the camera view behind you.



TROUBLE SHOOTING

TV

To locate your auxiliary channel, which is usually not 3 or 4, but a gaming channel found between 2 and 99 (example 2, 1, 0, 99), first try 00 to see if it is the auxiliary channel. Channels downwards from 3 until a Line 1 or Line 2, Video 1 or Video 2, Front, Aux, AV, etc., appears on screen, then push the power button on the game and it should automatically come on if you have selected the correct channel. If this does not work, another way to determine your auxiliary channel is to take a look at your television remote. There may be a button on the remote that may take you directly to the correct channel. The buttons you are looking for may be labeled Input, AUX, AV, Line, TV/Video, or Video. If your remote has one of these buttons, turn your television back to Channel 3 and select that button. The power button on the game should be turned on in order for the game to appear on the television. If your television remote does not have any of these buttons, and channel 00 is not working, you may need to search the main menu for a way to determine your auxiliary channel. If none of these methods have helped you locate your auxiliary channel, you may need to check your owner's manual and/or contact a local television repair company.

VCR

When connecting to a VCR, you must first start with a blue background showing on your television screen. To obtain a blue screen, try inserting a videotape into the VCR, let it start to play, then hit the stop button. This may give you a blue screen, then you can channel down to your auxiliary channel. If the blue screen still does not appear, try entering your TV and/or VCR main menu and see if it gives you options to select a blue screen background. Many times if you enter the main menu on your television you can change the setting from cable to video and display a blue screen. Also if you have an older television, you may locate a hidden door on your television that has color, picture, horizontal, vertical, and cable, antennae buttons. If your television includes this panel, you can select the antennae/cable button and see the blue screen appears. If you have tried all of these options and are still unsuccessful connecting the console, then you may need to check your VCR owner's manual or contact the manufacturer to find out how to set up your VCR for console games.



Remember, you can't play our games through a cable box or satellite, so if you own one of these make sure it is turned off before connecting the game. You can connect our games through DVD players with the same connection as a VCR.

If you still have difficulty with setup or operation of your game, please call our players helpline mentioned at the end of this manual.

If you choose to use an AC Adapter we suggest the following :

Recommended Adaptor Output:

- Voltage: 6 Volts DC
- Current: 300 mA (minimum)

Polarity: Negative Center

Plug Size: 5.5 mm outside diameter, 2.1 inside diameter.

AC Adapters are available at most electronic stores.

If you use the product with a transformer, regularly examine for damage to the cord, plug, enclosure and other parts. In the event of any damage, do not use the toy with the transformer.

CAUTION

- As with all small batteries, the batteries used with this device should be kept away from small children who might still put things in their mouths. If a battery is swallowed, consult a physician immediately.
- Be sure you insert the battery correctly and always follow the device and battery manufacturer's instructions.
- Do not dispose of batteries in fire.
- Batteries might leak if improperly installed, or explode if recharged, disassembled or heated.
- Sometimes, a build-up of static electric (from carpets, etc) may cause the game to stop working. Just reset the game by switching the power button off for a few seconds and it will work again.



- The unit may malfunction when there is radio interference on the power line and signal line. The unit will revert to normal operation when the interference stops.
- In an environment with radio frequency interference, the product may malfunction and require user to reset the product.

MAINTENANCE

- Handle this device carefully.
- Store this device away from dusty or dirty areas.
- Keep this device away from moisture or extreme temperature.
- Do not disassemble this device. If a problem occurs, switching the power button off for a few seconds, or remove and replace the batteries to reset the device, or try new batteries. If problems persist, consult the warranty information located at the end of this instruction manual.
- Use only the recommended battery type.
- Do not mix old and new batteries.
- Do not mix alkaline, standard (carbon-zinc) or rechargeable (nickel-cadmium) batteries.
- Do not use rechargeable batteries.
- Do not attempt to recharge non-rechargeable batteries.
- Remove any exhausted batteries from the device.
- Do not short-circuit the supply terminals.
- Insert batteries with the correct polarity.
- This product is not suitable for children under 36 months.
- Use only with the recommended transformer type.
- Disconnect the transformer before cleaning the console or controller.
- The transformer is not a toy.



- Transformers used with the toy are to be regularly examined for damage to the cord, plug, enclosure and other parts. In the event of such damage, the toy must not be used with this transformer until the damage has been repaired.
- The toy is not to be connected to more than one power supply.
- Packaging should be kept as it contains important information.

Please retain this for future reference.

This device complies with Part 15 of the FCC Rules. Operation is subject to the following two conditions: (1) this device may not cause harmful interference and (2) this device must accept any interference received, including interference that may cause undesired operation.

WARNING: Changes or modifications to this unit not expressly approved by the party responsible for compliance could void the user's authority to operate the equipment.

NOTE: This equipment has been tested and found to comply with the limits for a Class B digital device, pursuant to Part 15 of the FCC Rules. These limits are designed to provide reasonable protection against harmful interference in a residential installation. This equipment generates, uses and can radiate radio frequency energy and if not installed and used in accordance with the instructions, may cause harmful interference to radio communications. However, there is no guarantee that interference will not occur in a particular installation. If this equipment does cause harmful interference to radio or television reception, which can be determined by turning the equipment off and on, the user is encouraged to try to correct the interference by one or more of the following measures:

- Reorient or relocate the receiving antenna.
- Increase the separation between the equipment and receiver.
- Connect the equipment into an outlet on a circuit different from that to which the receiver is connected.
- Consult the dealer or an experienced radio TV technician for help.



90-DAY LIMITED WARRANTY

(THIS PRODUCT WARRANTY IS VALID IN THE UNITED STATES AND CANADA ONLY)

Radica Games Limited warrants this product for a period of 90 days from the original purchase date under normal use against defective workmanship and materials (batteries excluded). This warranty does not cover damage resulting from accident, unreasonable use, negligence, improper service or other causes not arising out of defects in material or workmanship. Radica Games Limited will not be liable for any costs incurred due to loss of use of this product or other incidental or consequential costs, expenses or damages incurred by the purchaser. Some states do not allow the exclusion or limitation of incidental or consequential damages, so the above limitations may not apply to you. This warranty gives you specific legal rights and you may also have other legal rights, which vary from state to state.

During this 90-day warranty period, the game will either be repaired or replaced (at our option) without charge to the purchaser when returned prepaid with proof of date of purchase to: Radica USA, Ltd., 13628-A Beta Road, Dallas, Texas 75244, USA. Please remove the batteries and wrap the unit carefully before shipping. Please include a brief description of the problem along with your return address and mail it postage prepaid.

IMPORTANT: Before returning the unit for repair, test it with fresh alkaline batteries. Even new batteries may be defective or weak and low battery power is a frequent cause of unsatisfactory operation.

Distributed by:
RADICA USA Ltd.
13628-A Beta Road
Dallas, TX 75244-4510



RADICA®
GIRL TECH®
GIRL TECH, TECH GIRL AND DIGI MAKEOVER
ARE EITHER REGISTERED TRADEMARKS OR
TRADEMARKS OF RADICA GAMES LTD.
©2006 RADICA GAMES LTD.
PRODUCT SHAPE™
ALL RIGHTS RESERVED

visit us at www.girltech.com

