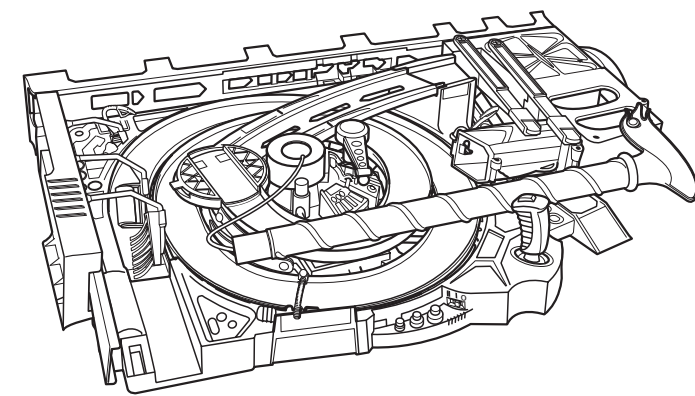


**SPIN CITY™**

Keep these instructions for future reference as they contain important information.



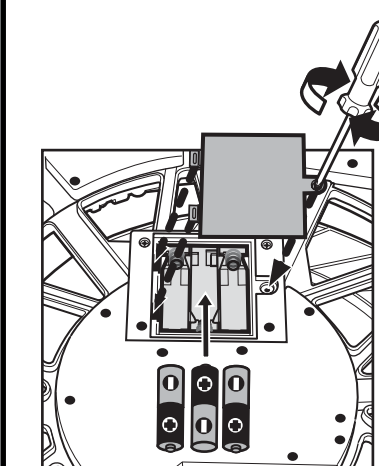
3 X "AA"

5+



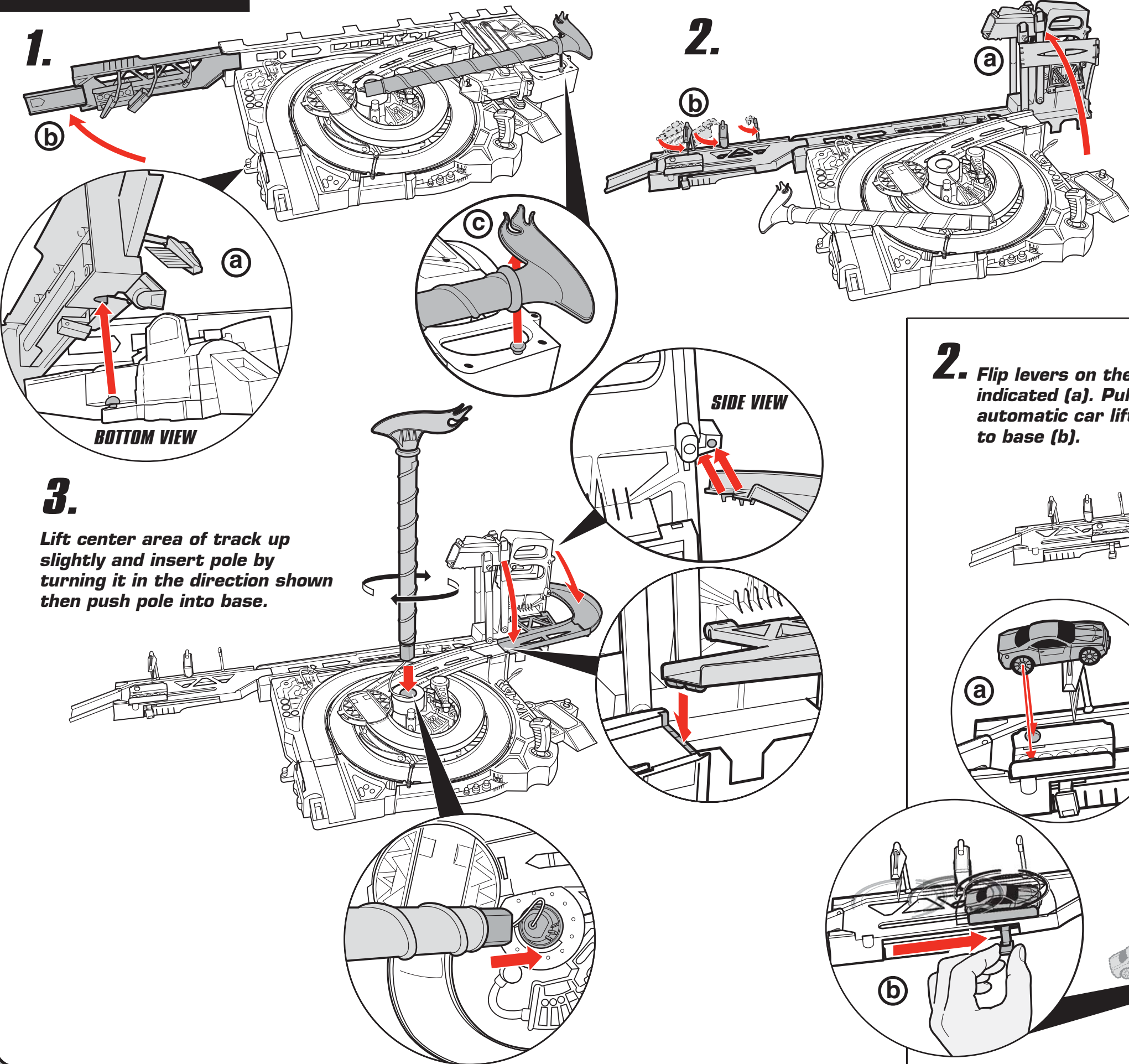
Requires 3 "AA" alkaline batteries (not included). Batteries included are for demonstration purposes only.

**BATTERY INSTALLATION / REPLACEMENT**



Open the battery cover with a Phillips head screwdriver (not included). Remove batteries included for demonstration purposes only and dispose of them safely. Insert 3 new "AA" alkaline batteries in the orientation shown. Replace the battery cover and tighten screw. For best performance use only alkaline batteries. Change the batteries if the product does not function properly or if the sounds are garbled or play slowly. Dispose of batteries safely.

**OPEN YOUR SET**



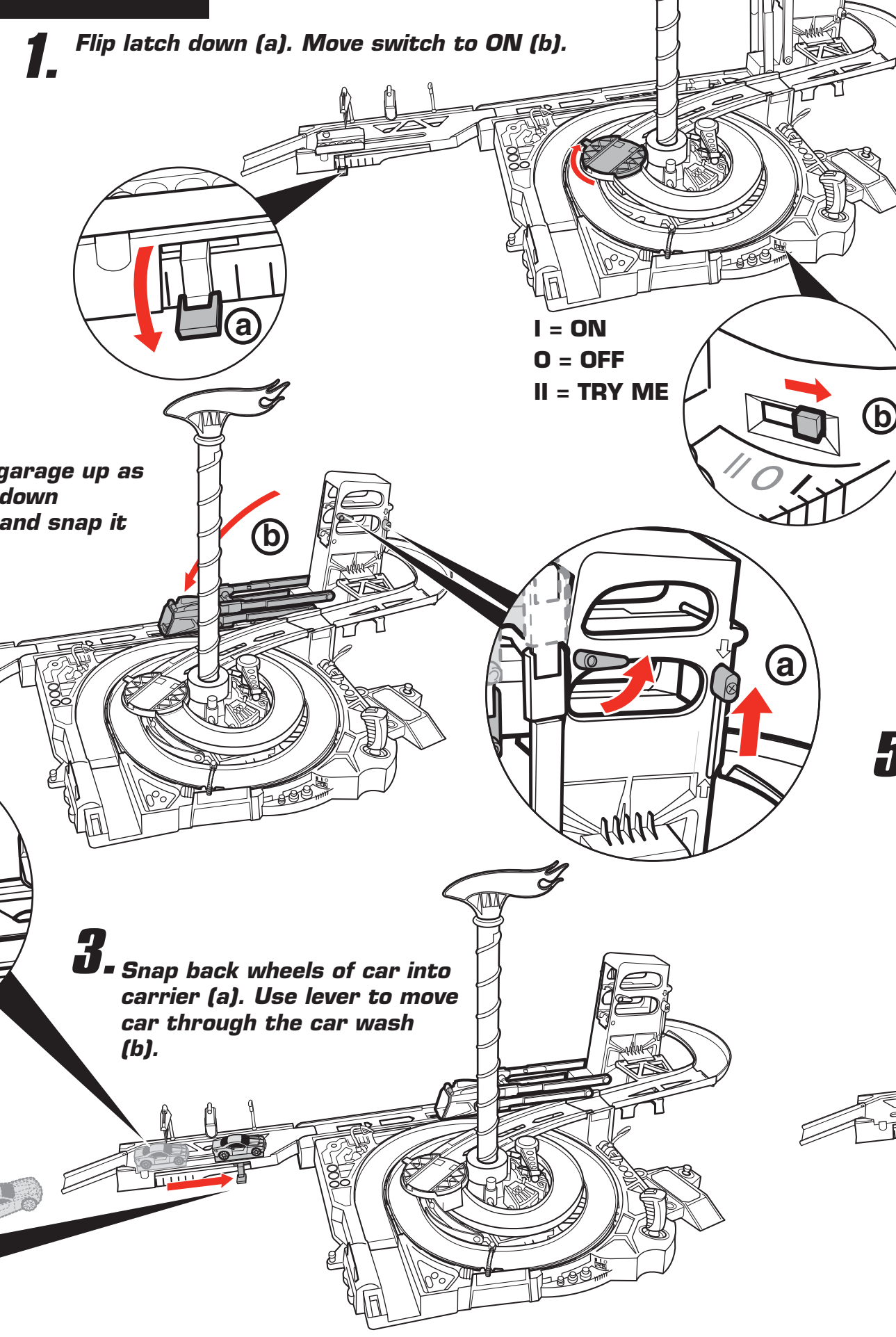
1.

2.

3.

Lift center area of track up slightly and insert pole by turning it in the direction shown then push pole into base.

**TO PLAY**

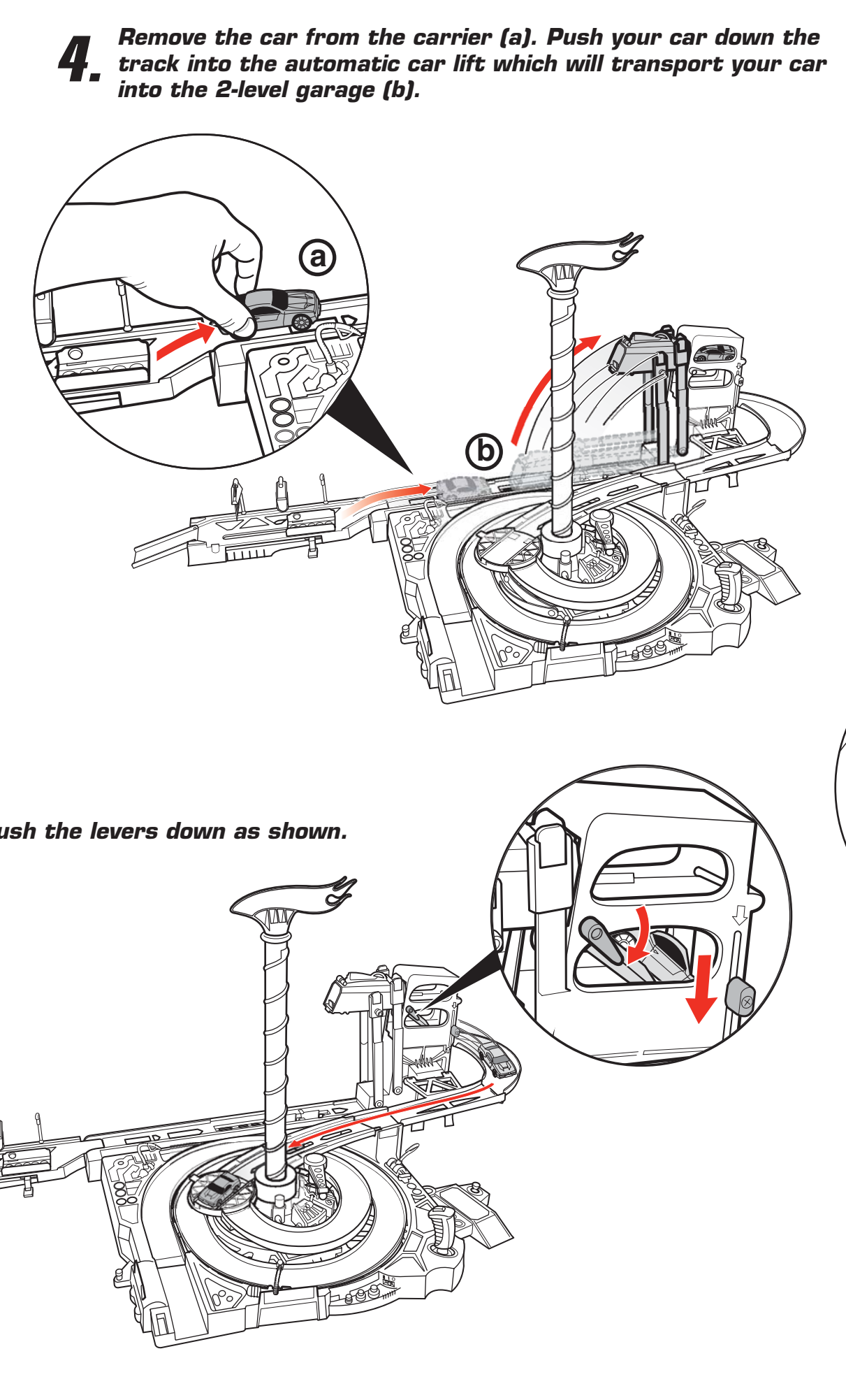


1. Flip latch down (a). Move switch to ON (b).

2. Flip levers on the garage up as indicated (a). Pull down automatic car lift and snap it to base (b).

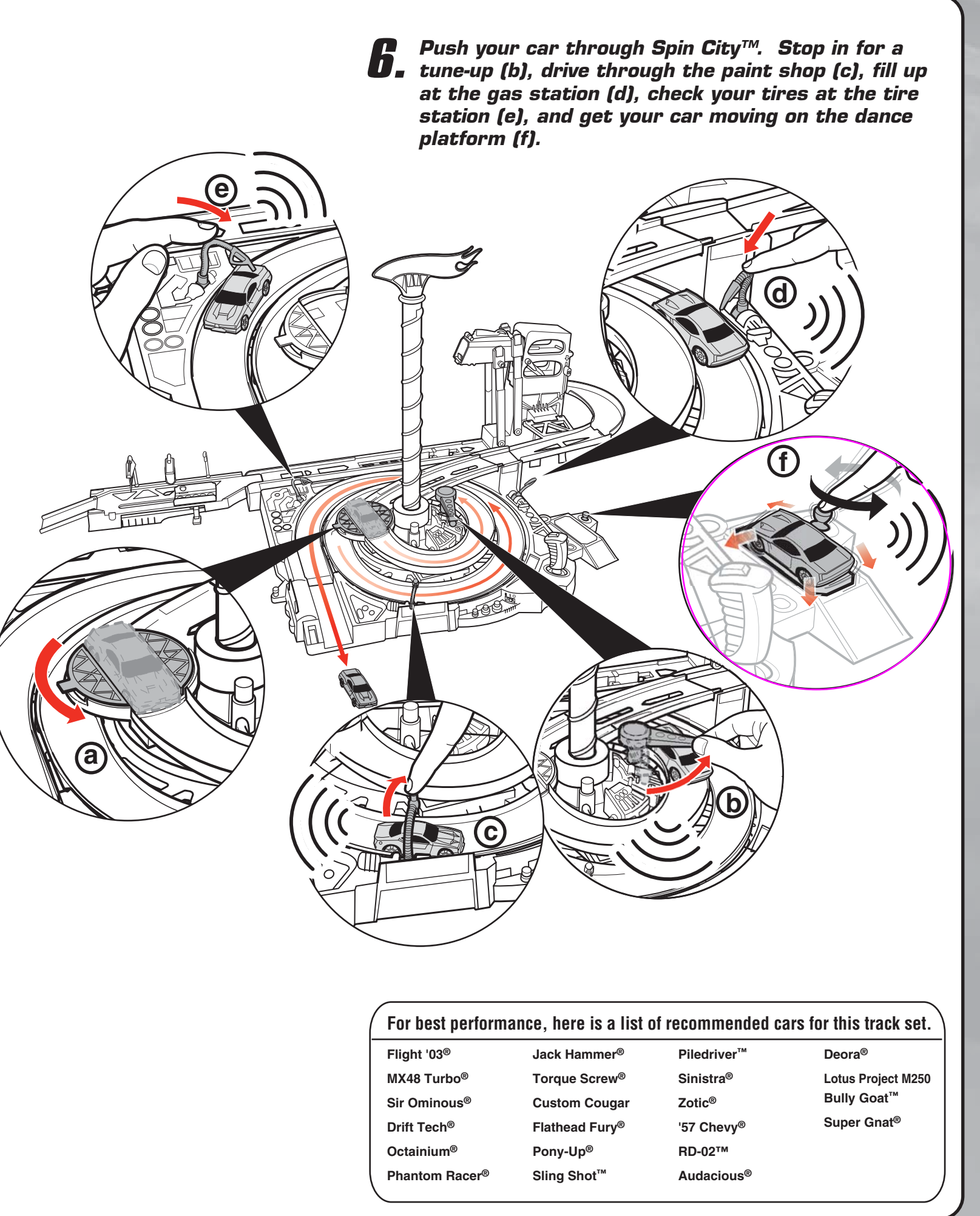
3. Snap back wheels of car into carrier (a). Use lever to move car through the car wash (b).

I = ON  
O = OFF  
II = TRY ME



4. Remove the car from the carrier (a). Push your car down the track into the automatic car lift which will transport your car into the 2-level garage (b).

5. Push the levers down as shown.



6. Push your car through Spin City™. Stop in for a tune-up (b), drive through the paint shop (c), fill up at the gas station (d), check your tires at the tire station (e), and get your car moving on the dance platform (f).

For best performance, here is a list of recommended cars for this track set.

Flight '03®	Jack Hammer®	Piledriver™	Deora®
MX48 Turbo®	Torque Screw®	Sinistra®	Lotus Project M250
Sir Ominous®	Custom Cougar	Zotic®	Bully Goat™
Drift Tech®	Flathead Fury®	'57 Chevy®	Super Gnat®
Octanium®	Pony-Up®	RD-02™	
Phantom Race®	Sling Shot™	Audacious®	

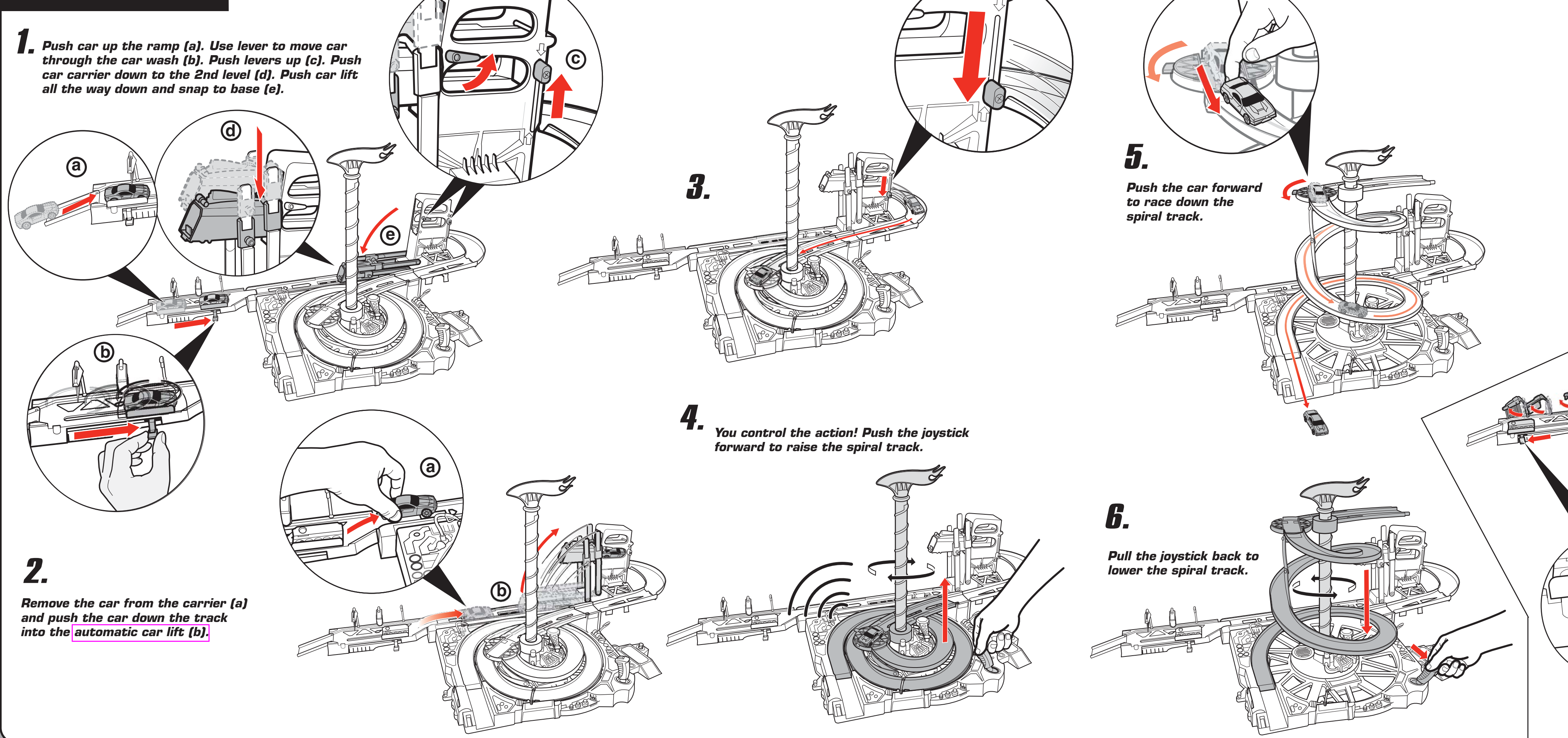
INSTRUCTION SHEET SPECIFICATIONS

Toy No.	K4328
Part No.	092001
Year Size	38.5" W x 11" H
Product Size	5.5" W x 11" H
Type of File	See Directory
# colors	Two
Colors	PMS 485C + Black
Paper Stock	White Offset
Paper Weight	70 lb.
ETM No.	004

Folding Summary

A.	1 2 3 4 5 6 7						
B.	8 9 10 11 12 13 14						

**MORE WAYS TO PLAY**



1. Push car up the ramp (a). Use lever to move car through the car wash (b). Push levers up (c). Push car carrier down to the 2nd level (d). Push car lift all the way down and snap to base (e).

2. Remove the car from the carrier (a) and push the car down the track into the automatic car lift (b).

3.

4. You control the action! Push the joystick forward to raise the spiral track.

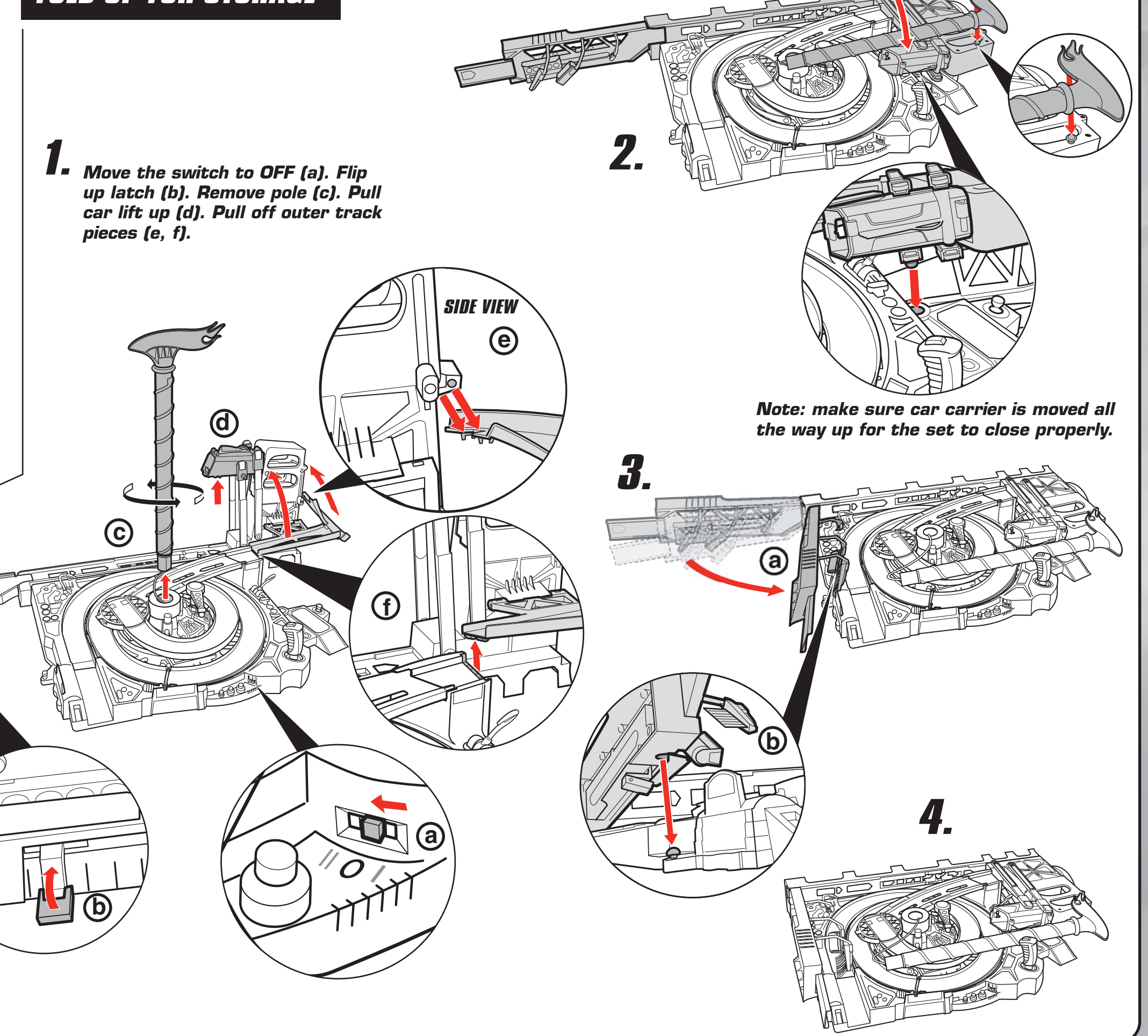
5.

Push the car forward to race down the spiral track.

6.

Pull the joystick back to lower the spiral track.

**FOLD UP FOR STORAGE**



1. Move the switch to OFF (a). Flip up latch (b). Remove pole (c). Pull car lift up (d). Pull off outer track pieces (e, f).

Note: make sure car carrier is moved all the way up for the set to close properly.

**BATTERY SAFETY INFORMATION**  
In exceptional circumstances batteries may leak fluids that can cause a chemical burn injury or ruin your product. To avoid battery leakage:  
• Non-rechargeable batteries are not to be recharged.  
• Rechargeable batteries are to be removed from the product before being charged (if designed to be removable).  
• Rechargeable batteries are only to be charged under adult supervision (if designed to be removable).  
• Do not mix alkaline, standard (carbon-zinc), or rechargeable (nickel-cadmium) batteries.  
• Do not mix old and new batteries.  
• Only batteries of the same or equivalent type as recommended are to be used.  
• Batteries are to be inserted with the correct polarity.  
• Exhausted batteries are to be removed from the product.  
• The supply terminals are not to be short-circuited.  
• Dispose of batteries safely.  
• Do not dispose of this product in a fire. The batteries inside may explode or leak.  
Protect the environment by not disposing of this product with household waste (2002/96/EC). Check your local authority for recycling advice and facilities.

**For product sold in USA**  
Operation is subject to the following two conditions:  
(1) This device may not cause harmful interference, and (2) this device must accept any interference received, including interference that may cause undesired operation of the device.  
This equipment has been tested and found to comply with the limits for a Class B digital device, pursuant to part 15 of the FCC rules. These limits are designed to provide reasonable protection against harmful interference in a residential installation. This equipment generates, uses and can radiate radio frequency energy and, if not installed and used in accordance with the instructions, may cause harmful interference to radio communications. However, there is no guarantee that interference will not occur in a particular installation. If this equipment does cause harmful interference to radio or television reception, which can be determined by turning the equipment off and on, the user is encouraged to try to correct the interference by one or more of the following measures:  
• Reorient or relocate the receiving antenna.  
• Increase the separation between the equipment and receiver.  
• Connect the equipment into an outlet on a circuit different from that to which the receiver is connected.  
Consult the dealer or an experienced radio/TV technician for help.  
Mattel, Inc.  
Consumer Relations  
636 Girard Ave.  
East Aurora, NY  
(800) 524-8697

**For product sold in Canada • Pour les produits vendus au Canada**  
THIS CLASS B DIGITAL APPARATUS COMPLIES WITH CANADIAN ICES-003. CET APPAREIL NUMÉRIQUE DE LA CLASSE B EST CONFORME À LA NORME NMB-003 DU CANADA.  
(VALID FOR CANADA ONLY • VALABLE AU CANADA SEULEMENT)

Operation is subject to the following two conditions:  
(1) This device may not cause interference, and (2) this device must accept any interference, including interference that may cause undesired operation of the device.  
L'utilisation de ce dispositif est autorisée seulement aux conditions suivantes:  
(1) Il ne doit pas produire de brouillage et (2) il doit pouvoir tolérer tout brouillage radioélectrique reçu, même si ce brouillage est susceptible de compromettre son fonctionnement.