



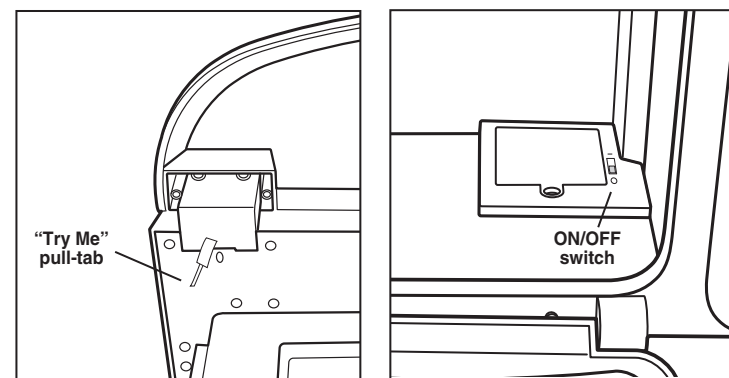
# Elmo's Restaurant

## INSTRUCTIONS

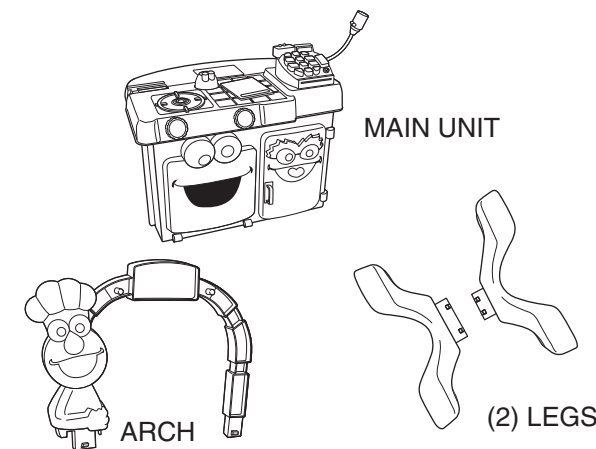
Please keep these instructions for future reference as they contain important information.

### Before You Begin

- Remove and discard the "Try Me" pull-tab, located on the underside of the MAIN UNIT, as shown. Once the pull tab is removed, the toy will perform its full play pattern as described below.
- Be sure the ON/OFF switch is in the ON position. The ON/OFF switch is located next to the battery compartment on the inside of the oven, as shown.



### What's Included?



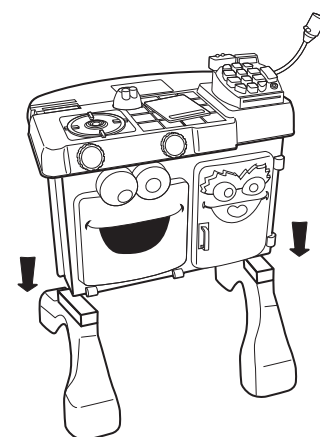
#### The following play pieces (not pictured)

- 1 Fork
- 1 Spoon
- 1 Plate
- 1 Cup
- 1 Spatula
- 1 Frying Pan
- 1 Menu
- 1 Egg
- 1 Milk Carton
- 1 Oatmeal Raisin Cookie
- 1 Broccoli Bunch
- 1 Slice of Pizza
- 1 Peanut Butter & Jelly Sandwich
- 1 Top of Bun
- 1 Bottom Bun
- 1 Hamburger Patty with Cheese
- 3 Cookie Monster Money Bills
- 3 Elmo Dorothy Dollars Bills
- 3 Ernie Duck Bills
- 3 Oscar Trash Cash Bills

### How To Assemble

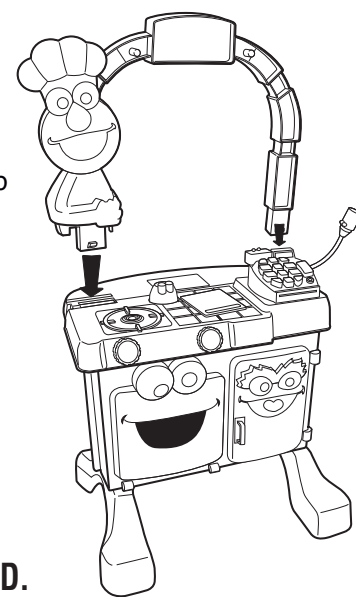
**NOTE: All of the following assemblies are "one-time snaps". Once these pieces are snapped together, they cannot be taken apart.**

**STEP 1**  
Snap the 2 LEGS into the bottom of the MAIN UNIT.



**Note: There is a right and a left leg – they should not be reversed.**

**STEP 2**  
Snap the ARCH into the top of the MAIN UNIT.  
Make sure Elmo is facing front, to the left.  
Make sure it properly snaps in two places.



**ADULT ASSEMBLY REQUIRED.**

**FRONT**

### How To Play

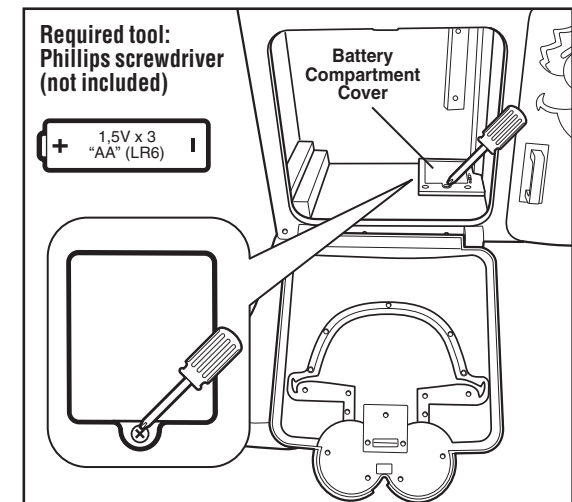
- Cash register will make sounds and phrases when the buttons are pressed and the drawer is opened.
- Press the button on the microphone and speak into it – it really works!
- Burner makes sizzling sounds when pan is placed on it.
- Elmo will talk when the spatula is taken out of his hand or placed back.
- The Grover side is for "dining" and Grover will speak when you take the menu out of his hand or replace it.
- Open and close the refrigerator door to hear Oscar phrases.
- Open and close the oven door to hear Cookie Monster phrases.
- Turn the Bert & Ernie knobs to hear them speak.
- Ding the real-working bell for phrases and a song!
- All the play pieces fit inside the storage spaces within the oven and refrigerator.

### Battery Replacement

- Batteries included are for demonstration purposes only.
- Battery compartment is located on the inside of the oven, as shown.
- Unscrew and lift the battery compartment cover.
- Insert 3 "AA" batteries as shown. For longer life use only alkaline batteries.
- Replace the battery compartment cover.

#### BATTERY SAFETY INFORMATION

- In exceptional circumstances batteries may leak fluids that can cause a chemical burn injury or ruin your toy (product). To avoid battery leakage:
- Non-rechargeable batteries are not to be recharged.
  - Rechargeable batteries are to be removed from the product before being charged (if designed to be removable).
  - Rechargeable batteries are only to be charged under adult supervision (if designed to be removable).
  - Do not mix alkaline, standard (carbon-zinc), or rechargeable (nickel-cadmium) batteries.
  - Do not mix old and new batteries.
  - Only batteries of the same or equivalent type as recommended are to be used.
  - Batteries are to be inserted with the correct polarity.
  - Exhausted batteries are to be removed from the product.
  - The supply terminals are not to be short-circuited.
  - Dispose of battery(ies) safely.
  - Do not dispose of this product in a fire. The batteries inside may explode or leak.



This equipment has been tested and found to comply with the limits for a Class B digital device, pursuant to part 15 of the FCC rules. These limits are designed to provide reasonable protection against harmful interference in a residential installation. This equipment generates, uses and can radiate radio frequency energy and, if not installed and used in accordance with the instructions, may cause harmful interference to radio communications. However, there is no guarantee that interference will not occur in a particular installation. If this equipment does cause harmful interference to radio or television reception, which can be determined by turning the equipment off and on, the user is encouraged to try to correct the interference by one or more of the following measures:

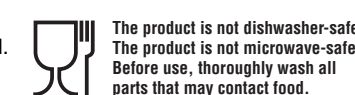
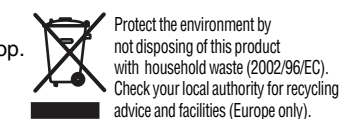
- Reorient or relocate the receiving antenna.
  - Increase the separation between the equipment and receiver.
  - Connect the equipment into an outlet on a circuit different from that to which the receiver is connected.
  - Consult the dealer or an experienced radio/TV technician for help.
- Mattel Inc. 333 Continental Blvd. El Segundo, CA (310) 252-2400  
NOTE: Changes or modifications not expressly approved by the manufacturer responsible for compliance could void the user's authority to operate the equipment.  
This device complies with part 15 of the FCC Rules. Operation is subject to the following two conditions:  
(1) This device may not cause harmful interference, and  
(2) this device must accept any interference received, including interference that may cause undesired operation.

Sesame Workshop®, Sesame Street® and associated characters, trademarks and design elements are owned and licensed by Sesame Workshop. ©2008 Sesame Workshop. All Rights Reserved.

Fisher-Price, Inc., a subsidiary of Mattel, Inc., East Aurora, NY 14052 U.S.A.  
**PRINTED IN CHINA.**

Manufactured for Fisher-Price. ©2008 Mattel, Inc. All Rights Reserved. ® and ™ designate U.S. trademarks of Mattel, Inc., unless otherwise indicated.

For countries outside the United States:  
Canada: Mattel Canada Inc., 6155 Freemont Blvd., Mississauga, Ontario L5R 3W2; www.service.mattel.com.  
Great Britain: Mattel U.K. Ltd., Vanwall Business Park, Maidenhead SL6 4UB. Helpline 01628 500303. www.service.mattel.com/uk  
Australia: Mattel Australia Pty. Ltd., 658 Church Street, Locked Bag #870, Richmond, Victoria. 3121 Australia. Consumer Advisory Service - 1300 135 312.  
New Zealand: 16-18 William Pickering Drive, Albany 1331, Auckland.  
Asia: Mattel East Asia Ltd., Room 1106, South Tower, World Finance Centre, Harbour City, Tsimshatsui, HK, China.



Item No : L9040-0920  
Version : English  
Size : A4  
Paper : Woodfree paper 80 gsm  
Color : Black  
Date : 02/29/2008

**BACK**