

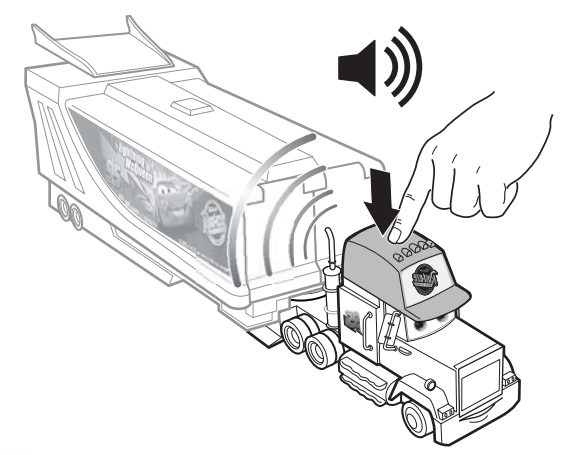
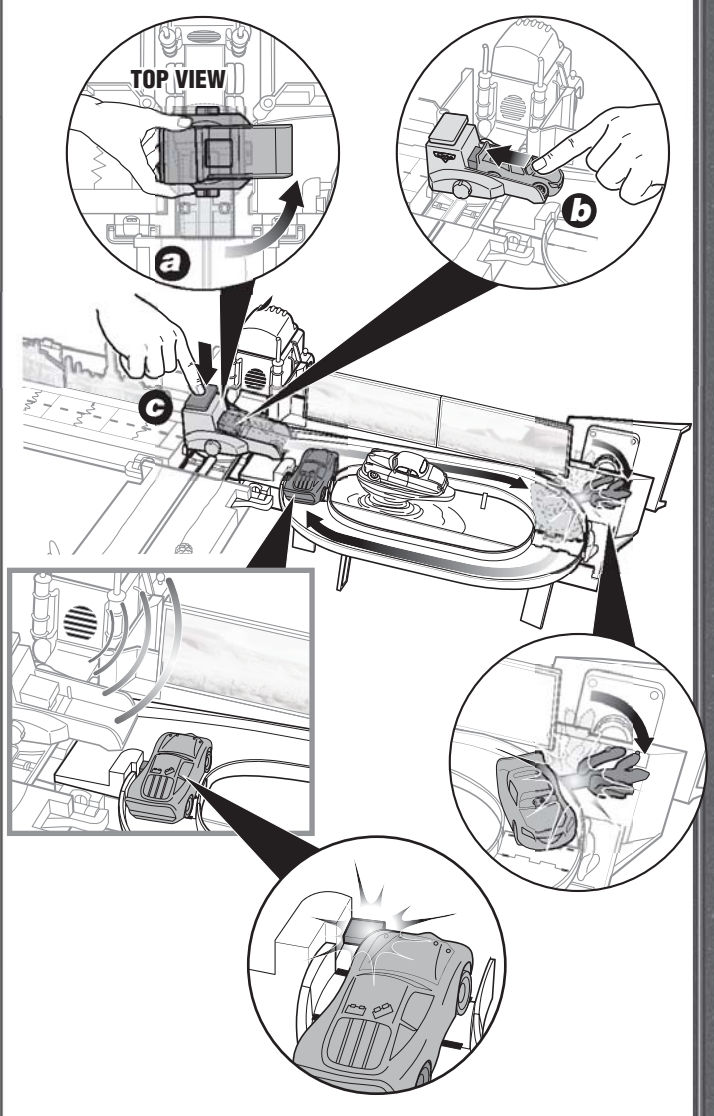
This is a battery-operated product. 1 flyer (00007-184966) is required to be placed inside the packaging.

This is a battery-operated product. 1 flyer (00001-1373G1) is required to be placed inside the packaging.

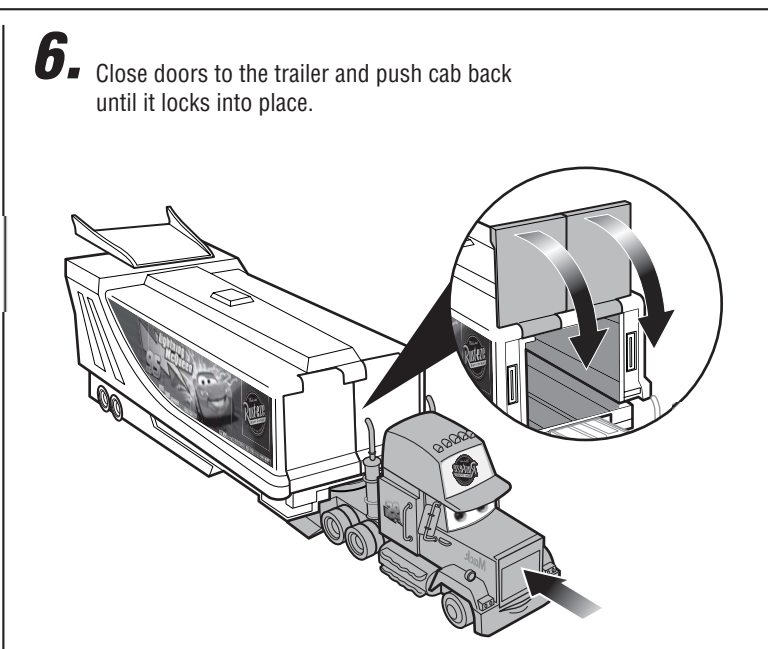
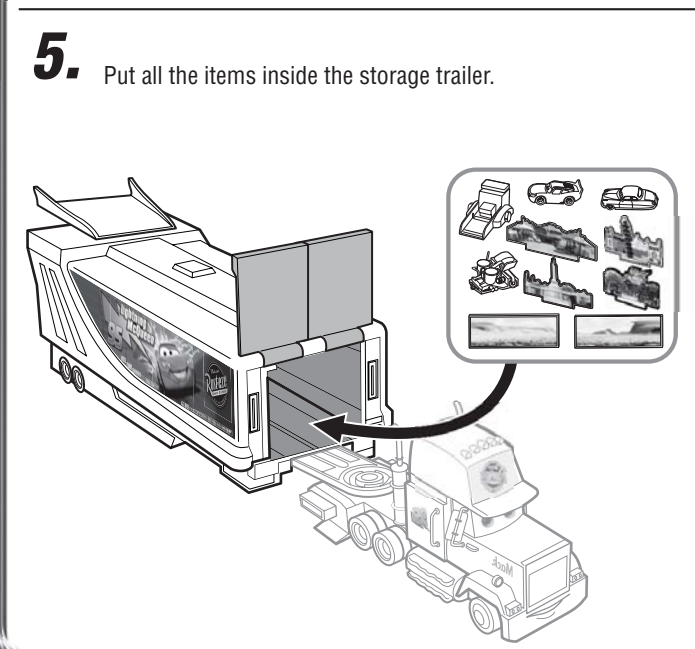
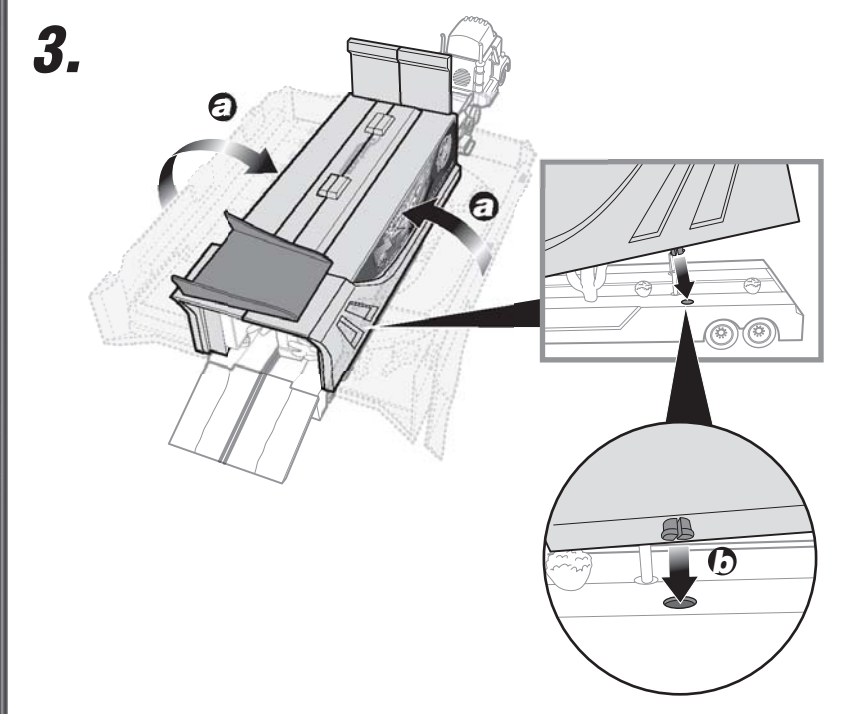
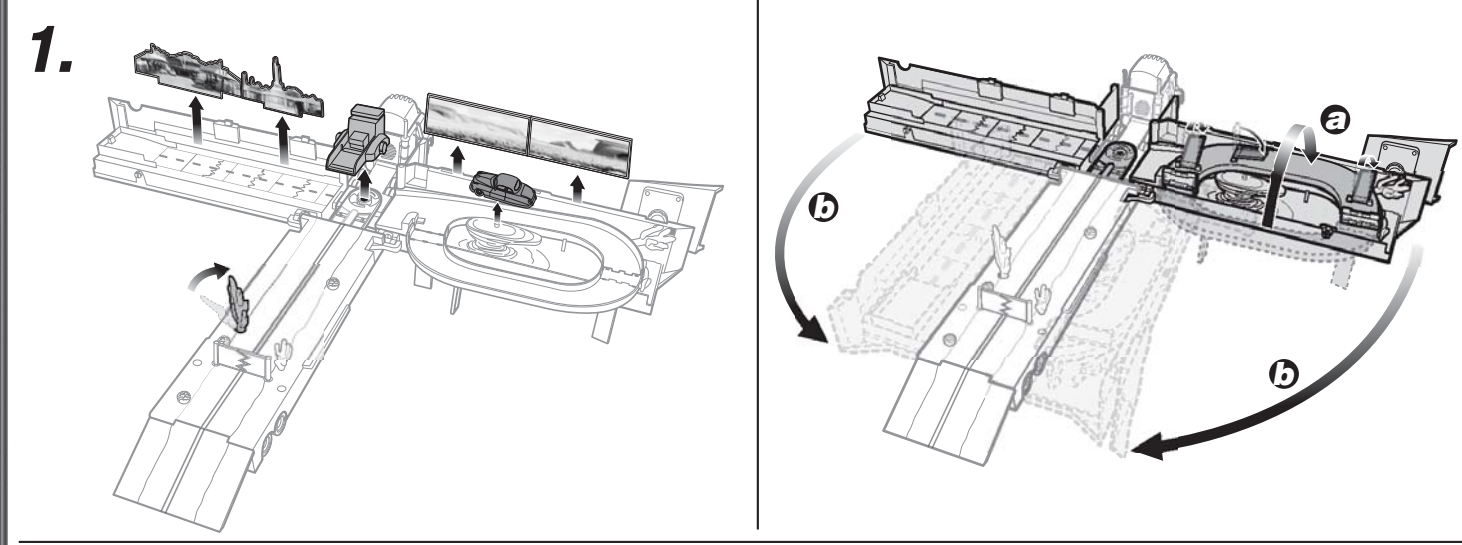
To Play 3

DRIFT WITH DOC HUDSON!

Swivel the launcher (A). Load Lightning McQueen (B). Press the button (C) to launch Lightning McQueen around the dirt track.



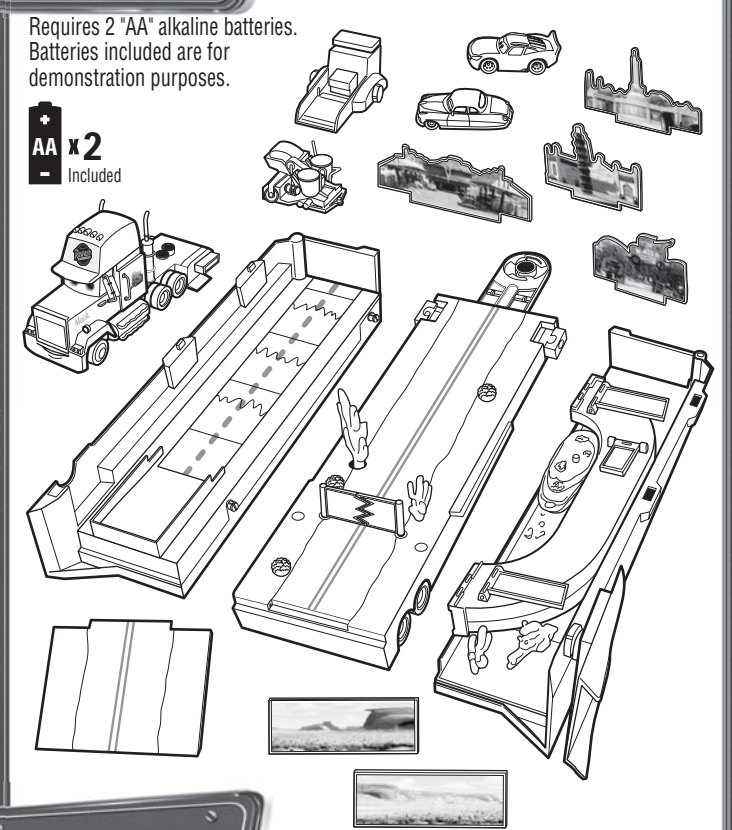
Storage



Mega Mack Playtown® Instructions

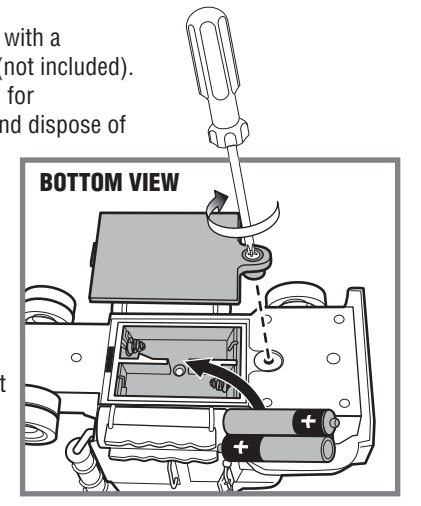
Contents

Please keep these instructions for future reference as they contain important information.



Battery Installation

- Unscrew the battery cover with a Phillips-head screwdriver (not included).
- Remove batteries included for demonstration purposes and dispose of them safely.
- Insert 2 new "AA" alkaline batteries (not included) in the orientation shown.
- Replace the battery cover and tighten screw.
- Replace batteries if sound is distorted or if movement slows.
- For best performance, use only alkaline batteries.



INSTRUCTION SHEET SPECIFICATIONS

Toy:	Lightning McQueen
Toy No.:	M8120
Part No.:	0920
Trim Size:	16.5"W x 11.25"H
Folded Size:	5.625"W x 8.25"H
Type of Fold:	
# colors:	One
Colors:	Black
Paper Stock:	White Offset
Paper Weight:	70 lb.
EDM No.:	

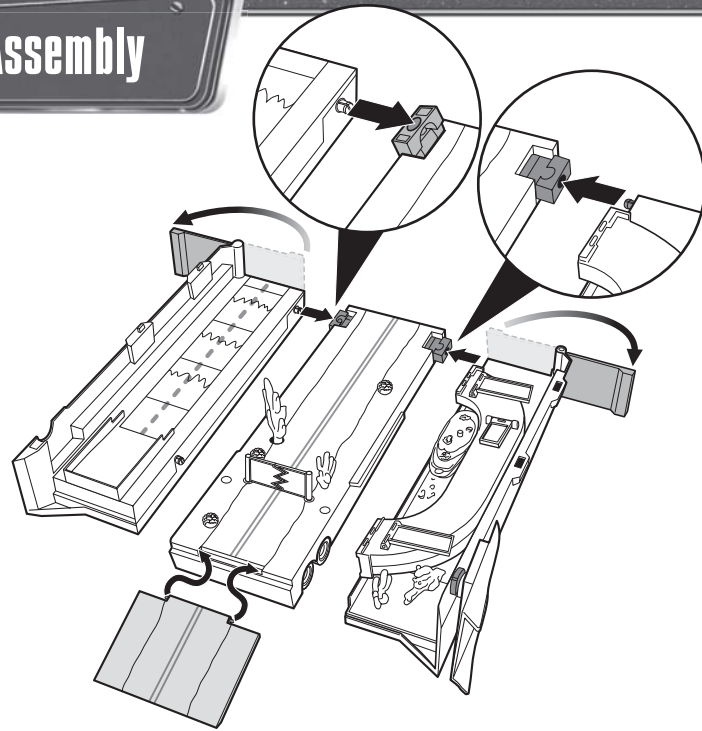
Mattel, Inc., 333 Continental Blvd., El Segundo, CA 90245 U.S.A. Consumer Relations 1 (800) 524-8697. Mattel U.K. Ltd., Vanwall Business Park, Maidenhead SL6 4UB. Mattel Australia Pty., Ltd., Richmond, Victoria, 3121 Consumer Advisory Service - 1300 135 312. Mattel East Asia Ltd., Room 1106, South Tower, World Finance Centre, Harbour City, Tsimshatsui, HK, China. Diimport & Diedarkan Oleh: Mattel SEA Ptd Ltd. (993532-P) Lot 13.5, 13th Floor, Menara Lien Hoe, Persiaran Tropicana Golf Country Resort, 47410 PJ. Tel:03-78803817, Fax:03-78803867.

service.mattel.com
 Hudson Hornet is a trademark of DaimlerChrysler Corporation.
 Mack is a registered trademark of Mack Trucks, Inc.
 © Disney/Pixar
 CHRYSLER LICENSED PRODUCT

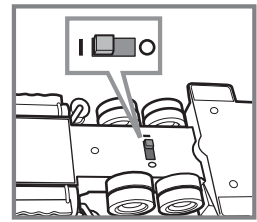
This is a battery-operated product.
1 flyer (M8120-0921) is required
to be placed inside the packaging.

Assembly

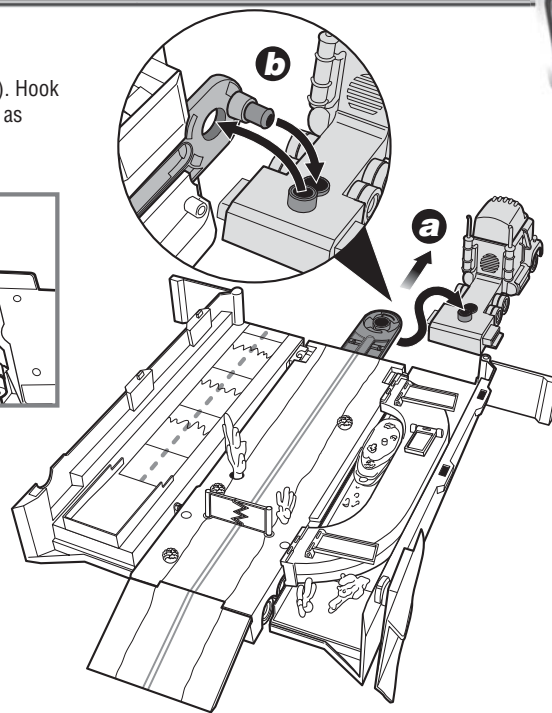
1.



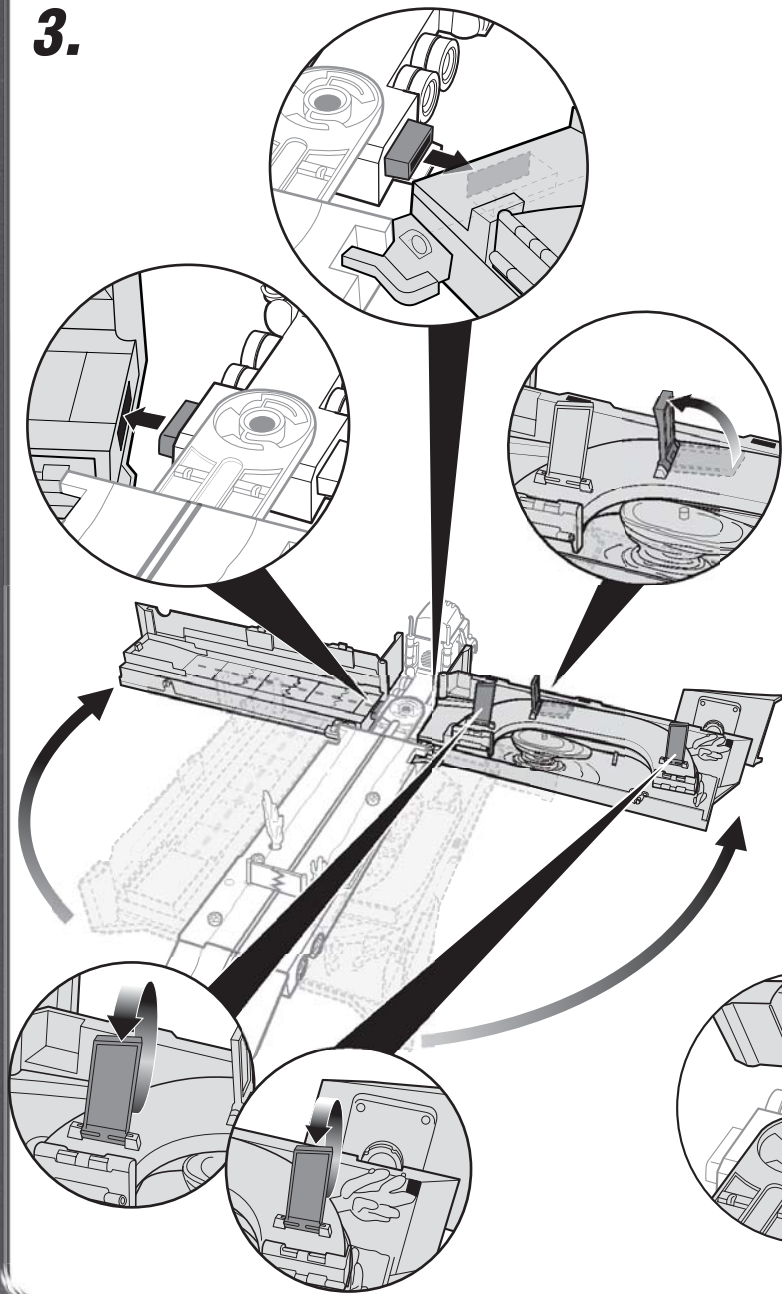
2. Pull out hitch (A). Hook trailer to the cab as shown (B).



I = ON O = OFF

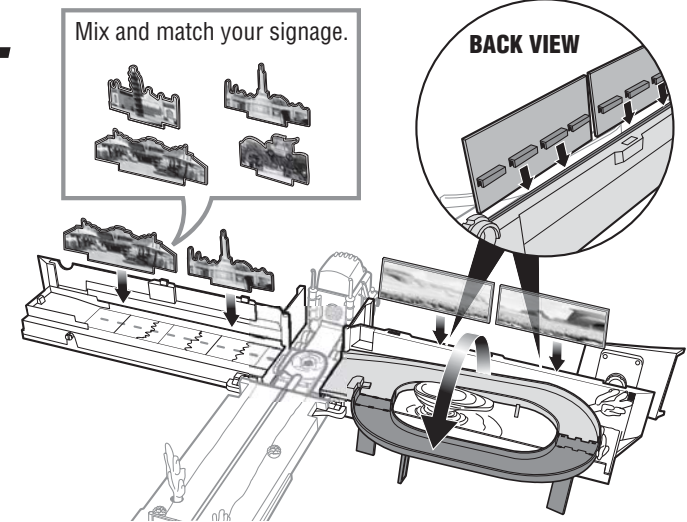


3.

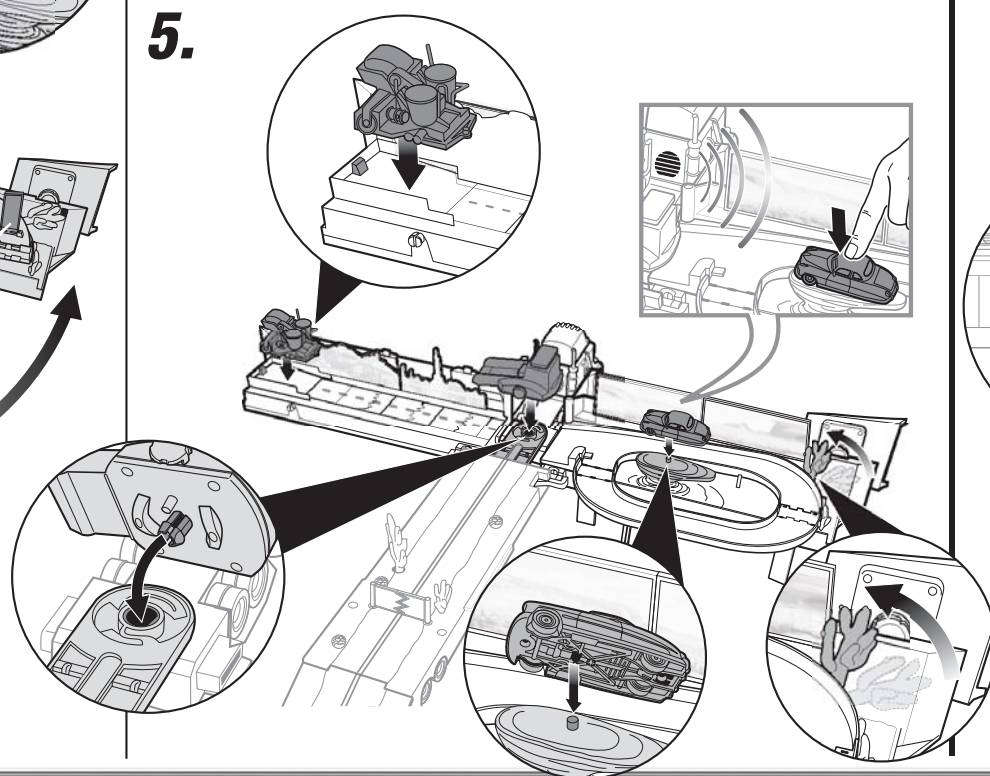


4.

Mix and match your signage.



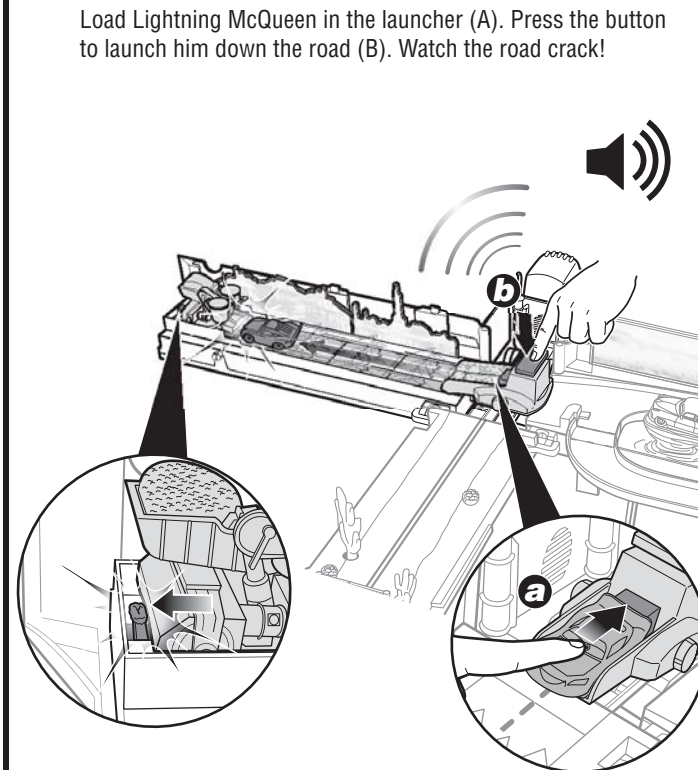
5.



To Play 1

1. FIX THE ROAD WITH BESSIE!

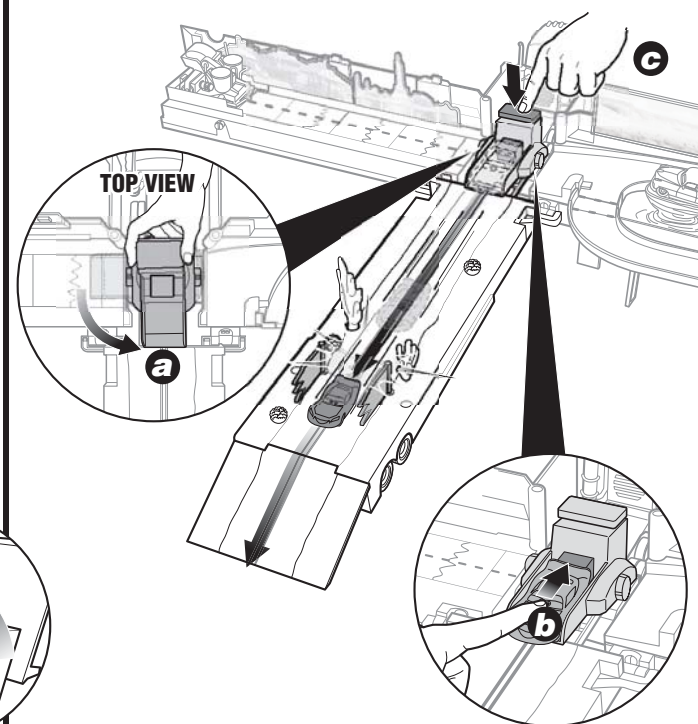
Load Lightning McQueen in the launcher (A). Press the button to launch him down the road (B). Watch the road crack!



To Play 2

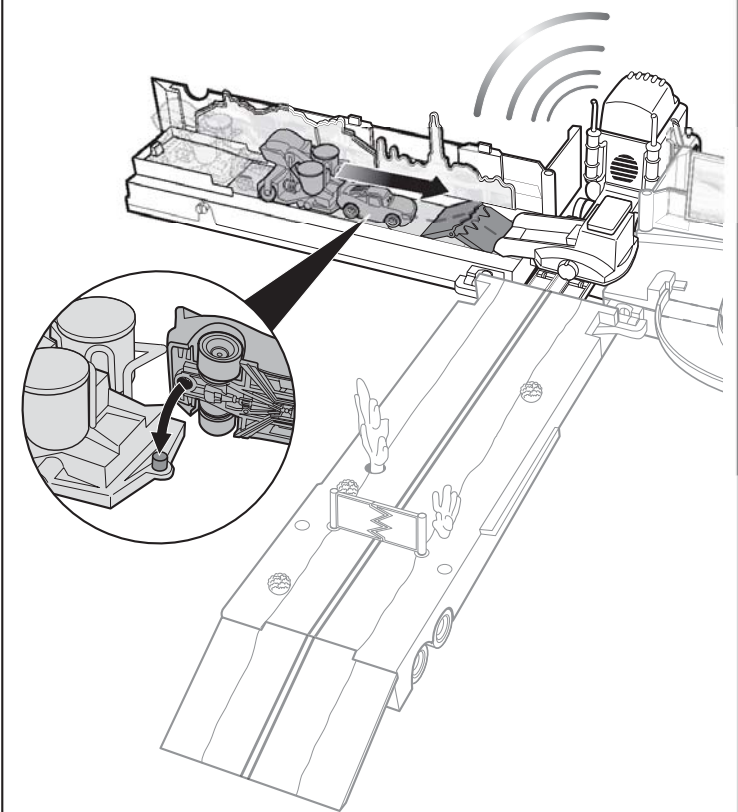
RACE WITH LIGHTNING McQUEEN TO THE PISTON CUP!

1. Swivel the launcher to the middle lane (A). Load Lightning McQueen (B). Press the button (C) to launch Lightning McQueen towards the Piston Cup.



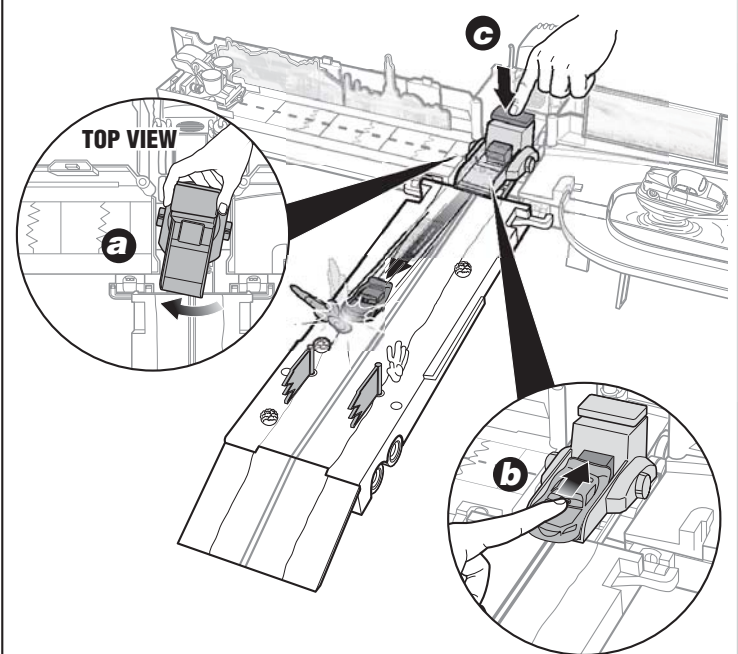
2.

Hitch Lightning McQueen up to Bessie (A). Pull Bessie and watch as Lightning McQueen fixes the road with a little help from Bessie.



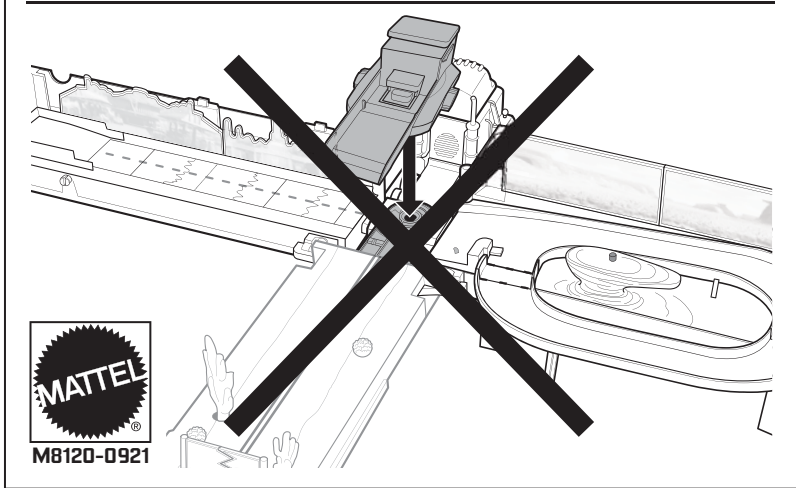
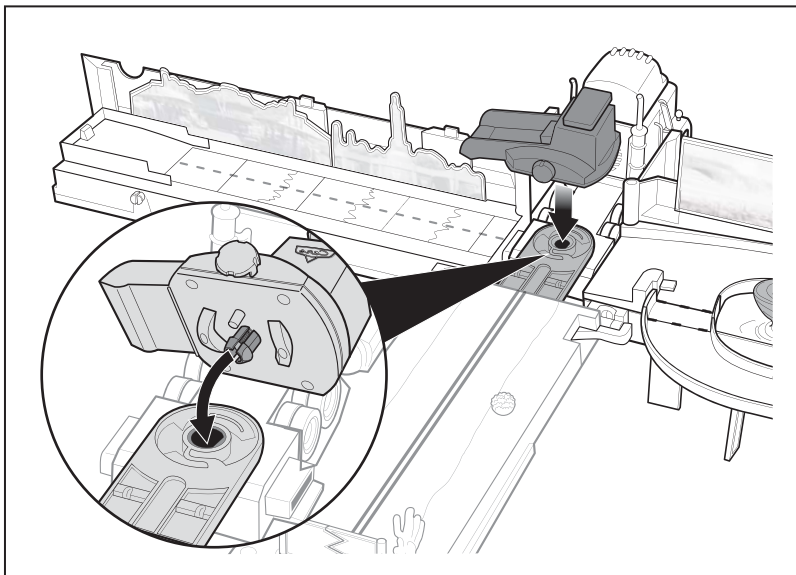
2.

Swivel the launcher (A). Load Lightning McQueen (B) and aim for the collapsing cactus. Press the button (C) and watch him go!



Size: 4.125" X 5.5"

Colour: Black



M8120-0921