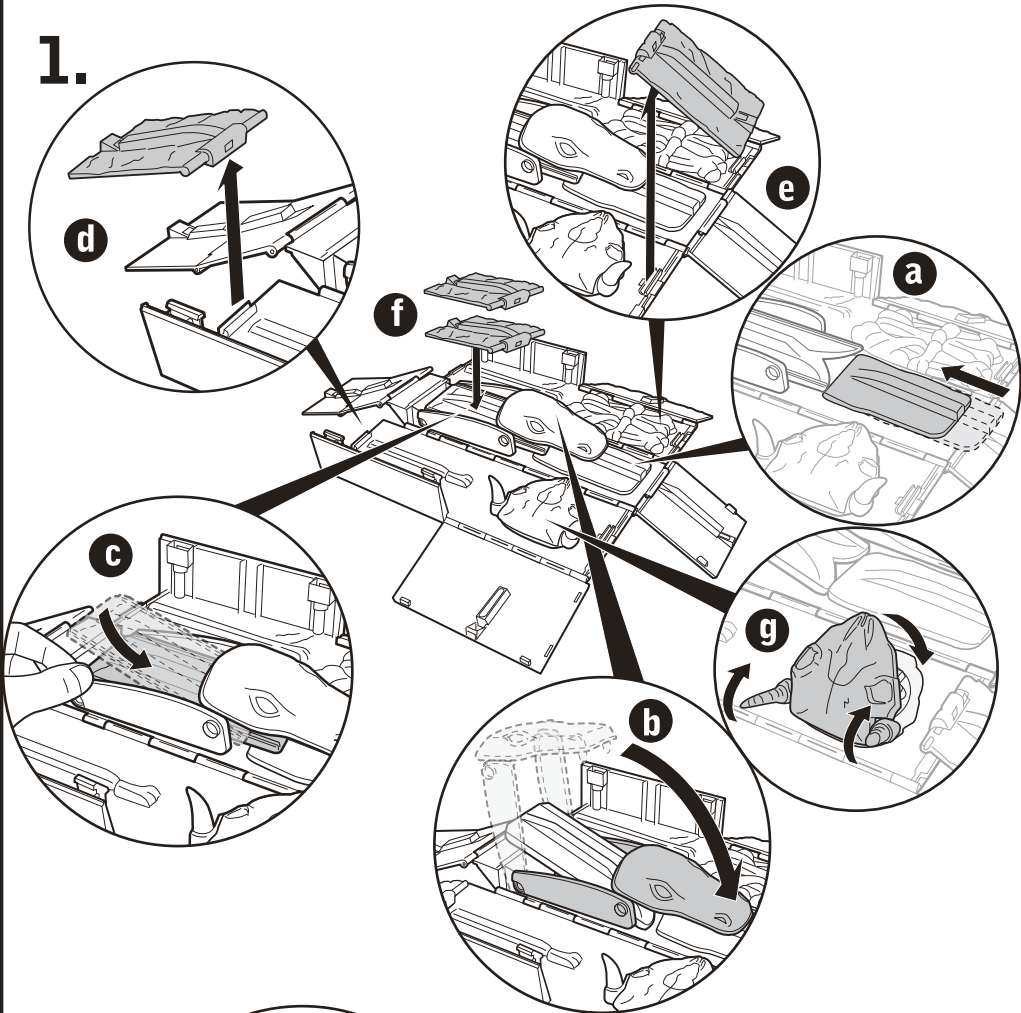
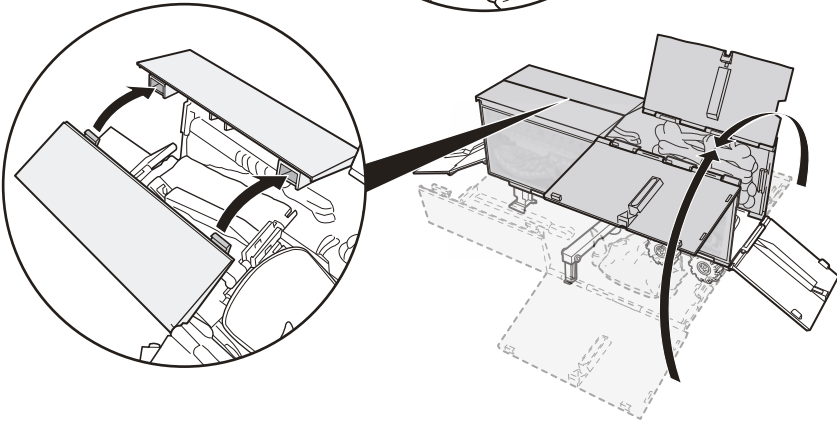


FOLD UP AND GO

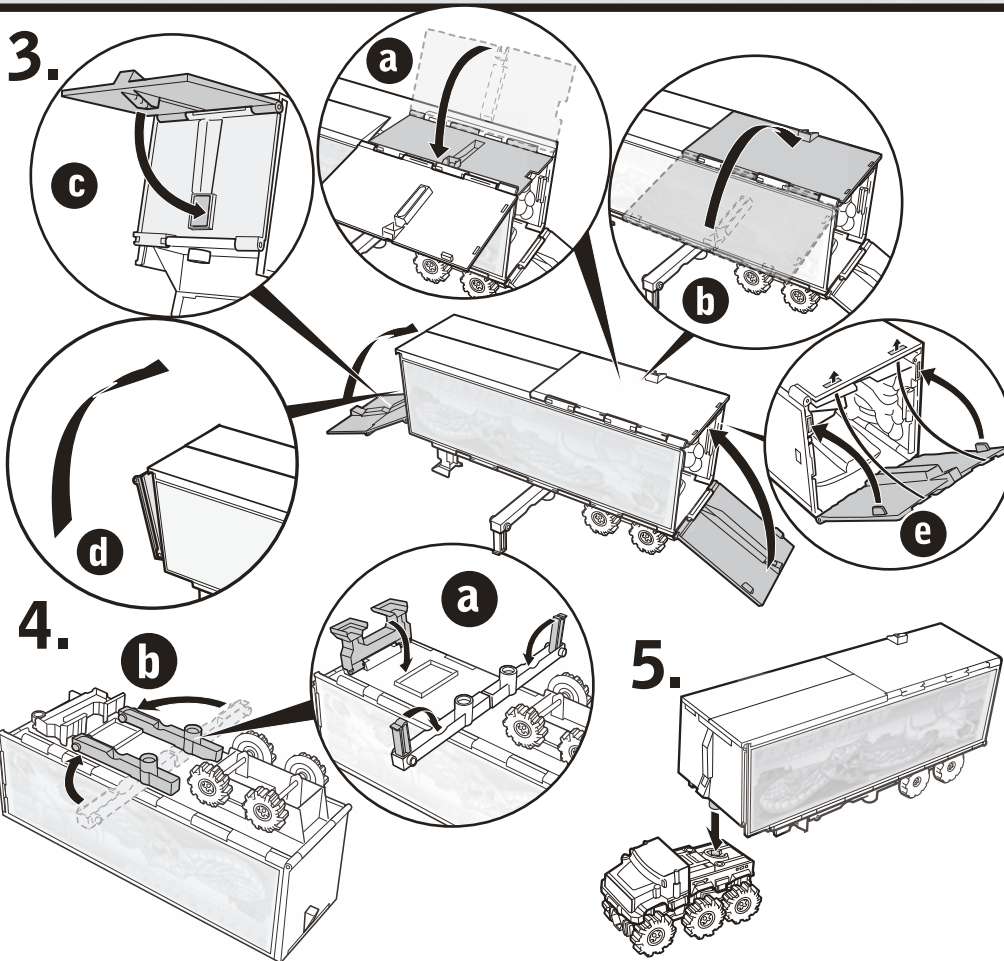
1.



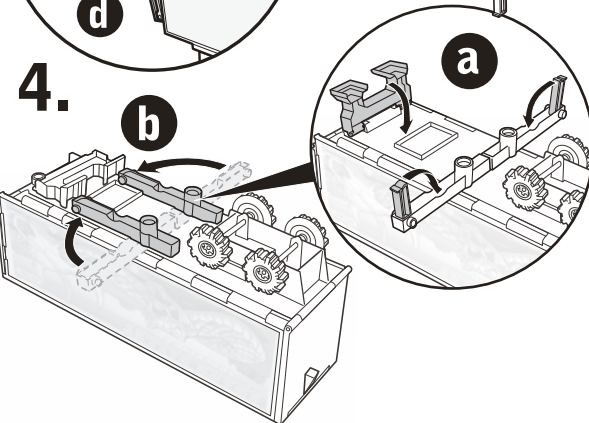
2.



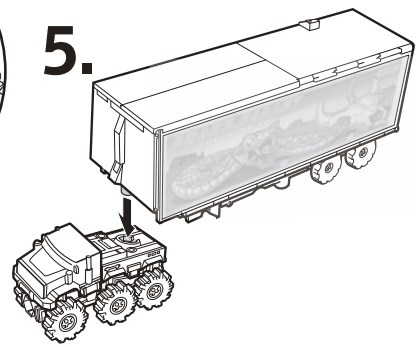
3.



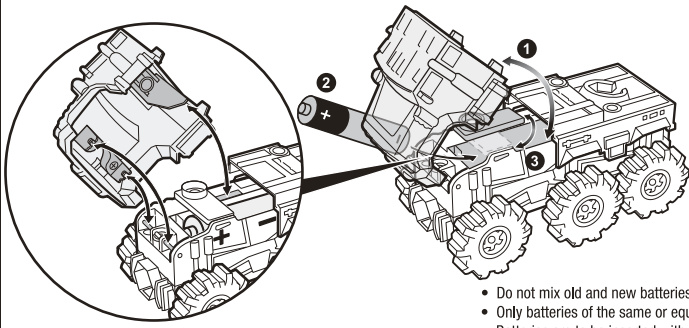
4.



5.



BATTERY INSTALLATION/REPLACEMENT



BATTERY SAFETY INFORMATION
In exceptional circumstances batteries may leak fluids that can cause a chemical burn injury or ruin your product. To avoid battery leakage:

- Non-rechargeable batteries are not to be recharged.
- Rechargeable batteries are to be removed from the product before being charged (if designed to be removable).
- Rechargeable batteries are only to be charged under adult supervision (if designed to be removable).
- Do not mix alkaline, standard (carbon-zinc), or rechargeable (nickel-cadmium) batteries.

- Remove vehicle body from chassis.
- Rotate battery cover as shown.
- Install 1 new "AA" (LR6) alkaline battery in the orientation (+/-) shown.
- Replace and close battery cover and vehicle body.
- Replace the battery if the product does not function properly.



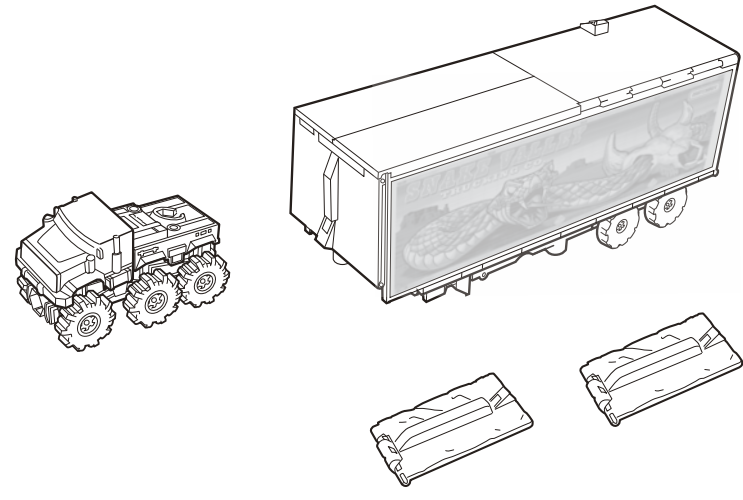
Protect the environment by not disposing of this product with household waste [2002/96/EC]. Check your local authority for recycling advice and facilities.



INSTRUCTIONS

Please keep these instructions for future reference as they contain important information.

CONTENTS



Requires 1 "AA" (LR6) alkaline battery (not included).
NOT FOR USE WITH SOME POWER SCOUTS™ VEHICLES.

READY FOR ACTION

SNAKE VALLEY TRANSPORTER™ PLAYSET

3+

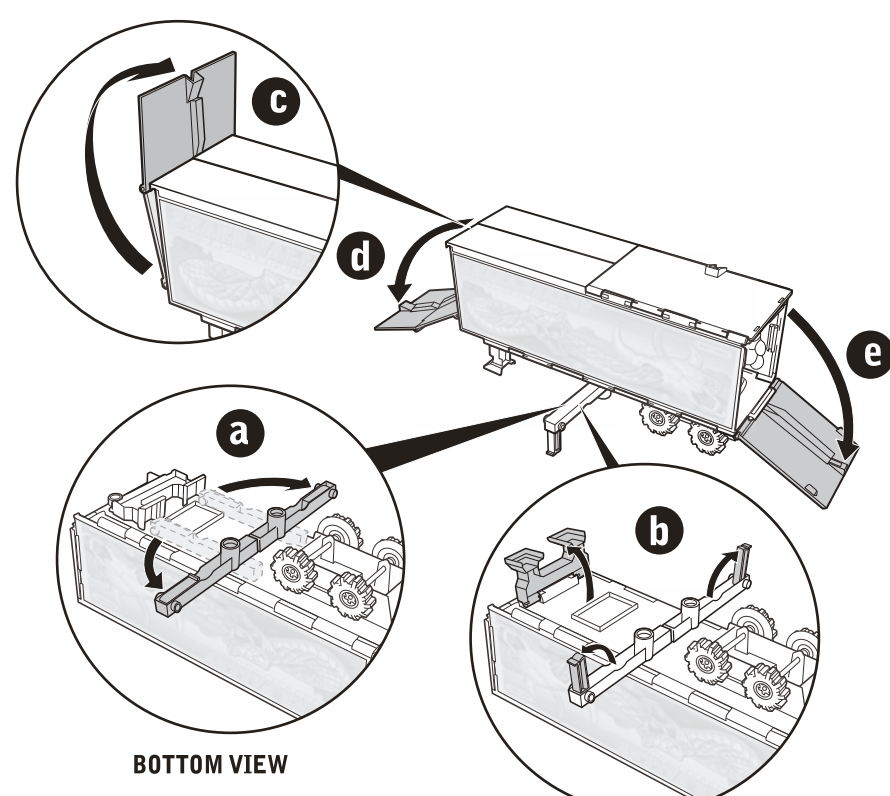
MATCHBOX.COM™

N5566-0920

© 2008 Mattel, Inc. All Rights Reserved. Mattel, Inc., 333 Continental Blvd., El Segundo, CA 90245 U.S.A. Consumer Relations 1 (800) 524-8697 service.mattel.com • Mattel Canada Inc., Mississauga, Ontario L5R 3W2. You may call us free at 1-800-524-8697. • Mattel U.K. Ltd., Vanwall Business Park, Maidenhead SL6 4UB, Helpline 01628500303 • Mattel Australia Pty Ltd., Richmond, Victoria, 3121. Consumer Advisory Service - 1300 135 312. • Mattel East Asia Ltd., Room 1106, South Tower, World Finance Centre, Harbour City, Tsimshatsui, HK, China. • Diimport & Diedarkan Oleh: Mattel SEA Ptd Ltd.(993532-P) Lot 13.5, Menara Lien Hoe, Persiaran Tropicana Golf Country Resort, 47410 PJ, Tel:03-78803817, Fax:03-78803867.

SET-UP

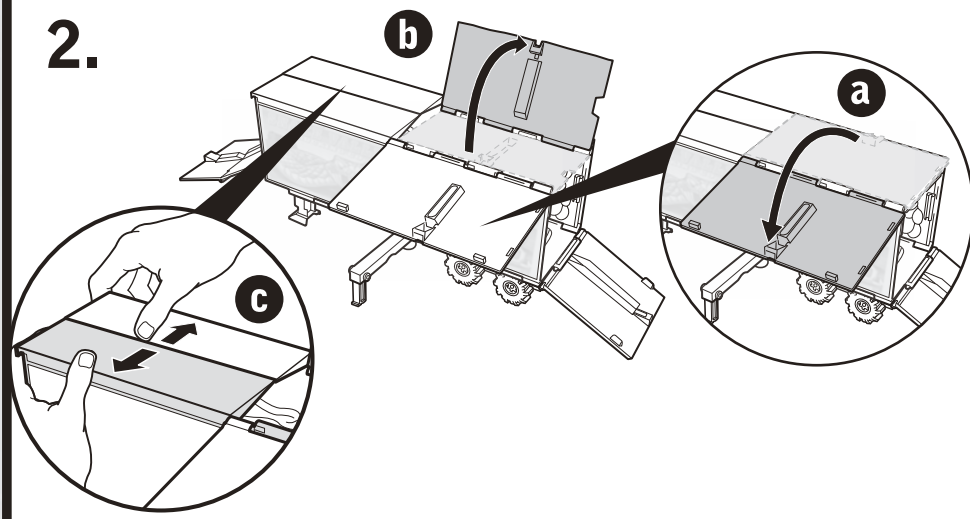
1.



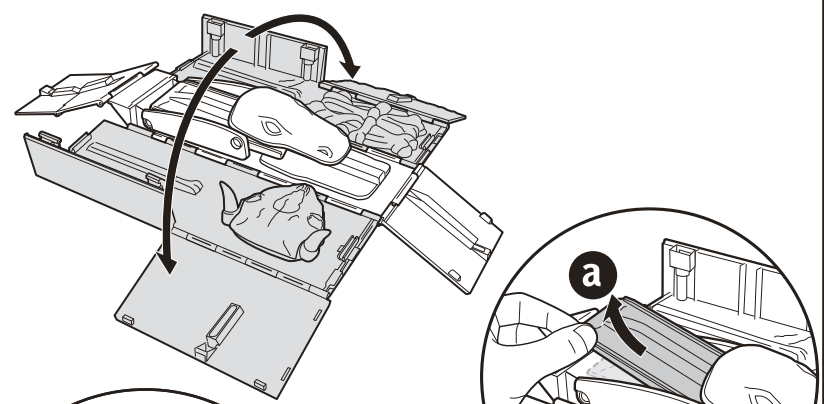
BOTTOM VIEW

BOTTOM VIEW

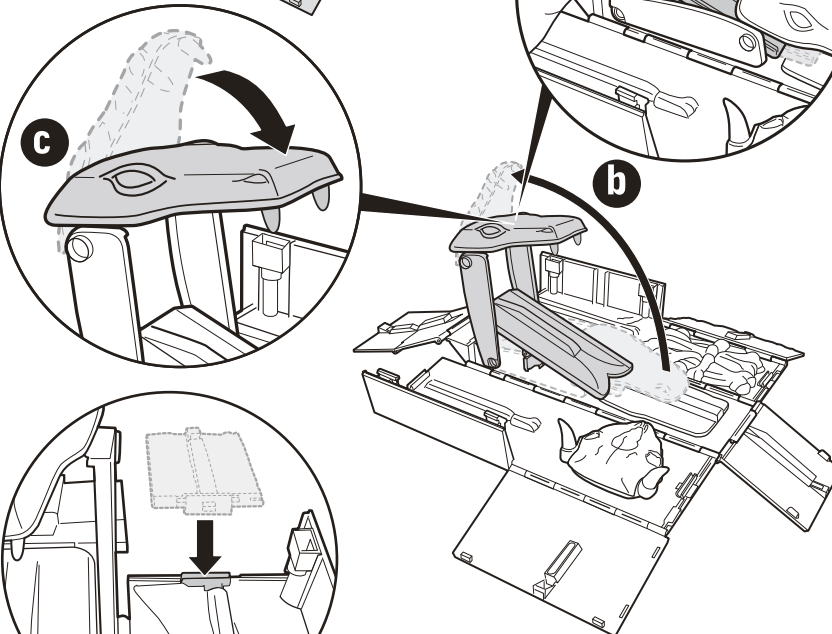
2.



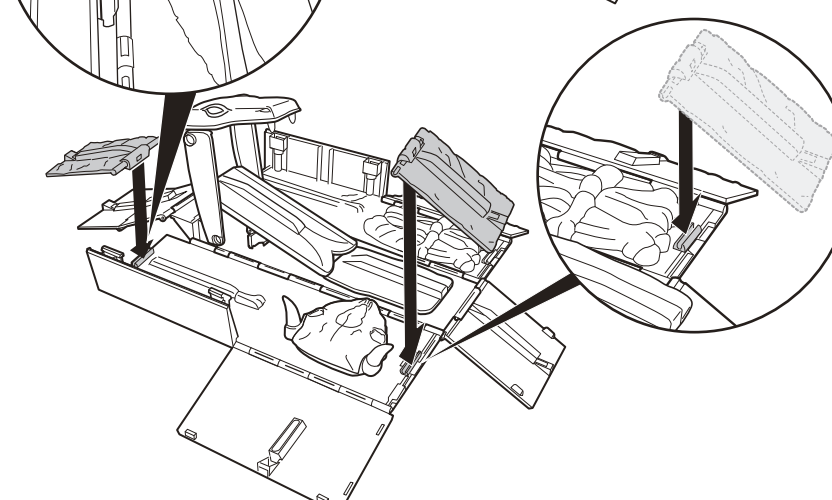
3.



4.



5.



PLAY

1.

